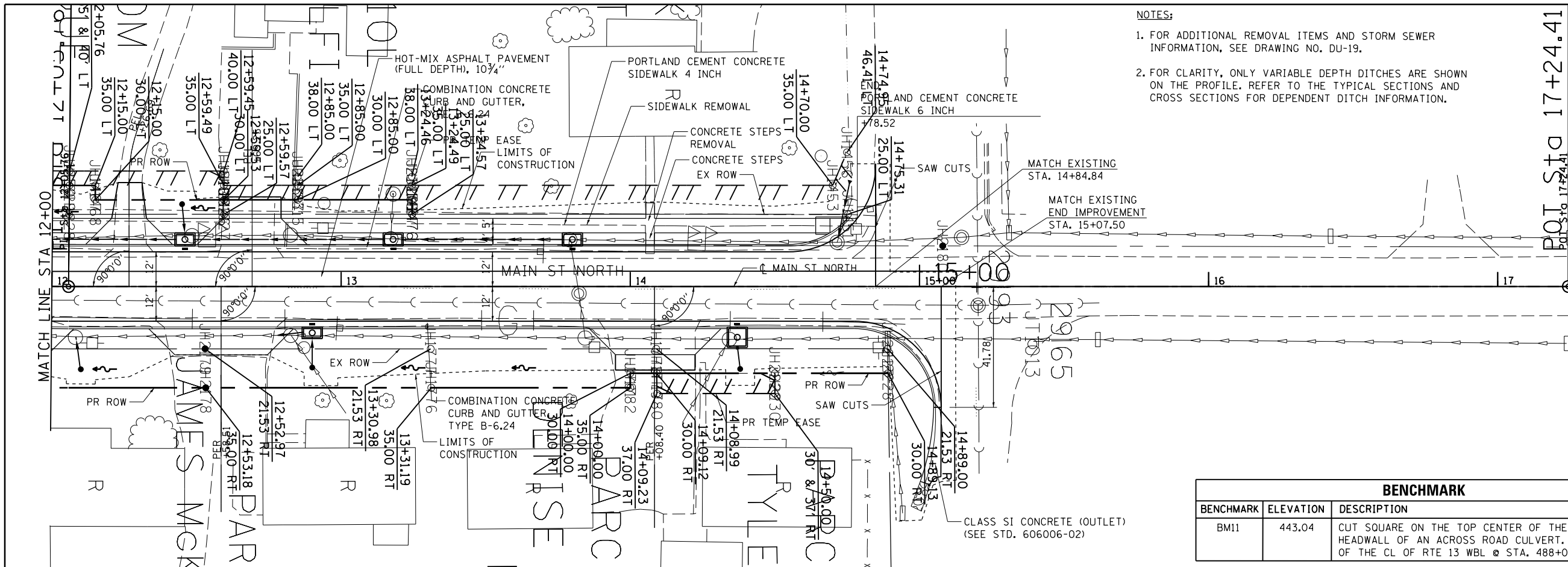


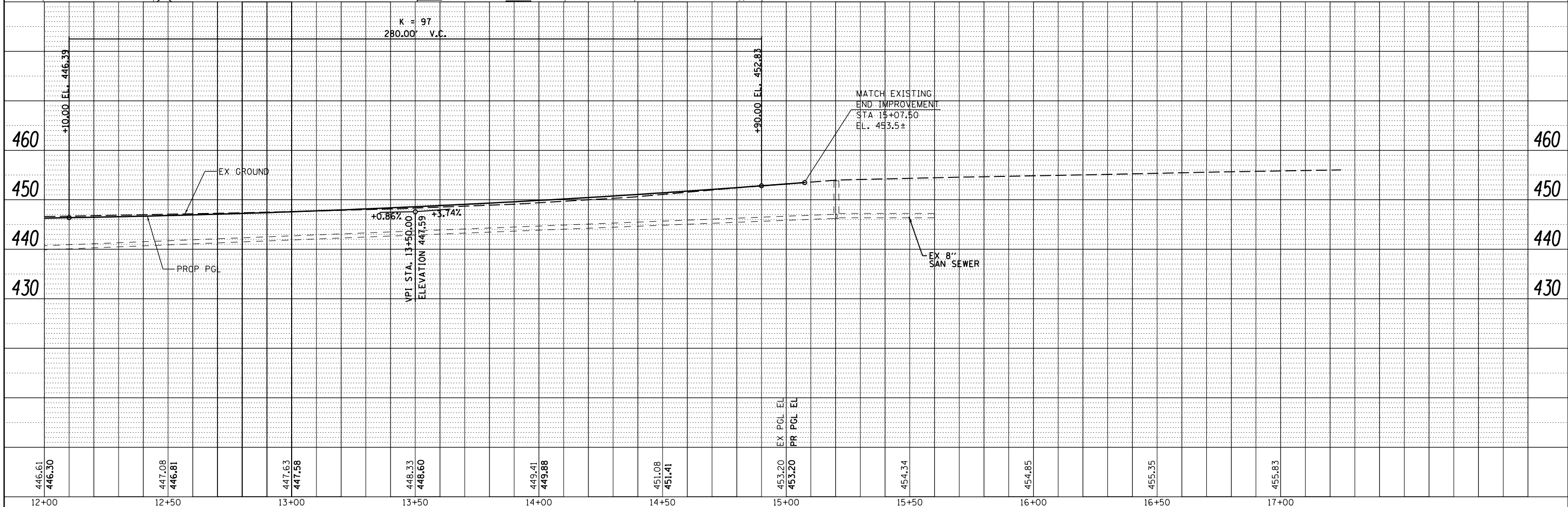
DATE	
BY	
SURVEYED	
PLOTTED	
ALIGNED	
CHECKED	
DESIGNED	
FILE NAME	
PLAN	
NOTE BOOK	
NO.	

DATE	
BY	
SURVEYED	
PLOTTED	
GRADES CHECKED	
STRUCTURE	
NOTATIONS CHECKED	
PROFILE	
NOTE BOOK	
NO.	



- NOTES:
- FOR ADDITIONAL REMOVAL ITEMS AND STORM SEWER INFORMATION, SEE DRAWING NO. DU-19.
  - FOR CLARITY, ONLY VARIABLE DEPTH DITCHES ARE SHOWN ON THE PROFILE. REFER TO THE TYPICAL SECTIONS AND CROSS SECTIONS FOR DEPENDENT DITCH INFORMATION.

BENCHMARK		
BENCHMARK	ELEVATION	DESCRIPTION
BM11	443.04	CUT SQUARE ON THE TOP CENTER OF THE NORTH HEADWALL OF AN ACROSS ROAD CULVERT, 57.05' LEFT OF THE CL OF RTE 13 WBL @ STA. 488+08.33



FILE NAME =	USER NAME = \$USER\$	DESIGNED - KN	REVISED -	<p align="center"><b>STATE OF ILLINOIS</b> <b>DEPARTMENT OF TRANSPORTATION</b></p> <p align="center"><b>ROADWAY, DRAINAGE AND UTILITY PLANS</b> <b>MAIN STREET NORTH</b></p>	F.A.P. RTE.	SECTION	COUNTY	TOTAL SHEETS	SHEET NO.
c:\pwork\pwork\lavenderba\d8363618\0978221-sht-plnprf-63.dgn		DRAWN - AS	REVISED -		331	(1-3)R-2, N-4, T5-4, HBK-1	WILLIAMSON	733	187
PLOT SCALE = 48.0000' / in.		CHECKED -	REVISED -		DRAWING NO. <b>PL-63</b>		CONTRACT NO. 78221		
PLOT DATE = 1/31/2014		DATE -	REVISED -		SCALE:		SHEET NO. 63 OF 69 SHEETS		STA. 12+00.00 TO STA. 15+07.50

POT. STA. 17+24.41