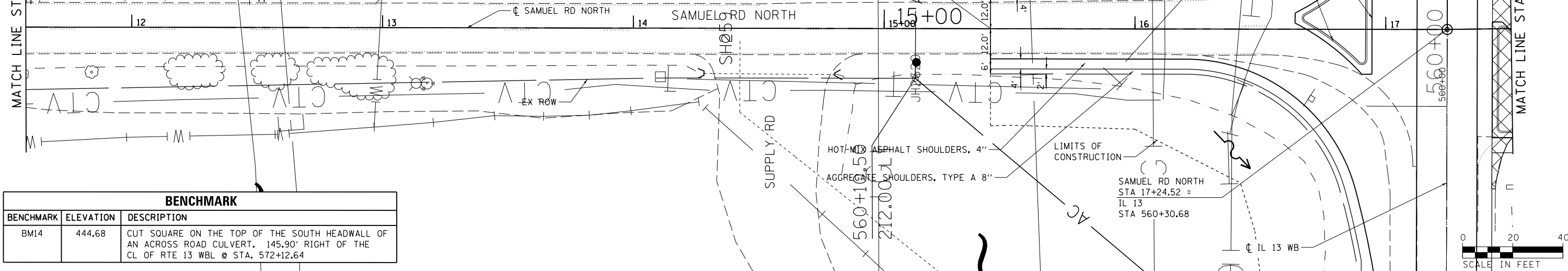


NOTES:

- FOR ADDITIONAL INFORMATION FOR RAISED CURB MEDIAN AND ISLAND, SEE INTERSECTION DETAILS ISLAND, MEDIAN AND NOSE GEOMETRICS.
- FOR CLARITY, ONLY VARIABLE DEPTH DITCHES ARE SHOWN ON THE PROFILE. REFER TO THE TYPICAL SECTIONS AND CROSS SECTIONS FOR DEPENDENT DITCH INFORMATION.

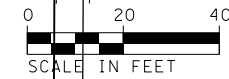
PLAN	SURVEYED	DATE
	PLOTTED	
	ALIGNED	
	CHECKED	
	DESIGNED	
	BY	
	NO.	

MATCH LINE STA 11+50



BENCHMARK

BENCHMARK	ELEVATION	DESCRIPTION
BM14	444.68	CUT SQUARE ON THE TOP OF THE SOUTH HEADWALL OF AN ACROSS ROAD CULVERT. 145.90' RIGHT OF THE CL OF RTE 13 WBL @ STA. 572+12.64



PROFILE	SURVEYED	DATE
	PLOTTED	
	GRADES CHECKED	
	STRUCTURE NOTATIONS OK'D	
	BY	
	NO.	

480

470

460

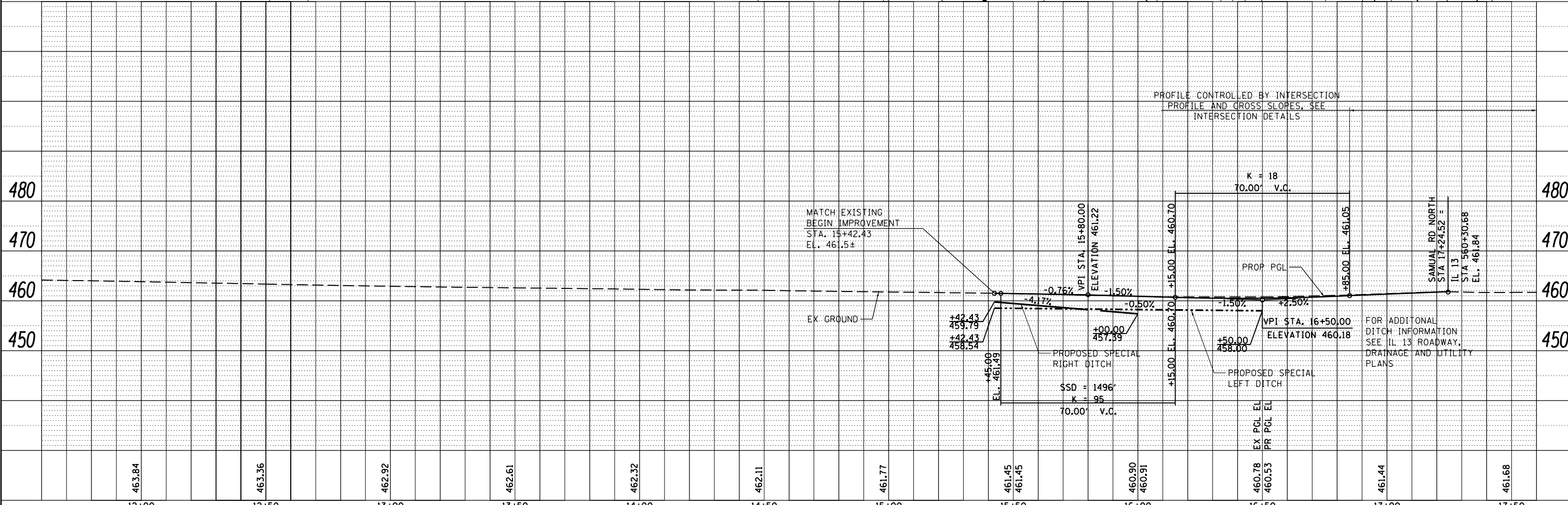
450

480

470

460

450



463.84

463.36

462.92

462.61

462.32

462.11

461.77

461.45

460.90

460.53

461.44

461.68

FILE NAME =	USER NAME = \$USER\$	DESIGNED - KN	REVISED -	<p align="center">STATE OF ILLINOIS DEPARTMENT OF TRANSPORTATION</p>	<p align="center">ROADWAY, DRAINAGE AND UTILITY PLANS SAMUEL ROAD NORTH</p>		F.A.P. RTE.	SECTION	COUNTY	TOTAL SHEETS	SHEET NO.
c:\pwork\pwork\lavenderba\d0363618\0978221-sht-plnprf-66.dgn		DRAWN - AS	REVISED -		331	(1-3)R-2, N-4, TS-4, HBK-1	WILLIAMSON	733	190		
PLOT SCALE = 40.0000' / in.		CHECKED -	REVISED -		DRAWING NO.	PL-66	CONTRACT NO.	78221			
PLOT DATE = 1/31/2014		DATE -	REVISED -		SCALE:	SHEET NO. 66 OF 69 SHEETS	STA. 15+42.43 TO STA. 17+50.00	ILLINOIS FED. AID PROJECT			