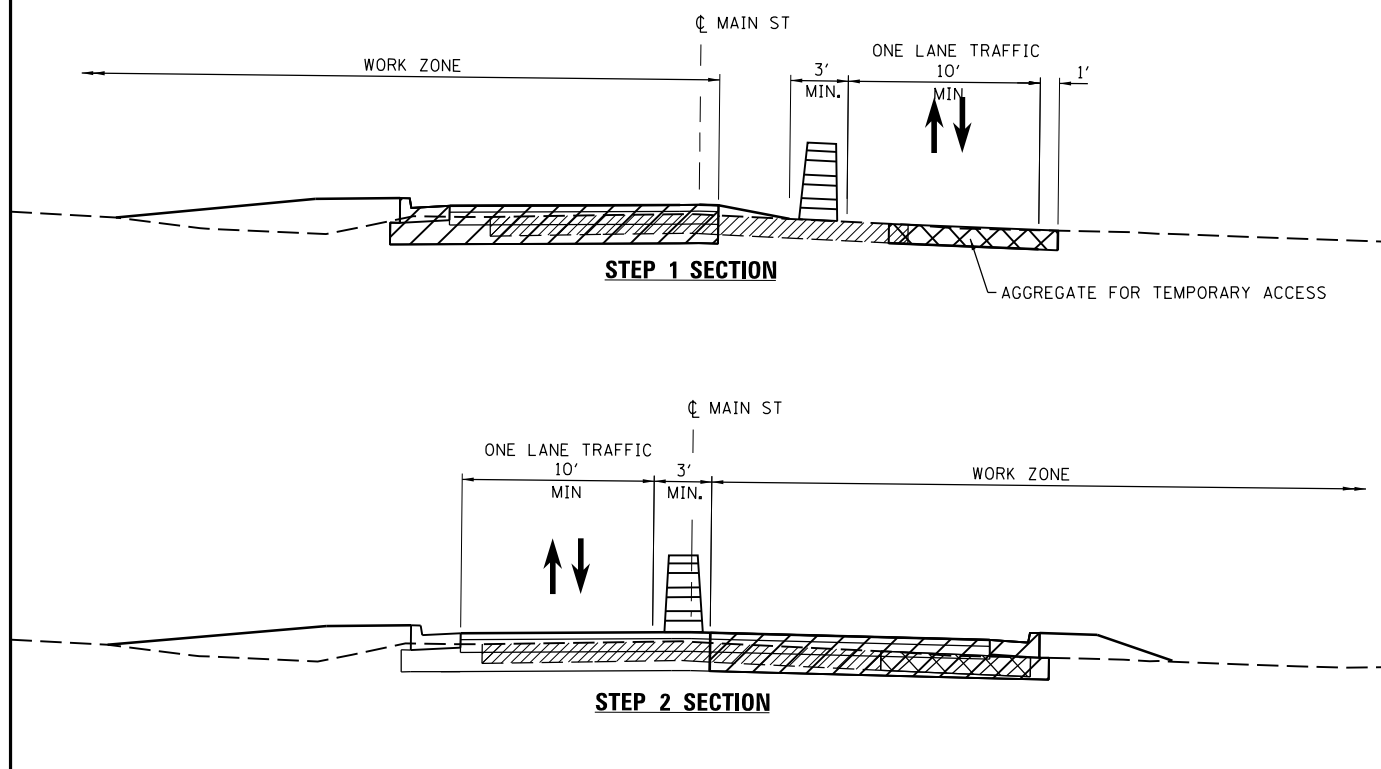
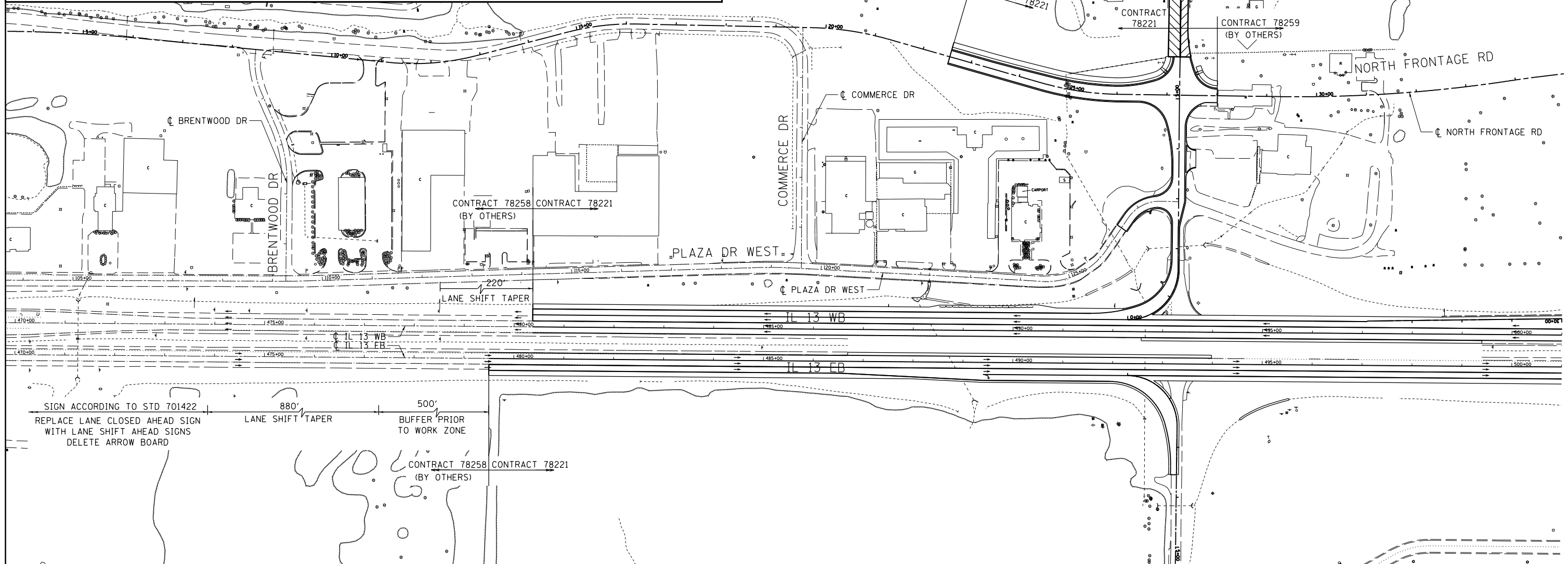
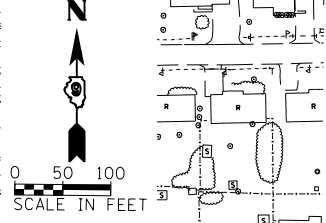


**STAGED CONSTRUCTION FOR MAIN ST**



**LEGEND**

- CONSTRUCTION THIS STAGE
- TEMPORARY PAVEMENT
- ROAD CLOSED
- DIRECTION OF TRAVEL/LANE MAINTAINED
- DRUMS, CONES, OR BARRICADE



SIGN ACCORDING TO STD 701422  
 REPLACE LANE CLOSED AHEAD SIGN  
 WITH LANE SHIFT AHEAD SIGN  
 DELETE ARROW BOARD

FILE NAME =	USER NAME = \$USER\$	DESIGNED - KN	REVISED -
et:\pw\work\p\midot\lavenderba\d0363618\078221-sht-staging-17.dgn		DRAWN - AS	REVISED -
	PLOT SCALE = 200.0000' / in.	CHECKED -	REVISED -
	PLOT DATE = 1/31/2014	DATE -	REVISED -

**STATE OF ILLINOIS  
 DEPARTMENT OF TRANSPORTATION**

**SUGGESTED STAGES OF CONSTRUCTION AND TRAFFIC CONTROL**  
**IL 13 - STAGE 4**  
 SCALE: SHEET NO. 17 OF 17 SHEETS STA. TO STA.

F.A.P. RTE.	SECTION	COUNTY	TOTAL SHEETS	SHEET NO.
331	(1-3)R-2, N-4, TS-4, HBK-1	WILLIAMSON	733	210
DRAWING NO. TC-17		CONTRACT NO. 78221		
ILLINOIS FED. AID PROJECT				