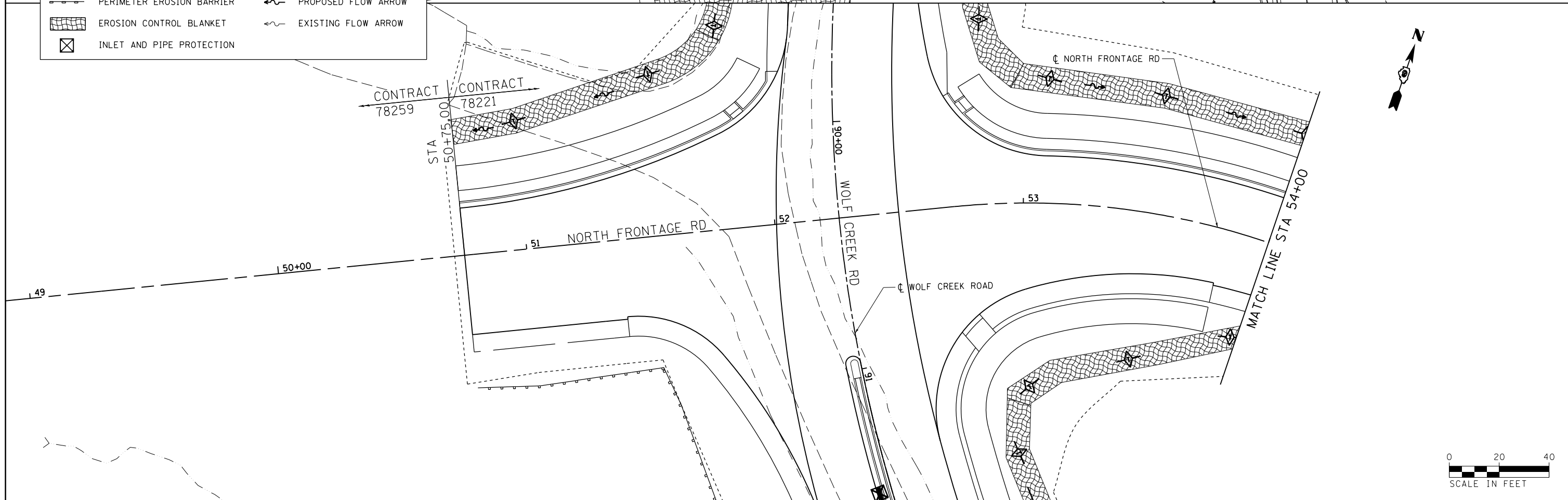


NOTES:
 1. IN LOCATIONS OF PROPOSED DITCHES, ENTIRE WIDTH OF DITCH BOTTOM PLUS 1' MINIMUM OF DITCH FORESLOPE AND BACKSLOPE SHALL BE COVERED WITH EROSION CONTROL BLANKET. FOR STATION RANGES AND LOCATIONS, SEE EROSION CONTROL SCHEDULES.

LEGEND	
	RIPRAP
	PERIMETER EROSION BARRIER
	EROSION CONTROL BLANKET
	INLET AND PIPE PROTECTION
	TEMPORARY DITCH CHECK
	PROPOSED FLOW ARROW
	EXISTING FLOW ARROW



FILE NAME =	USER NAME = \$USER\$	DESIGNED - KN	REVISED -	STATE OF ILLINOIS DEPARTMENT OF TRANSPORTATION	EROSION AND SEDIMENT CONTROL PLAN NORTH FRONTAGE ROAD	F.A.P. RTE.	SECTION	COUNTY	TOTAL SHEETS	SHEET NO.	
c:\pwwork\pwwork\lavenderba\d0363618\078221-sht-eros-14.dgn		DRAWN - AS	REVISED -			331	(1-3)R-2, N-4, TS-4, HKB-1	WILLIAMSON	733	224	
	PLOT SCALE = 40.0000' / in.	CHECKED -	REVISED -			DRAWING NO. EC-14	CONTRACT NO. 78221	ILLINOIS FED. AID PROJECT			
	PLOT DATE = 1/31/2014	DATE -	REVISED -			SCALE:	SHEET NO. 14 OF 30 SHEETS	STA. 22+55.43	TO STA. 54+00.00		