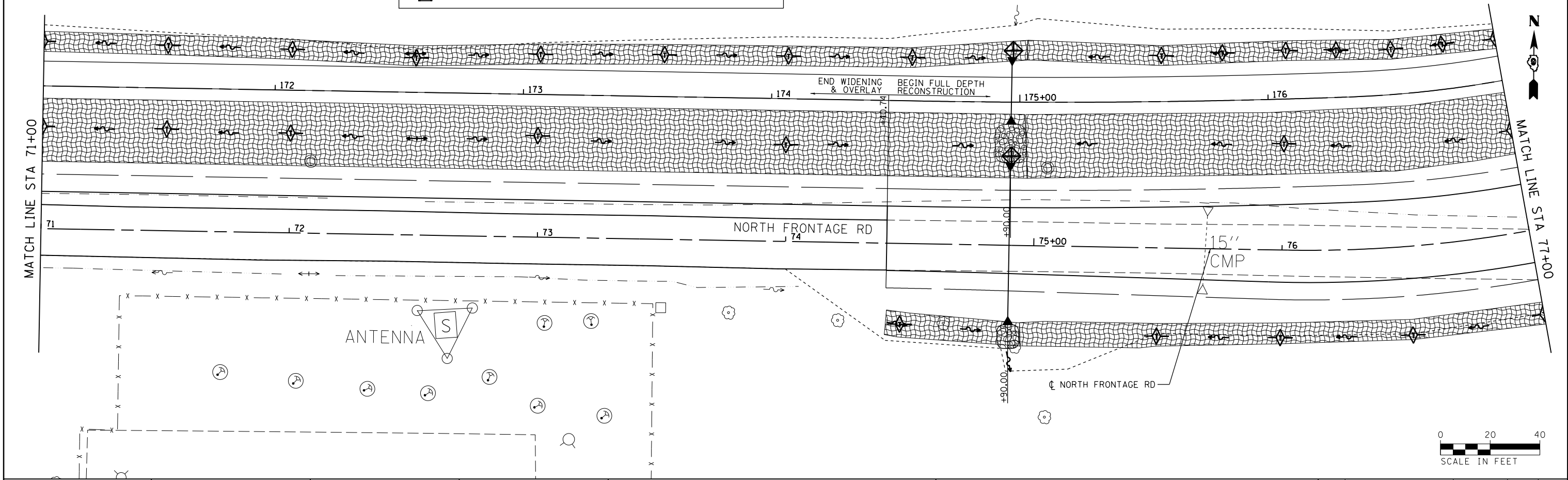


NOTES:
 1. IN LOCATIONS OF PROPOSED DITCHES, ENTIRE WIDTH OF DITCH BOTTOM PLUS 1' MINIMUM OF DITCH FORESLOPE AND BACKSLOPE SHALL BE COVERED WITH EROSION CONTROL BLANKET. FOR STATION RANGES AND LOCATIONS, SEE EROSION CONTROL SCHEDULES.

LEGEND			
	RIPRAP		TEMPORARY DITCH CHECK
	PERIMETER EROSION BARRIER		PROPOSED FLOW ARROW
	EROSION CONTROL BLANKET		EXISTING FLOW ARROW
	INLET AND PIPE PROTECTION		



FILE NAME =
 c:\pw_work\pwwork\lavenderba\d0363618\0978221-shit-eros-16.dgn

USER NAME = #USER#
 78221-shit-eros-16.dgn
 PLOT SCALE = 3/4" = 1'-0"
 PLOT DATE = 1/31/2014

DESIGNED - KN
 DRAWN - AS
 CHECKED -
 DATE -

REVISED -
 REVISED -
 REVISED -
 REVISED -

**STATE OF ILLINOIS
 DEPARTMENT OF TRANSPORTATION**

**EROSION AND SEDIMENT CONTROL PLAN
 NORTH FRONTAGE ROAD**

SCALE: SHEET NO. 16 OF 30 SHEETS STA. 65+00.00 TO STA. 77+00.00

F.A.P. RTE.	SECTION	COUNTY	TOTAL SHEETS	SHEET NO.
331	(1-3)R-2, N-4, TS-4, HBK-1	WILLIAMSON	733	226
DRAWING NO. EC-16		CONTRACT NO. 78221		ILLINOIS FED. AID PROJECT