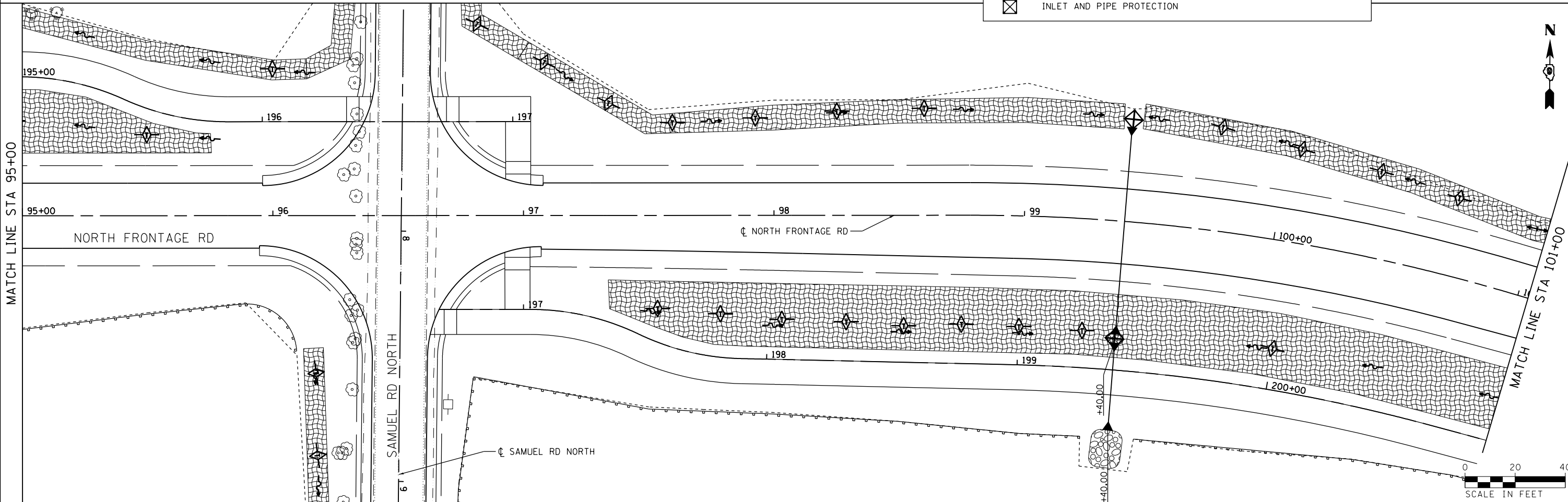


NOTES:
 1. IN LOCATIONS OF PROPOSED DITCHES, ENTIRE WIDTH OF DITCH BOTTOM PLUS 1' MINIMUM OF DITCH FORESLOPE AND BACKSLOPE SHALL BE COVERED WITH EROSION CONTROL BLANKET. FOR STATION RANGES AND LOCATIONS, SEE EROSION CONTROL SCHEDULES.

LEGEND

	RIPRAP		TEMPORARY DITCH CHECK
	PERIMETER EROSION BARRIER		PROPOSED FLOW ARROW
	EROSION CONTROL BLANKET		EXISTING FLOW ARROW
	INLET AND PIPE PROTECTION		



FILE NAME =	USER NAME = \$USER\$	DESIGNED - KN	REVISED -	STATE OF ILLINOIS DEPARTMENT OF TRANSPORTATION	EROSION AND SEDIMENT CONTROL PLAN NORTH FRONTAGE ROAD	F.A.P. RTE.	SECTION	COUNTY	TOTAL SHEETS	SHEET NO.
cs:\pw\work\pwidot\lavenderba\d0363618\0978221-shr-eros-18.dgn	DRAWN - AS	REVISED -	331			(1-3)R-2, N-4, TS-4, HBK-1	WILLIAMSON	733	228	
PLOT SCALE = 40.0000' / in.	CHECKED -	REVISED -	DRAWING NO. EC-18			CONTRACT NO. 78221		ILLINOIS FED. AID PROJECT		
PLOT DATE = 1/31/2014	DATE -	REVISED -	SCALE:			SHEET NO. 18 OF 30 SHEETS	STA. 89+00.00 TO STA. 101+00.00			