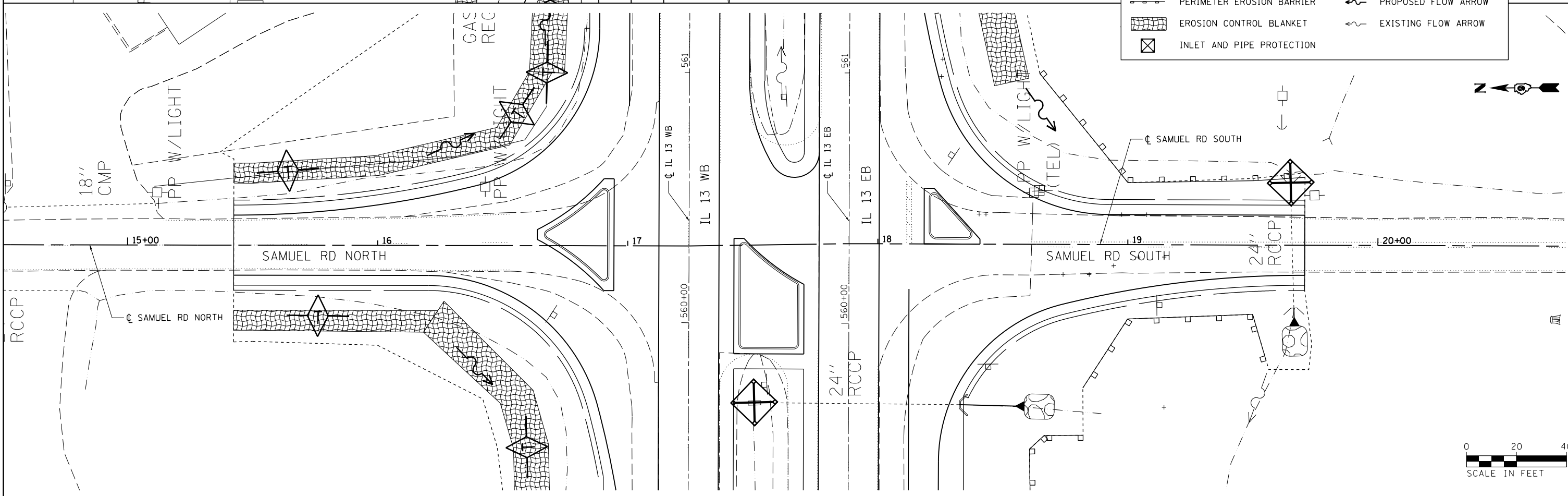


NOTES:
 1. IN LOCATIONS OF PROPOSED DITCHES, ENTIRE WIDTH OF DITCH BOTTOM PLUS 1' MINIMUM OF DITCH FORESLOPE AND BACKSLOPE SHALL BE COVERED WITH EROSION CONTROL BLANKET. FOR STATION RANGES AND LOCATIONS, SEE EROSION CONTROL SCHEDULES.

LEGEND	
	RIPRAP
	PERIMETER EROSION BARRIER
	EROSION CONTROL BLANKET
	INLET AND PIPE PROTECTION
	TEMPORARY DITCH CHECK
	PROPOSED FLOW ARROW
	EXISTING FLOW ARROW



FILE NAME =	USER NAME = \$USER\$	DESIGNED - KN	REVISED -
c:\pwork\pwork\lavenderba\0363618\0378221-sht-eros-28.dgn		DRAWN - AS	REVISED -
PLOT SCALE = 48.0000' / 1" =		CHECKED -	REVISED -
PLOT DATE = 1/31/2014		DATE -	REVISED -

**STATE OF ILLINOIS
 DEPARTMENT OF TRANSPORTATION**

**EROSION AND SEDIMENT CONTROL PLAN
 SAMUEL ROAD NORTH /SAMUEL ROAD SOUTH**
 SCALE: SHEET NO. 28 OF 30 SHEETS STA. 6+00.00 TO STA. 10+90.00

F.A.P. RTE.	SECTION	COUNTY	TOTAL SHEETS	SHEET NO.
331	(1-3)R-2, N-4, TS-4, HBK-1	WILLIAMSON	733	238
DRAWING NO. EC-28		CONTRACT NO. 78221		
ILLINOIS FED. AID PROJECT				