

NOTES:

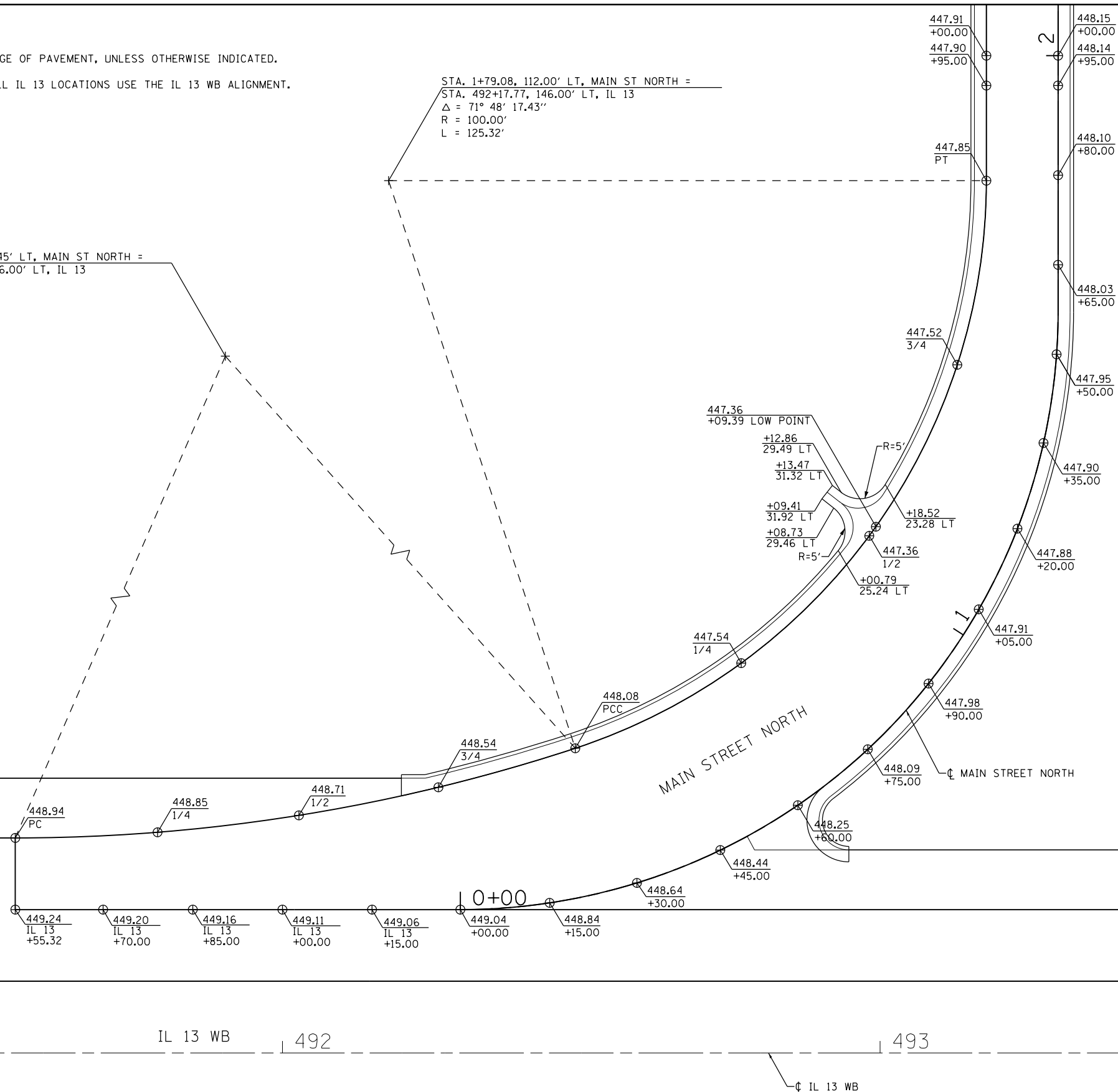
- ELEVATIONS GIVEN ARE AT THE EDGE OF PAVEMENT, UNLESS OTHERWISE INDICATED.
- STATION OFFSET CALLOUTS FOR ALL IL 13 LOCATIONS USE THE IL 13 WB ALIGNMENT.

LEGEND

⊕ SPOT ELEVATION LOCATION

STA. 3+69.08, 174.45' LT, MAIN ST NORTH =
 STA. 491+55.32, 336.00' LT, IL 13
 $\Delta = 18^\circ 11' 41.54''$
 $R = 300.00'$
 $L = 95.27'$

STA. 1+79.08, 112.00' LT, MAIN ST NORTH =
 STA. 492+17.77, 146.00' LT, IL 13
 $\Delta = 71^\circ 48' 17.43''$
 $R = 100.00'$
 $L = 125.32'$



IL 13 WB | 492 | 493 | 494

IL 13 WB



FILE NAME =	USER NAME = \$USER\$	DESIGNED - KN	REVISED -	STATE OF ILLINOIS DEPARTMENT OF TRANSPORTATION	INTERSECTION DETAILS IL 13 AND MAIN STREET NORTH	F.A.P. RTE. =	SECTION	COUNTY	TOTAL SHEETS	SHEET NO.
ct:\pw_work\p\pidot\lavenderba\d0363618\078221-sht-intersec-01.dgn	DRAWN - AS	REVISED -	331			(1-3)R-2, N-4, TS-4, HBK-1	WILLIAMSON	733	277	
PLOT SCALE = 20.0000' / in.	CHECKED -	REVISED -	DRAWING NO. ID-01			CONTRACT NO. 78221		ILLINOIS FED. AID PROJECT		
PLOT DATE = 1/31/2014	DATE -	REVISED -	SCALE:			SHEET NO. 1 OF 30 SHEETS	STA.	TO STA.		