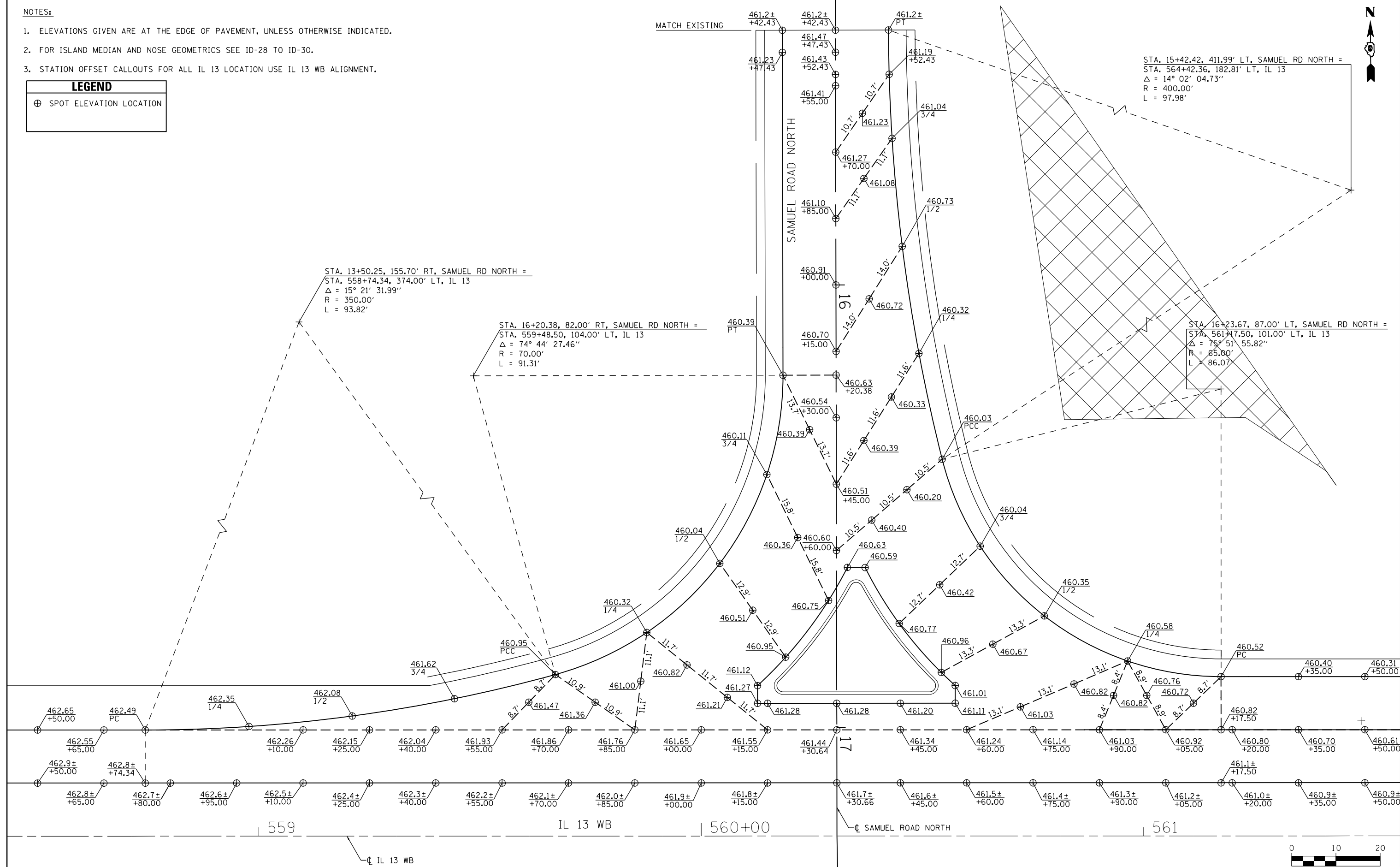


**NOTES:**

- ELEVATIONS GIVEN ARE AT THE EDGE OF PAVEMENT, UNLESS OTHERWISE INDICATED.
- FOR ISLAND MEDIAN AND NOSE GEOMETRICS SEE ID-28 TO ID-30.
- STATION OFFSET CALLOUTS FOR ALL IL 13 LOCATION USE IL 13 WB ALIGNMENT.

**LEGEND**

⊕ SPOT ELEVATION LOCATION



STA. 15+42.42, 411.99' LT, SAMUEL RD NORTH =  
 STA. 564+42.36, 182.81' LT, IL 13  
 Δ = 14° 02' 04.73"  
 R = 400.00'  
 L = 97.98'

STA. 16+23.67, 87.00' LT, SAMUEL RD NORTH =  
 STA. 561+17.50, 101.00' LT, IL 13  
 Δ = 75° 51' 55.82"  
 R = 65.00'  
 L = 86.07'

STA. 13+50.25, 155.70' RT, SAMUEL RD NORTH =  
 STA. 558+74.34, 374.00' LT, IL 13  
 Δ = 15° 21' 31.99"  
 R = 350.00'  
 L = 93.82'

STA. 16+20.38, 82.00' RT, SAMUEL RD NORTH =  
 STA. 559+48.50, 104.00' LT, IL 13  
 Δ = 74° 44' 27.46"  
 R = 70.00'  
 L = 91.31'



FILE NAME =	USER NAME = \$USER\$	DESIGNED - KN	REVISED -	<b>STATE OF ILLINOIS DEPARTMENT OF TRANSPORTATION</b>	<b>INTERSECTION DETAILS IL 13 AND SAMUEL ROAD NORTH</b>			F.A.P. RTE.	SECTION	COUNTY	TOTAL SHEETS	SHEET NO.
ci:\p\work\p\dot\lavenderba\d0363618\0978221-sht-intersec-03.dgn		DRAWN - AS	REVISED -		SCALE:	SHEET NO. 3 OF 30 SHEETS	STA.	TO STA.	331 (1-3)R-2, N-4, TS-4, HBK-1	WILLIAMSON	733	279
		CHECKED -	REVISED -						DRAWING NO. <b>ID-03</b>	CONTRACT NO. 78221		
		DATE -	REVISED -						ILLINOIS FED. AID PROJECT			