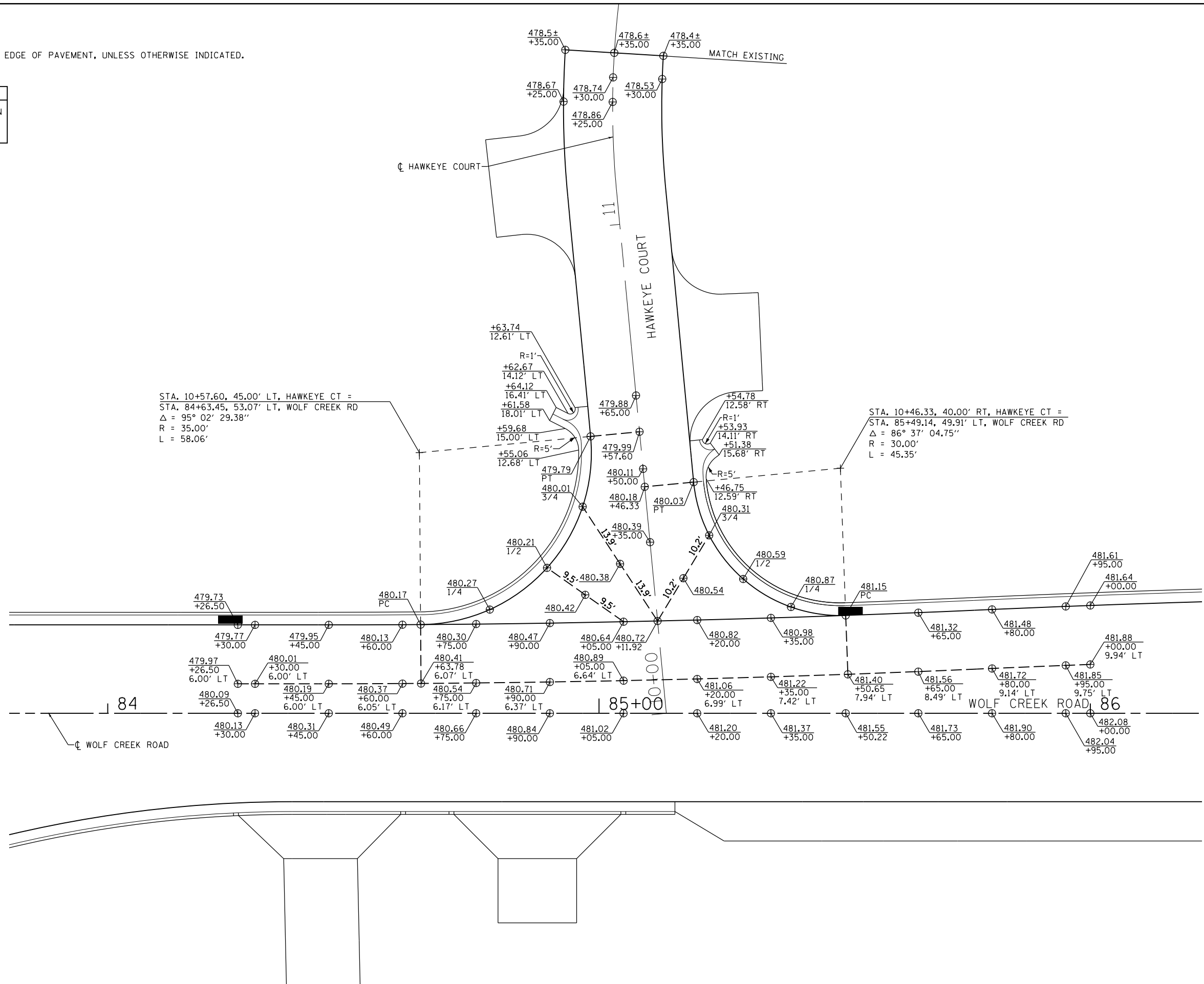


NOTES:

1. ELEVATIONS GIVEN ARE AT THE EDGE OF PAVEMENT, UNLESS OTHERWISE INDICATED.



LEGEND	
⊕	SPOT ELEVATION LOCATION



STA. 10+57.60, 45.00' LT, HAWKEYE CT =
 STA. 84+63.45, 53.07' LT, WOLF CREEK RD
 $\Delta = 95^\circ 02' 29.38''$
 R = 35.00'
 L = 58.06'

STA. 10+46.33, 40.00' RT, HAWKEYE CT =
 STA. 85+49.14, 49.91' LT, WOLF CREEK RD
 $\Delta = 86^\circ 37' 04.75''$
 R = 30.00'
 L = 45.35'



FILE NAME =	USER NAME = \$USER\$	DESIGNED - KN	REVISED -	STATE OF ILLINOIS DEPARTMENT OF TRANSPORTATION	INTERSECTION DETAILS WOLF CREEK ROAD AND HAWKEYE COURT		F.A.P. RTE.	SECTION	COUNTY	TOTAL SHEETS	SHEET NO.		
ct:\pw\work\p\idot\lavenderba\d0363618\0978221-sht-intersec-14.dgn		DRAWN - AS	REVISED -		SCALE:	SHEET NO. 14 OF 30 SHEETS	STA.	TO STA.	331	(1-3)R-2, N-4, TS-4, HBK-1	WILLIAMSON	733	290
		CHECKED -	REVISED -						DRAWING NO.	ID-14	CONTRACT NO.	78221	
		DATE -	REVISED -						ILLINOIS FED. AID PROJECT				