

NOTES:

- ELEVATIONS GIVEN ARE AT THE EDGE OF PAVEMENT, UNLESS OTHERWISE INDICATED.
- FOR ISLAND MEDIAN AND NOSE GEOMETRICS SEE ID-28 TO ID-30.

LEGEND

⊕ SPOT ELEVATION LOCATION

STA. 95+23.23, 99.02' RT, WOLF CREEK RD =
 STA. 10+90.62, 66.94' RT, RAMP A
 $\Delta = 64^\circ 44' 46.75''$
 R = 60.00'
 L = 67.80'

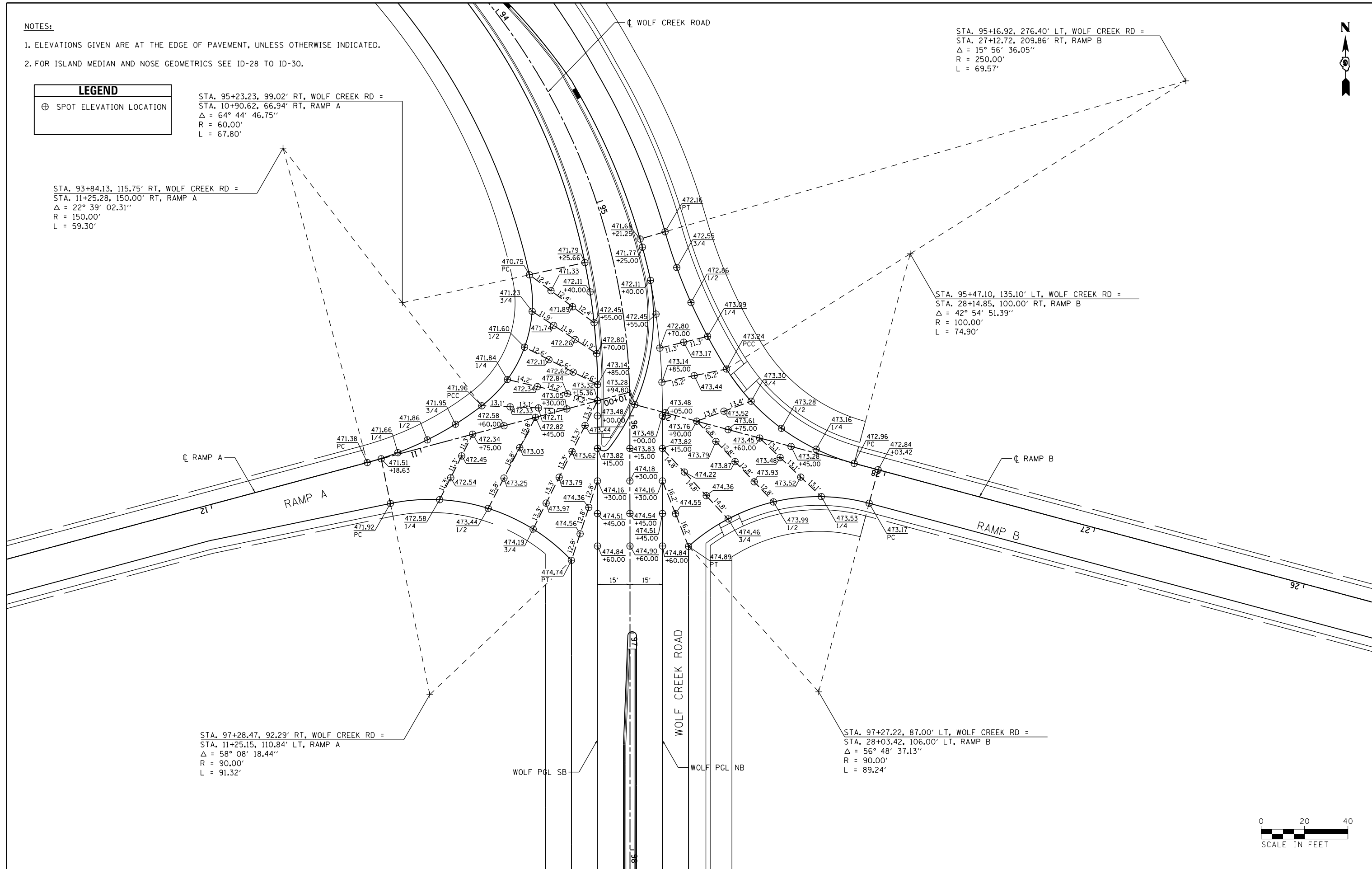
STA. 93+84.13, 115.75' RT, WOLF CREEK RD =
 STA. 11+25.28, 150.00' RT, RAMP A
 $\Delta = 22^\circ 39' 02.31''$
 R = 150.00'
 L = 59.30'

STA. 95+16.92, 276.40' LT, WOLF CREEK RD =
 STA. 27+12.72, 209.86' RT, RAMP B
 $\Delta = 15^\circ 56' 36.05''$
 R = 250.00'
 L = 69.57'

STA. 95+47.10, 135.10' LT, WOLF CREEK RD =
 STA. 28+14.85, 100.00' RT, RAMP B
 $\Delta = 42^\circ 54' 51.39''$
 R = 100.00'
 L = 74.90'

STA. 97+28.47, 92.29' RT, WOLF CREEK RD =
 STA. 11+25.15, 110.84' LT, RAMP A
 $\Delta = 58^\circ 08' 18.44''$
 R = 90.00'
 L = 91.32'

STA. 97+27.22, 87.00' LT, WOLF CREEK RD =
 STA. 28+03.42, 106.00' LT, RAMP B
 $\Delta = 56^\circ 48' 37.13''$
 R = 90.00'
 L = 89.24'



FILE NAME = c:\pwwork\pwwid\l\avenderba\d0363618\0978221-sht-intersec-16.dgn	USER NAME = \$USER\$	DESIGNED - KN	REVISED -	STATE OF ILLINOIS DEPARTMENT OF TRANSPORTATION	INTERSECTION DETAILS WOLF CREEK ROAD AND RAMP A AND RAMP B	F.A.P. RTE.	SECTION	COUNTY	TOTAL SHEETS	SHEET NO.	
PLOT SCALE = 39.9795' / in.	DRAWN - AS	CHECKED -	REVISED -			331	(1-3)R-2, N-4, TS-4, HBK-1	WILLIAMSON	733	292	
PLOT DATE = 1/31/2014	DATE -	REVISI	REVISI			DRAWING NO. ID-16	CONTRACT NO. 78221	ILLINOIS FED. AID PROJECT			
		SCALE:	SHEET NO. 16 OF 30 SHEETS			STA.	TO STA.				