

NOTES:

- ELEVATIONS GIVEN ARE AT THE EDGE OF PAVEMENT, UNLESS OTHERWISE INDICATED.
- FOR ISLAND MEDIAN AND NOSE GEOMETRICS SEE ID-28 TO ID-30.

LEGEND	
⊕	SPOT ELEVATION LOCATION



STA. 108+24.99, 230.00' LT, WOLF CREEK RD =
 STA. 102+90.21, 122.94' LT, DONNA DR
 $\Delta = 29^\circ 14' 51.85''$
 $R = 200.00'$
 $L = 102.09'$

STA. 108+84.03, 74.00' RT, WOLF CREEK RD =
 STA. 99+26.00, 83.25' LT, DONNA DR
 $\Delta = 70^\circ 33' 49.84''$
 $R = 50.00'$
 $L = 61.58'$

STA. 106+48.28, 157.19' RT, WOLF CREEK RD =
 STA. 98+42.81, 319.00' LT, DONNA DR
 $\Delta = 19^\circ 26' 10.16''$
 $R = 300.00'$
 $L = 101.77'$

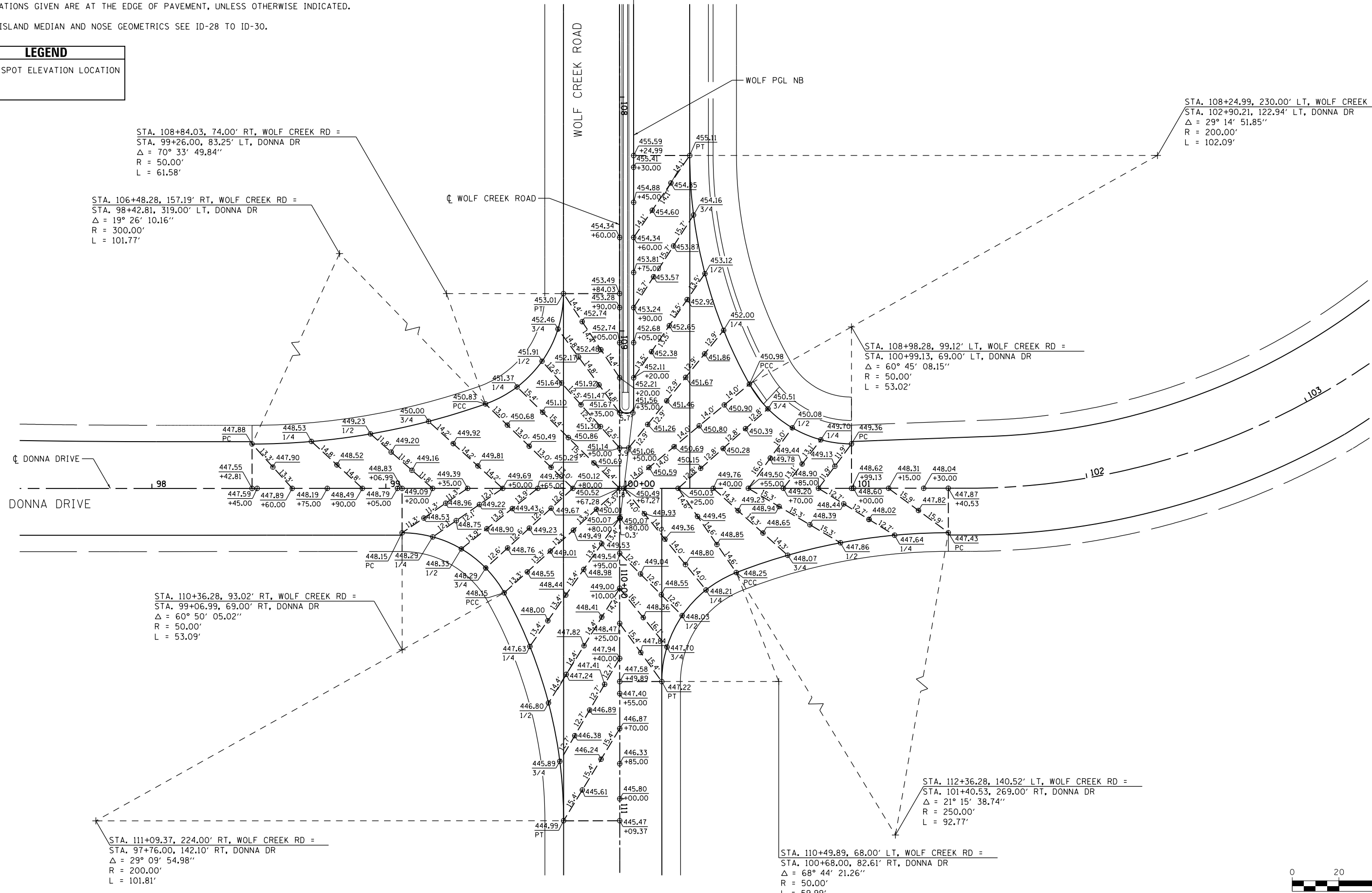
STA. 108+98.28, 99.12' LT, WOLF CREEK RD =
 STA. 100+99.13, 69.00' LT, DONNA DR
 $\Delta = 60^\circ 45' 08.15''$
 $R = 50.00'$
 $L = 53.02'$

STA. 110+36.28, 93.02' RT, WOLF CREEK RD =
 STA. 99+06.99, 69.00' RT, DONNA DR
 $\Delta = 60^\circ 50' 05.02''$
 $R = 50.00'$
 $L = 53.09'$

STA. 111+09.37, 224.00' RT, WOLF CREEK RD =
 STA. 97+76.00, 142.10' RT, DONNA DR
 $\Delta = 29^\circ 09' 54.98''$
 $R = 200.00'$
 $L = 101.81'$

STA. 112+36.28, 140.52' LT, WOLF CREEK RD =
 STA. 101+40.53, 269.00' RT, DONNA DR
 $\Delta = 21^\circ 15' 38.74''$
 $R = 250.00'$
 $L = 92.77'$

STA. 110+49.89, 68.00' LT, WOLF CREEK RD =
 STA. 100+68.00, 82.61' RT, DONNA DR
 $\Delta = 68^\circ 44' 21.26''$
 $R = 50.00'$
 $L = 59.99'$



FILE NAME =	USER NAME = \$USER\$	DESIGNED - KN	REVISED -	STATE OF ILLINOIS DEPARTMENT OF TRANSPORTATION	INTERSECTION DETAILS WOLF CREEK ROAD AND DONNA DRIVE	F.A.P. RTE.	SECTION	COUNTY	TOTAL SHEETS	SHEET NO.
c:\pwwork\pwwork\l\avenderbo\0363618\078221-sht-intersec-18.dgn	DRAWN - AS	REVISED -	331			(1-3)R-2, N-4, TS-4, HBK-1	WILLIAMSON	733	294	
PLOT SCALE = 40.0000' / in.	CHECKED -	REVISED -	DRAWING NO. ID-18			CONTRACT NO. 78221	ILLINOIS FED. AID PROJECT			
PLOT DATE = 1/31/2014	DATE -	REVISED -	SCALE:			SHEET NO. 18 OF 30 SHEETS	STA. TO STA.			