

**NOTES:**

1. ELEVATIONS GIVEN ARE AT THE EDGE OF PAVEMENT, UNLESS OTHERWISE INDICATED.



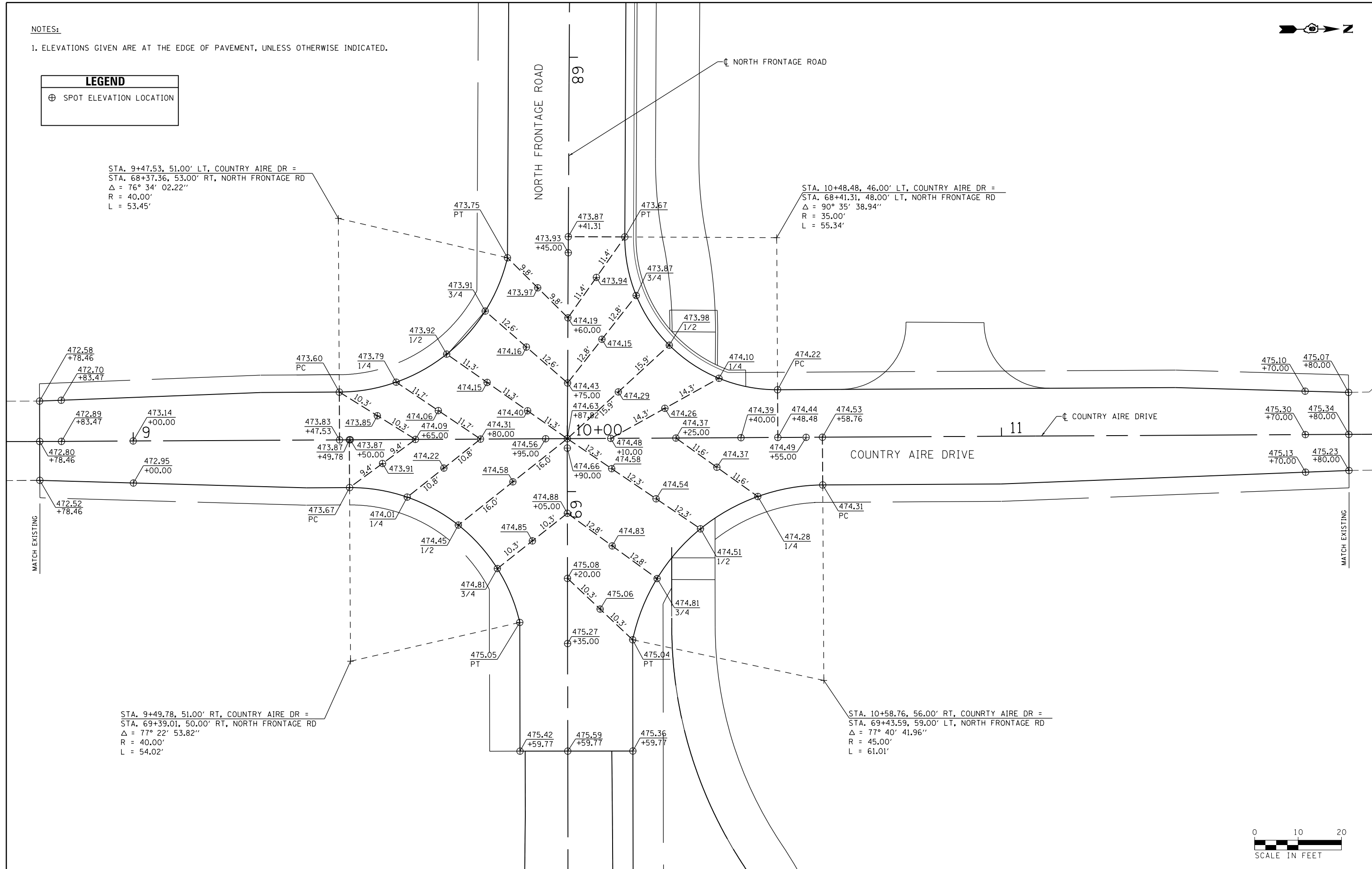
LEGEND	
⊕	SPOT ELEVATION LOCATION

STA. 9+47.53, 51.00' LT, COUNTRY AIRE DR =  
 STA. 68+37.36, 53.00' RT, NORTH FRONTAGE RD  
 $\Delta = 76^\circ 34' 02.22''$   
 R = 40.00'  
 L = 53.45'

STA. 10+48.48, 46.00' LT, COUNTRY AIRE DR =  
 STA. 68+41.31, 48.00' LT, NORTH FRONTAGE RD  
 $\Delta = 90^\circ 35' 38.94''$   
 R = 35.00'  
 L = 55.34'

STA. 9+49.78, 51.00' RT, COUNTRY AIRE DR =  
 STA. 69+39.01, 50.00' RT, NORTH FRONTAGE RD  
 $\Delta = 77^\circ 22' 53.82''$   
 R = 40.00'  
 L = 54.02'

STA. 10+58.76, 56.00' RT, COUNTRY AIRE DR =  
 STA. 69+43.59, 59.00' LT, NORTH FRONTAGE RD  
 $\Delta = 77^\circ 40' 41.96''$   
 R = 45.00'  
 L = 61.01'



FILE NAME =	USER NAME = \$USER*	DESIGNED - KN	REVISED -	<b>STATE OF ILLINOIS DEPARTMENT OF TRANSPORTATION</b>	<b>INTERSECTION DETAILS NORTH FRONTAGE ROAD AND COUNTRY AIRE DRIVE</b>		F.A.P. RTE.	SECTION	COUNTY	TOTAL SHEETS	SHEET NO.		
c:\pwork\pwork\lavenderbo\d0363618\0978221-sht-intersec-20.dgn		DRAWN - AS	REVISED -		SCALE:	SHEET NO. 20 OF 30 SHEETS	STA.	TO STA.	331	(1-3)R-2, N-4, TS-4, HBK-1	WILLIAMSON	733	296
		CHECKED -	REVISED -						DRAWING NO.	1D-20	CONTRACT NO.	78221	
		DATE -	REVISED -						ILLINOIS FED. AID PROJECT				