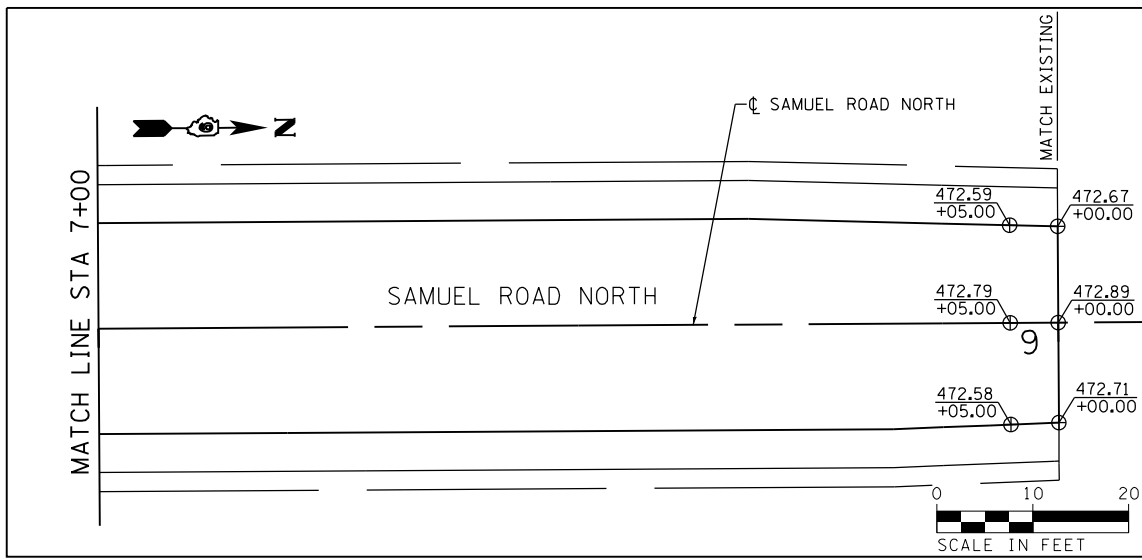
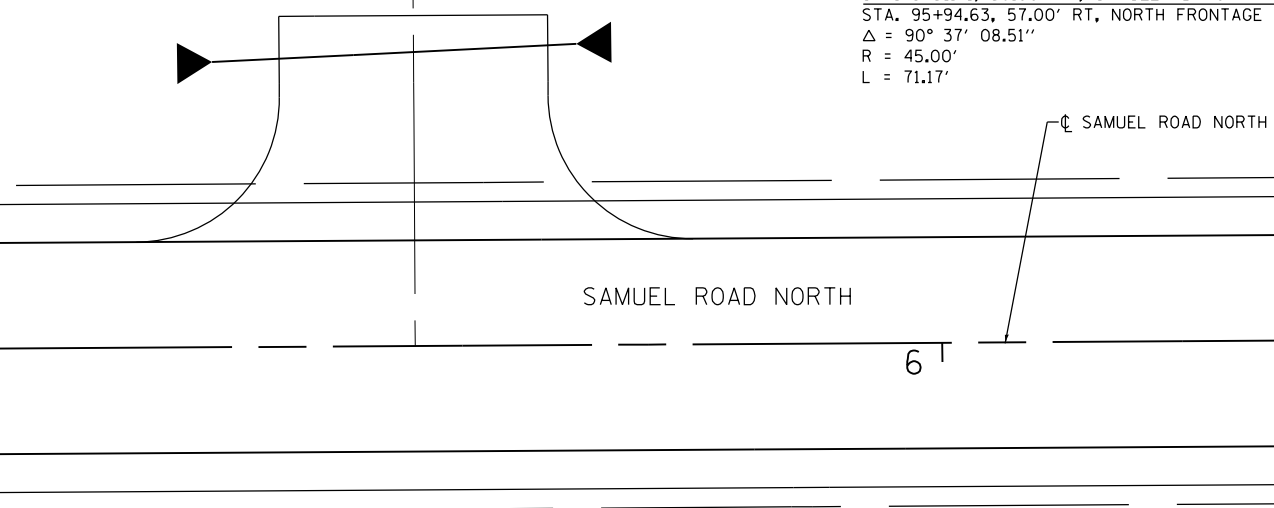


STA. 8+51.41, 56.00' RT, SAMUEL RD NORTH =
 STA. 95+94.63, 57.00' RT, NORTH FRONTAGE RD
 $\Delta = 90^\circ 37' 08.51''$
 $R = 45.00'$
 $L = 71.17'$



STA. 8+50.66, 56.00' LT, SAMUEL RD NORTH =
 STA. 97+06.64, 57.45' RT, NORTH FRONTAGE RD
 $\Delta = 89^\circ 59' 16.15''$
 $R = 45.00'$
 $L = 70.68'$

STA. 7+36.20, 56.00' LT, SAMUEL RD NORTH =
 STA. 97+07.87, 57.00' LT, NORTH FRONTAGE RD
 $\Delta = 90^\circ 37' 08.51''$
 $R = 45.00'$
 $L = 71.17'$

| LEGEND | |
|----------|-------------------------|
| \oplus | SPOT ELEVATION LOCATION |

NOTES:
 1. ELEVATIONS GIVEN ARE AT THE EDGE OF PAVEMENT, UNLESS OTHERWISE INDICATED.



| | | | |
|--|-----------------------------|---------------|-----------|
| FILE NAME = | USER NAME = sUSERs | DESIGNED - KN | REVISED - |
| ct:\pw\work\p\dot\lavenderba\d0363618\078221-sht-intersec-21.dgn | | DRAWN - AS | REVISED - |
| | PLOT SCALE = 20.0000' / in. | CHECKED - | REVISED - |
| | PLOT DATE = 1/31/2014 | DATE - | REVISED - |

**STATE OF ILLINOIS
 DEPARTMENT OF TRANSPORTATION**

| | |
|--|---------------------------|
| INTERSECTION DETAILS | |
| NORTH FRONTAGE ROAD AND SAMUEL ROAD NORTH | |
| SCALE: | SHEET NO. 21 OF 30 SHEETS |
| STA. | TO STA. |

| | | | | |
|---------------------------|----------------------------|--------------------|--------------|-----------|
| F.A.P. RTE. | SECTION | COUNTY | TOTAL SHEETS | SHEET NO. |
| 331 | (1-3)R-2, N-4, TS-4, HBK-1 | WILLIAMSON | 733 | 297 |
| DRAWING NO. ID-21 | | CONTRACT NO. 78221 | | |
| ILLINOIS FED. AID PROJECT | | | | |