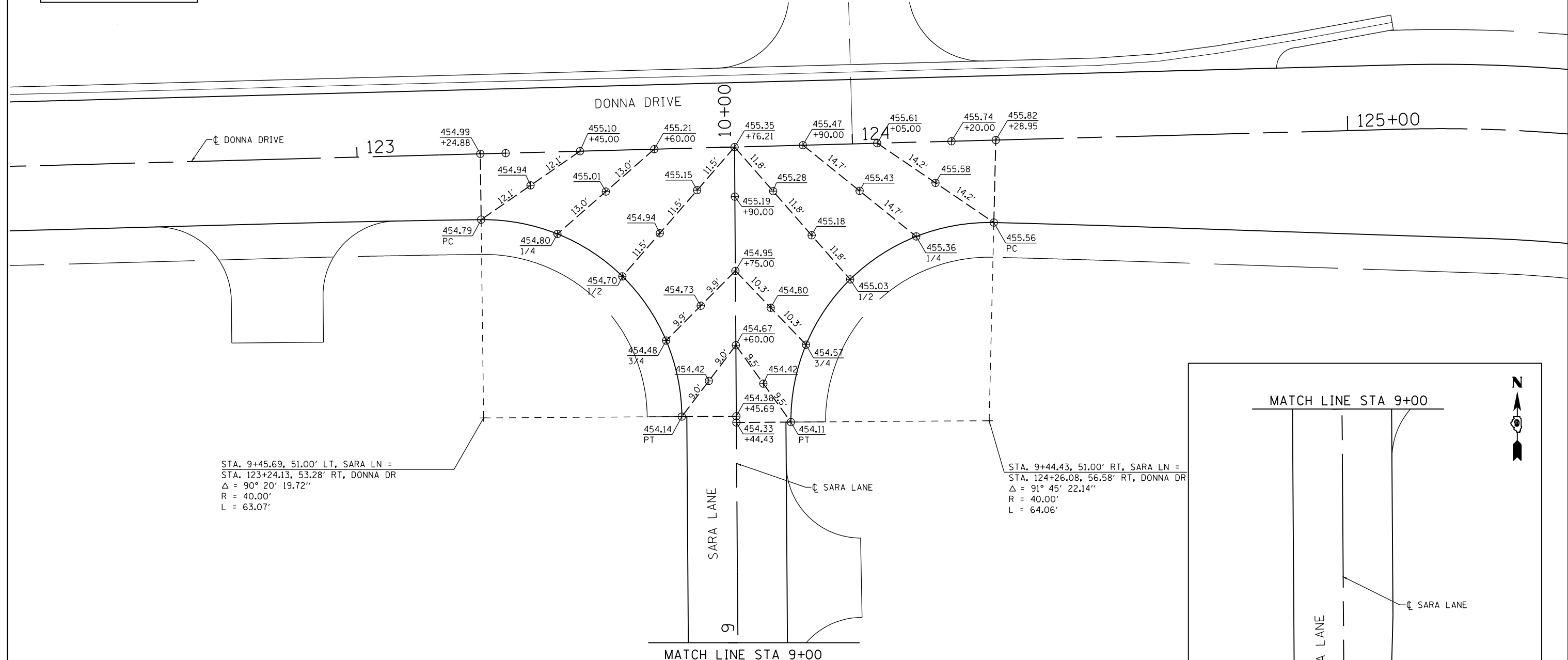


NOTES:

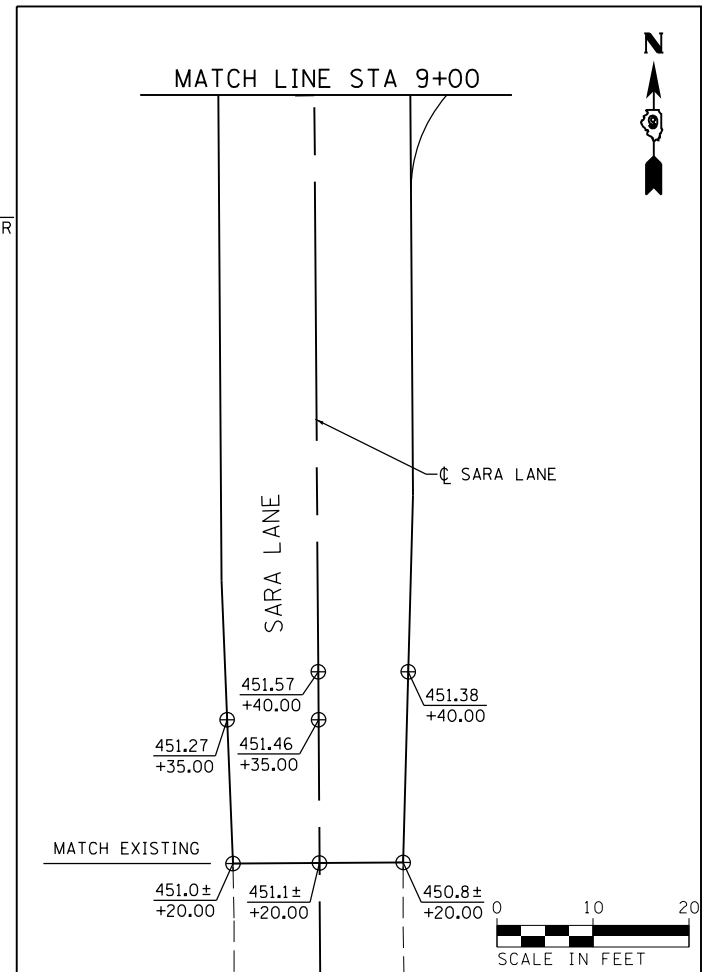
1. ELEVATIONS GIVEN ARE AT THE EDGE OF PAVEMENT, UNLESS OTHERWISE INDICATED.

LEGEND	
⊕	SPOT ELEVATION LOCATION



STA. 9+45.69, 51.00' LT, SARA LN =
 STA. 123+24.13, 53.28' RT, DONNA DR
 $\Delta = 90^\circ 20' 19.72''$
 $R = 40.00'$
 $L = 63.07'$

STA. 9+44.43, 51.00' RT, SARA LN =
 STA. 124+26.08, 56.58' RT, DONNA DR
 $\Delta = 91^\circ 45' 22.14''$
 $R = 40.00'$
 $L = 64.06'$



FILE NAME =	USER NAME = \$USER\$	DESIGNED - KN	REVISED -
c:\pwwork\pwwork\lenderba\d0363618\078221-sht-intersec-24.dgn		DRAWN - AS	REVISED -
PLOT SCALE = 20.0000' / in.		CHECKED -	REVISED -
PLOT DATE = 1/31/2014		DATE -	REVISED -

**STATE OF ILLINOIS
 DEPARTMENT OF TRANSPORTATION**

**INTERSECTION DETAILS
 DONNA DRIVE AND SARA LANE**

SCALE: SHEET NO. 24 OF 30 SHEETS STA. TO STA.

F.A.P. RTE.	SECTION	COUNTY	TOTAL SHEETS	SHEET NO.
331	(1-3)R-2, N-4, TS-4, HBK-1	WILLIAMSON	733	300
DRAWING NO. ID-24		CONTRACT NO. 78221		
ILLINOIS FED. AID PROJECT				