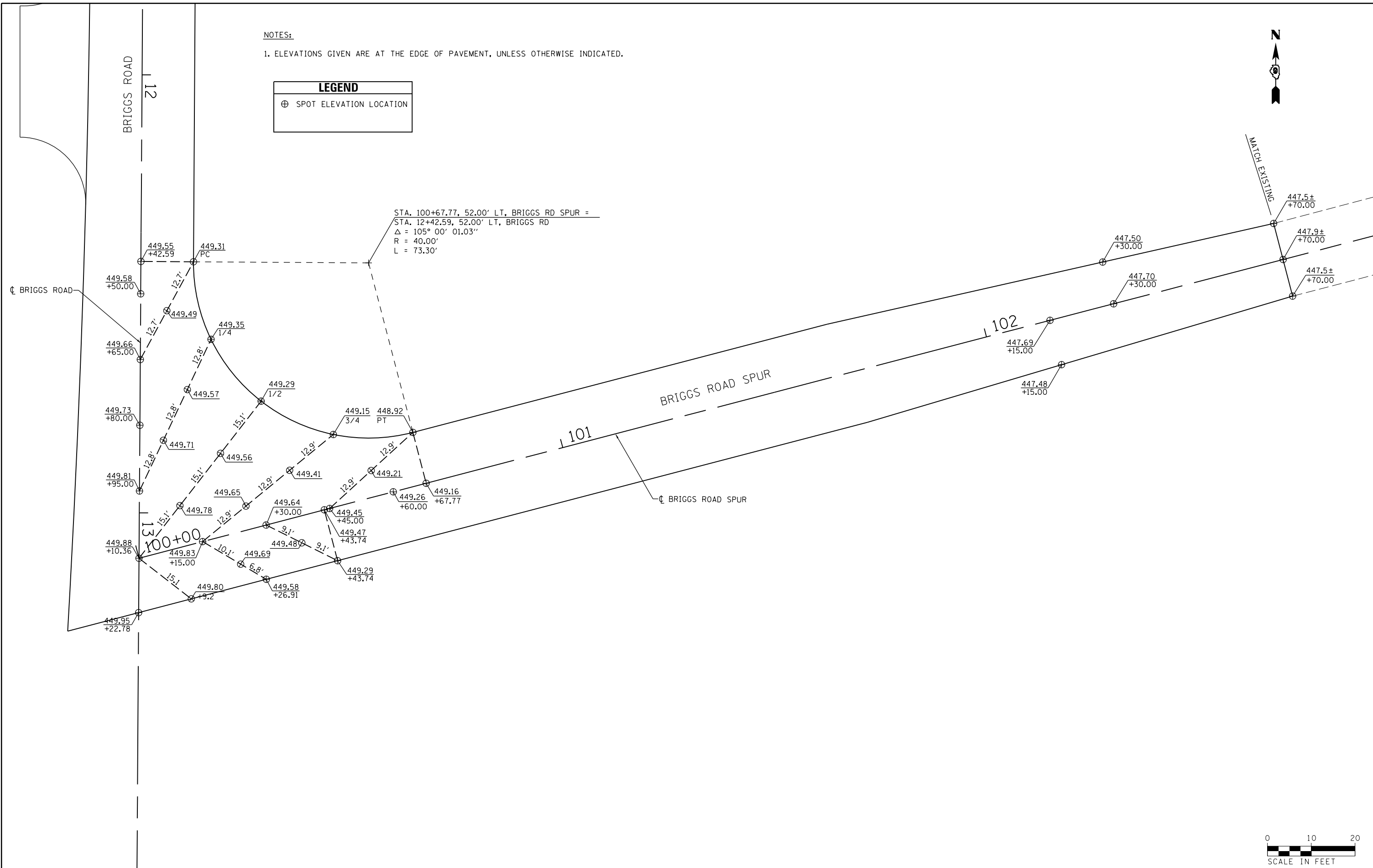
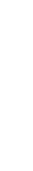


NOTES:

1. ELEVATIONS GIVEN ARE AT THE EDGE OF PAVEMENT, UNLESS OTHERWISE INDICATED.

LEGEND	
⊕	SPOT ELEVATION LOCATION



STA. 100+67.77, 52.00' LT, BRIGGS RD SPUR =  
 STA. 12+42.59, 52.00' LT, BRIGGS RD  
 $\Delta = 105^\circ 00' 01.03''$   
 $R = 40.00'$   
 $L = 73.30'$



FILE NAME =	USER NAME = \$USER\$	DESIGNED - KN	REVISED -
ci:\pw\work\p\dot\lavenderba\d0363618\078221-sht-intersec-27.dgn		DRAWN - AS	REVISED -
PLOT SCALE = 1/9992" / in.		CHECKED -	REVISED -
PLOT DATE = 1/31/2014		DATE -	REVISED -

**STATE OF ILLINOIS  
 DEPARTMENT OF TRANSPORTATION**

**INTERSECTION DETAILS  
 BRIGGS ROAD AND BRIGGS ROAD SPUR**

SCALE: SHEET NO. 27 OF 30 SHEETS STA. TO STA.

F.A.P. RTE.	SECTION	COUNTY	TOTAL SHEETS	SHEET NO.
331	(1-3)R-2, N-4, TS-4, HBK-1	WILLIAMSON	733	303
DRAWING NO. <b>ID-27</b>			CONTRACT NO. 78221	
ILLINOIS FED. AID PROJECT				