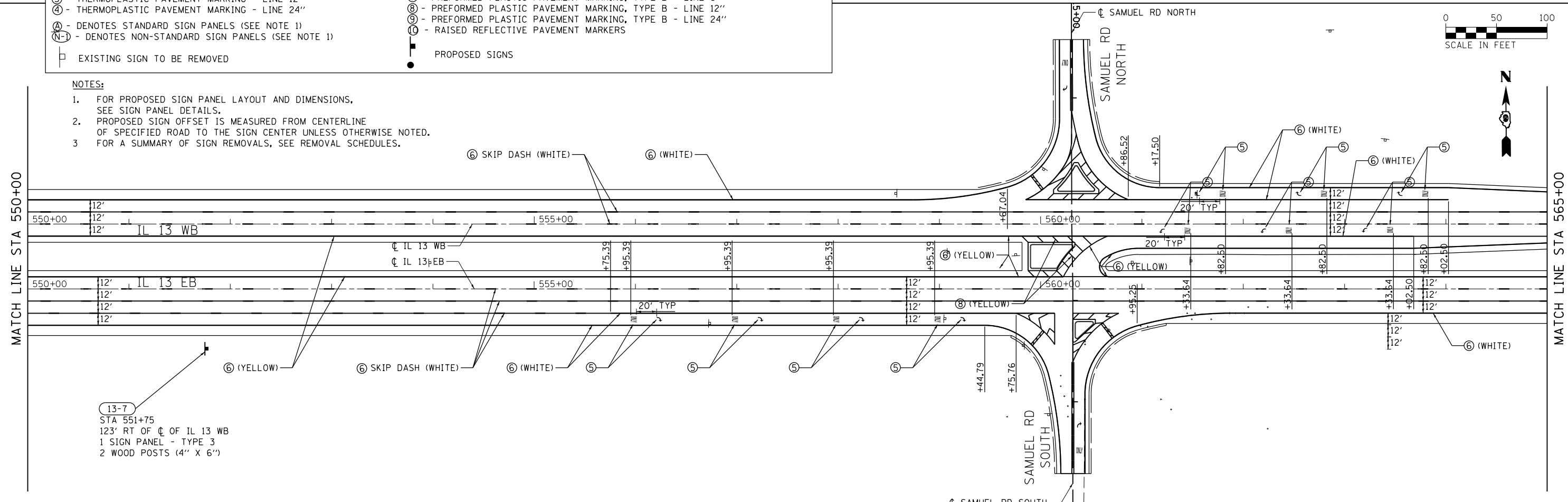
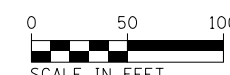


LEGEND

① - THERMOPLASTIC PAVEMENT MARKING - LETTERS AND SYMBOLS	⑥ - PREFORMED PLASTIC PAVEMENT MARKING, TYPE B - LETTERS AND SYMBOLS
② - THERMOPLASTIC PAVEMENT MARKING - LINE 4"	⑦ - PREFORMED PLASTIC PAVEMENT MARKING, TYPE B - LINE 4"
③ - THERMOPLASTIC PAVEMENT MARKING - LINE 12"	⑧ - PREFORMED PLASTIC PAVEMENT MARKING, TYPE B - LINE 8"
④ - THERMOPLASTIC PAVEMENT MARKING - LINE 24"	⑨ - PREFORMED PLASTIC PAVEMENT MARKING, TYPE B - LINE 12"
Ⓐ - DENOTES STANDARD SIGN PANELS (SEE NOTE 1)	⑩ - PREFORMED PLASTIC PAVEMENT MARKING, TYPE B - LINE 24"
Ⓝ - DENOTES NON-STANDARD SIGN PANELS (SEE NOTE 1)	Ⓜ - RAISED REFLECTIVE PAVEMENT MARKERS
□ - EXISTING SIGN TO BE REMOVED	● - PROPOSED SIGNS

- NOTES:**
- FOR PROPOSED SIGN PANEL LAYOUT AND DIMENSIONS, SEE SIGN PANEL DETAILS.
 - PROPOSED SIGN OFFSET IS MEASURED FROM CENTERLINE OF SPECIFIED ROAD TO THE SIGN CENTER UNLESS OTHERWISE NOTED.
 - FOR A SUMMARY OF SIGN REMOVALS, SEE REMOVAL SCHEDULES.



FILE NAME =	USER NAME = \$USER\$	DESIGNED - KN	REVISED -	STATE OF ILLINOIS DEPARTMENT OF TRANSPORTATION	PAVEMENT MARKING AND SIGNING PLANS IL 13	F.A.P. RTE.	SECTION	COUNTY	TOTAL SHEETS	SHEET NO.
c:\pwwork\pwwork\lenderba\d0363618\d078221-sht.pmk-03.dgn		DRAWN - AS	REVISED -			331	(1-3)R-2, N-4, TS-4, HBK-1	WILLIAMSON	733	314
PLOT SCALE = 100.0000' / 1"		CHECKED -	REVISED -			DRAWING NO. PM-03		CONTRACT NO. 78221		
PLOT DATE = 1/31/2014		DATE -	REVISED -			SCALE: SHEET NO. 3 OF 28 SHEETS STA. 535+00 TO STA. 565+00		ILLINOIS FED. AID PROJECT		