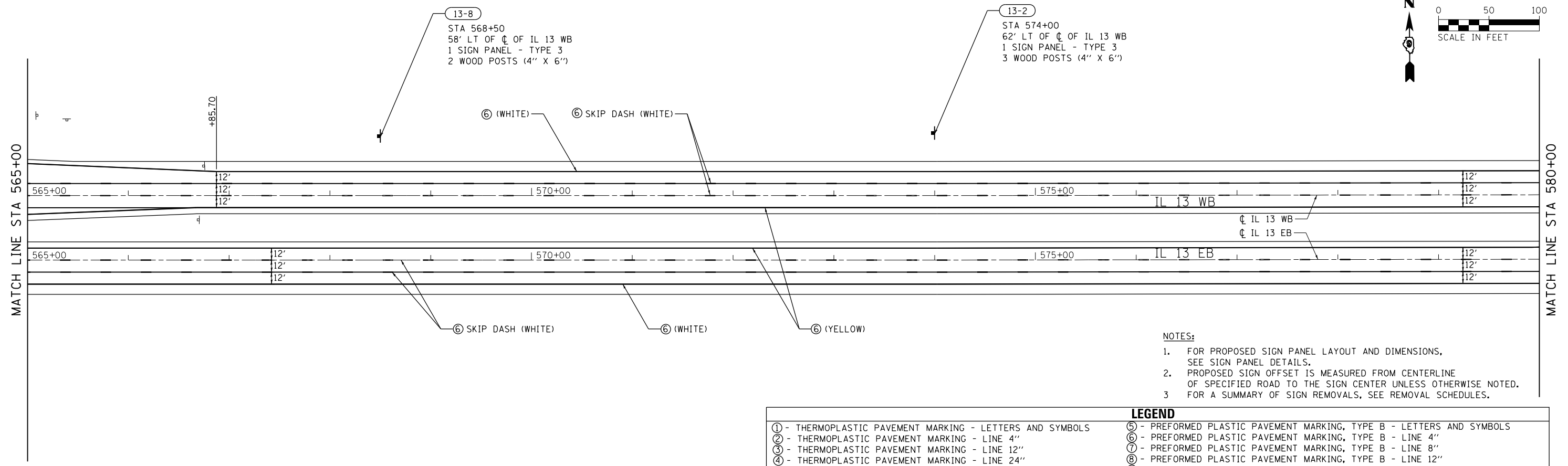


MATCH LINE STA 565+00

MATCH LINE STA 580+00

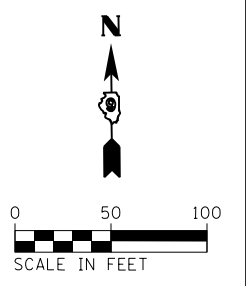
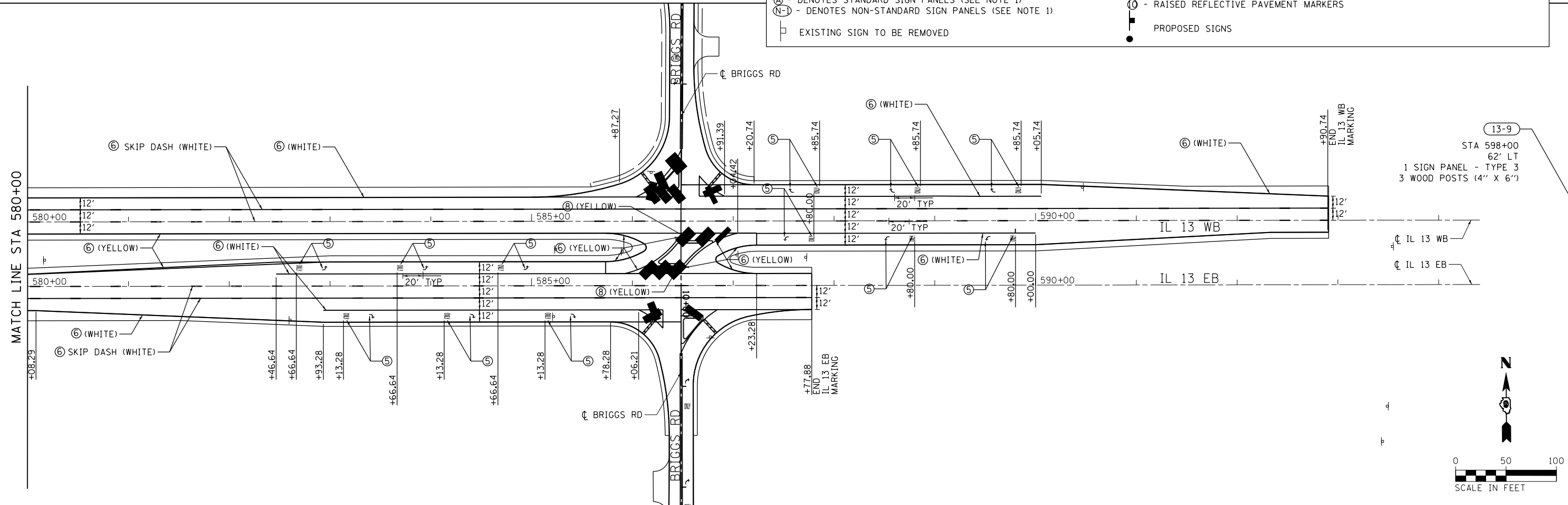


- NOTES:**
1. FOR PROPOSED SIGN PANEL LAYOUT AND DIMENSIONS, SEE SIGN PANEL DETAILS.
 2. PROPOSED SIGN OFFSET IS MEASURED FROM CENTERLINE OF SPECIFIED ROAD TO THE SIGN CENTER UNLESS OTHERWISE NOTED.
 3. FOR A SUMMARY OF SIGN REMOVALS, SEE REMOVAL SCHEDULES.

LEGEND	
(1) - THERMOPLASTIC PAVEMENT MARKING - LETTERS AND SYMBOLS	(6) - PREFORMED PLASTIC PAVEMENT MARKING, TYPE B - LETTERS AND SYMBOLS
(2) - THERMOPLASTIC PAVEMENT MARKING - LINE 4"	(6) - PREFORMED PLASTIC PAVEMENT MARKING, TYPE B - LINE 4"
(3) - THERMOPLASTIC PAVEMENT MARKING - LINE 12"	(7) - PREFORMED PLASTIC PAVEMENT MARKING, TYPE B - LINE 8"
(4) - THERMOPLASTIC PAVEMENT MARKING - LINE 24"	(8) - PREFORMED PLASTIC PAVEMENT MARKING, TYPE B - LINE 12"
(A) - DENOTES STANDARD SIGN PANELS (SEE NOTE 1)	(9) - PREFORMED PLASTIC PAVEMENT MARKING, TYPE B - LINE 24"
(N) - DENOTES NON-STANDARD SIGN PANELS (SEE NOTE 1)	(10) - RAISED REFLECTIVE PAVEMENT MARKERS
[Symbol] - EXISTING SIGN TO BE REMOVED	[Symbol] - PROPOSED SIGNS

MATCH LINE STA 580+00

13-9
STA 598+00
62' LT
1 SIGN PANEL - TYPE 3
3 WOOD POSTS (4" X 6")



FILE NAME =	USER NAME = \$USER\$	DESIGNED - KN	REVISED -	STATE OF ILLINOIS DEPARTMENT OF TRANSPORTATION	PAVEMENT MARKING AND SIGNING PLANS IL 13	F.A.P. RTE.	SECTION	COUNTY	TOTAL SHEETS	SHEET NO.	
ci:\pwork\pwork\lavenderba\d0363618\0978221-sht\pmk-04.dgn		DRAWN - AS	REVISED -			331	(1-3)R-2, N-4, TS-4, HBK-1	WILLIAMSON	733	315	
	PLOT SCALE = 100.0000' / 1" =	CHECKED -	REVISED -			DRAWING NO.	PM-04	CONTRACT NO.	78221		
	PLOT DATE = 1/31/2014	DATE -	REVISED -			SCALE:	SHEET NO. 4 OF 28 SHEETS	STA. 565+00 TO STA. 595+00	ILLINOIS FED. AID PROJECT		