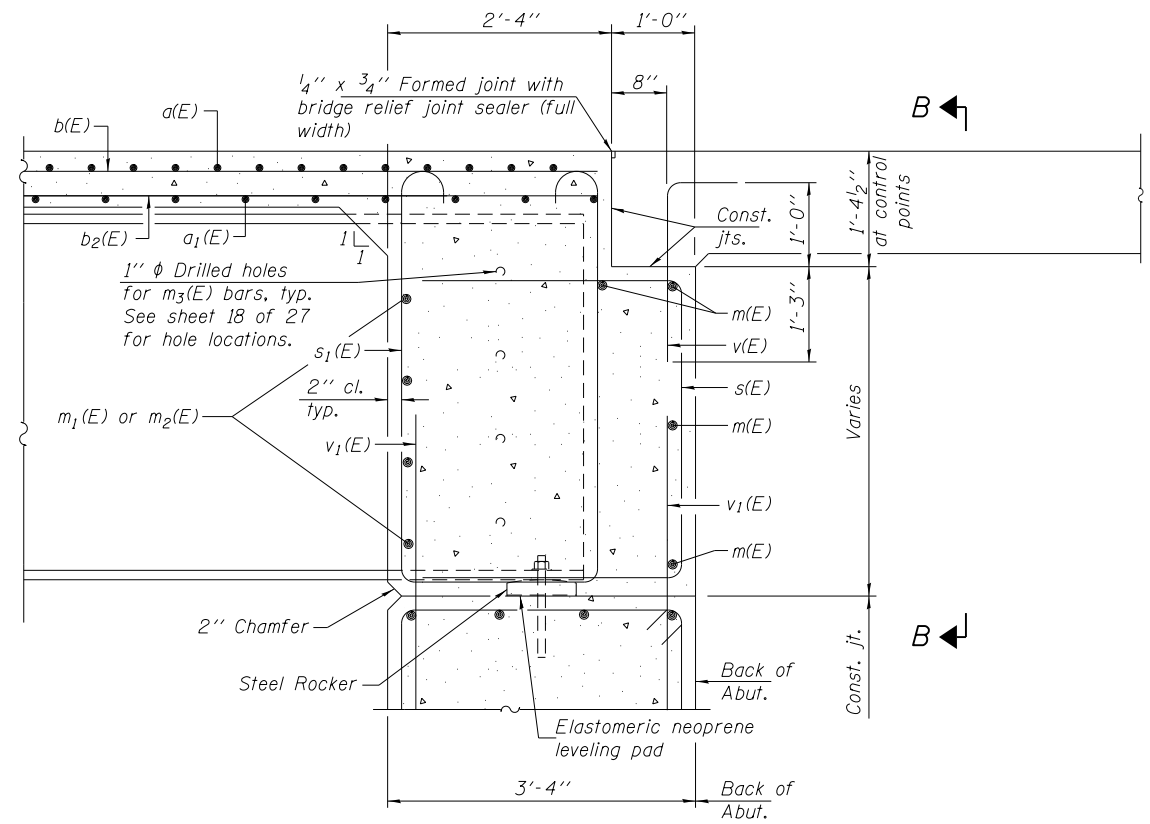
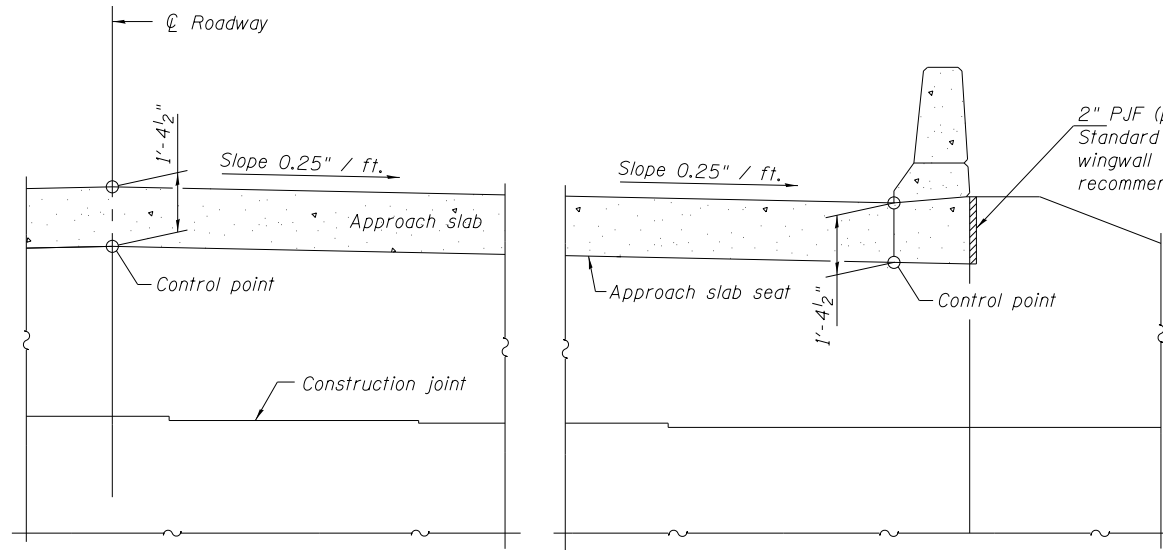


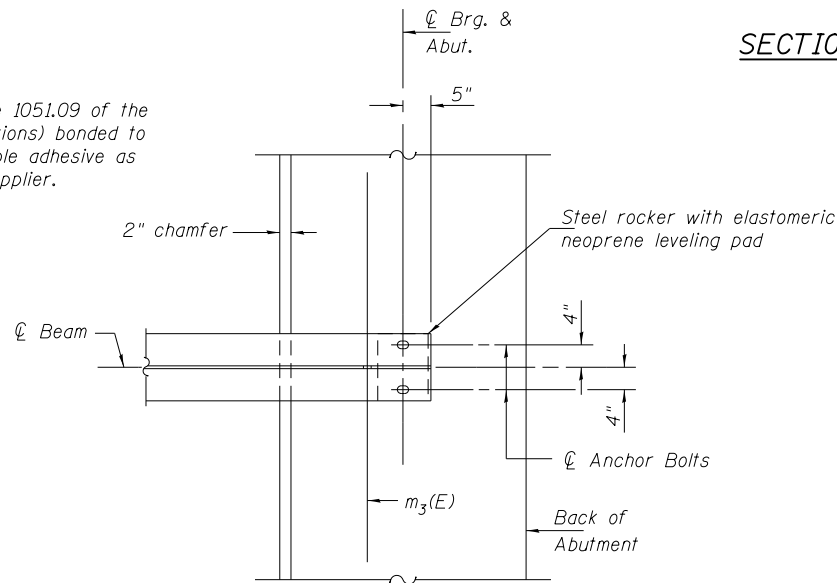
**DIAPHRAGM ELEVATION AT ABUTMENT**



**SECTION A-A**



**SECTION B-B**



**PARTIAL PLAN AT ABUTMENT**  
(Showing bottom flange of beam)

**MIN. BAR LAP**  
#6 bar = 3'-10"

Notes:  
Reinforcement bars in diaphragm are billed with superstructure on sheet 10 of 27.  
Concrete in diaphragm is included with Concrete Superstructure on sheet 10 of 27.  
For details of bars s(E), s1(E) and v(E) see sheet 10 of 27.  
The approach slab seat shall have a constant slope determined from the control points shown.  
For bearing details see sheet 19 of 27.

**ABUTMENT CONTROL POINT ELEVATIONS**

LOCATION	WEST	PG	EAST
N. ABUT.	475.79	476.21	475.55
S. ABUT.	475.04	475.45	474.80

DSI-2440-0

8-31-12

FILE NAME = 1000099-978221-019-Diaphragm.dgn	USER NAME = mfox	DESIGNED - DF	REVISED -
<b>CH2MHILL</b>	PLOT SCALE = 0.1667' / in.	CHECKED - MN	REVISED -
	PLOT DATE = 2/28/2014	DRAWN - AK	REVISED -
		CHECKED - JE	REVISED -

**STATE OF ILLINOIS**  
**DEPARTMENT OF TRANSPORTATION**

**INTEGRAL ABUTMENT DIAPHRAGM DETAILS**  
**STRUCTURE NO. 100-0099**

SHEET NO. 11 OF 27 SHEETS

F.A.P. RTE.	SECTION	COUNTY	TOTAL SHEETS	SHEET NO.
331	(1-3)R-2, N-4, TS-4, HKB-1	WILLIAMSON	733	368
DRAWING NO. BR-11		CONTRACT NO. 78221		

ILLINOIS FED. AID PROJECT