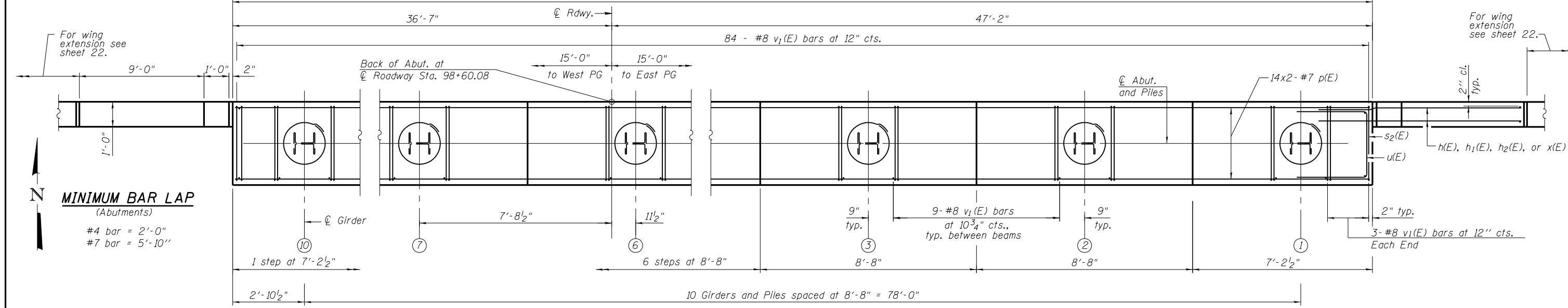
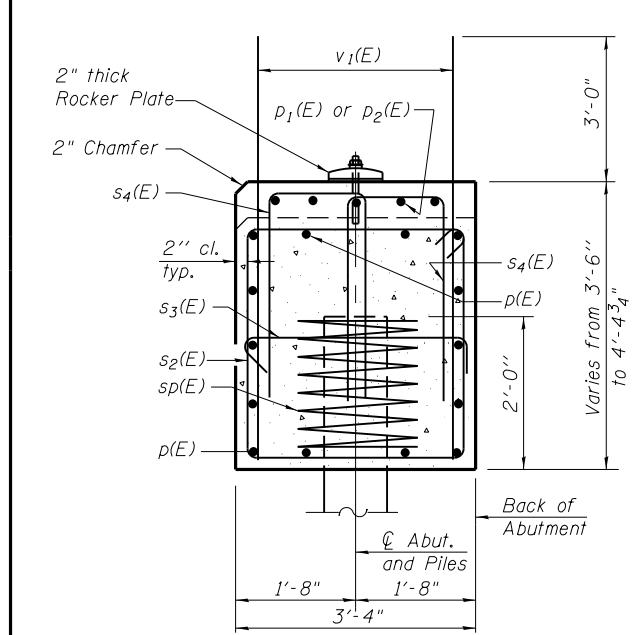


ELEVATION
(North Abutment looking north)
83'-9"

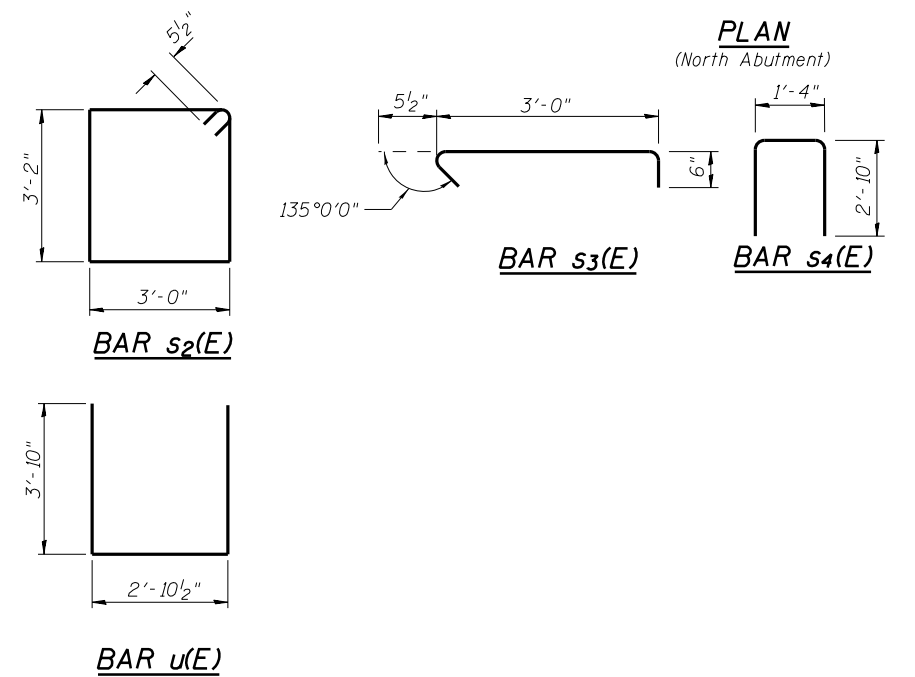


PLAN
(North Abutment)

MINIMUM BAR LAP
(Abutments)
#4 bar = 2'-0"
#7 bar = 5'-10"



SEC. THRU ABUT.



Notes:
Pour steps monolithically with cap.
Excavation, concrete and reinforcement bars are billed with substructure on sheet 22 of 27.
Bars indicated thus 20x3-#5 etc., indicates 20 lines of bars with 3 lengths per line.

SEAT ELEVATIONS	
GIRDER	ELEVATION
1	472.11
2	472.29
3	472.47
4	472.65
5	472.83
6	473.01
7	472.87
8	472.69
9	472.51
10	472.33

PILE DATA
Type: HP 14 x 89
Nominal Required Bearing: 677 kips
Factored Resistance Available: 372 kips
Est. Length: 56'-0"
No. Production Piles: 9
No. Test Piles: 1 at N. Abutment

Piles shall be driven through 1'-10" diameter precored holes extending to elevation 427.6' according to Article 512.09 (c) of the Standard Specifications. Cost included in driving piles.

