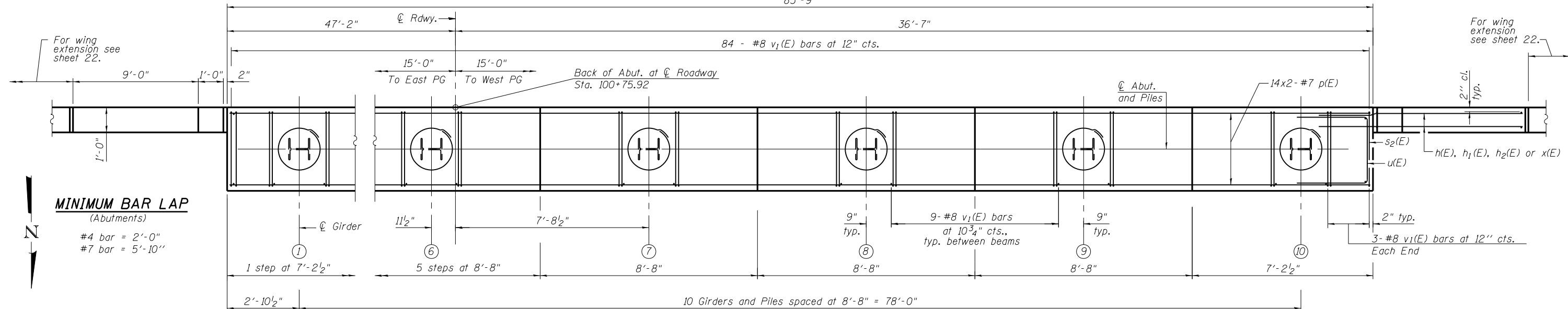
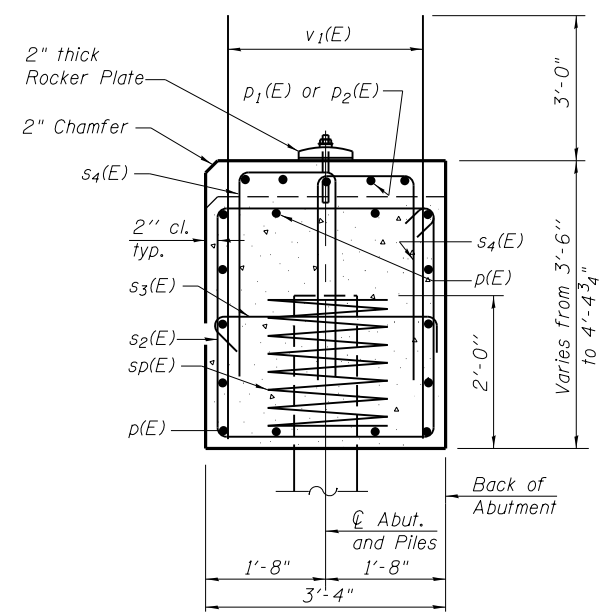


ELEVATION
(South Abutment looking south)
83'-9"

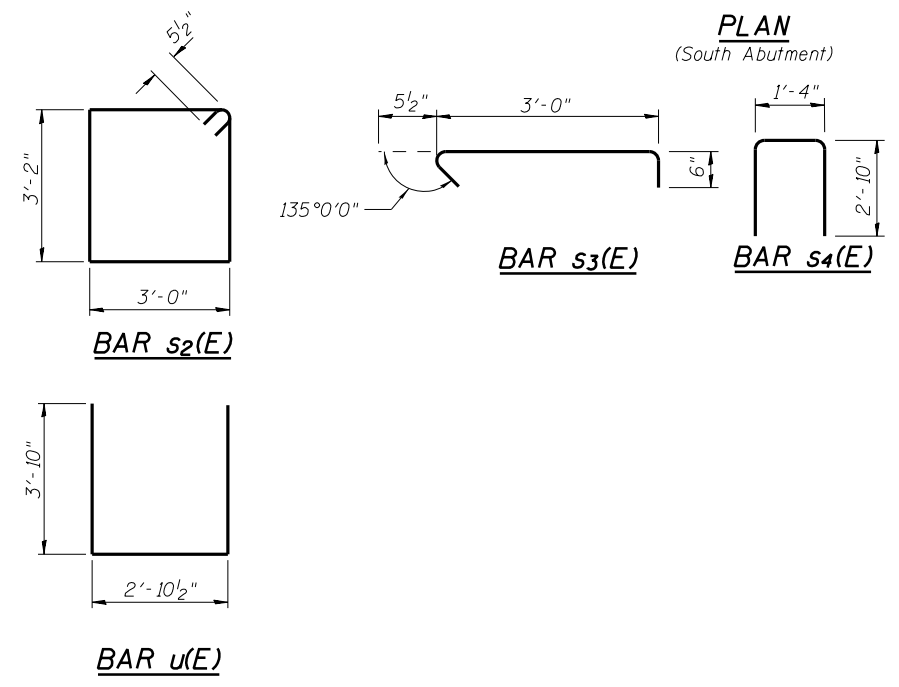


PLAN
(South Abutment)

MINIMUM BAR LAP
(Abutments)
#4 bar = 2'-0"
#7 bar = 5'-10"



SEC. THRU ABUT.



Notes:
Pour steps monolithically with cap.
Excavation, concrete and reinforcement bars are billed with substructure on sheet 22 of 27.
Bars indicated thus 20x3-#5 etc., indicates 20 lines of bars with 3 lengths per line.

SEAT ELEVATIONS	
GIRDER	ELEVATION
1	471.37
2	471.55
3	471.73
4	471.91
5	472.09
6	472.27
7	472.13
8	471.95
9	471.77
10	471.59

PILE DATA

Type: HP 14 x 89
Nominal Required Bearing: 677 kips
Factored Resistance Available: 372 kips
Est. Length: 56'-0"
No. Production Piles: 10

Piles shall be driven through 1'-10" diameter precored holes extending to elevation 424.8' according to Article 512.09 (c) of the Standard Specifications. Cost included in driving piles.

FILE NAME =	USER NAME = \$USER\$	DESIGNED - DF	REVISED -
ce:\pw\work\p\dot\lavenderbo\d0363618\100099-978221-021-SAbutment.dgn		CHECKED - MN	REVISED -
CH2MHILL	PLOT SCALE = 0.1667' / 1"	DRAWN - AK	REVISED -
	PLOT DATE = 1/31/2014	CHECKED - MN	REVISED -

STATE OF ILLINOIS
DEPARTMENT OF TRANSPORTATION

SOUTH ABUTMENT PLAN AND ELEVATION
STRUCTURE NO. 100-0099
SHEET NO. 21 OF 27 SHEETS

F.A.P. RTE.	SECTION	COUNTY	TOTAL SHEETS	SHEET NO.
331	(1-3)R-2,-N-4,-TS-4,-HBK-1	WILLIAMSON	733	378
DRAWING NO. BR-21		CONTRACT NO. 78221		
ILLINOIS FED. AID PROJECT				