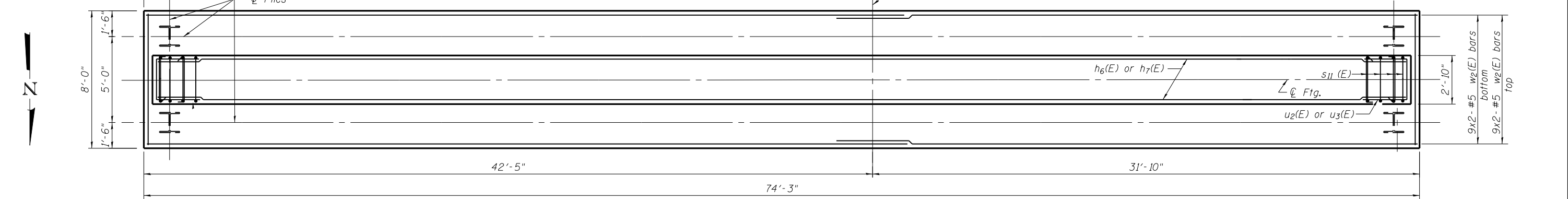


**PILE DATA**

Type: HP 14x89  
 Nominal Required Bearing: 705 kips  
 Factored Resistance Available: 388 kips  
 Est. Length: 34'  
 No. Production Piles: 20

75 - #8 t<sub>3</sub>(E) @ 12" cts. top  
 100 - #9 t<sub>2</sub>(E) @ 9" cts. bottom

9 Spaces at 7'-11" = 71'-3"



**MINIMUM BAR LAP**  
(Pier)

#4 bar = 2'-0"  
 #5 bar = 3'-8" (horiz.)  
 #9 bar = 7'-5"

**Notes:**

Space reinforcement in cap to miss anchor bolts. Pour steps monolithically with cap.  
 For details of piles, see sheet 25 of 27.  
 For Sections A-A and B-B, see sheet 24 of 27.  
 Bars indicated thus 20x3-#5 etc., indicates 20 lines of bars with 3 lengths per line.