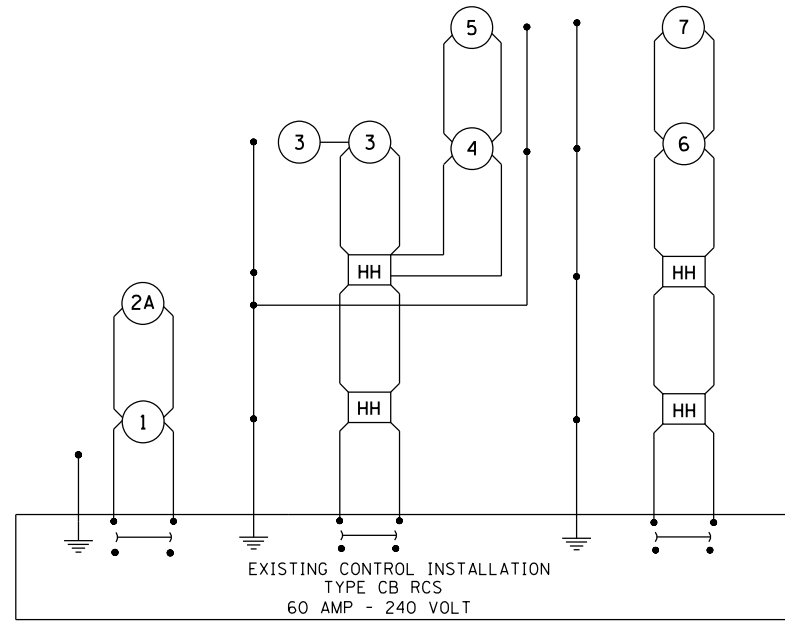


WIRING DIAGRAM FOR LIGHTING



NOTES:

1. FOR SIZE AND TYPE OF CABLE USED FOR LIGHTING INSTALLATION SEE CABLE DIAGRAM SHEET NO.
2. POWER TO CONTROL INSTALLATION SHALL REMAIN AS IS.

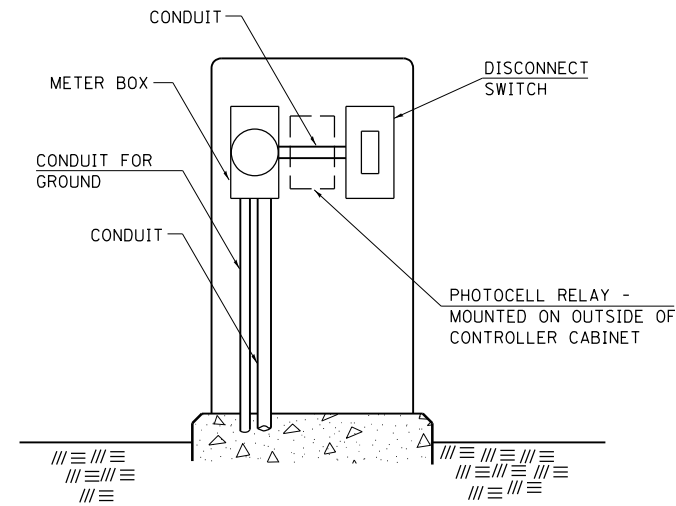
LEGEND FOR WIRING DIAGRAM

- HH** INDICATES PROPOSED TRAFFIC SIGNAL HANDHOLE.
NOTE: THE SIGNAL CONDUIT SYSTEM SHALL BE UTILIZED TO INSTALL WIRING FOR ALL THE PROPOSED LIGHTING SYSTEM, EXCEPT FOR LIGHT POLES NO.
- 1** NUMBER INDICATES POSITION OF POLE IN WIRING DIAGRAM.
- INDICATES PROPOSED GROUND AT LIGHT POLE AND CONTROL INSTALLATION.
- ⏏ INDICATES CONTINUOUS GROUND FROM CONTROL INSTALLATION.

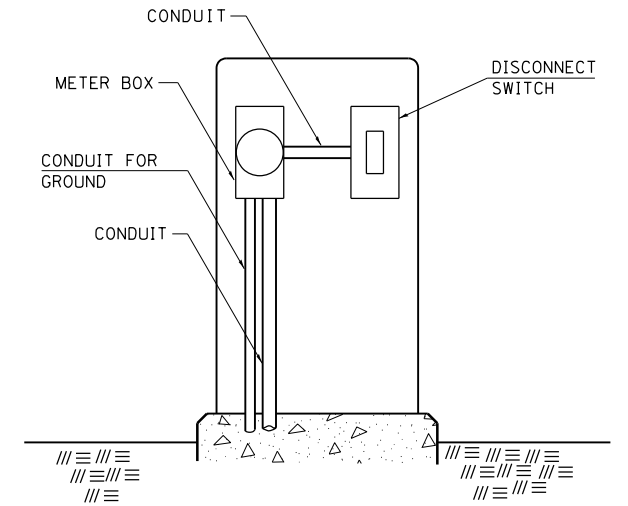
REVISIONS	
DRAWN	7-27-93
REVISED	5-14-02
RESIZED	5-8-08
REVIEWED	5-17-13

STD. 9-59

SERVICE INSTALLATION DETAILS



**SERVICE INSTALLATION (SPECIAL)
WITH PHOTOCELL RELAY**



SERVICE INSTALLATION (SPECIAL)

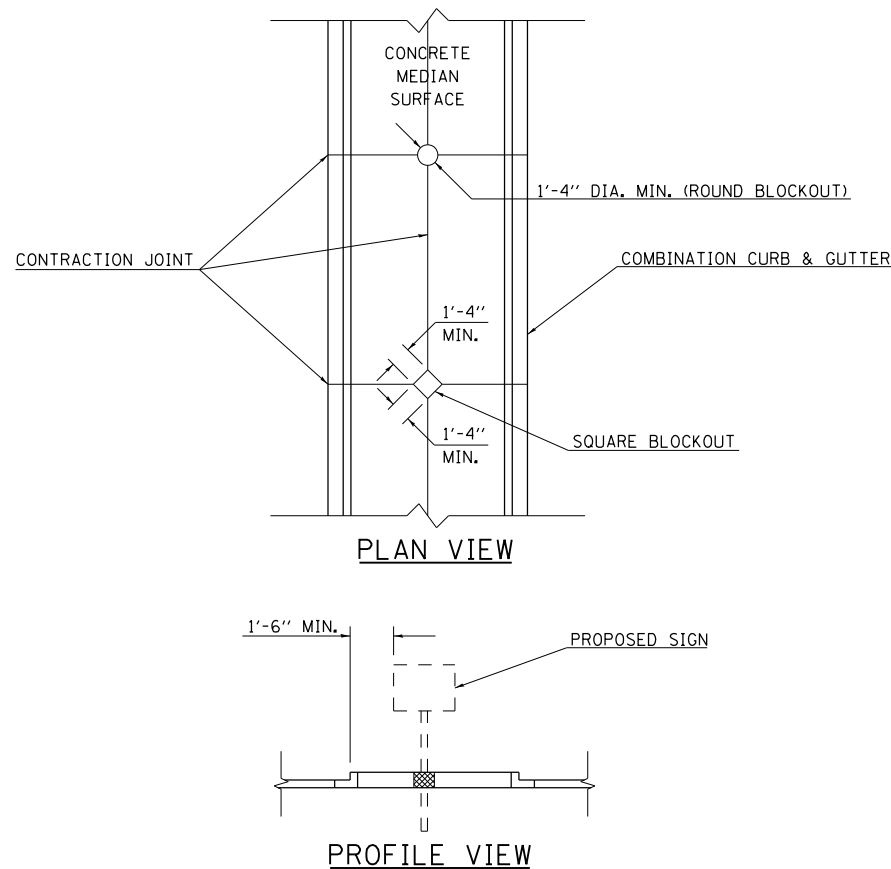
NOTE:

MATERIAL AND SIZE OF CONDUIT AND CABLE AS REQUIRED BY UTILITY COMPANY

REVISIONS	
DRAWN	1-31-90
REVISED	2-24-92
RESIZED	5-7-08
REVIEWED	5-17-13

STD. 9-68

SIGN POST BLOCKOUT



STD. 9-107

REVISIONS	
DRAWN	4-5-99
RESIZED	5-7-08

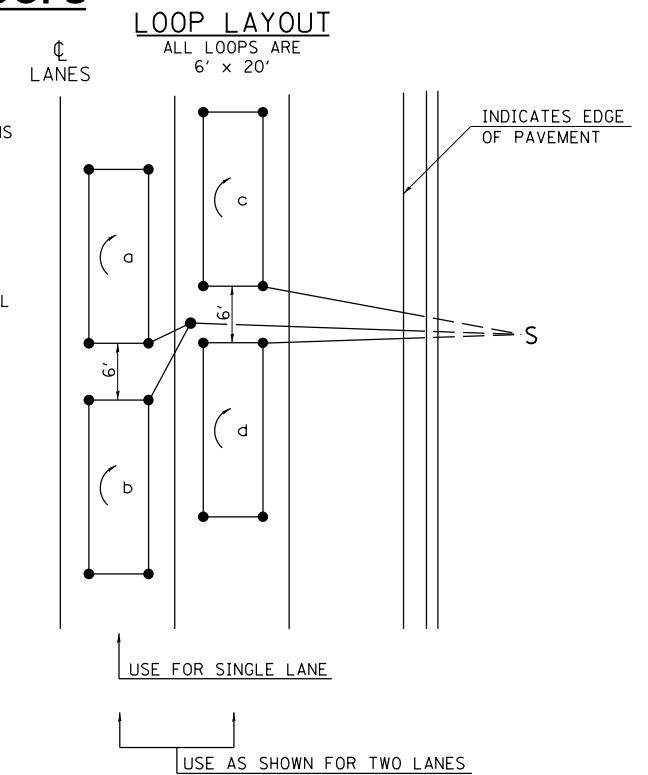
DETAIL OF DETECTOR LOOPS

NOTES

1. THE DETECTOR LOOPS SHALL BE TYPE 1. EACH DETECTOR LOOP SHALL HAVE 3 TURNS OF LOOP WIRE AND BE INSTALLED IN ACCORDANCE WITH THE APPLICABLE PORTIONS OF SECTION 886 OF THE STANDARD SPECIFICATIONS FOR TRAFFIC CONTROL ITEMS.
2. BEGINNING LEAD WIRES SHALL BE CONNECTED TO THE BLACK LEAD AND THE ENDING LEAD WIRES SHALL BE CONNECTED TO THE WHITE LEAD OF THE TWIN TWISTED FEED CABLES AT THE SPLICE POINT.
3. WHERE THE LOOPS ARE INSTALLED PRIOR TO RESURFACING, THE LOOP CORNERS SHALL BE DIAGONALLY CUT.

LOOP LEGEND

- () CLOCKWISE ROTATION FOR LOOP WIRES
- S INDICATES SPLICE POINT FOR DETECTOR LOOP LEAD
- INDICATES 2" CORE-DRILL



DETAIL 6' x 20' DETECTOR LOOPS

REVISIONS	
REDRAWN	5-13-02
REVISED	10-27-05
REVISED	3-26-08
REDRAWN	3-16-11
REVISED	4-12-13

STD. 9-92

FILE NAME =	USER NAME = \$USER\$	DESIGNED - KN	REVISED -
et:\pw\work\p\dot\lavenderba\d0363618\078221-sht-details-dd-03.dgn		DRAWN - AS	REVISED -
	PLOT SCALE = 2.0000' / in.	CHECKED -	REVISED -
	PLOT DATE = 1/31/2014	DATE -	REVISED -

**STATE OF ILLINOIS
DEPARTMENT OF TRANSPORTATION**

**DISTRICT DETAILS
9-59, 9-68, 9-107**

SCALE: SHEET NO. 3 OF 8 SHEETS STA. TO STA.

F.A.P. RTE.	SECTION	COUNTY	TOTAL SHEETS	SHEET NO.
331	(1-3)R-2, N-4, TS-4, HBK-1	WILLIAMSON	733	395
DRAWING NO.	DD-03	CONTRACT NO.	78221	
ILLINOIS FED. AID PROJECT				