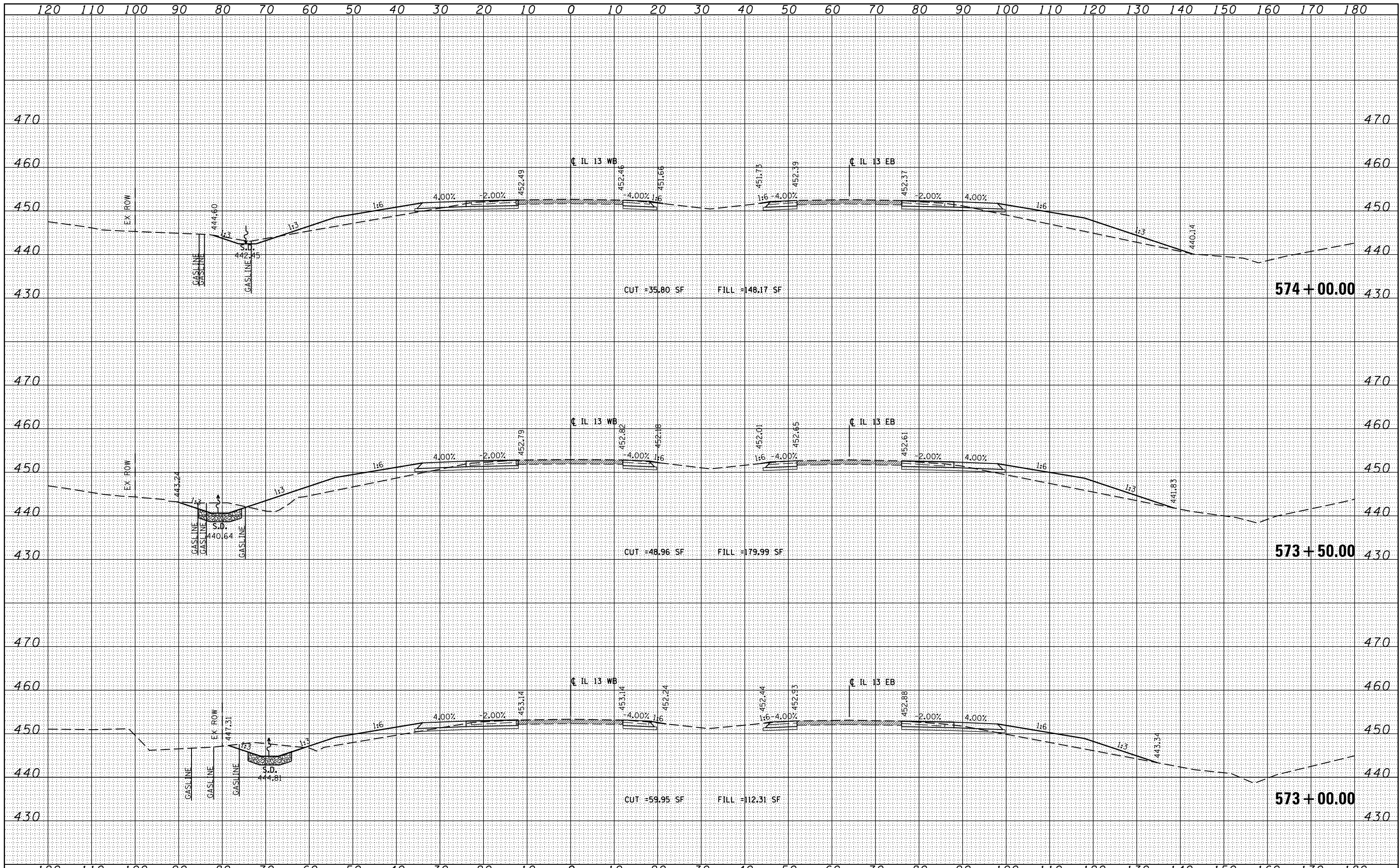


DATE	
BY	
FINAL SURVEY	SURVEYED
NO.	
PLOTTED	PLOTTED
TEMPLATE	TEMPLATE
NOTE BOOK	NOTE BOOK
AREAS CHECKED	AREAS CHECKED

DATE	
BY	
ORIGINAL SURVEY	SURVEYED
NO.	
PLOTTED	PLOTTED
TEMPLATE	TEMPLATE
NOTE BOOK	NOTE BOOK
AREAS CHECKED	AREAS CHECKED



FILE NAME =	USER NAME = #USERS	DESIGNED - KN	REVISED -	<b>STATE OF ILLINOIS</b> <b>DEPARTMENT OF TRANSPORTATION</b>	<b>PROPOSED CROSS SECTIONS</b> <b>ILLINOIS ROUTE 13</b>			F.A.P. RTE.	SECTION	COUNTY	TOTAL SHEETS	SHEET NO.
ct:\pw_work\pwidot\lavenderba\d0363618\0978221-ht-xssht-IL13.dgn		DRAWN - AS	REVISED -		331	(1-3)R-2, N-4, TS-4, HBK-1	WILLIAMSON	733	469			
	PLOT SCALE = 20,0000' / in.	CHECKED -	REVISED -		DRAWING NO. <b>XS-069</b>				78221			
	PLOT DATE = 1/31/2014	DATE -	REVISED -		SCALE: SHEET NO. 69 OF 84 SHEETS STA. 573+00.00 TO STA. 574+00.00		ILLINOIS FED. AID PROJECT					