

**SCHEDULE OF QUANTITIES**

RELOCATE  
TEMPORARY CONCRETE BARRIER

STATION TO	STATION	FEET
995+20	999+52	425

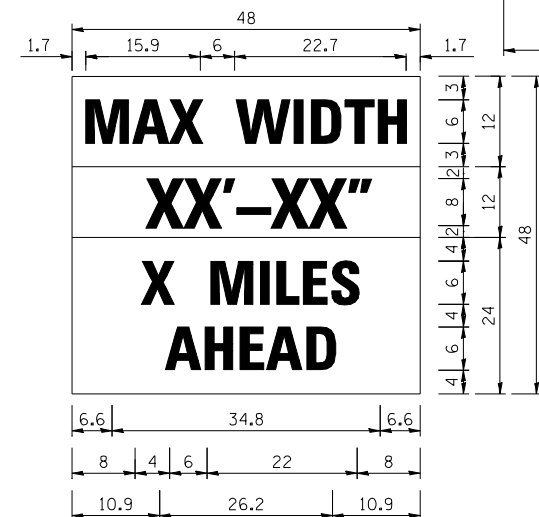
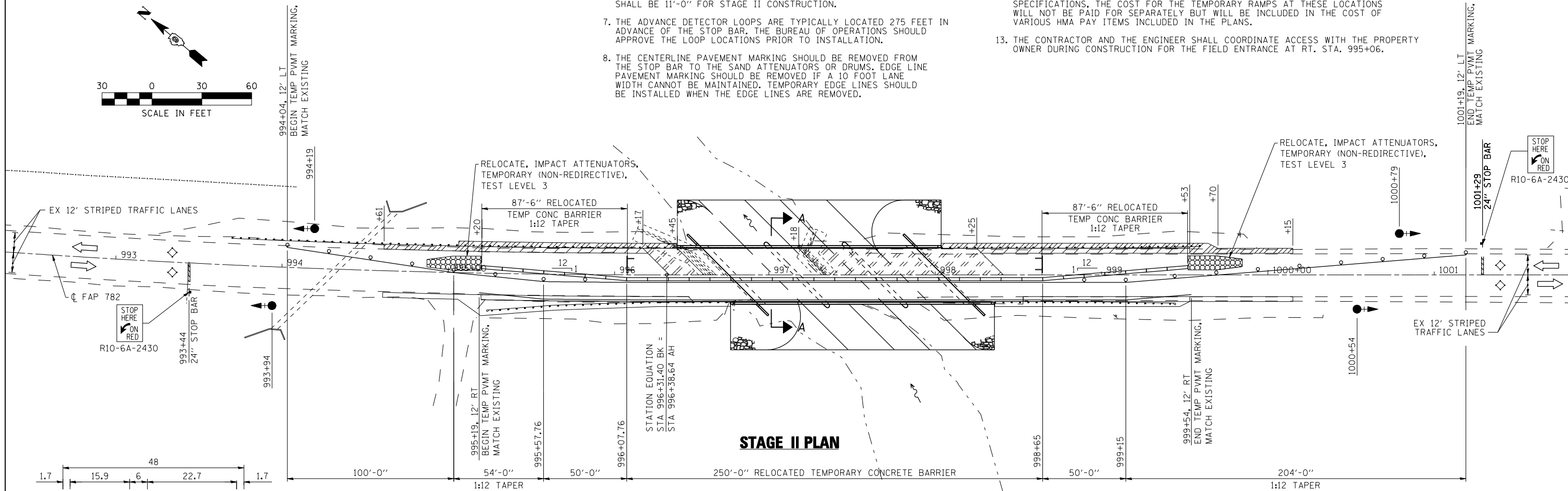
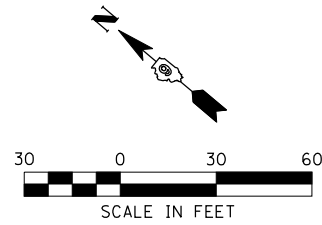
IMPACT ATTENUATORS, RELOCATE  
(NON-REDIRECTIVE), TEST LEVEL 3 - 2 EACH

**LEGEND**

- TRAFFIC SIGNAL WITH BACKPLATE, SIGNAL DIRECTION INDICATED
- ◇ DETECTOR LOOP
- DRUM WITH STEADY BURNING BI-DIRECTIONAL LIGHT
- ⊥ TYPE III BARRICADE
- ▨ BASE COURSE WIDENING, 10"
- ▩ PAVEMENT REMOVAL
- ▧ HMA SHOULDER, 8"
- ▤ IMPACT ATTENUATORS (TEMPORARY NON-REDIRECTIVE) TEST LEVEL 3

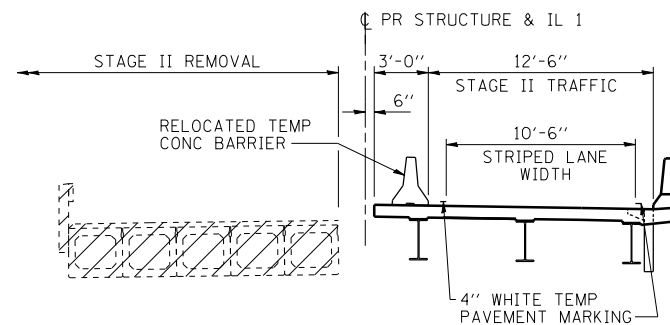
**GENERAL NOTES**

- TRAFFIC CONTROL SHALL BE ERECTED AS SHOWN AND ACCORDING TO TRAFFIC CONTROL AND PROTECTION, STANDARD 701321. SEE STANDARD 701321 FOR THE COMPLETION OF THE STAGE CONSTRUCTION TRAFFIC CONTROL THAT IS NOT SHOWN THAT INCLUDES, BUT IS NOT LIMITED TO, ADVANCE SIGNING, ADVANCE LOOP PLACEMENT, DRUMS WITH STEADY BURNING LIGHTS, DOUBLE VERTICAL PANELS AND BARRIER WALL/ GUARDRAIL MARKERS.
- SEE SPECIAL PROVISIONS FOR ADDITIONAL TRAFFIC CONTROL REQUIREMENTS.
- COORDINATE LOCATION OF SIGNALS WITH FINAL WORK AS DIRECTED BY THE ENGINEER.
- CONSTRUCT TEMPORARY RUMBLE STRIPS AT LOCATIONS SHOWN ON STANDARD 701321.
- ADVANCE WIDTH RESTRICTION WARNING SHALL BE INCLUDED IN THE COST OF STANDARD 701321.
- THE DIMENSION SHOWN ON THE WIDTH RESTRICTION SIGN (W12-1102(0)-48) SHOWN ON STANDARD 701321 AND ON THE ADVANCE WARNING SIGN (W12-1103) SHOWN ON THIS SHEET SHALL BE 11'-0" FOR STAGE II CONSTRUCTION.
- THE ADVANCE DETECTOR LOOPS ARE TYPICALLY LOCATED 275 FEET IN ADVANCE OF THE STOP BAR. THE BUREAU OF OPERATIONS SHOULD APPROVE THE LOOP LOCATIONS PRIOR TO INSTALLATION.
- THE CENTERLINE PAVEMENT MARKING SHOULD BE REMOVED FROM THE STOP BAR TO THE SAND ATTENUATORS OR DRUMS. EDGE LINE PAVEMENT MARKING SHOULD BE REMOVED IF A 10 FOOT LANE WIDTH CANNOT BE MAINTAINED. TEMPORARY EDGE LINES SHOULD BE INSTALLED WHEN THE EDGE LINES ARE REMOVED.
- VERTICAL PANELS SHOWN ON STANDARD 701321 WILL NOT BE REQUIRED ON THE STAGE II NEW BRIDGE PARAPET. THE BARRIER WALL REFLECTORS SHALL BE INSTALLED PRIOR TO OPENING TO TRAFFIC.
- ANY TIME THE CONCRETE BARRIER IS NOT IN THE PROPER POSITION, FLAGGERS SHALL BE IN PLACE TO CONTROL TRAFFIC AND THE TEMPORARY TRAFFIC SIGNALS SHALL BE TURNED OFF OR COVERED.
- THE TEMPORARY SIGNALS WILL REMAIN IN OPERATION AND THE TEMPORARY BARRIERS WILL REMAIN IN PLACE UNTIL THE BRIDGE SUPERSTRUCTURE IS COMPLETE INCLUDING PARAPETS AND APPROACH PAVEMENT. THE REMAINING HMA RESURFACING, HMA SHOULDERS, GUARDRAIL, AND TRAFFIC BARRIER TERMINALS SHALL BE COMPLETED USING THE APPROPRIATE STANDARDS INCLUDED IN THE PLANS AND TRAFFIC SHALL BE OPEN TO BOTH LANES DURING NON-WORKING HOURS. THE CONTRACTOR SHALL SCHEDULE THEIR OPERATIONS SO THERE IS NO MORE THAN TWO WEEKS BETWEEN THE REMOVAL OF THE TEMPORARY BARRIERS AND THE START OF GUARDRAIL AND TERMINAL INSTALLATION.
- THE CONTRACTOR'S OPERATION MAY RESULT IN A DROP-OFF AT THE END OF THE BRIDGE APPROACH PAVEMENT THAT IS UNDER TRAFFIC PRIOR TO THE HMA RESURFACING. TEMPORARY RAMPS SHALL BE PROVIDED AT THESE LOCATIONS IF NEEDED ACCORDING TO ARTICLE 406.08 OF THE STANDARD SPECIFICATIONS. THE COST FOR THE TEMPORARY RAMPS AT THESE LOCATIONS WILL NOT BE PAID FOR SEPARATELY BUT WILL BE INCLUDED IN THE COST OF VARIOUS HMA PAY ITEMS INCLUDED IN THE PLANS.
- THE CONTRACTOR AND THE ENGINEER SHALL COORDINATE ACCESS WITH THE PROPERTY OWNER DURING CONSTRUCTION FOR THE FIELD ENTRANCE AT RT. STA. 995+06.

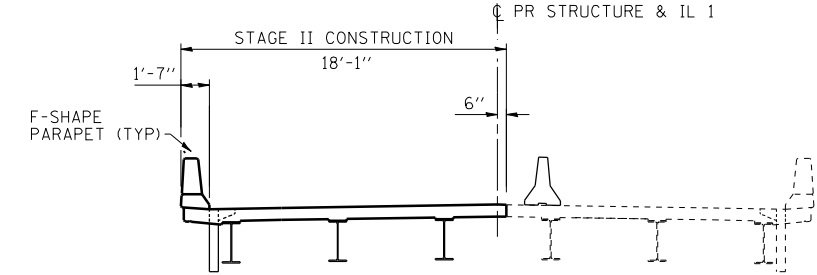


**W12-1103**

W12-1103 (Width is 8D);  
No border, Black on White;  
"MAX WIDTH" D;  
No border, Black on Orange;  
"XX'-XX'" D;  
No border, Black on White;  
"X MILES" D; "AHEAD" D



**SECTION A-A  
REMOVAL**



**SECTION A-A  
CONSTRUCTION**

NOTE: THIS SIGN SHALL BE LOCATED AS DIRECTED BY THE ENGINEER. ONE SIGN SHALL BE PROVIDED FOR EACH APPROACH TO THE SITE.

PRINT DRIVER: LUD-ER-BAR-BAI  
SCALE: 1"=30'-0"  
DATE: 11/13/13



USER NAME = kah	DESIGNED - NHP	REVISED -
ESCA PROJECT NO. 1035.03	DRAWN - HAS	REVISED -
PLOT SCALE = 0.1667' / IN.	CHECKED - JMS	REVISED -
PLOT DATE = 1/22/2014 5:20:38 PM	DATE - 11/13	REVISED -

**STATE OF ILLINOIS  
DEPARTMENT OF TRANSPORTATION**

**STAGE CONSTRUCTION PLAN AND DETAILS  
STRUCTURE NO. 035-0017**

SCALE: 1"=30'-0" SHEET NO. 2 OF 2 SHEETS STA. 992+00 TO STA. 1001+00

F.A.P. RTE.	SECTION	COUNTY	TOTAL SHEETS	SHEET NO.
782	115B-1	HARDIN	70	18
CONTRACT NO. 78263				
FED. ROAD DIST. NO. ILLINOIS FED. AID PROJECT				