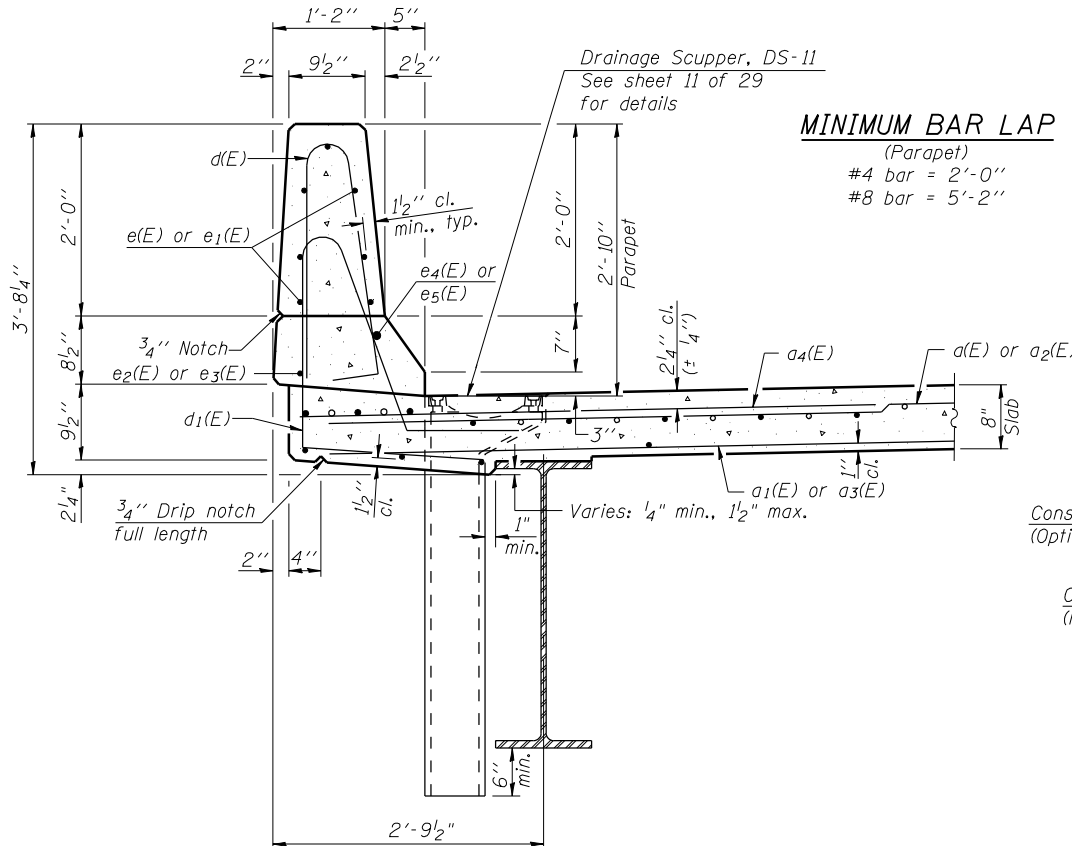
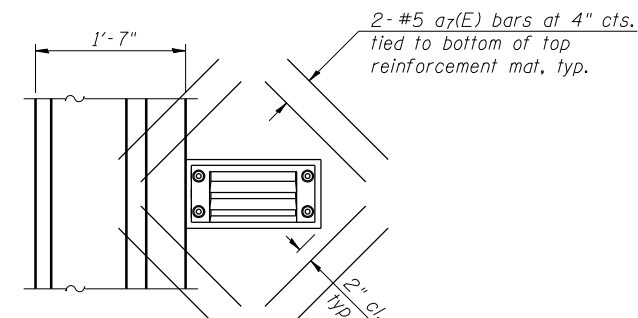


INSIDE ELEVATION OF PARAPET

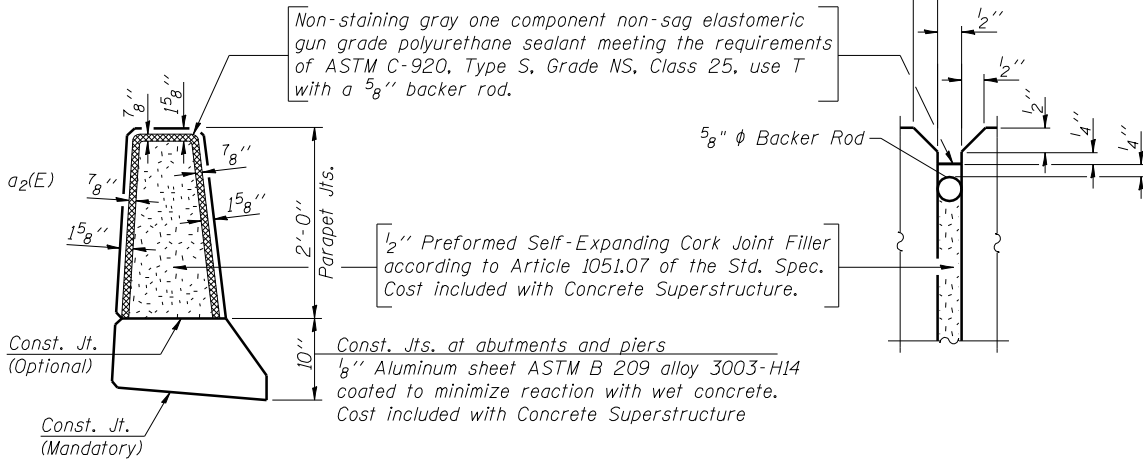


SECTION THRU PARAPET

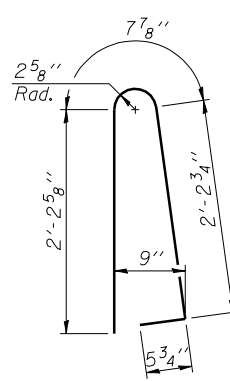


PLAN AT DRAINAGE SCUPPER

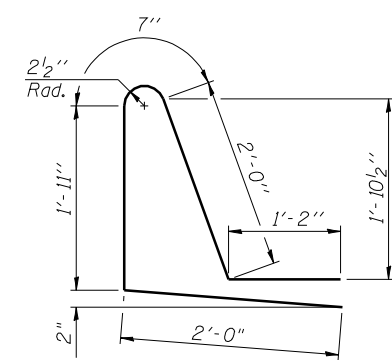
Note:
Cut longitudinal reinforcement to clear drainage scuppers.



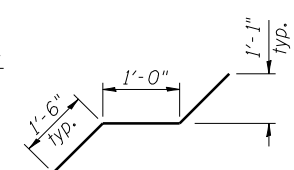
PARAPET JOINT DETAILS



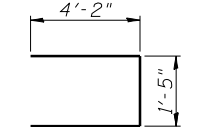
BAR d(E)



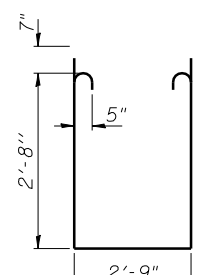
BAR d1(E)



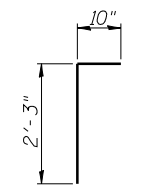
BAR m6(E)



BAR s(E)



BAR s1(E)



BAR v(E)

SUPERSTRUCTURE BILL OF MATERIAL

Bar	No.	Size	Length	Shape
a(E)	217	#5	17'-8"	—
a1(E)	151	#5	17'-1"	—
a2(E)	215	#5	16'-8"	—
a3(E)	151	#5	16'-1"	—
a4(E)	426	#6	6'-6"	—
a5(E)	4	#5	23'-9"	—
a6(E)	4	#5	25'-2"	—
a7(E)	48	#5	1'-6"	—
b(E)	190	#5	27'-9"	—
b1(E)	72	#6	26'-0"	—
b2(E)	124	#5	34'-0"	—
d(E)	282	#5	5'-7"	U
d1(E)	282	#5	7'-8"	U
e(E)	84	#4	13'-4"	—
e1(E)	42	#4	15'-5"	—
e2(E)	8	#4	21'-3"	—
e3(E)	4	#4	24'-5"	—
e4(E)	8	#8	22'-10"	—
e5(E)	4	#8	26'-0"	—
m(E)	6	#6	23'-8"	—
m1(E)	6	#6	25'-1"	—
m2(E)	8	#6	3'-5"	—
m3(E)	16	#6	7'-10"	—
m4(E)	4	#6	3'-3"	—
m5(E)	4	#6	4'-8"	—
m6(E)	24	#5	4'-0"	—
s(E)	74	#5	9'-9"	□
s1(E)	62	#5	9'-3"	□
v(E)	70	#5	3'-1"	Γ
Reinforcement Bars, Epoxy Coated			Pound	38520
Concrete Superstructure			Cu. Yds.	178.0

Bars indicated thus 1 x 2-#8 etc. indicates 1 line of bars with 2 lengths per line.

PRINT DRIVER = LUD-EB@PAUL
 SCALE NAME = PLOT
 FILE NAME = 035017-2825-08-01.dwg



USER NAME = kah	DESIGNED - SHL 07/13	REVISED -
ESCA PROJECT NO. 1035.03	CHECKED - RDP 09/13	REVISED -
PLOT SCALE = 0/2' = 1/4" = 1/8"	DRAWN - KAH/JPC 07/13	REVISED -
PLOT DATE = 1/22/2014 5:22:47 PM	CHECKED - SHL 08/13	REVISED -

**STATE OF ILLINOIS
DEPARTMENT OF TRANSPORTATION**

**SUPERSTRUCTURE DETAILS
STRUCTURE NO. 035-0017**

SHEET NO. 10 OF 29 SHEETS

F.A.P. RTE.	SECTION	COUNTY	TOTAL SHEETS	SHEET NO.
782	115B-1	HARDIN	70	33
CONTRACT NO. 78263			ILLINOIS FED. AID PROJECT	