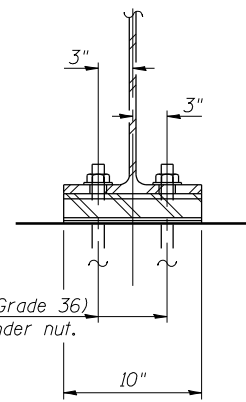
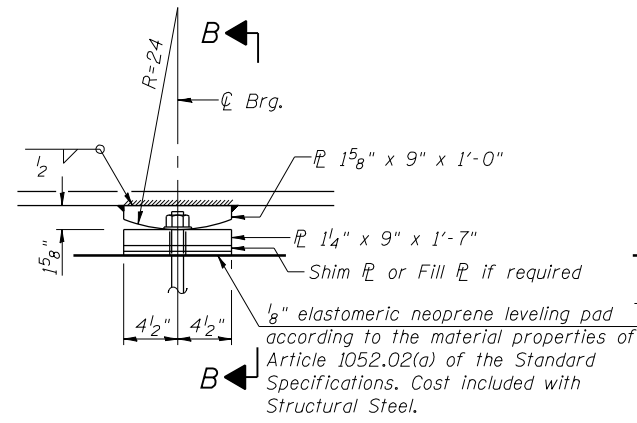


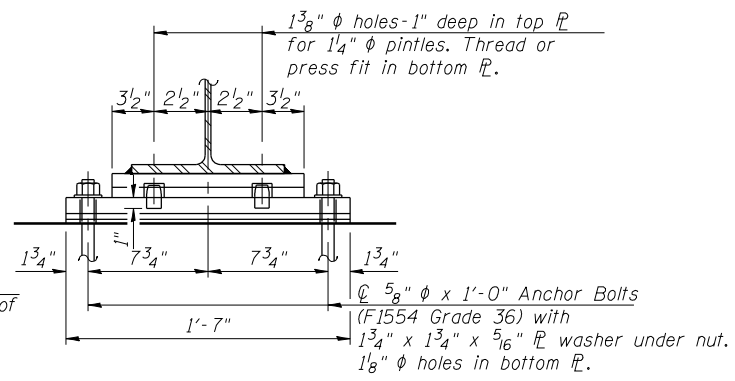
ELEVATION AT ABUTMENT



SECTION A-A



ELEVATION AT PIER



SECTION B-B

1/8" elastomeric neoprene leveling pad according to the material properties of Article 1052.02(a) of the Standard Specifications. Cost included with Structural Steel.

5/8" diameter x 12" Anchor Bolts (F1554 Grade 36) with 1 3/4" x 1 3/4" x 5/16" plate washer under nut. 1" x 2" slotted holes in flange. 1 1/8" diameter holes in bearing plate.

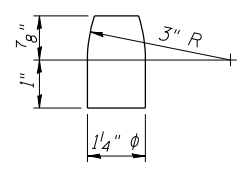
1/8" elastomeric neoprene leveling pad according to the material properties of Article 1052.02(a) of the Standard Specifications. Cost included with Structural Steel.

1 3/8" diameter holes-1" deep in top plate for 1/4" diameter pintles. Thread or press fit in bottom plate.

5/8" diameter x 1'-0" Anchor Bolts (F1554 Grade 36) with 1 3/4" x 1 3/4" x 5/16" plate washer under nut. 1 1/8" diameter holes in bottom plate.

FIXED BEARING

FIXED BEARING



PINTLE

BEARING FILL PLATES

Location	Beam	Thickness
North Abutment	Beam 3	5/8"
North Abutment	Beam 4	1/4"
Pier 1	Beam 3	3/4"
Pier 1	Beam 4	1/2"
Pier 2	Beam 3	7/8"
Pier 2	Beam 4	5/8"
South Abutment	Beam 3	1/8"

Notes:
 Anchor bolts shall be ASTM F1554 all-thread (or an Engineer-approved alternate material) of the grade(s) and diameter(s) specified. The corresponding specified grade of AASHTO M314 anchor bolts may be used in lieu of ASTM F1554.
 Anchor bolts at fixed bearings may be either cast in place or installed in holes drilled after the supported member is in place.
 Drilled and set anchor bolts shall be installed according to Article 521.06 of the Standard Specifications.
 Fill plates are required at the locations shown in the table on this sheet and shall be placed as shown on bearing details.
 Two 1/8 in. adjusting shims shall be provided for each bearing in addition to all other plates or shims and placed as shown on bearing details.
 The anchor bolt sizes and grades shown constitute a calculated seismic structural fuse. Substitution of higher diameter and/or grade anchor bolts will not be allowed.
 The structural steel plates of the Bearing Assembly shall conform to the requirements of AASHTO M270 Grade 50.

BILL OF MATERIAL

Item	Unit	Total
Anchor Bolts, 5/8"	Each	48

PRINT DRIVER = L:\05-ESCA\014
 PLOT DATE = 1/22/2014 5:23:34 PM
 FILE NAME = 035017-2825-17-8.dwg



USER NAME = kah	DESIGNED - SHL 08/13	REVISED -
ESCA PROJECT NO. 1035.03	CHECKED - RDP 09/13	REVISED -
PLOT SCALE = 0:2" = 1' / IN.	DRAWN - HAS 08/13	REVISED -
PLOT DATE = 1/22/2014 5:23:34 PM	CHECKED - SHL 08/13	REVISED -

**STATE OF ILLINOIS
 DEPARTMENT OF TRANSPORTATION**

**BEARING DETAILS
 STRUCTURE NO. 035-0017**

SHEET NO. 17 OF 29 SHEETS

F.A.P. RTE.	SECTION	COUNTY	TOTAL SHEETS	SHEET NO.
782	115B-1	HARDIN	70	40
ILLINOIS FED. AID PROJECT			CONTRACT NO. 78263	