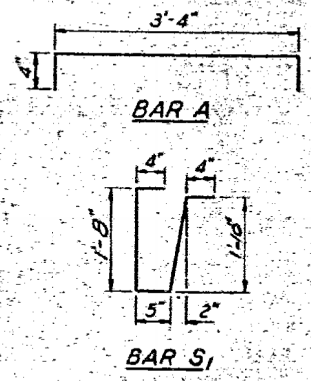
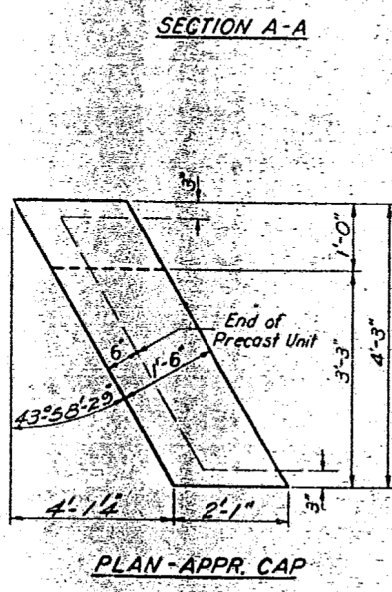
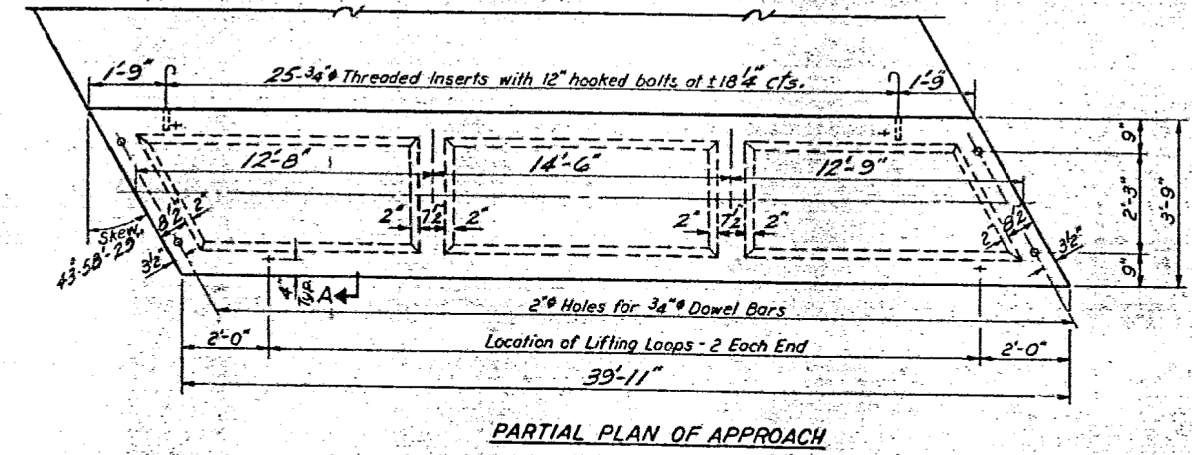
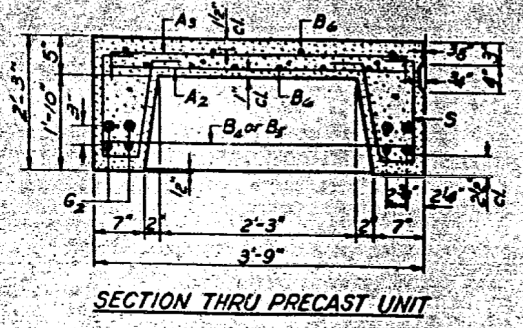
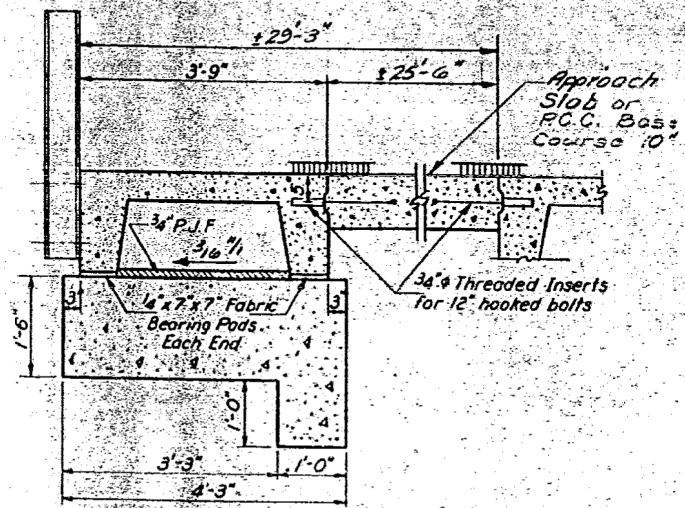
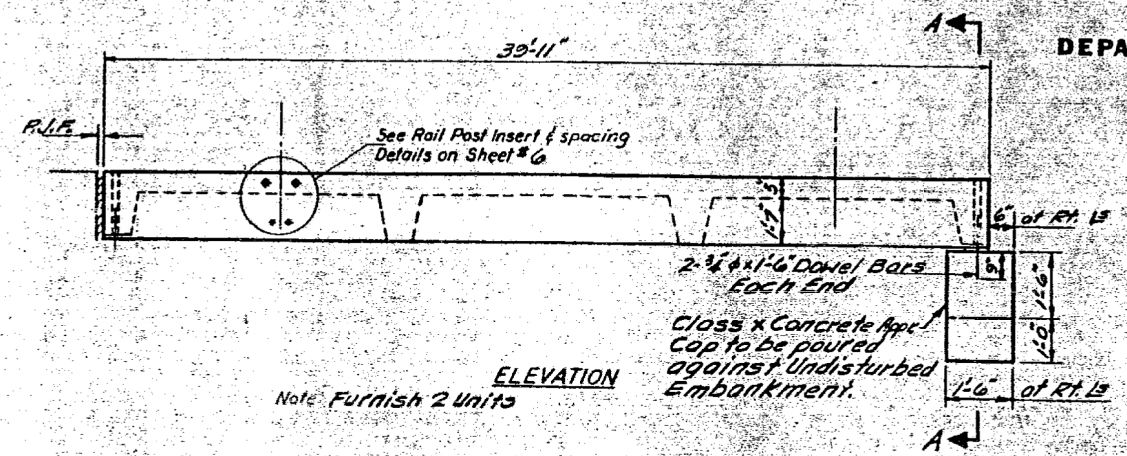


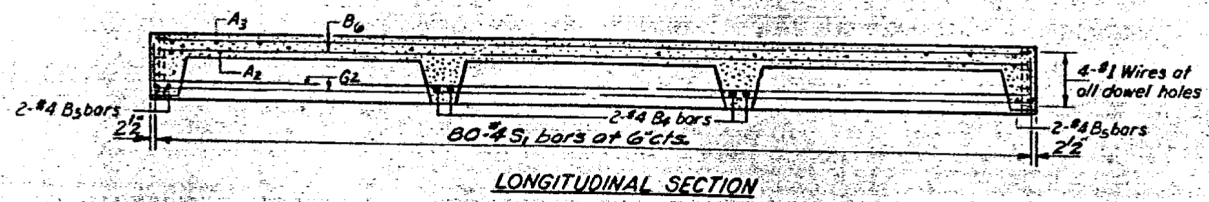
STATE OF ILLINOIS
DEPARTMENT OF TRANSPORTATION

PROJECT NO.	SECTION	COUNTY	SHEET NO.	TOTAL SHEETS
782	115B-1	HARDIN	22	17

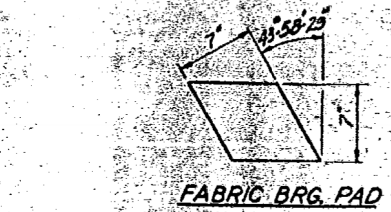
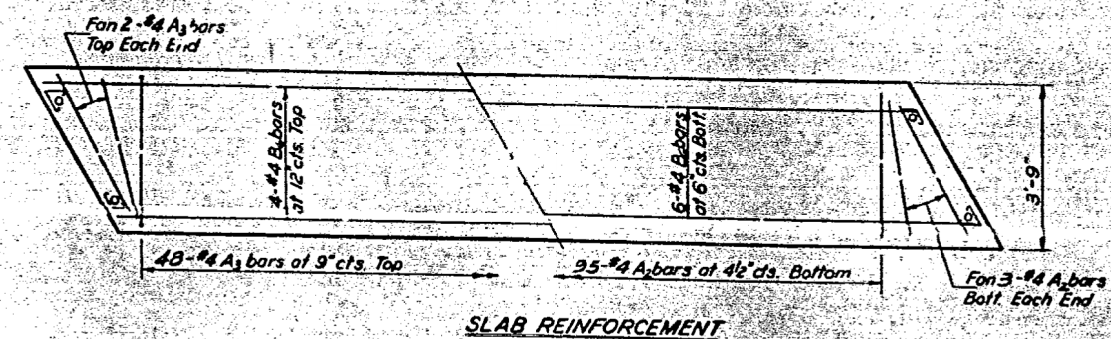


BAR LIST - ONE UNIT
Reinforcement to be cast into slab

Bar	No	Size	Length	Shape
A ₂	101	#4	3'-3"	—
A ₃	52	#4	4'-0"	—
B ₄	4	#4	3'-6"	—
B ₅	4	#4	4'-11"	—
B ₆	10	#4	39'-7"	—
G ₂	8	#11	39'-7"	—
S ₁	160	#4	4'-10"	U



NOTES
Unless otherwise approved by the Engineer, lifting loops shall be 1/2" 6x19 class wire rope with fiber core and shall have a minimum ultimate strength of 18,700 lbs. Loops shall be burned off after slab has been erected. Holes shall be drilled and anchor dowels grouted in place. Cost of reinforcement and accessories cast into the slab unit, bearing pads, furnishing, drilling for, placing and grouting anchor dowels and 3/4" hooked bolts is included in Unit bid price for "Precast Concrete Bridge Slab." The Precast Concrete Bridge Slab shall be erected and aligned with the exterior face of the exterior Deck Beam, after Deck Beams are in final position.

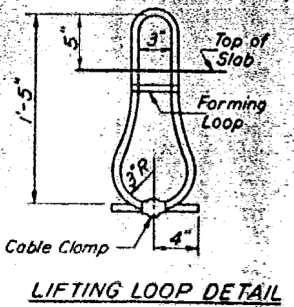


BILL OF MATERIAL

Item	Unit	Quantity
Precast Concrete Bridge Slab	Sq. Ft.	300
Class X Concrete	Cu. Yds.	1.1

DESIGNED JOHN A. MORRIS
CHECKED Paul S. Lewis
DRAWN Leona Heeren
CHECKED Paul S. Lewis

EXAMINED [Signature]
PASSED [Signature]
APPROVED [Signature]
DIRECTOR OF HIGHWAYS



STRESSES
f'c = 4,500 psi.
f'c = 1,800 psi.
f's = 20,000 psi.
n = 8
LOADING HS-20

APPROACH DETAILS
FA RT. 782, SEC. 115A-DRI
HARDIN COUNTY
STA. 996+97

AP-2 20' Precast Appr. Unit (Skewed R.F.) (15-15-71)

FOR INFORMATION ONLY



USER NAME = kah	DESIGNED - JMS	REVISED -
ESCA PROJECT NO. 1035.03	DRAWN - HAS	REVISED -
PLOT SCALE = 0.1667' / IN.	CHECKED - NHP	REVISED -
PLOT DATE = 1/22/2014 5:25:39 PM	DATE - 08/13	REVISED -

STATE OF ILLINOIS
DEPARTMENT OF TRANSPORTATION

EXISTING STRUCTURE PLANS - FOR INFORMATION ONLY
STRUCTURE NO. 035-0002

SCALE: SHEET NO. 4 OF 10 SHEETS STA. TO STA.

F.A.P. RTE.	SECTION	COUNTY	TOTAL SHEETS	SHEET NO.
782	115B-1	HARDIN	70	56
FED. ROAD DIST. NO.	ILLINOIS FED. AID PROJECT	CONTRACT NO. 78263		