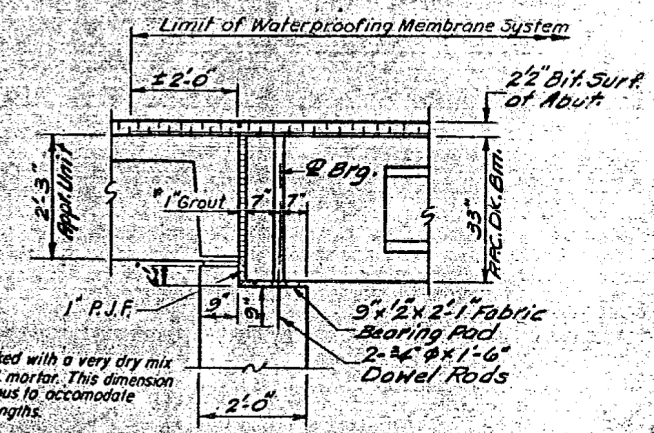
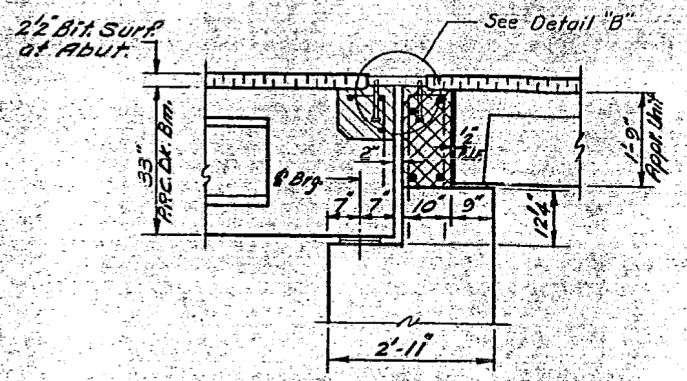


STATE OF ILLINOIS
DEPARTMENT OF TRANSPORTATION

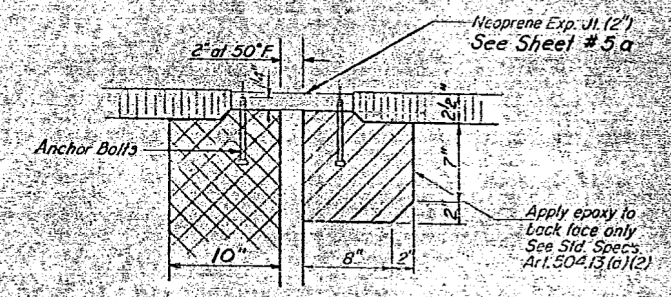
PROJECT NO.	SECTION	COUNTY	TOTAL SHEETS	SHEET NO.
782	DR-1	HARDIN	22	18
SHEET NO. 5 8 SHEETS				



**SECTION THRU WEST ABUT.
AT NORTH OUTSIDE BEAM**

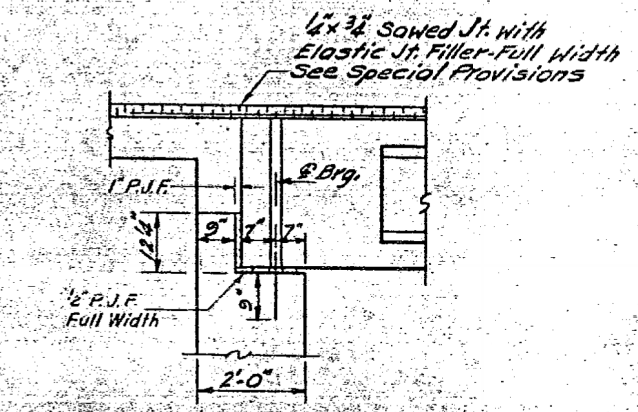


**SECTION THRU EAST ABUT.
AT NORTH OUTSIDE BEAM**

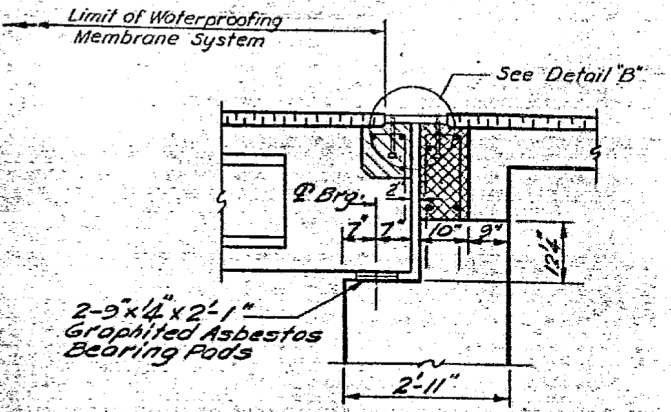


DETAIL "B"

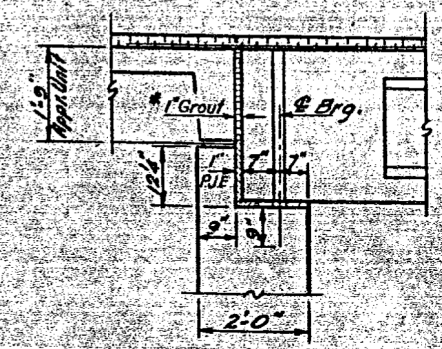
NOTE: Dimensions are at right angles.
Hatched areas to be poured after beams have been erected and joints grouted.
Ends of beams shall be aligned at the expansion joints. Any lined variation in the beam lengths shall be placed at the fixed joint.
See End of Beam Detail for reinforcement on sheet #2.



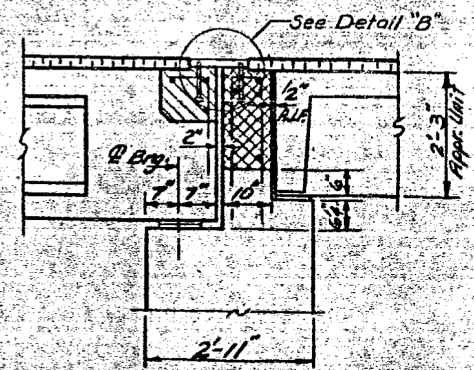
**SECTION THRU WEST ABUT.
AT 2 RDWY.**



**SECTION THRU EAST ABUT.
AT 2 RDWY.**



**SECTION THRU WEST ABUT.
AT SOUTH OUTSIDE BEAM**



**SECTION THRU EAST ABUT.
AT SOUTH OUTSIDE BEAM**

Note: All Dimensions on Sections thru Abutments are at Right Angles to Abutment.

NOTE: Hatched Area quantities are billed on Superstructure sheet #2.
Cross Hatched Area quantities are billed on Abutment sheet #8.

DESIGNED JOHN A. MORRIS P.E.	EXAMINED [Signature] DEC 10 1991
CHECKED Prakash S. W.	PASSED
DRAWN Leona Heeren	APPROVED
CHECKED Prakash S. W.	DIRECTOR OF HIGHWAYS

SUPERSTRUCTURE
FR. RT. 782 SEC. 115A-DR-1
HARDIN COUNTY
STA. 996+97

FOR INFORMATION ONLY

EXISTING STRUCTURE PLANS - FOR INFORMATION ONLY
STRUCTURE NO. 035-0002

F.A.P. RTE.	SECTION	COUNTY	TOTAL SHEETS	SHEET NO.
782	115B-1	HARDIN	70	57
CONTRACT NO. 78263				
FED. ROAD DIST. NO. ILLINOIS FED. AID PROJECT				



USER NAME = kah	DESIGNED - JMS	REVISED -
ESCA PROJECT NO. 1035.03	DRAWN - HAS	REVISED -
PLOT SCALE = 0.1667' / IN.	CHECKED - NHP	REVISED -
PLOT DATE = 1/22/2014	DATE - 08/13	REVISED -

STATE OF ILLINOIS
DEPARTMENT OF TRANSPORTATION

SCALE: SHEET NO. 5 OF 10 SHEETS STA. TO STA.