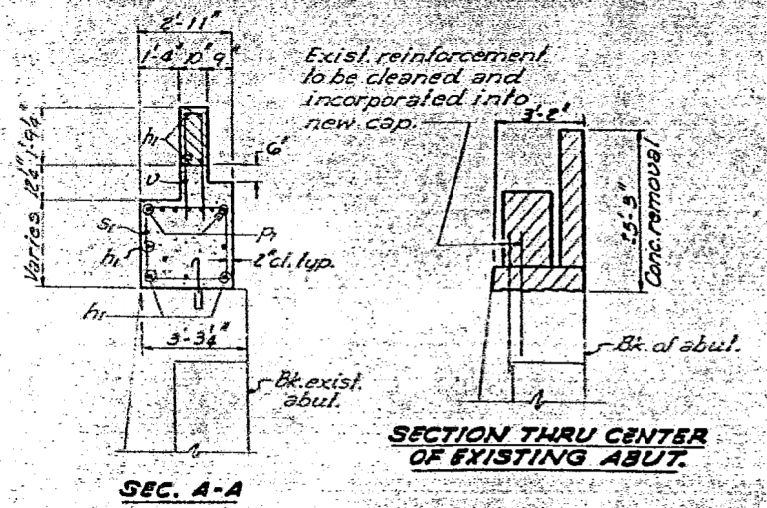
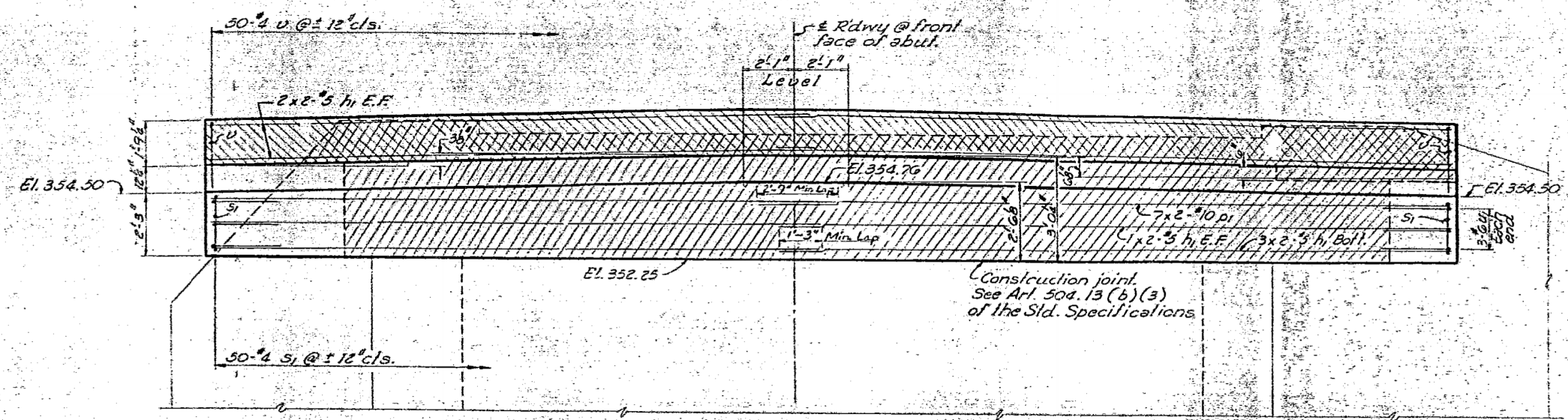


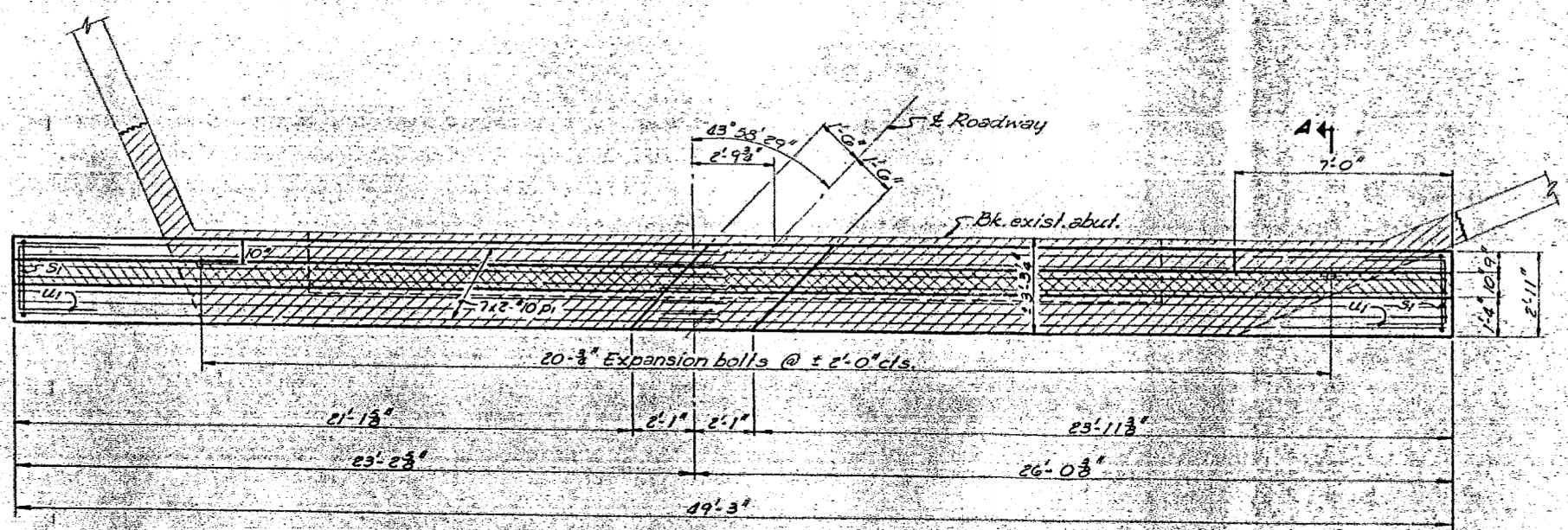
Note - Bars indicated thus 3 x 2" 10 etc. designates 3 lines of bars with 2 lengths per line.

STATE OF ILLINOIS
DEPARTMENT OF TRANSPORTATION

PROJECT NO.	SECTION	COUNTY	STATION	SHEET NO.
782	115A DR-1	HARDIN	22	8
8 SHEETS				



ELEVATION



PLAN

BILL OF MATERIAL

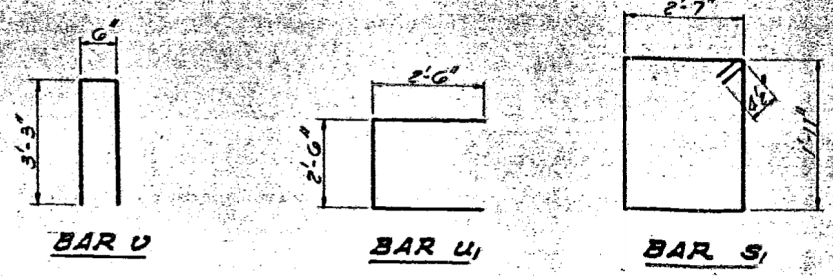
Bar No.	Size	Length	Shape
h ₁	10	9'5"	25'3"
pl	18	9'10"	25'9"
S ₁	50	9'8"	9'9"
u ₁	6	9'6"	7'6"
v	50	9'8"	7'0"
Class X Concrete		Cu yds	18.2
Reinforcement Bars		Lbs	2440
Concrete Removal		Cu yds	18.3
Expansion Bolts		Each	20

SYMBOLS

Hatched area indicating portion of conc. removal.

Hatched area indicating portion of conc. to be poured after beams are in place.

Notes - Expansion bolts shall be anchored into sound concrete. All edges shall have standard 3/8" chamfers, except as noted.



DESIGNED JOHN A. MOORE	EXAMINED	1971
CHECKED Pankrat S. W.	PASSED	
DRAWN J. Mullerix	APPROVED	
CHECKED Pankrat S. W.	DIRECTOR OF HIGHWAYS	

FOR INFORMATION ONLY

EAST ABUTMENT
R.R. 182 SEC. 115A-DR-1
HARDIN COUNTY
STATION 996+97



USER NAME = kah	DESIGNED - JMS	REVISED -
ESCA PROJECT NO. 1035.03	DRAWN - HAS	REVISED -
PLOT SCALE = 0.1667" / IN.	CHECKED - NHP	REVISED -
PLOT DATE = 1/22/2014 5:26:11 PM	DATE - 08/13	REVISED -

STATE OF ILLINOIS
DEPARTMENT OF TRANSPORTATION

EXISTING STRUCTURE PLANS - FOR INFORMATION ONLY
STRUCTURE NO. 035-0002

SCALE: SHEET NO. 9 OF 10 SHEETS STA. TO STA.

F.A.P. RTE.	SECTION	COUNTY	TOTAL SHEETS	SHEET NO.
782	115B-1	HARDIN	70	61
CONTRACT NO. 78263				
FED. ROAD DIST. NO. ILLINOIS FED. AID PROJECT				