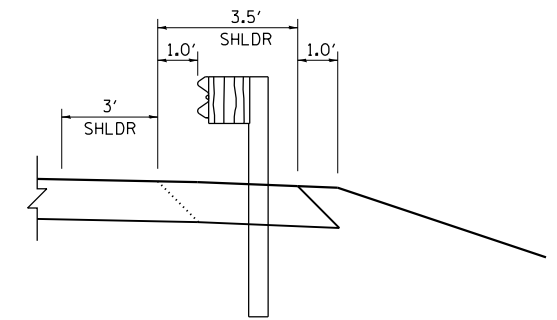
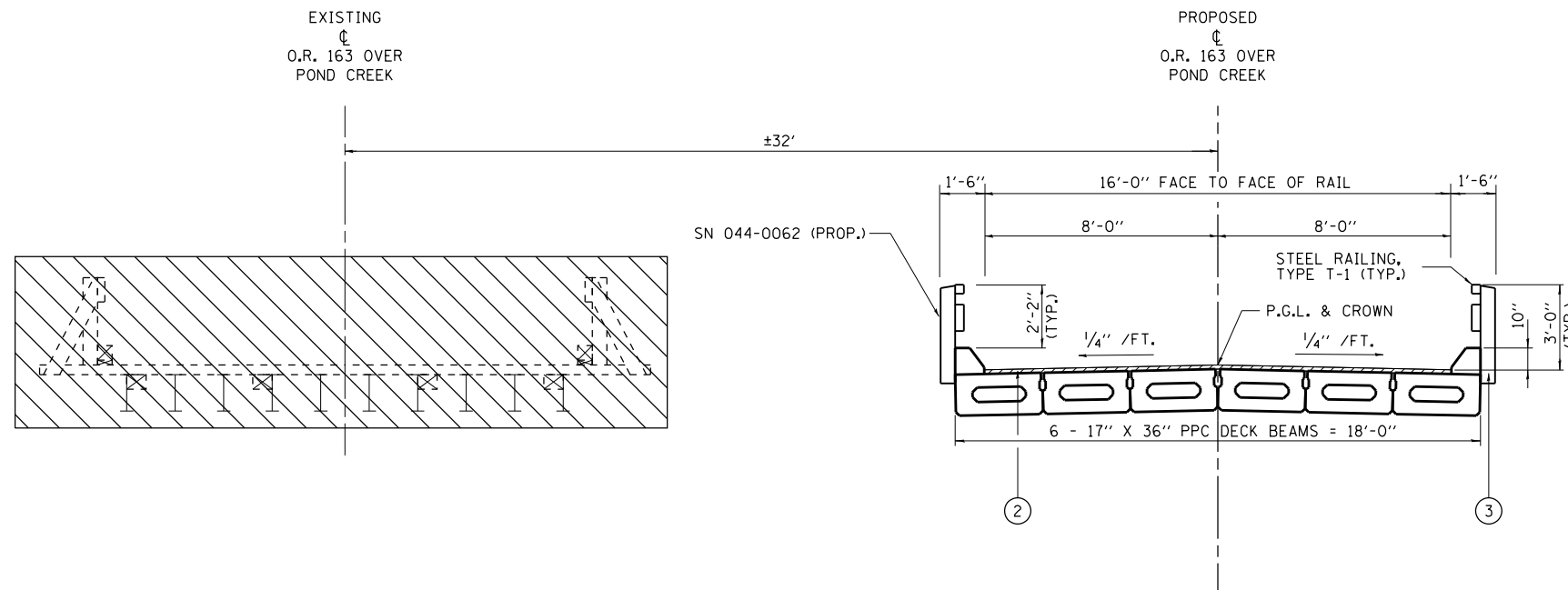


PROPOSED TYPICAL ROADWAY APPROACH SECTION
(LOOKING SOUTH)

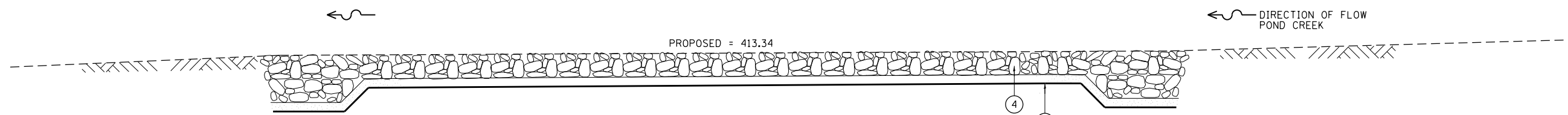


PROPOSED TYPICAL GUARDRAIL SECTION
STA. 50+32.54 TO 51+51.62
RT. AND LT.



PROPOSED TYPICAL SECTION AT STRUCTURE
(LOOKING SOUTH)

- LEGEND**
- ① PROPOSED AGGREGATE SURFACE COURSE, TYPE B 12"
 - ② PROPOSED HOT-MIX ASPHALT SURFACE COURSE, MIX "C", N50
 - ③ PROPOSED STEEL RAILING TYPE T-1
 - ④ PROPOSED STONE RIPRAP, CLASS A4 WITH FILTER FABRIC
 - ⑤ FILTER FABRIC FOR RIPRAP
 - ⑥ SEEDING, CLASS 2
 - ⑦ MULCH, METHOD 2



← DIRECTION OF FLOW
POND CREEK

FILE NAME =	USER NAME = Brian Bond	DESIGNED - BMB	REVISED -	STATE OF ILLINOIS DEPARTMENT OF TRANSPORTATION	SN 044-0062 (PROP.) PROPOSED TYPICAL SECTIONS - O.R. 163 OVER POND CREEK	O.R.	SECTION	COUNTY	TOTAL SHEETS	SHEET NO.	
L:\IDOT\0806610\W0_12\Draw\Sheets\0978267-sht-typical-2.dgn	DRAWN - BMB	REVISED -	163			34B-2	JOHNSON	37	6		
Default	PLOT SCALE = 6.0000' / in.	CHECKED - JMM	REVISED -			CONTRACT NO. 78267					
	PLOT DATE = 12/10/2013	DATE - DECEMBER 2013	REVISED -			SCALE:	SHEET	OF	SHEETS	STA.	TO STA.

ILLINOIS FED. AID PROJECT