

PROP. ϕ O.R. 163
 CURVE-1 DATA
 PI STA. = 51+84.02
 $\Delta = 46^\circ 15' 15''$ (RT)
 $D = 63^\circ 39' 43''$
 $R = 90.00'$
 $T = 38.44'$
 $L = 72.66'$
 $E = 7.86'$
 P.C. STA = 51+45.58
 P.T. STA = 52+18.24

PROP. ϕ O.R. 163
 CURVE-2 DATA
 PI STA. = 52+65.35
 $\Delta = 54^\circ 45' 57''$ (LT)
 $D = 81^\circ 51' 04''$
 $R = 70.00'$
 $T = 36.26'$
 $L = 66.91'$
 $E = 8.83'$
 P.C. STA = 52+29.09
 P.T. STA = 52+96.00

GUARDRAIL REMOVAL, 31 L.F.
 REMOVE SIGN PANEL ASSEMBLY TYPE A
 RELOCATE SIGN PANEL ASSEMBLY TYPE A
 RELOCATE EXISTING MAILBOX, 1 EA.
 TO STA. 50+22.53, 13.78' LT.

ϕ U.S. RTE 45 STA. 829+00.98
 ϕ O.R. 163 STA. 50+00.00

BEGIN IMPROVEMENTS
 STA. 50+14.86
 SEE DETAIL A
 THIS SHEET

EXISTING UTILITY TO BE RELOCATED
 BY OTHERS

EXIST. R.O.W.

U.S. RTE 45

POND CREEK

EXIST. R.O.W.

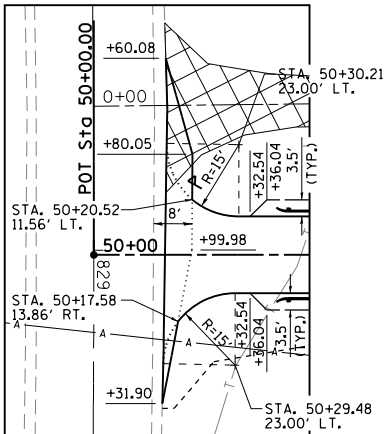
PROPOSED STRUCTURE
 S.N. 044-0062
 STA. 50+91.81, ϕ

END IMPROVEMENTS
 STA. 52+40.00

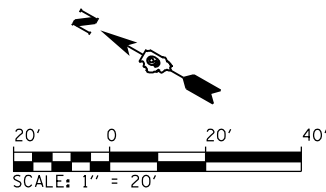
TRANSITION AGGREGATE SURFACE COURSE
 TO MATCH EXISTING (TYP.)

EXISTING GRAVEL DRIVE TO BE REMOVED
 (COST INCLUDED IN EARTH EXCAVATION)

PROPOSED ϕ O.R. 163
 OVER POND CREEK

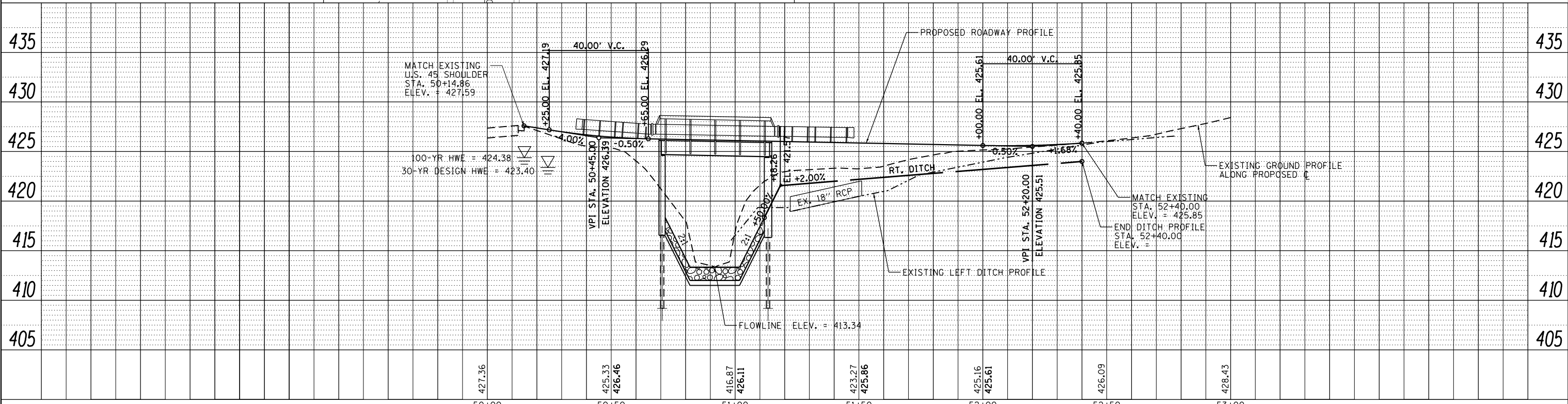


DETAIL A



PLAN	SURVEYED	DATE
	PLOTTED	
	NOTE BOOK	
	ALIGNED	
	CHECKED	
	FILE NAME	
	NO.	

PROFILE	SURVEYED	DATE
	PLOTTED	
	GRADES CHECKED	
	STRUCTURE	
	NOTATIONS CHECKED	
	NO.	



FILE NAME =	USER NAME = Brian Bond	DESIGNED - BMB	REVISED -	O.R.	SECTION	COUNTY	TOTAL SHEETS	SHEET NO.
L:\1001\0806610\W0_12\Draw\Sheets\0978267-shr-plnpr.f.dgn		DRAWN - BMB	REVISED -	163	34B-2	JOHNSON	37	8
Default	PLOT SCALE = 40.0000' / in.	CHECKED - JMM	REVISED -	CONTRACT NO. 78267				
	PLOT DATE = 12/11/2013	DATE - DECEMBER 2013	REVISED -	ILLINOIS FED. AID PROJECT				

STATE OF ILLINOIS
 DEPARTMENT OF TRANSPORTATION

SN 044-0062 (PROP.)
 PLAN AND PROFILE - O.R. 163 OVER POND CREEK

SCALE: SHEET 1 OF 1 SHEETS STA. 50+00 TO STA. 53+46.15