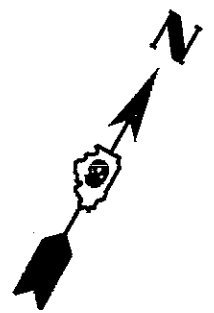
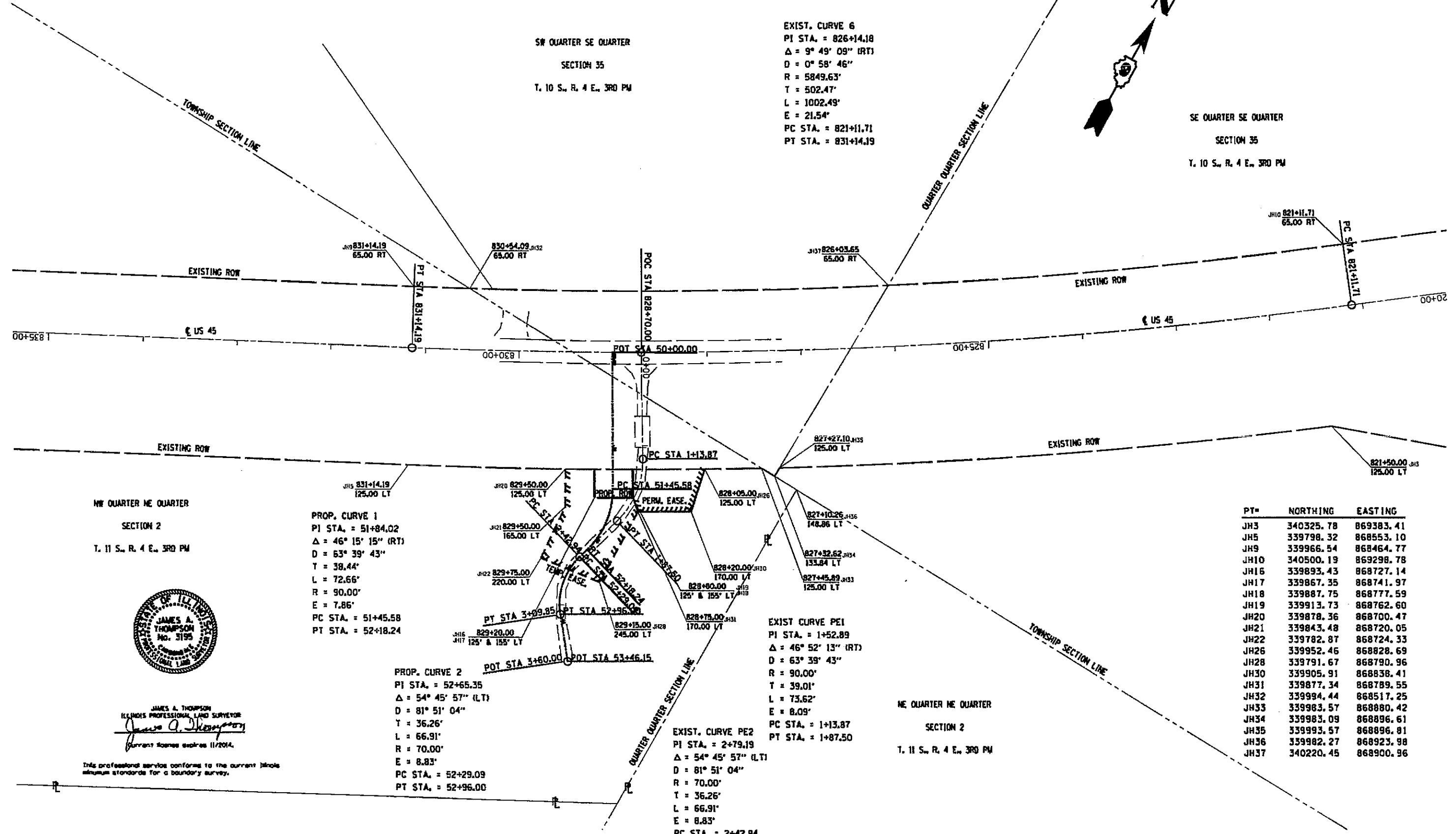


PARCEL	PROPERTY OWNER	PURPOSE	ACREAGE
161	GREG DUNNING	ROW/TE/PE	0.028/0.158/0.071



NW QUARTER NE QUARTER
SECTION 2
T. 11 S., R. 4 E., 3RD PM

PROP. CURVE 1
PI STA. = 51+84.02
Δ = 46° 15' 15" (RT)
D = 63° 39' 43"
T = 38.44'
L = 72.66'
R = 90.00'
E = 7.86'
PC STA. = 51+45.58
PT STA. = 52+18.24

PROP. CURVE 2
PI STA. = 52+65.35
Δ = 54° 45' 57" (LT)
D = 81° 51' 04"
T = 36.26'
L = 66.91'
R = 70.00'
E = 8.83'
PC STA. = 52+29.09
PT STA. = 52+96.00

EXIST. CURVE PE2
PI STA. = 2+79.19
Δ = 54° 45' 57" (LT)
D = 81° 51' 04"
R = 70.00'
T = 36.26'
L = 66.91'
E = 8.83'
PC STA. = 2+42.94
PT STA. = 3+09.85

EXIST. CURVE PE1
PI STA. = 1+52.89
Δ = 46° 52' 13" (RT)
D = 63° 39' 43"
R = 90.00'
T = 39.01'
L = 73.62'
E = 8.09'
PC STA. = 1+13.87
PT STA. = 1+87.50

PT=	NORTHING	EASTING
JH3	340325.78	869383.41
JH5	339798.32	868553.10
JH9	339966.54	868464.77
JH10	340500.19	869298.78
JH16	339893.43	868727.14
JH17	339867.35	868741.97
JH18	339887.75	868777.59
JH19	339913.73	868762.60
JH20	339878.36	868700.47
JH21	339843.48	868720.05
JH22	339782.87	868724.33
JH26	339952.46	868828.69
JH28	339791.67	868790.96
JH30	339905.91	868838.41
JH31	339877.34	868789.55
JH32	339994.44	868517.25
JH33	339983.57	868880.42
JH34	339983.09	868896.61
JH35	339993.57	868896.81
JH36	339982.27	868923.98
JH37	340220.45	868900.96



JAMES A. THOMPSON
ILLINOIS PROFESSIONAL LAND SURVEYOR
No. 3193
Current license expires 11/2014.

This professional services conforms to the current Illinois minimum standards for a boundary survey.

FILE NAME *	USER NAME * #USER#	DESIGNED -	REVISED -	STATE OF ILLINOIS DEPARTMENT OF TRANSPORTATION	R-99-014-12 RIGHT OF WAY PLANS	F.A. RTE.	SECTION	COUNTY	TOTAL SHEETS	SHEET NO.	
#FILE#		DRAWN -	REVISED -			US 45	348-2	JOHNSON	37	13	
#MODELNAME*		CHECKED -	REVISED -			SCALE: 1" = 100'	SHEET 1 OF 1 SHEETS	STA. 821+50.00 TO STA. 830+00.00	CONTRACT NO. 12267		
		DATE -	REVISED -			ILLINOIS FED. AID PROJECT					