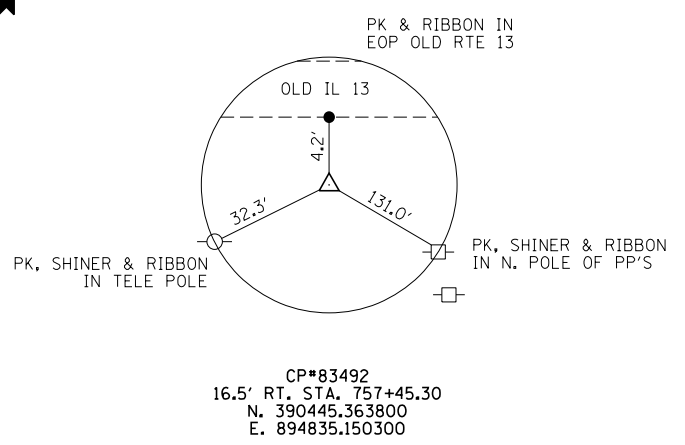
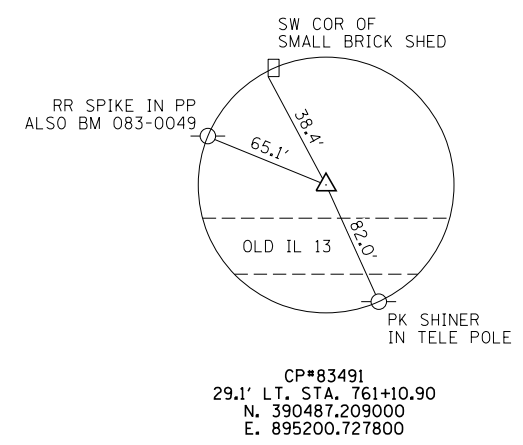


FAS 899 (OLD IL 13) CENTERLINE				
DESCRIPTION	STATION	OFFSET	NORTHING	EASTING
POT	745+00.00	0	390461.1108	893589.8390
POT	771+23.6972	0	390462.7536	896213.5357

CONTROL POINTS				
POINT NUMBER	STATION	OFFSET	NORTHING	EASTING
CP# 83491	761+10.9	29.1' LT	390487.209000	895200.727800
CP# 83492	757+45.30	16.5' RT	390445.363800	894835.150300

BENCHMARK
 BM#083-0049
 RR SPIKE IN POWER POLE
 32' LT. STA. 760+47
 ELEV. 393.44



FILE NAME = D978268-sht-ties.dgn	USER NAME = *USER*	DESIGNED - L.F.S.	REVISED -
HAMPTON, LENZINI AND RENWICK, INC. 3035 STEVENSON DRIVE, SUITE 201 SPRINGFIELD, ILLINOIS 62703 ILLINOIS PROFESSIONAL DESIGN FIRM LS / PE / SE CORP. 184.000959	PLOT SCALE = *SCALE*	DRAWN - T.W.K.	REVISED -
PLOT DATE = 1/23/2014	DATE - 01/14/14	CHECKED - J.W.F.	REVISED -

**STATE OF ILLINOIS
 DEPARTMENT OF TRANSPORTATION**

ALIGNMENT TIES & BENCHMARKS OLD IL 13			
SCALE:	SHEET NO.	OF SHEETS	STA. TO STA.

F.A.S.	SECTION	COUNTY	TOTAL SHEETS	SHEET NO.
899	8B-1	SALINE	33	10
CONTRACT NO. 78268				
ILLINOIS FED. AID PROJECT				