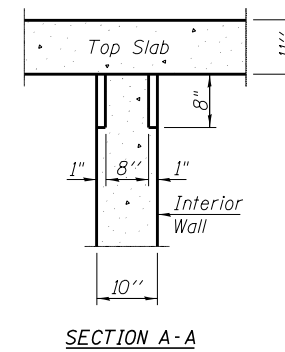
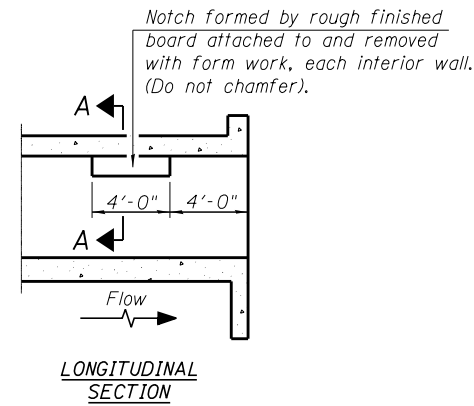


GENERAL NOTES

Reinforcement bars designated (E) shall be epoxy coated.
 Precast alternate is not allowed at this location.
 Layout of slope protection system may be varied to suit ground conditions in the field as directed by the Engineer.
 Excavation behind existing abutment walls shall be performed to balance front and back soil pressure before removing the existing superstructure.
 Protective coat shall be applied to the top and exposed inside face of the headwalls per Section 503.19 of the Standard Specifications.



PHOEBE NESTING
SITE DETAILS
 (Downstream End Only)

TOTAL BILL OF MATERIAL

ITEM	UNIT	TOTAL
Removal of Existing Structures	Each	1
Concrete Box Culverts	Cu. Yd.	135.7
Reinforcement Bars, Epoxy Coated	Pound	31,470
Name Plates	Each	1
Rockfill-Foundation	Ton	90
Removal and Disposal of Unsuitable Material	Cu. Yd.	48
Stone Riprap, Class A5	Sq. Yd.	74
Filter Fabric	Sq. Yd.	74
Steel Railing, Type 2399	Foot	46
Protective Coat	Sq. Yd.	11

FILE NAME = 083-018-1401.dwg
 CB PROJECT NO. 083-018-24

Coombes-Bloxdorf P.C.
 - CIVIL ENGINEERS -
 - STRUCTURAL ENGINEERS -
 - LAND SURVEYORS -
 Design Firm License No. 184-002703

USER NAME = *USER*	DESIGNED - CME	REVISED -
	CHECKED - MCB	REVISED -
PLOT SCALE = *SCALE*	DRAWN - MML	REVISED -
PLOT DATE = 1/23/2014	CHECKED - MCB	REVISED -

STATE OF ILLINOIS
DEPARTMENT OF TRANSPORTATION

GENERAL DATA
STRUCTURE NO. 083-2022

SHEET NO. 2 OF 6 SHEETS

F.A.S. RTE.	SECTION	COUNTY	TOTAL SHEETS	SHEET NO.
899	8B-1	SALINE	33	19
CONTRACT NO. 78268				
ILLINOIS FED. AID PROJECT				