

F.A.S. RTE.	SECTION	COUNTY	TOTAL SHEETS	SHEET NO.
899	8B-1	SALINE	33	1
FED. ROAD DIST. NO.	ILLINOIS	CONTRACT NO. 78268		

**INDEX OF SHEETS**

SHEET NO.	DESCRIPTION
1.	COVER SHEET
2.	GENERAL NOTES AND HIGHWAY STANDARDS
3.-6.	SUMMARY OF QUANTITIES
7.-8.	TYPICAL SECTIONS
9.	SCHEDULES OF QUANTITIES
10.	ALIGNMENT TIES & BENCHMARKS
11.	PLAN AND PROFILE
12.	EROSION CONTROL PLAN
13.	RIGHT OF WAY SHEET
14.	PAVEMENT MARKING PLAN
15.	PAVED SHOULDER LAYOUT
16.	GUARDRAIL LAYOUT
17.	STANDARD DETAILS DISTRICT 9
18.-22.	STRUCTURE PLANS
23.	SOIL BORINGS
24.-33.	CROSS SECTIONS

**UTILITIES**

PROSPECT WATER DISTRICT (WATER)  
 3395 HARCO ROAD  
 HARRISBURG, IL 62946  
 ATTN: RICK BASHAM

CLEARWAVE COMMUNICATIONS (FIBER OPTIC)  
 P.O. BOX 808  
 HARRISBURG, IL 62946  
 ATTN: AARON CARIAN

ATMOS ENERGY (LIBERTY UTILITIES) GAS  
 1-866-322-8667  
 11 NORTHEASTERN BOULEVARD  
 SALEM NH 03079

**STATE OF ILLINOIS**  
**DEPARTMENT OF TRANSPORTATION**  
**DIVISION OF HIGHWAYS**

**PROPOSED**  
**HIGHWAY PLANS**

**F.A.S. ROUTE 899 (OLD IL 13)**  
**SECTION 8B-1**  
**PROJECT ACRS-0899 (005)**  
**STRUCTURE REPLACEMENT**  
**OLD IL 13 OVER UNNAMED STREAM**  
**SALINE COUNTY**  
**C-99-056-11**



LOCATION OF SECTION INDICATED THIS: - [shaded box]

**TRAFFIC DATA**

FUNCTIONAL CLASSIFICATION:	MAJOR COLLECTOR (NON URBAN)
DESIGN SPEED:	55 MPH
POSTED SPEED:	55 MPH
ADT:	400 (2014) 540 (2034)
PV:	97.33%
TRUCKS:	2.67%

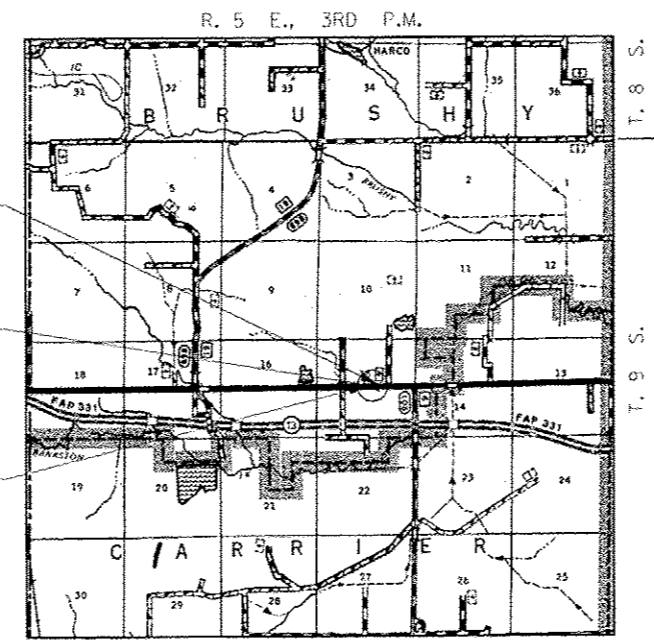
STATE OF ILLINOIS  
 DEPARTMENT OF TRANSPORTATION  
 DIVISION OF HIGHWAYS

SUBMITTED Jan 30 20 14

Jeffrey S. Keern  
 DEPUTY DIRECTOR OF HIGHWAYS, REGION ENGINEER

March 21 20 14  
John D. Baranzelli, PE, P.E.  
 ENGINEER OF DESIGN AND ENVIRONMENT

March 21 20 14  
Omer Osman, PE, P.E.  
 DIRECTOR OF HIGHWAYS, CHIEF ENGINEER



IMPROVEMENT ENDS  
 STATION 759+30.00

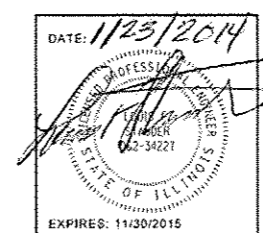
STA. 759+00  
 DOUBLE 10'x10' REINFORCED CONCRETE  
 BOX CULVERT  
 LENGTH = 35.54'; SKEW = 10°  
 EXISTING STRUCTURE NO. 083-0049  
 PROPOSED STRUCTURE NO. 083-2022

IMPROVEMENT BEGINS  
 STATION 758+70.00

**LOCATION MAP**

APPROXIMATE SCALE: 0 1 MILE

NET LENGTH OF PROJECT = 60 FEET = 0.011 MILES  
 GROSS LENGTH OF PROJECT = 60 FEET = 0.011 MILES



**PRINTED BY THE AUTHORITY**  
**OF THE STATE OF ILLINOIS**

PROJECT ENGINEER: DAVID PICHE (618) 351-5227

**BRUSHY TOWNSHIP**

J.U.L.I.E.  
 JOINT UTILITY LOCATION INFORMATION FOR EXCAVATION  
 1-800-892-0123  
 OR 811

**CONTRACT NO. 78268**

**HAMPTON, LENZINI AND RENWICK, INC.**  
 CIVIL ENGINEERS - STRUCTURAL ENGINEERS - LAND SURVEYORS  
 3085 STEVENSON DRIVE, SUITE 201  
 SPRINGFIELD, ILLINOIS 62703  
 217.546.3400 www.hlrengineering.com