

F.A.S. RTE.	SECTION	COUNTY	TOTAL SHEETS	SHEET NO.
899	8B-1	SALINE	33	1
FED. ROAD DIST. NO.	ILLINOIS	CONTRACT NO. 78268		

INDEX OF SHEETS 04-25-14 LETTING ITEM 081

SHEET NO.	DESCRIPTION
1.	COVER SHEET
2.	GENERAL NOTES AND HIGHWAY STANDARDS
3.-6.	SUMMARY OF QUANTITIES
7.-8.	TYPICAL SECTIONS
9.	SCHEDULES OF QUANTITIES
10.	ALIGNMENT TIES & BENCHMARKS
11.	PLAN AND PROFILE
12.	EROSION CONTROL PLAN
13.	RIGHT OF WAY SHEET
14.	PAVEMENT MARKING PLAN
15.	PAVED SHOULDER LAYOUT
16.	GUARDRAIL LAYOUT
17.	STANDARD DETAILS DISTRICT 9
18.-22.	STRUCTURE PLANS
23.	SOIL BORINGS
24.-33.	CROSS SECTIONS

STATE OF ILLINOIS
DEPARTMENT OF TRANSPORTATION
DIVISION OF HIGHWAYS

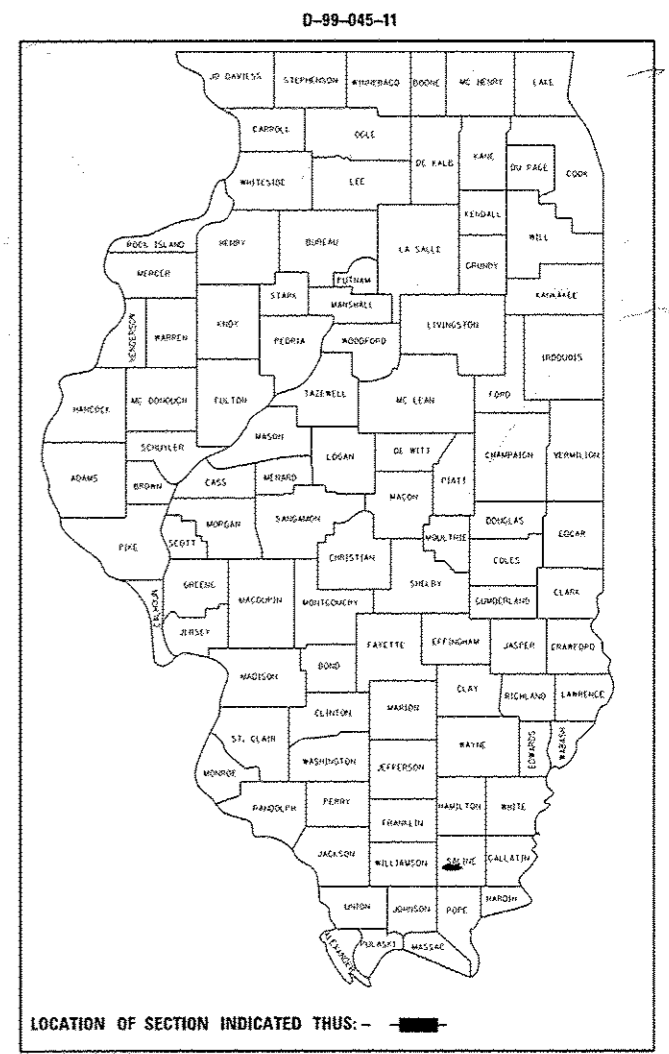
**PROPOSED
HIGHWAY PLANS**

F.A.S. ROUTE 899 (OLD IL 13)
SECTION 8B-1
PROJECT ACRS-0899 (005)
STRUCTURE REPLACEMENT
OLD IL 13 OVER UNNAMED STREAM
SALINE COUNTY
C-99-056-11

UTILITIES
PROSPECT WATER DISTRICT (WATER)
3395 HARCO ROAD
HARRISBURG, IL 62946
ATTN: RICK BASHAM

CLEARWAVE COMMUNICATIONS (FIBER OPTIC)
P.O. BOX 808
HARRISBURG, IL 62946
ATTN: AARON CARIAN

ATMOS ENERGY (LIBERTY UTILITIES) GAS
1-866-322-8667
11 NORTHEASTERN BOULEVARD
SALEM NH 03079



TRAFFIC DATA

FUNCTIONAL CLASSIFICATION:	MAJOR COLLECTOR (NON URBAN)
DESIGN SPEED:	55 MPH
POSTED SPEED:	55 MPH
ADT:	400 (2014) 540 (2034)
PV:	97.33%
TRUCKS:	2.67%

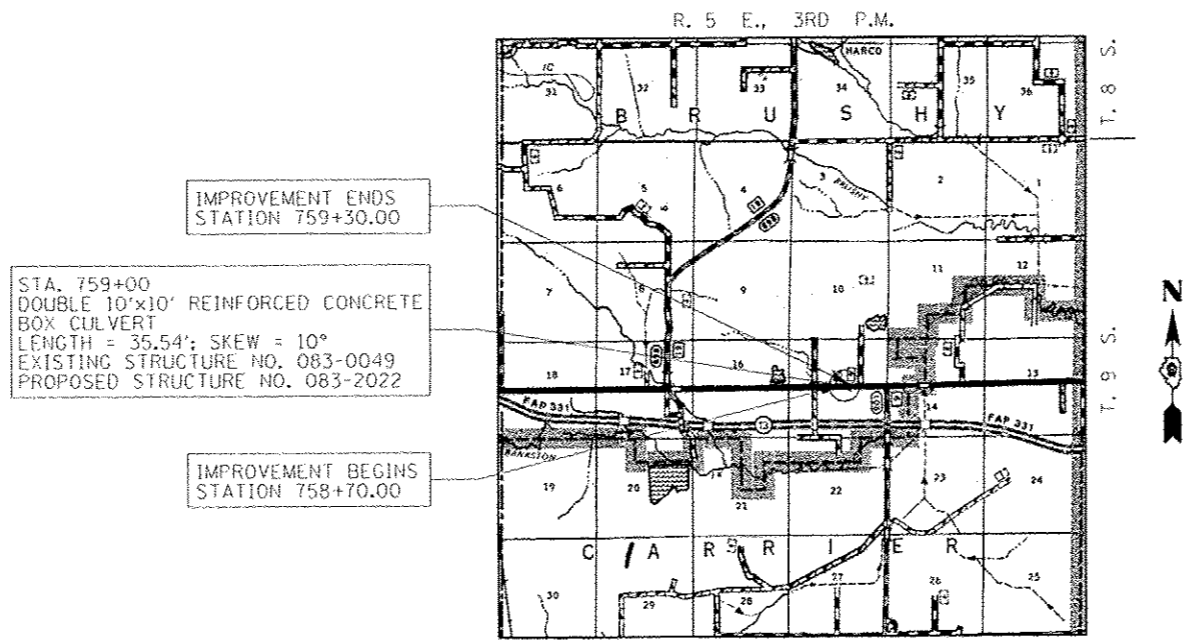
STATE OF ILLINOIS
DEPARTMENT OF TRANSPORTATION
DIVISION OF HIGHWAYS

SUBMITTED Jan 30 20 14

Jeffrey S. Keern
DEPUTY DIRECTOR OF HIGHWAYS, REGION ENGINEER

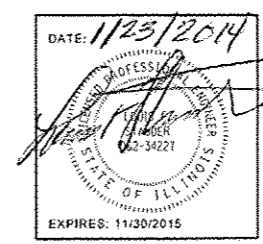
March 21 20 14
John D. Baranzelli, PE, P.E.
ENGINEER OF DESIGN AND ENVIRONMENT

March 21 20 14
Omer Osman, PE, P.E.
DIRECTOR OF HIGHWAYS, CHIEF ENGINEER



LOCATION MAP

APPROXIMATE SCALE: 0 1 MILE
NET LENGTH OF PROJECT = 60 FEET = 0.011 MILES
GROSS LENGTH OF PROJECT = 60 FEET = 0.011 MILES



**PRINTED BY THE AUTHORITY
OF THE STATE OF ILLINOIS**

PROJECT ENGINEER: DAVID PICHE (618) 351-5227

BRUSHY TOWNSHIP

J.U.L.I.E.
JOINT UTILITY LOCATION INFORMATION FOR EXCAVATION
1-800-892-0123
OR 811

CONTRACT NO. 78268

HAMPTON, LENZINI AND RENWICK, INC.
CIVIL ENGINEERS - STRUCTURAL ENGINEERS - LAND SURVEYORS
3085 STEVENSON DRIVE, SUITE 201
SPRINGFIELD, ILLINOIS 62703
217.546.3400 www.hlrengineering.com

GENERAL NOTES

- 1 IT SHALL BE THE CONTRACTOR'S RESPONSIBILITY TO VERIFY ALL EXISTING FIELD DIMENSIONS AND CONDITIONS PRIOR TO CONSTRUCTION AND ORDERING MATERIALS.
- 2 WHERE SECTION OR SUBSECTION MONUMENTS ARE ENCOUNTERED, THE ENGINEER SHALL BE NOTIFIED BEFORE SUCH MONUMENTS ARE REMOVED. THE CONTRACTOR SHALL PROTECT AND CAREFULLY PRESERVE ALL MONUMENTS UNTIL AN AUTHORIZED SURVEYOR OR AGENT HAS WITNESSED OR OTHERWISE REFERENCED THEIR LOCATION. THE CONTRACTOR SHALL BE RESPONSIBLE FOR HAVING AN AUTHORIZED SURVEYOR REESTABLISH ANY SECTION OR SUBSECTION MONUMENTS DESTROYED BY HIS OPERATIONS.
- 3 ANY REFERENCE TO A STANDARD IN THESE PLANS SHALL BE INTERPRETED TO MEAN THE EDITION AS INDICATED BY THE SUBNUMBER LISTED ON THE INDEX OF SHEETS OR THE COPY OF THE STANDARD INCLUDED IN THE PLANS.
- 4 PLAN DIMENSIONS AND DETAILS RELATIVE TO THE EXISTING STRUCTURE HAVE BEEN TAKEN FROM EXISTING PLANS AND ARE SUBJECT TO NORMAL CONSTRUCTION VARIATIONS. IT SHALL BE THE CONTRACTOR'S RESPONSIBILITY TO VERIFY SUCH DIMENSIONS AND DETAILS IN THE FIELD AND MAKE NECESSARY APPROVED ADJUSTMENTS PRIOR TO CONSTRUCTION OR ORDERING OF MATERIALS. SUCH VARIATIONS SHALL NOT BE A CAUSE FOR ADDITIONAL COMPENSATION FOR A CHANGE IN THE SCOPE OF WORK. THE CONTRACTOR, HOWEVER, WILL BE PAID FOR THE ACTUAL QUANTITY FURNISHED AT THE UNIT PRICE FOR THE WORK. CONSTRUCTION PLANS ARE AVAILABLE FOR REVIEW AT THE DISTRICT 9 OFFICE.
- 5 THE THICKNESS OF HOT MIX ASPHALT MIXTURE SHOWN ON THE PLANS IS THE NOMINAL THICKNESS. DEVIATIONS FROM THE NOMINAL THICKNESS WILL BE PERMITTED WHEN SUCH DEVIATIONS OCCUR DUE TO IRREGULARITIES IN THE EXISTING SURFACE OR BASE ON WHICH THE HOT MIX ASPHALT MIXTURE IS PLACED.
- 6 ALL OBSTRUCTIONS WHICH ARE WITHIN THE CLEAR ZONE SHOWN ON THE TYPICAL SECTION AND ARE NOT SHIELDED BY THE PROPOSED GUARDRAIL SHALL BE REMOVED BETWEEN STATION 757+00 AND STATION 761+00. TYPICAL OBSTRUCTIONS ARE HEADWALLS, FOUNDATIONS, ETC. WHICH PROJECT 100 mm (4 IN.) OR MORE ABOVE THE GROUND LINE; AND TREES WHICH WILL MATURE TO A DIAMETER OF 100 mm (4 IN.) OR GREATER.
- 7 IF SO DIRECTED BY THE ENGINEER, DITCHES ADJACENT TO EMBANKMENTS SHALL BE CONSTRUCTED PRIOR TO STARTING THE CONSTRUCTION OF THE EMBANKMENT FILL.

HIGHWAY STANDARDS

- 000001-06 STANDARD SYMBOLS, ABBREVIATIONS, AND PATTERNS
- 001001-02 AREAS OF REINFORCEMENT BARS
- 001006 DECIMAL OF AN INCH AND OF A FOOT
- 280001-07 TEMPORARY EROSION CONTROL SYSTEMS
- 420001-07 PAVEMENT JOINTS
- 420101-04 24' (7.2 m) JOINTED PCC PAVEMENT
- 482006-03 HMA SHOULDERS ADJACENT TO RIGID PAVEMENT
- 630001-10 STEEL PLATE BEAM GUARDRAIL
- 630201-06 PCC/HMA STABILIZATION AT STEEL PLATE BEAM GUARDRAIL
- 630301-06 SHOULDER WIDENING FOR TYPE 1, (SPECIAL) GUARDRAIL TERMINALS
- 631032-08 TRAFFIC BARRIER TERMINAL, TYPE 6A
- 635006-03 REFLECTOR AND TERMINAL MARKER PLACEMENT
- 635011-02 REFLECTOR MARKER AND MOUNTING DETAILS
- 666001-01 RIGHT -OF-WAY MARKERS
- 701901-03 TRAFFIC CONTROL DEVICES
- 780001-04 TYPICAL PAVEMENT MARKINGS
- 781001-03 TYPICAL APPLICATIONS RAISED REFLECTIVE PAVEMENT MARKERS
- BLR 21-9 TYPICAL APPLICATION OF TRAFFIC CONTROL DEVICES FOR CONSTRUCTION ON RURAL LOCAL HIGHWAYS

GENERAL NOTES

- 8 FACTORS USED FOR ESTIMATING PLAN QUANTITIES ARE AS FOLLOWS AND SHALL NOT BE USED FOR THE BASIS OF FINAL QUANTITIES:

ALL HOT MIX ASPHALT - 2.016 TONS/CU.YD. (112 LBS/SQ.YD./INCH OF THICKNESS)
ALL AGGREGATE 2.05 TONS/CU.YD.
BITUMINOUS MATERIALS:
ON PAVEMENT - 0.1 GAL./SQ.YD.
INTERMEDIATE LIFTS (FOG COAT) - 0.04 GAL./SQ.YD.
ON AGGREGATE SURFACE - 0.32 GAL./SQ.YD.
AGGREGATE (PRIME COAT) - 0.002 TONS/SQ.YD.
RIPRAP - 1.5 TONS/CU.YD.
- 9 TREES SHALL BE PRESERVED THROUGHOUT THIS SECTION AS SHOWN ON THE PLANS AND AS DIRECTED BY THE ENGINEER. GENERALLY, TREES OUTSIDE THE CLEAR ZONE, AND WHICH DO NOT INTERFERE WITH CONSTRUCTION, SHALL NOT BE DISTURBED.
- 10 EARTHWORK COMPACTION SHALL BE TO THE SATISFACTION OF THE ENGINEER.
- 11 AT ALL LOCATIONS WHERE THE PROPOSED HOT MIX ASPHALT OR CONCRETE PAVEMENT JOINS AN EXISTING HOT MIX ASPHALT OR CONCRETE PAVEMENT, A FULL DEPTH SAWED JOINT SHALL BE CONSTRUCTED. THE COST OF THIS JOINT WILL BE INCLUDED IN THE COST OF THE TYPE OF PAVEMENT BEING CONSTRUCTED.
- 12 THE MINIMUM VERTICAL CLEARANCE FOR PERMANENT SIGNS PLACED ON BACKSLOPES SHALL BE 0.914 m (3 FT.) MEASURED FROM A POINT DIRECTLY BENEATH THE FAR EDGE OF THE SIGN.
- 13 THE LIMITS OF ROCK AND EARTH SLOPES SHOWN IN THE CROSS SECTIONS ARE APPROXIMATE. THE ACTUAL SLOPE USED SHALL BE DETERMINED BY THE MATERIAL CLASSIFICATION AS DEFINED IN ARTICLE 202.04, AND AS DIRECTED BY THE ENGINEER.
- 14 PRIOR TO PLACEMENT OF THE FINAL PAVEMENT MARKINGS THE RESIDENT ENGINEER SHOULD CONTACT THE BUREAU OF OPERATIONS AND ARRANGE FOR INSPECTION AND APPROVAL OF THE PAVEMENT MARKING LAYOUT.
- 15 ALL TEMPORARY EROSION CONTROL MEASURES SHALL BE LEFT IN PLACE UNTIL REMOVAL IS REQUIRED TO CONSTRUCT FINAL GRADE LINES.
16. COMMITMENTS: REFER TO THE 404 PERMIT IN THE SPECIAL PROVISIONS FOR COMMITMENTS FOR TREE CLEARING AND FEDERALLY LISTED SPECIES.

HMA MIXTURE REQUIREMENTS	
LOCATION(S):	OLD IL 13 SHOULDERS
MIXTURE USE(S):	HOT-MIX ASPHALT SHOULDERS, 8"
AC/PG:	PG 58-22
RAP % (MAX):	SEE SPECIAL PROVISIONS
DESIGN AIR VOIDS:	2% @ Ndes 30
MIXTURE COMPOSITION: (GRADATION MIXTURE):	HMA SHOULDERS
FRICTION AGGREGATE:	NONE
MIXTURE WEIGHTS:	112 LBS / SQ. YD. 1 INCH THICKNESS

STATE OF ILLINOIS
DEPARTMENT OF TRANSPORTATION

PREPARED BY: Joe Danfiewicz
DISTRICT STUDIES & PLANS ENGINEER

EXAMINED BY: [Signature]
DISTRICT LAND ACQUISITION ENGINEER

EXAMINED BY: Carnie Nelson
DISTRICT PROGRAM DEVELOPMENT ENGINEER

EXAMINED BY: [Signature]
DISTRICT PROJECT IMPLEMENTATION ENGINEER

EXAMINED BY: Douglas J. [Signature]
DISTRICT CONSTRUCTION ENGINEER

EXAMINED BY: [Signature]
DISTRICT MATERIALS ENGINEER

FILE NAME: 130004-sht-notes.dgn	USER NAME: RUSERS	DESIGNED: L.F.S.	REVISED:	STATE OF ILLINOIS DEPARTMENT OF TRANSPORTATION				GENERAL NOTES AND HIGHWAY STANDARDS				F.A.S.	SECTION	COUNTY	TOTAL SHEETS	SHEET NO.
HAMPTON, LENZINI AND RENWICK, INC. SPECIALTY DESIGN/PAVE SURF DIV SPRINGFIELD, ILLINOIS 62781	PLOT SCALE: 1/8"=1'-0"	DRAWN: T.W.K.	REVISED:					OLD IL 13				899	80-1	SALINE	33	2
ILLINOIS PROFESSIONAL DESIGN FIRM LE/PE/EC CORP. MA005688	PLOT DATE: 1/15/2014	CHECKED: J.W.F.	REVISED:	SCALE: SHEET NO. OF SHEETS STA. TO STA.				CONTRACT NO. 78268				ILLINOIS FED. AID PROJECT				
		DATE: 01/14/14	REVISED:													

SUMMARY OF QUANTITIES			
CODE NO.	ITEM	CONSTRUCTION TYPE CODE 0640	
		UNIT	083-2022 FUNDING STP 80% FEDERAL 20% STATE
20100500	TREE REMOVAL, ACRES	ACRE	0.25
20200100	EARTH EXCAVATION	CU YD	35
20201200	REMOVAL AND DISPOSAL OF UNSUITABLE MATERIAL	CU YD	48
20300100	CHANNEL EXCAVATION	CU YD	130
20400800	FURNISHED EXCAVATION	CU YD	60
20700220	POROUS GRANULAR EMBANKMENT	CU YD	356
25000210	SEEDING, CLASS 2A	ACRE	0.25
25000350	SEEDING, CLASS 7	ACRE	0.25
25000400	NITROGEN FERTILIZER NUTRIENT	POUND	18
25000500	PHOSPHORUS FERTILIZER NUTRIENT	POUND	12
25000600	POTASSIUM FERTILIZER NUTRIENT	POUND	12
25000700	AGRICULTURAL GROUND LIMESTONE	TON	0.3
25100115	MULCH, METHOD 2	ACRE	0.50
25100630	EROSION CONTROL BLANKET	SQ YD	629

14 ^ SEE SPECIAL PROVISIONS

FILE NAME = 0978268-ent-500.dgn	USER NAME = *USER*	DESIGNED - L.F.S.	REVISED -	STATE OF ILLINOIS DEPARTMENT OF TRANSPORTATION	SUMMARY OF QUANTITIES OLD IL 13		F.A.S.	SECTION	COUNTY	TOTAL SHEETS	SHEET NO.	
HAMPTON, LENZINI AND RENWICK, INC. STATE OF ILLINOIS DESIGN DIVISION 1000 W. MONROE ST., SUITE 200 SPRINGFIELD, ILLINOIS 62702	PLOT SCALE = *SCALE*	DRAWN - T.W.K.	REVISED -		SCALE:	SHEET NO. 1 OF 4 SHEETS	STA.	TO STA.	899	88-1	SALINE	33 3
ELPHIN PROFFER ASSOCIATES, INC. 1111 S. W. 10TH AVE., SUITE 100 MIAMI, FL 33135	PLOT DATE = 1/23/2014	CHECKED - J.W.F.	REVISED -		CONTRACT NO. 78268							
ELPHIN PROFFER ASSOCIATES, INC. 1111 S. W. 10TH AVE., SUITE 100 MIAMI, FL 33135	DATE = 01/14/14	REVISOR -	REVISED -		ILLINOIS FED. AID PROJECT							

SUMMARY OF QUANTITIES			
CODE NO.	ITEM	UNIT	CONSTRUCTION TYPE CODE 0040
			083-2022 FUNDING STP 80% FEDERAL 20% STATE
28000250	TEMPORARY EROSION CONTROL SEEDING	POUND	52
28000400	PERIMETER EROSION BARRIER	FOOT	578
28100109	STONE RIPRAP, CLASS A5	SQ YD	307
28200200	FILTER FABRIC	SQ YD	307
42000301	PORTLAND CEMENT CONCRETE PAVEMENT 8" (JOINTED)	SQ YD	173
42001300	PROTECTIVE COAT	SQ YD	184
44000100	PAVEMENT REMOVAL	SQ YD	125
48203029	HOT-MIX ASPHALT SHOULDERS, 8"	SQ YD	334
50100100	REMOVAL OF EXISTING STRUCTURES	EACH	1
50200100	STRUCTURE EXCAVATION	CU YD	350
50800205	REINFORCEMENT BARS, EPOXY COATED	POUND	31470
50900200	STEEL RAILING, TYPE 2399	FOOT	46
51500100	NAME PLATES	EACH	1
54003000	CONCRETE BOX CULVERTS	CU YD	135.7

14 ^SEE SPECIAL PROVISIONS

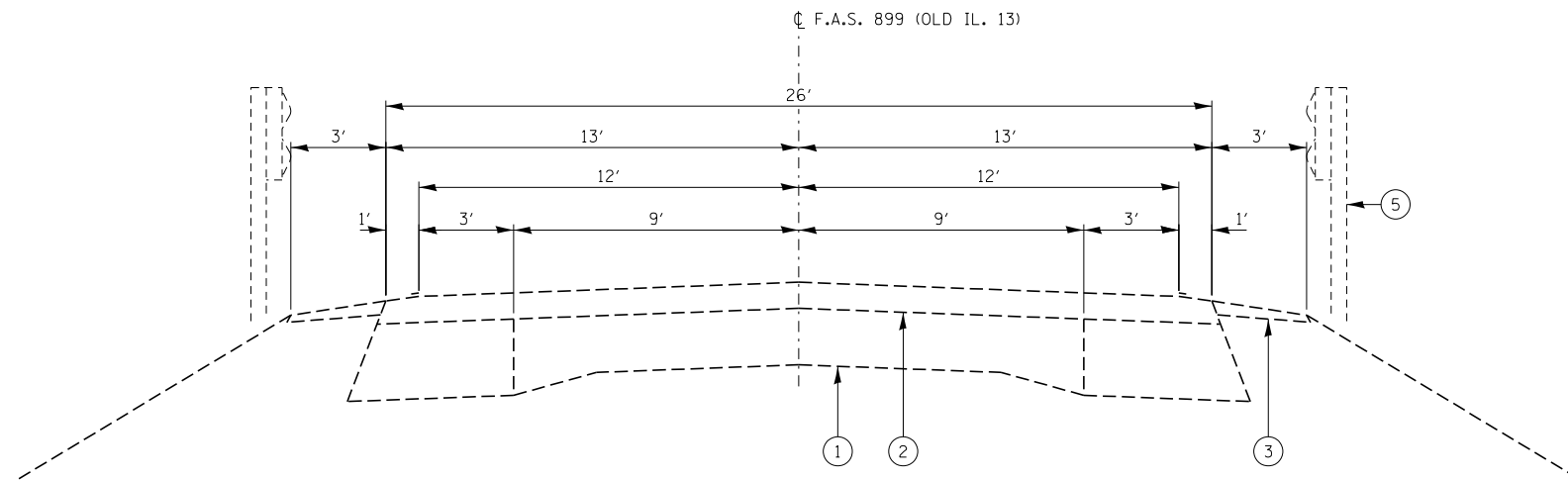
FILE NAME = 0978268-shr-500.dgn	USER NAME = *USER*	DESIGNED - L.F.S.	REVISED -	STATE OF ILLINOIS DEPARTMENT OF TRANSPORTATION	SUMMARY OF QUANTITIES OLD IL 13	F.A.S.	SECTION	COUNTY	TOTAL SHEETS	SHEET NO.	
HAMPTON, LENZHI AND RENWICK, INC. 2045 SPRINGFIELD ROAD, SUITE 201 SPRINGFIELD, ILLINOIS 62761	PLOT SCALE = #SCALE#	DRAWN - T.W.K.	REVISED -			899	9B-1	SALINE	33	4	
HLR ILLINOIS PROFESSIONAL DESIGN FIRM 1317 E. 78th STREET, P.O. BOX 1919 SPRINGFIELD, ILLINOIS 62761	PLOT DATE = 1/23/2014	CHECKED - J.W.F.	REVISED -			CONTRACT NO. 78268					
	DATE - 01/14/14	REVISIONS	REVISED -			SCALE:	SHEET NO. 2 OF 4 SHEETS	STA.	TO STA.	ILLINOIS FED. AID PROJECT	

SUMMARY OF QUANTITIES			
CODE NO.	ITEM	CONSTRUCTION TYPE CODE 0040	
		UNIT	083-2022 FUNDING STP 80% FEDERAL 20% STATE
* 63000001	STEEL PLATE BEAM GUARDRAIL, TYPE A, 6 FOOT PCSTS	FOOT	50
* 63000003	STEEL PLATE BEAM GUARDRAIL, TYPE A, 9 FOOT PCSTS	FOOT	50
* 63100087	TRAFFIC BARRIER TERMINAL, TYPE 6A	EACH	4
* 63100167	TRAFFIC BARRIER TERMINAL, TYPE 1 (SPECIAL) TANGENT	EACH	4
63200310	GUARDRAIL REMOVAL	FOOT	400
66600105	FURNISHING AND ERECTING RIGHT OF WAY MARKERS	EACH	12
67000400	ENGINEER'S FIELD OFFICE, TYPE A	CAL MO	3
67100100	MOBILIZATION	L SUM	1
70101830	TRAFFIC CONTROL AND PROTECTION, STANDARD BLR 21	L SUM	1
70106800	CHANGEABLE MESSAGE SIGN	CAL MO	7
70300220	TEMPORARY PAVEMENT MARKING - LINE 4"	FOOT	130
70301000	WORK ZONE PAVEMENT MARKING REMOVAL	SQ FT	43
* 78001110	PAINT PAVEMENT MARKING - LINE 4"	FOOT	130
* 78100100	RAISED REFLECTIVE PAVEMENT MARKER	EACH	1

19 * SEE SPECIAL PROVISIONS

* SPECIALTY ITEM

FILE NAME * 0978268-eh1-500.dgn	USER NAME * USER*	DESIGNED - L.F.S.	REVISED -	STATE OF ILLINOIS DEPARTMENT OF TRANSPORTATION	SUMMARY OF QUANTITIES OLD IL 13		F.A.S.	SECTION	COUNTY	TOTAL SHEETS	SHEET NO.	
HAMPTON, LENZINI AND RENWICK, INC. 353 SPRINGFIELD AVE. SUITE 301 SPRINGFIELD, ILLINOIS 62763	PLOT SCALE * #SCALE*	DRAWN - T.W.N.	REVISED -		SCALE:	SHEET NO. 3 OF 4 SHEETS	STA.	TO STA.	899	8B-1	SALINE	33 5
BLR ENGINEERING PROFESSIONAL DESIGN FIRM 18 E. PE. BL. CORP. MA620013	PLOT DATE * 1/23/2014	CHECKED - J.W.F.	REVISED -		CONTRACT NO. 78268		ILLINOIS FED. AID PROJECT					
	DATE - 01/14/14	REVISIED -										

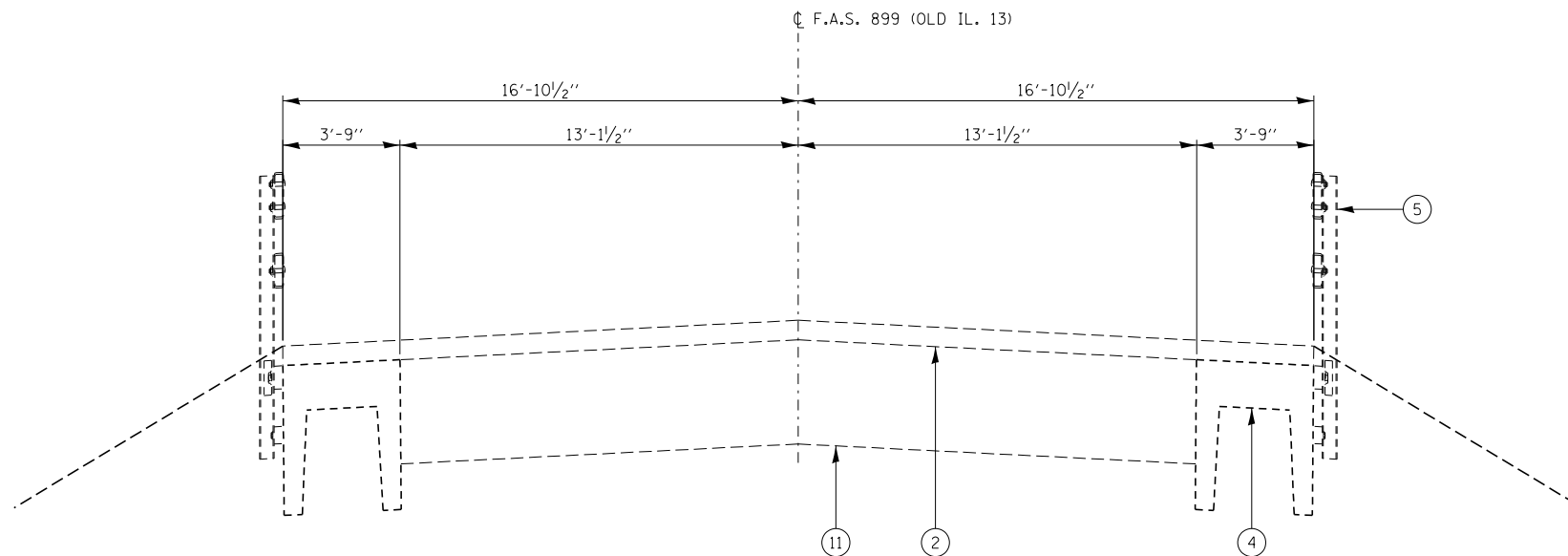


EXISTING TYPICAL CROSS SECTION (LOOKING EAST)

STA. 757+00 TO STA. 758+71.08
STA. 759+28.92 TO STA. 761+00

LEGEND

- ① EXIST CONC. PVT. (9x6x9) WITH WIDENING
- ② EXISTING HMA PAVEMENT 3"
- ③ EXISTING AGGREGATE SHOULDERS
- ④ EXISTING PRECAST CONCRETE BRIDGE SLAB
- ⑤ EXISTING GUARDRAIL OR BRIDGE RAIL
- ⑥ PCC PVT 8 JOINTED
- ⑦ POROUS GRANULAR EMBANKMENT (BACKFILL IS CA7 OR CA11 CAPPED WITH 1' CA6)
- ⑧ HMA SHOULDER 8"
- ⑨ PROPOSED GUARDRAIL OR TBT WITH 6' POSTS
- ⑩ PROPOSED GUARDRAIL OR TBT WITH 9' POSTS
- ⑪ EXISTING 10" BRIDGE APPROACH PAVEMENT



EXISTING TYPICAL CROSS SECTION (LOOKING EAST)

STA. 758+71.08 TO STA. 758+91
STA. 759+09 TO STA. 759+28.92

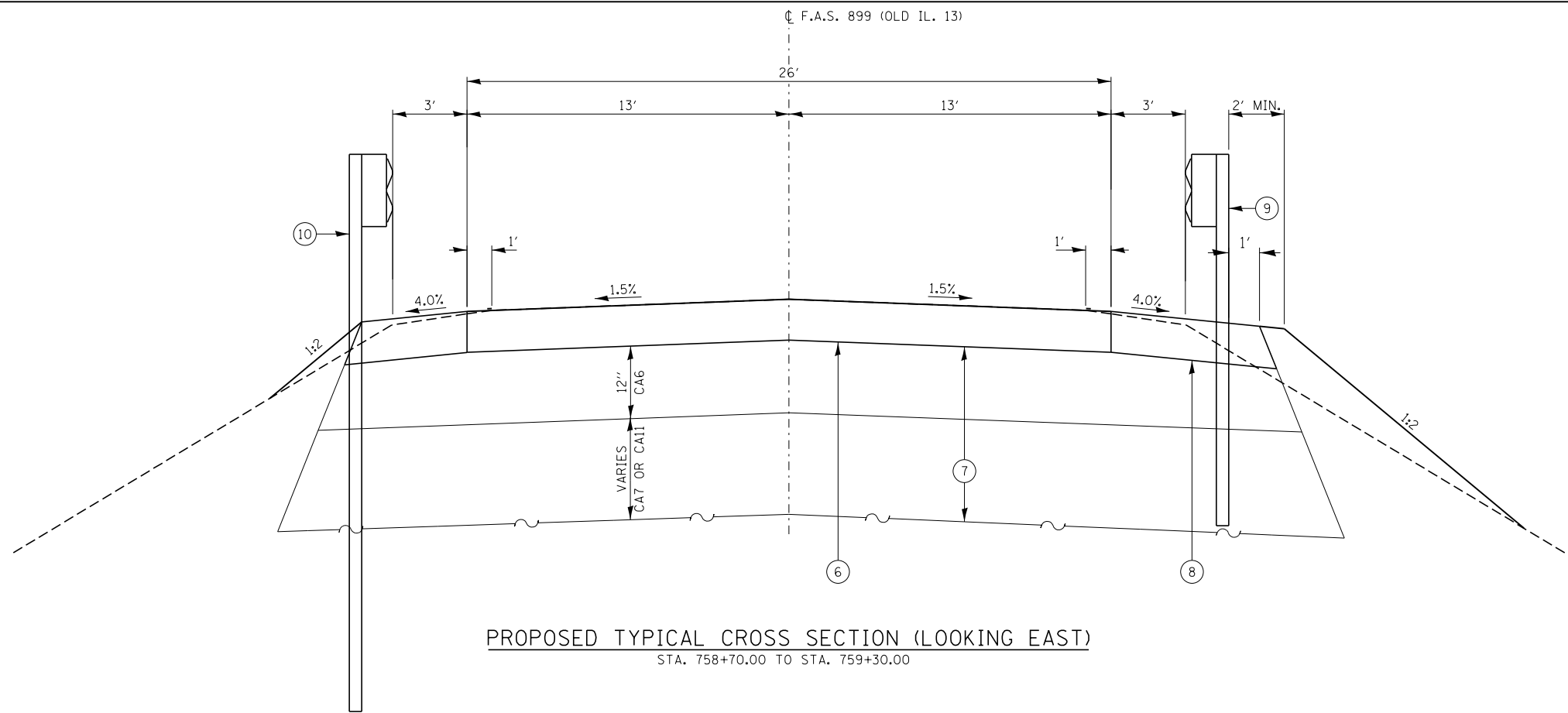
FILE NAME = D978268-sht-typical.dgn	USER NAME = #USER*	DESIGNED - L.F.S.	REVISED -
HAMPTON, LENZINI AND RENWICK, INC. 3035 STEVENSON DRIVE, SUITE 201 SPRINGFIELD, ILLINOIS 62703 ILLINOIS PROFESSIONAL DESIGN FIRM LS / PE / SE CORP. 184.000959		DRAWN - T.W.K.	REVISED -
	PLOT SCALE = #SCALE*	CHECKED - J.W.F.	REVISED -
	PLOT DATE = 1/23/2014	DATE - 01/14/14	REVISED -

STATE OF ILLINOIS
DEPARTMENT OF TRANSPORTATION

TYPICAL SECTIONS
OLD IL 13

SCALE: SHEET NO. 1 OF 2 SHEETS STA. TO STA.

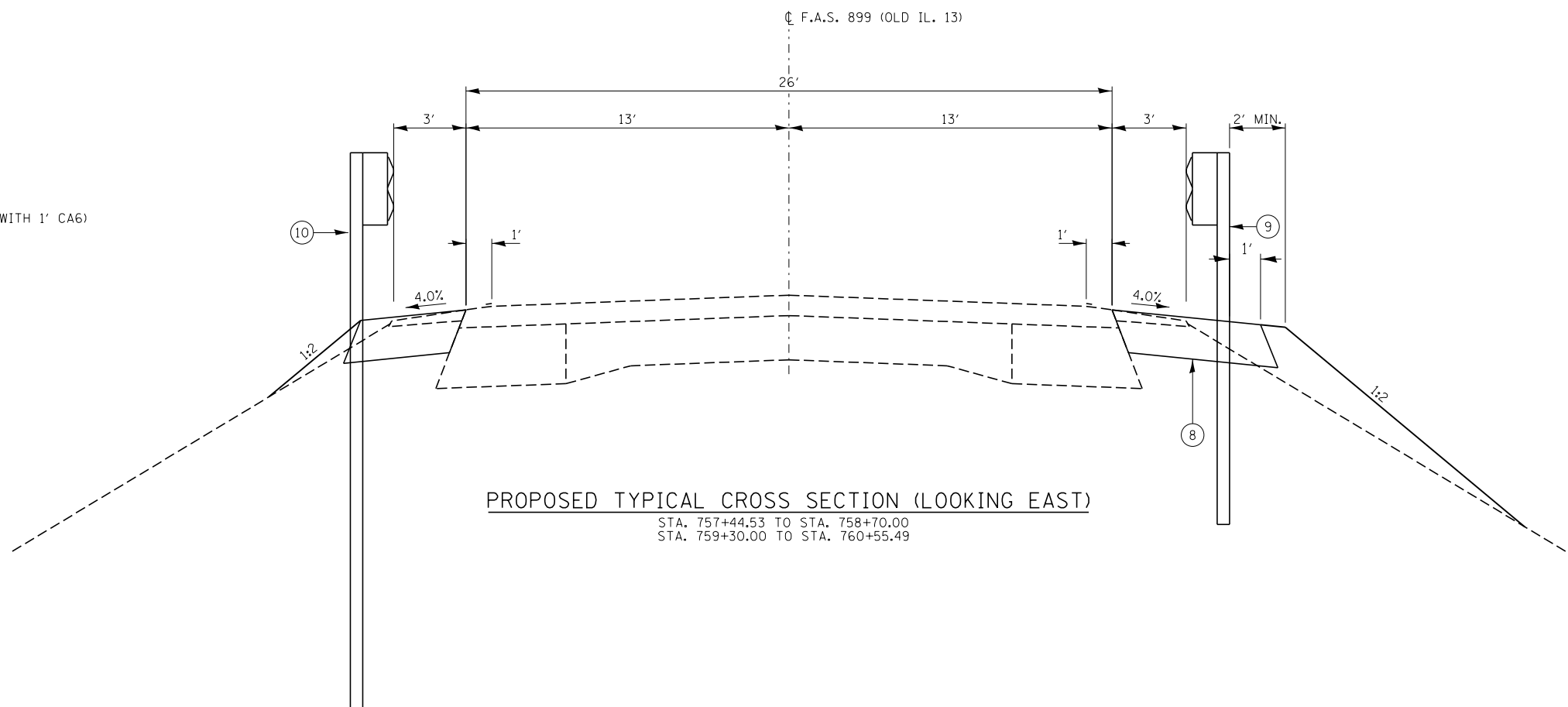
F.A.S.	SECTION	COUNTY	TOTAL SHEETS	SHEET NO.
899	8B-1	SALINE	33	7
CONTRACT NO. 78268			ILLINOIS FED. AID PROJECT	



PROPOSED TYPICAL CROSS SECTION (LOOKING EAST)
STA. 758+70.00 TO STA. 759+30.00

LEGEND

- ① EXIST CONC. PVT. (9x6x9) WITH WIDENING
- ② EXISTING HMA PAVEMENT 3"
- ③ EXISTING AGGREGATE SHOULDERS
- ④ EXISTING PRECAST CONCRETE BRIDGE SLAB
- ⑤ EXISTING GUARDRAIL OR BRIDGE RAIL
- ⑥ PCC PVT 8 JOINTED
- ⑦ POROUS GRANULAR EMBANKMENT (BACKFILL IS CA7 OR CA11 CAPPED WITH 1' CA6)
- ⑧ HMA SHOULDER 8"
- ⑨ PROPOSED GUARDRAIL OR TBT WITH 6' POSTS
- ⑩ PROPOSED GUARDRAIL OR TBT WITH 9' POSTS
- ⑪ EXISTING 10" BRIDGE APPROACH PAVEMENT



PROPOSED TYPICAL CROSS SECTION (LOOKING EAST)
STA. 757+44.53 TO STA. 758+70.00
STA. 759+30.00 TO STA. 760+55.49

FILE NAME = D978268-shr-typical.dgn	USER NAME = #USER*	DESIGNED - L.F.S.	REVISED -	STATE OF ILLINOIS DEPARTMENT OF TRANSPORTATION	TYPICAL SECTIONS OLD IL 13		F.A.S.	SECTION	COUNTY	TOTAL SHEETS	SHEET NO.
HAMPTON, LENZINI AND RENWICK, INC. 3035 STEVENSON DRIVE, SUITE 201 SPRINGFIELD, ILLINOIS 62703 ILLINOIS PROFESSIONAL DESIGN FIRM LS / PE / SE CORP. 184.000959	PLOT SCALE = #SCALE*	DRAWN - T.W.K.	REVISED -		899	8B-1	SALINE	33	8	CONTRACT NO. 78268	
	PLOT DATE = 1/23/2014	CHECKED - J.W.F.	REVISED -		SCALE:	SHEET NO. 2 OF 2 SHEETS	STA.	TO STA.		ILLINOIS FED. AID PROJECT	
		DATE - 01/14/14	REVISED -								

GUARDRAIL SCHEDULE							
LOCATION	GUARDRAIL REMOVAL	STEEL PLATE BEAM GUARD RAIL TYPE A 6 FOOT POSTS	STEEL PLATE BEAM GUARD RAIL TYPE A 9 FOOT POSTS	TRAFFIC BARRIER TERMINAL TYPE 6A	TRAFFIC BARRIER TERMINAL TYPE 1 SPECIAL (TANGENT)	TERMINAL MARKER DIRECT APPLIED	GUARDRAIL MARKERS TYPE A
	63200310	63000001	63000003	63100087	63100167	78201000	78200410
	FOOT	FOOT	FOOT	EACH	EACH	EACH	EACH
FAS 899/OLD IL 13							
LT. STA 757+74 TO LT. STA 758+74	100						
RT. STA 757+74 TO RT. STA 758+74	100						
LT. STA 759+25 TO LT. STA 760+25	100						
RT. STA 759+25 TO RT. STA 760+25	100						
RT. STA 757+44.53 TO RT. STA 760+11.12		50		2	2	2	4
LT. STA 757+88.59 TO LT. STA 760+55.49			50	2	2	2	4
TOTAL	400	50	50	4	4	4	8

PAVEMENT MARKING SCHEDULE							
LOCATION	TEMPORARY PAVEMENT MARKING LINE		PAINT PAVEMENT MARKING LINE		WORK ZONE	RAISED REFLECTIVE	RAISED REFLECTIVE
	4" SINGLE WHITE EDGE LINE	4" SKIPPED DASHED YELLOW CENTERLINE	4" SINGLE WHITE EDGE LINE	4" SKIPPED DASHED YELLOW CENTERLINE	PAVEMENT MARKING REMOVAL	PAVEMENT MARKER	PAVEMENT MARKER REMOVAL
	70300220	70300220	78001110	78001110	70301000	78100100	78300200
	FOOT	FOOT	FOOT	FOOT	SQ FT	EACH	EACH
FAS 899/OLD IL 13							
RT. STA 758+70 TO RT. STA 759+30	60		60		20		
CL. STA 758+70 TO CL. STA 759+30		10		10	3	1	1
LT. STA 758+70 TO LT. STA 759+30	60		60		20		
SUBTOTAL	120	10	120	10	43	1	1
TOTAL	130		130		43	1	1

28000400 PERIMETER EROSION BARRIER	
LOCATION	FOOT
FAS 899/OLD IL 13	
RT. STA 757+00 TO RT. STA 758+80	180
LT. STA 757+65 TO LT. STA 758+65	100
RT. STA 759+27 TO RT. STA 760+50	123
LT. STA 759+25 TO LT. STA 761+00	175
TOTAL	578

25100630 EROSION CONTROL BLANKET	
LOCATION	SQ YD
FAS 899/OLD IL 13	
RT. STA 757+00 TO RT. STA 758+80	192
LT. STA 757+65 TO LT. STA 758+65	97
RT. STA 759+27 TO RT. STA 760+50	166
LT. STA 759+25 TO LT. STA 761+00	174
TOTAL	629

EARTHWORK SUMMARY								
LOCATION	EARTH EXCAVATION	CHANNEL EXCAVATION	STRUCTURE EXCAVATION	SHRINKAGE FACTOR	% USED	EARTH EXCAVATION ADJUSTED FOR SHRINKAGE(25%)	EMBANKMENT REQUIRED	EARTHWORK BALANCE WASTE (+) OR SHORTAGE (-)
	20200100 CUBIC YARD	20300100 CUBIC YARD	50200100 CUBIC YARD			CUBIC YARD	CUBIC YARD	CUBIC YARD
FAS 899/OLD IL 13								
STA 757+10 TO STA 758+88.58	17			25.00%	100.00%	13	165	-152
STA 759+11.42 TO STA 760+90	16			25.00%	100.00%	12	189	-177
BOX CULVERT		130		25.00%	75.00%	73		73
STA 758+70 TO STA 759+30 BOX CULVERT			349	25.00%	75.00%	196		196
TOTAL USE	33	130	349			294	354	-60
						FURNISHED EXCAVATION	60	CU YD.

20100500 TREE REMOVAL, ACRES	
LOCATION	ACRES
FAS 899/OLD IL 13	
LT. STA 758+65 TO LT. STA 760+00	0.04
TOTAL	0.04
TOTAL USE	0.25

SEEDING SCHEDULE									
LOCATION	SEEDING CLASS 2A	SEEDING CLASS 7	TEMPORARY EROSION CONTROL SEEDING *	NITROGEN FERTILIZER NUTRIENT**	PHOSPHORUS FERTILIZER NUTRIENT 90 LBS/ACRE	POTASSIUM FERTILIZER NUTRIENT 90 LBS/ACRE	AGRICULTURAL GROUND LIMESTONE 2 TONS/ACRE	MULCH METHOD 2	
	25000210	25000350	28000250	25000400	25000500	25000600	25000700	25100115	
	ACRE	ACRE	LBS	LBS	LBS	LBS	TONS	ACRE	
FAS 899/OLD IL 13									
LT. STA 757+65 TO LT. STA 758+65	0.02	0.02	8	3	2	2	0.04	0.04	
LT. STA 759+25 TO LT. STA 761+00	0.04	0.04	14	5	3	3	0.07	0.07	
RT. STA 757+00 TO RT. STA 758+80	0.04	0.04	16	5	4	4	0.08	0.08	
RT. STA 759+27 TO RT. STA 760+50	0.03	0.03	14	5	3	3	0.07	0.07	
TOTAL	0.13	0.13	52	18	12	12	0.26	0.26	
TOTAL USE	0.25	0.25	52	18	12	12	0.3	0.50	

* 100 LBS/ACRE FOR 4 APPLICATIONS

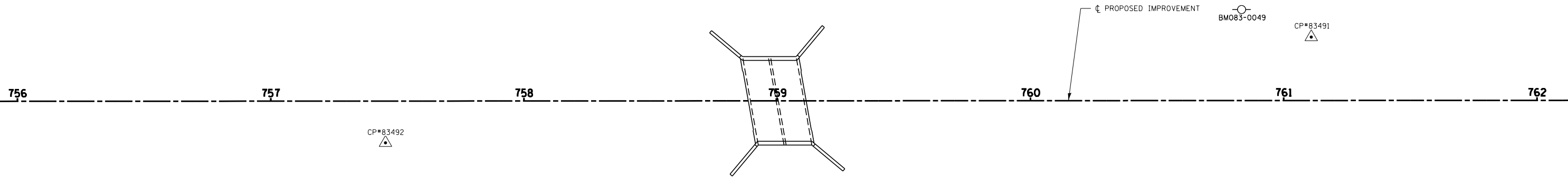
** 90 LBS/ACRE FOR SEEDING CLASS 2 AND 40 LBS/ACRE FOR SEEDING CLASS 7

ROADWAY SCHEDULE				
LOCATION	PORTLAND CEMENT CONCRETE PAVEMENT 8" (JOINT ED)	PROTECTIVE COAT	PAVEMENT REMOVAL	HOT-MIX ASPHALT SHOULDERS 8"
	42000301 SQ YD	42001300 SQ YD	44000100 SQ YD	48203029 SQ YD
FAS 899/OLD IL 13				
CL. STA 758+70 TO CL. STA 759+30	173	173	125	
LT. STA 757+74.89 TO LT. STA 760+69.49				153
RT. STA 757+30.53 TO LT. STA 760+25.12				181
BOX CULVERT		11		
TOTAL	173	184	125	334

20700220 POROUS GRANULAR EMBANKMENT	
LOCATION	CU YD
FAS 899/OLD IL 13	
CL. STA 758+75.00 TO CL. STA 758+86.58	138
CL. STA 758+86.58 TO CL. STA 758+88.58	30
CL. STA 758+88.58 TO CL. STA 759+11.42	7
CL. STA 759+11.42 TO CL. STA 759+13.42	31
CL. STA 759+13.42 TO CL. STA 759+25.50	150
TOTAL	356

STONE RIPRAP SCHEDULE		
LOCATION	STONE RIPRAP CLASS A5	FILTER FABRIC
	28100109 SQ YD	28200200 SQ YD
FAS 899/OLD IL 13		
RT. STA 758+80 TO RT. STA 759+27	233	233
FROM BOX CULVERT	74	74
TOTAL	307	307

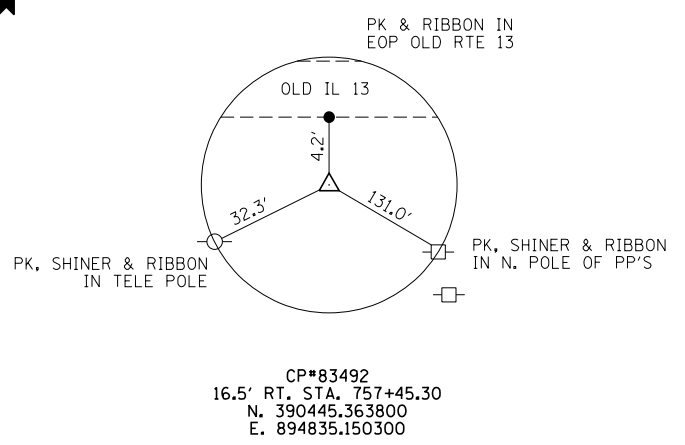
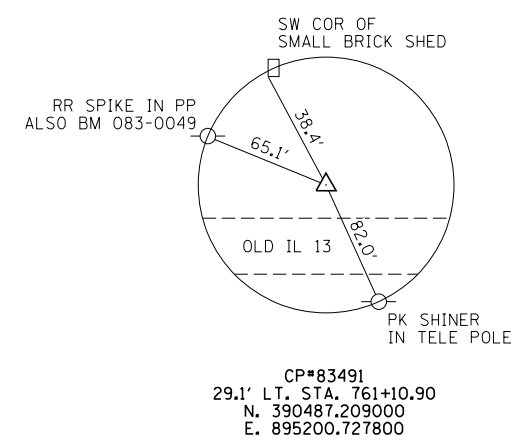
66600105 FURNISHING AND ERECTING RIGHT OF WAY MARKERS	
LOCATION	EACH
FAS 899/OLD IL 13	
30' RT STA 757+45.00	1
40' RT STA 757+45.00	1
30' LT STA 757+90.00	1
40' LT STA 757+90.00	1
40' LT STA 758+60.00	1
65' LT STA 758+60.00	1
65' LT STA 759+30.00	1
40' LT STA 759+30.00	1
40' LT STA 760+15.00	1
30' LT STA 760+15.00	1
40' RT STA 760+30.00	1
30' RT STA 760+30.00	1
TOTAL	12



FAS 899 (OLD IL 13) CENTERLINE				
DESCRIPTION	STATION	OFFSET	NORTHING	EASTING
POT	745+00.00	0	390461.1108	893589.8390
POT	771+23.6972	0	390462.7536	896213.5357

CONTROL POINTS				
POINT NUMBER	STATION	OFFSET	NORTHING	EASTING
CP# 83491	761+10.9	29.1' LT	390487.209000	895200.727800
CP# 83492	757+45.30	16.5' RT	390445.363800	894835.150300

BENCHMARK
 BM#083-0049
 RR SPIKE IN POWER POLE
 32' LT. STA. 760+47
 ELEV. 393.44



FILE NAME = D978268-sht-ties.dgn	USER NAME = *USER*	DESIGNED - L.F.S.	REVISED -
HAMPTON, LENZINI AND RENWICK, INC. 3035 STEVENSON DRIVE, SUITE 201 SPRINGFIELD, ILLINOIS 62703 ILLINOIS PROFESSIONAL DESIGN FIRM LS / PE / SE CORP. 184.000959	PLOT SCALE = *SCALE*	DRAWN - T.W.K.	REVISED -
PLOT DATE = 1/23/2014	DATE - 01/14/14	CHECKED - J.W.F.	REVISED -

**STATE OF ILLINOIS
 DEPARTMENT OF TRANSPORTATION**

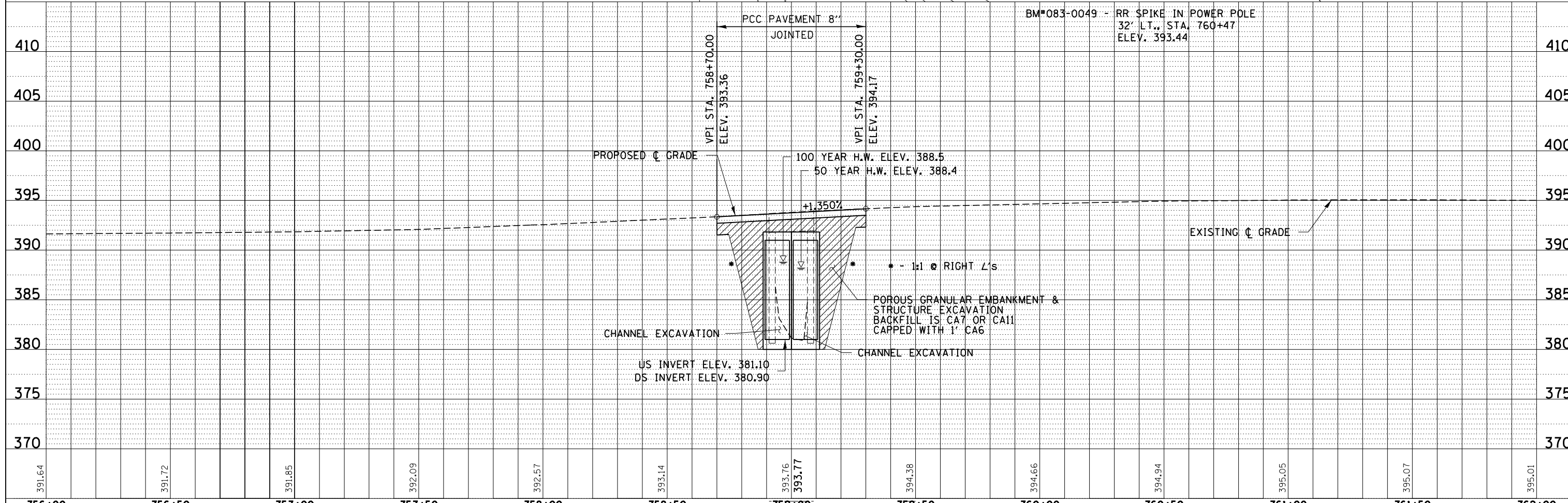
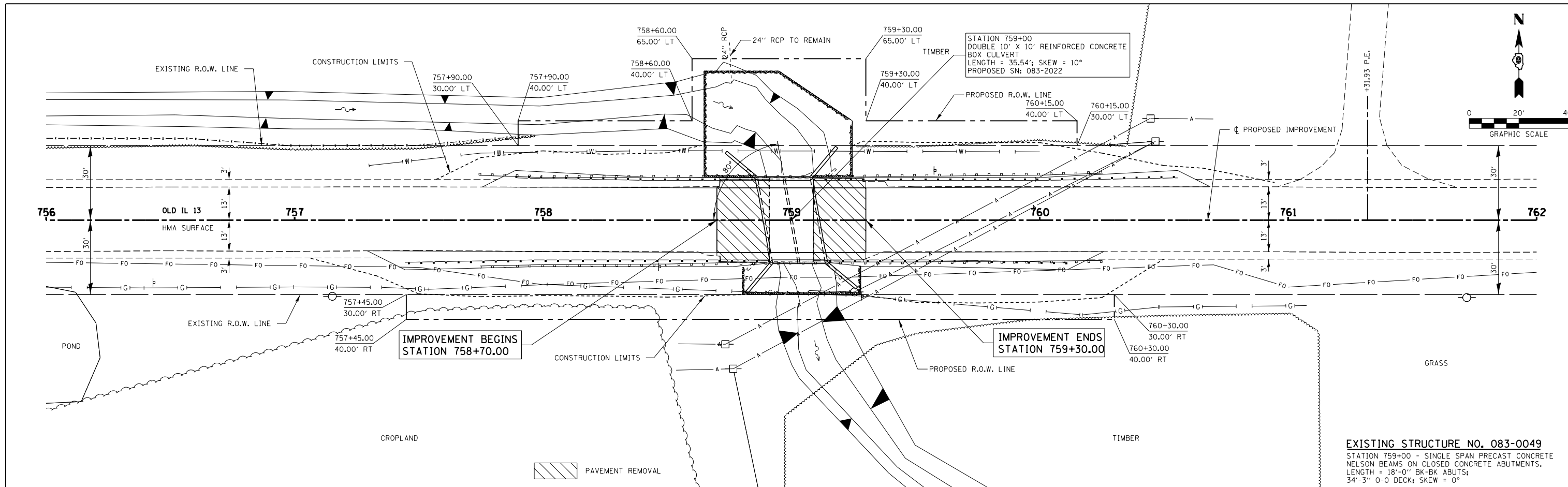
**ALIGNMENT TIES & BENCHMARKS
 OLD IL 13**

SCALE: SHEET NO. OF SHEETS STA. TO STA.

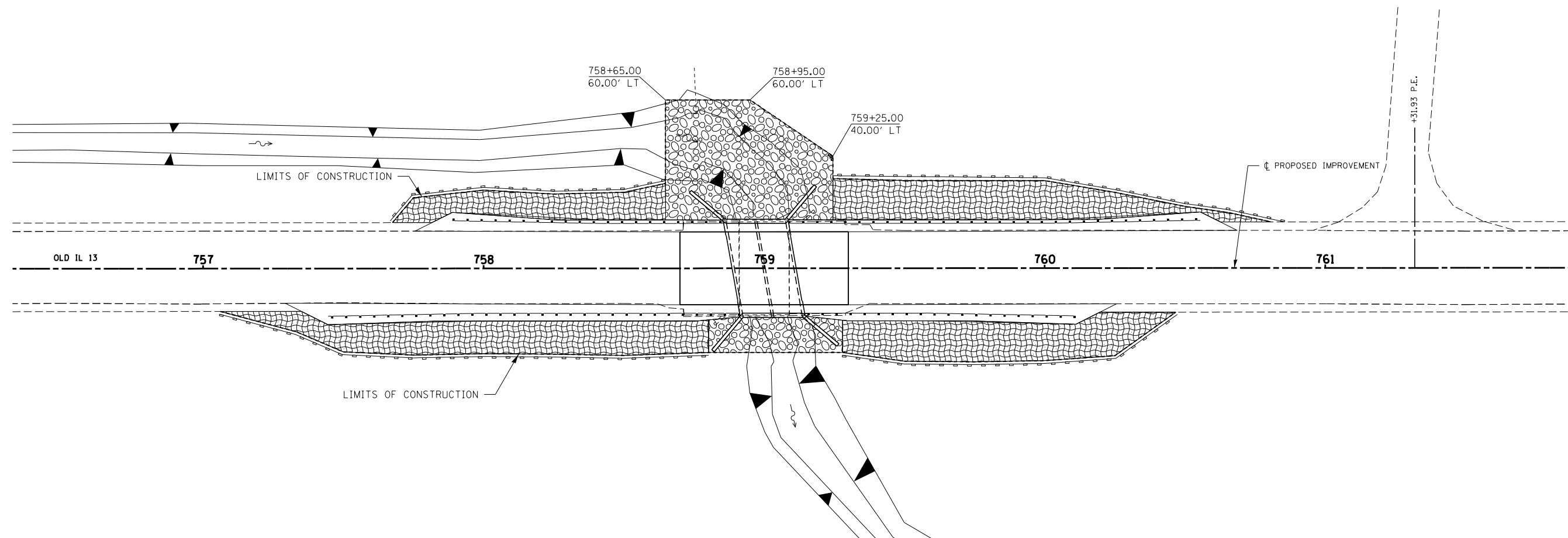
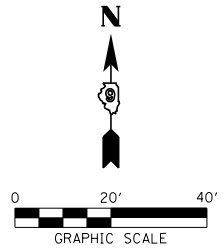
F.A.S.	SECTION	COUNTY	TOTAL SHEETS	SHEET NO.
899	8B-1	SALINE	33	10
CONTRACT NO. 78268				
ILLINOIS FED. AID PROJECT				

PLAN	SURVEYED	BY	DATE
	PLOTTED		
	GRADES CHECKED		
	STRUCTURE NOTATIONS CHECKED		
	NOTE BOOK NO.		
	CARD FILE NAME		




PROFILE	SURVEYED	BY	DATE
	PLOTTED		
	GRADES CHECKED		
	STRUCTURE NOTATIONS CHECKED		
	NOTE BOOK NO.		
	CARD FILE NAME		




756+00	756+50	757+00	757+50	758+00	758+50	759+00	759+50	760+00	760+50	761+00	761+50	762+00
391.64	391.72	391.85	392.09	392.57	393.14	393.76 393.77	394.38	394.66	394.94	395.05	395.07	395.01



LEGEND

-  PERIMETER EROSION BARRIER
-  EROSION CONTROL BLANKET & SEEDING
-  STONE RIPRAP CLASS A5

FILE NAME = D978268-sht-eros.dgn	USER NAME = #USER*	DESIGNED - L.F.S.	REVISED -
HAMPTON, LENZINI AND RENWICK, INC. 3085 STEVENSON DRIVE, SUITE 201 SPRINGFIELD, ILLINOIS 62703 ILLINOIS PROFESSIONAL DESIGN FIRM LS / PE / SE CORP. 184.000959	PLOT SCALE = *SCALE*	DRAWN - T.W.K.	REVISED -
	PLOT DATE = 1/23/2014	CHECKED - J.W.F.	REVISED -
		DATE - 01/14/14	REVISED -

**STATE OF ILLINOIS
DEPARTMENT OF TRANSPORTATION**

**EROSION CONTROL PLAN
OLD IL 13**

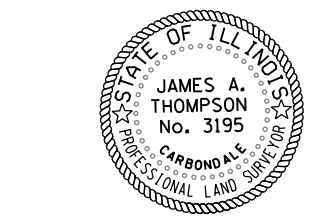
SCALE: SHEET NO. OF SHEETS STA. TO STA.

F.A.S.	SECTION	COUNTY	TOTAL SHEETS	SHEET NO.
899	8B-1	SALINE	33	12
CONTRACT NO. 78268				
ILLINOIS FED. AID PROJECT				



SE QUARTER, NW QUARTER
SECTION 15
T. 9 S., R. 5 E., 3RD P.M.

SW QUARTER, NE QUARTER
SECTION 15
T. 9 S., R. 5 E., 3RD P.M.

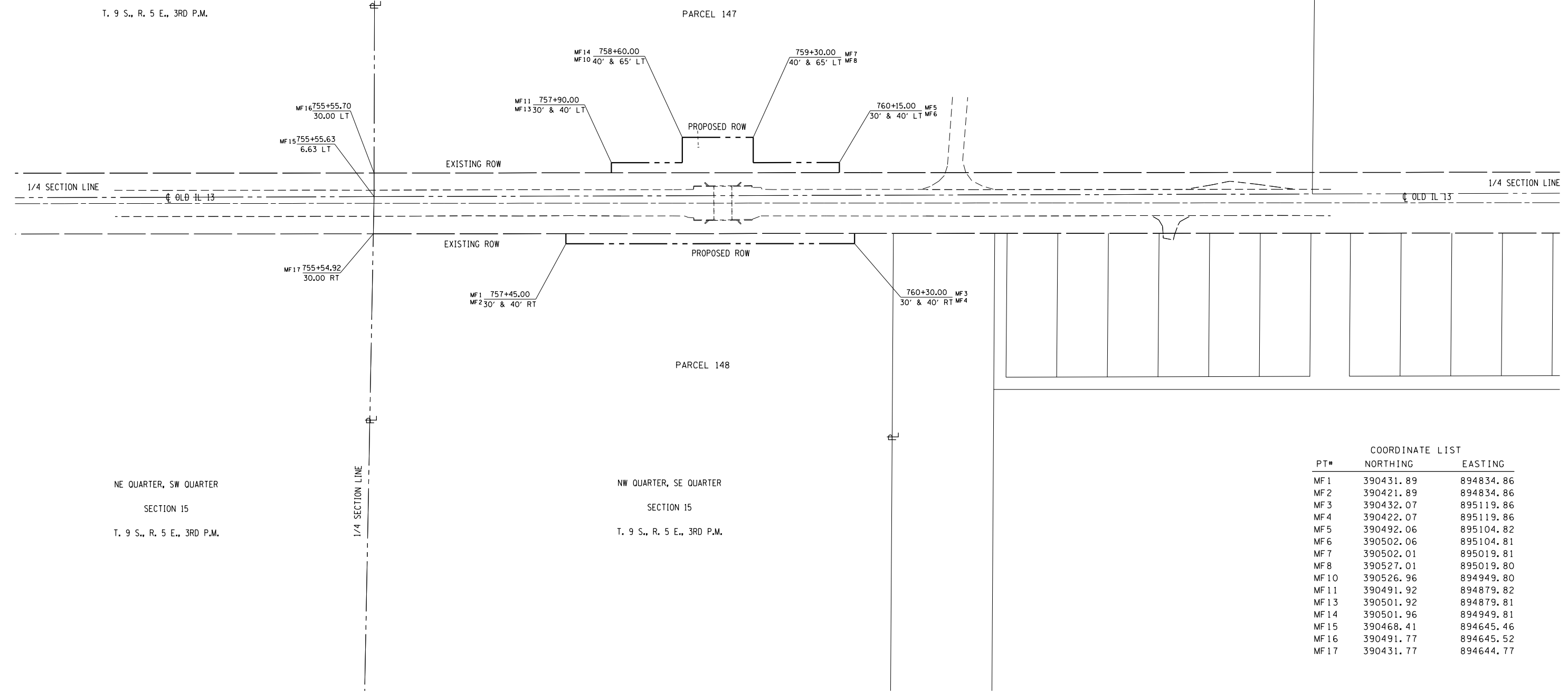


JAMES A. THOMPSON
ILLINOIS PROFESSIONAL LAND SURVEYOR

Current license expires 11/2014.

This professional service conforms to the current Illinois minimum standards for a boundary survey.

PARCEL	PROPERTY OWNER	PURPOSE	ACREAGE
147	SETH L. ADAMS & LESLIE A. CURRY	ROW	0.092
148	PAMELA JANEEN GASKINS ET. AL.	ROW	0.065



NE QUARTER, SW QUARTER
SECTION 15
T. 9 S., R. 5 E., 3RD P.M.

NW QUARTER, SE QUARTER
SECTION 15
T. 9 S., R. 5 E., 3RD P.M.

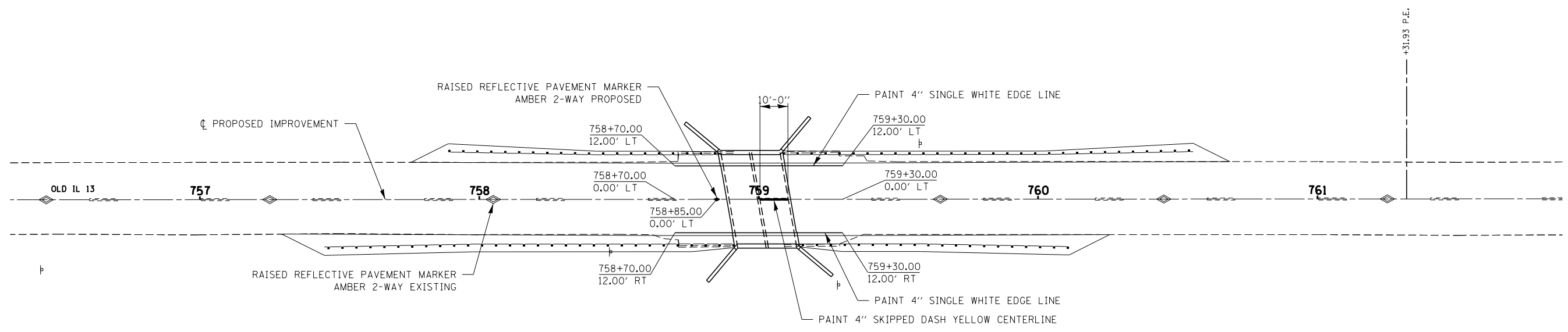
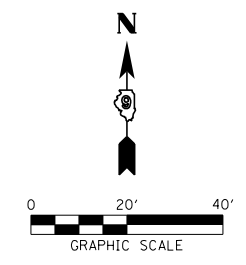
COORDINATE LIST		
PT#	NORTHING	EASTING
MF 1	390431.89	894834.86
MF 2	390421.89	894834.86
MF 3	390432.07	895119.86
MF 4	390422.07	895119.86
MF 5	390492.06	895104.82
MF 6	390502.06	895104.81
MF 7	390502.01	895019.81
MF 8	390527.01	895019.80
MF 10	390526.96	894949.80
MF 11	390491.92	894879.82
MF 13	390501.92	894879.81
MF 14	390501.96	894949.81
MF 15	390468.41	894645.46
MF 16	390491.77	894645.52
MF 17	390431.77	894644.77

FILE NAME =	USER NAME = porterc	DESIGNED -	REVISED -
c:\pwork\pwork\porterc\10289165\78268-shft-row.dgn		DRAWN -	REVISED -
Default	PLOT SCALE = 100.0000' / in.	CHECKED -	REVISED -
	PLOT DATE = 12/6/2013	DATE -	REVISED -

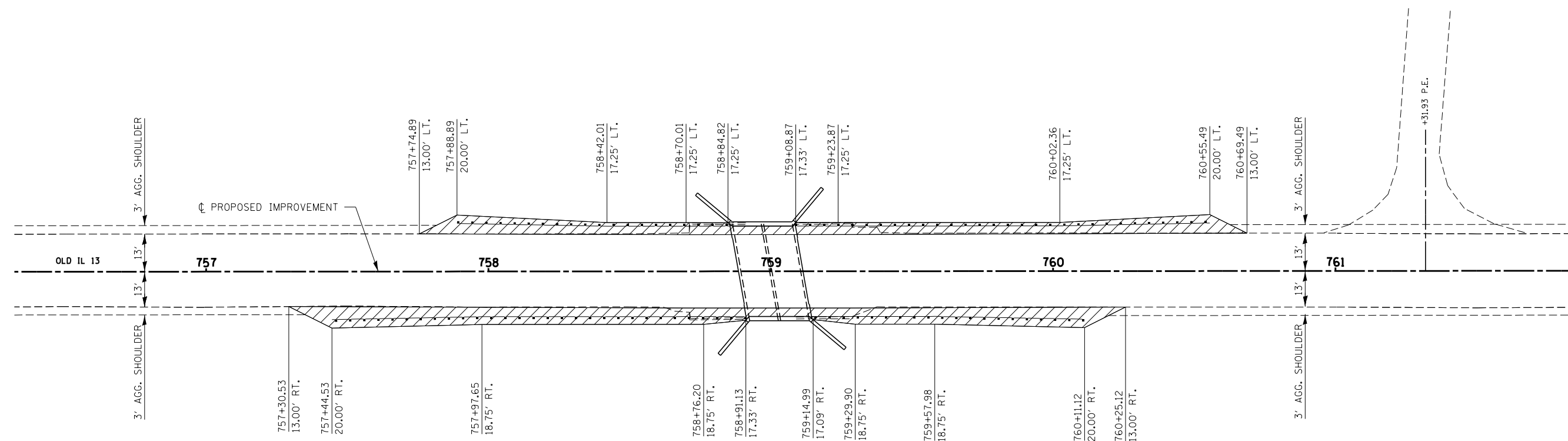
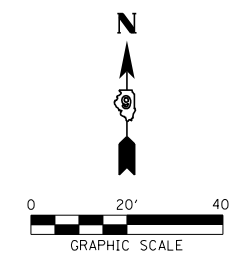
STATE OF ILLINOIS
DEPARTMENT OF TRANSPORTATION

R-99-013-12
RIGHT OF WAY PLANS/SN083-0049
SCALE: 1" = 100' SHEET 1 OF 1 SHEETS STA. 755+00.00 TO STA. 765+00.00

F.A. RTE.	SECTION	COUNTY	TOTAL SHEETS	SHEET NO.
OLD 13	8B-1	SALINE	33	13
CONTRACT NO.			78268	
ILLINOIS FED. AID PROJECT				



FILE NAME = D:\978268-sht-pmk.dgn	USER NAME = \$USER*	DESIGNED - L.F.S.	REVISED -	STATE OF ILLINOIS DEPARTMENT OF TRANSPORTATION	PAVEMENT MARKING PLAN OLD IL 13			F.A.S.	SECTION	COUNTY	TOTAL SHEETS	SHEET NO.	
HAMPTON, LENZINI AND RENWICK, INC. <small>3085 STEVENSON DRIVE, SUITE 201 SPRINGFIELD, ILLINOIS 62703 ILLINOIS PROFESSIONAL DESIGN FIRM LS / PE / SE CORP. 184.000959</small>	PLOT SCALE = *SCALE*	DRAWN - T.W.K.	REVISED -					899	8B-1	SALINE	33	14	
	PLOT DATE = 1/23/2014	CHECKED - J.W.F.	REVISED -		SCALE:			SHEET NO.	OF SHEETS	STA.	TO STA.	CONTRACT NO. 78268	
		DATE - 01/14/14	REVISED -		ILLINOIS FED. AID PROJECT								



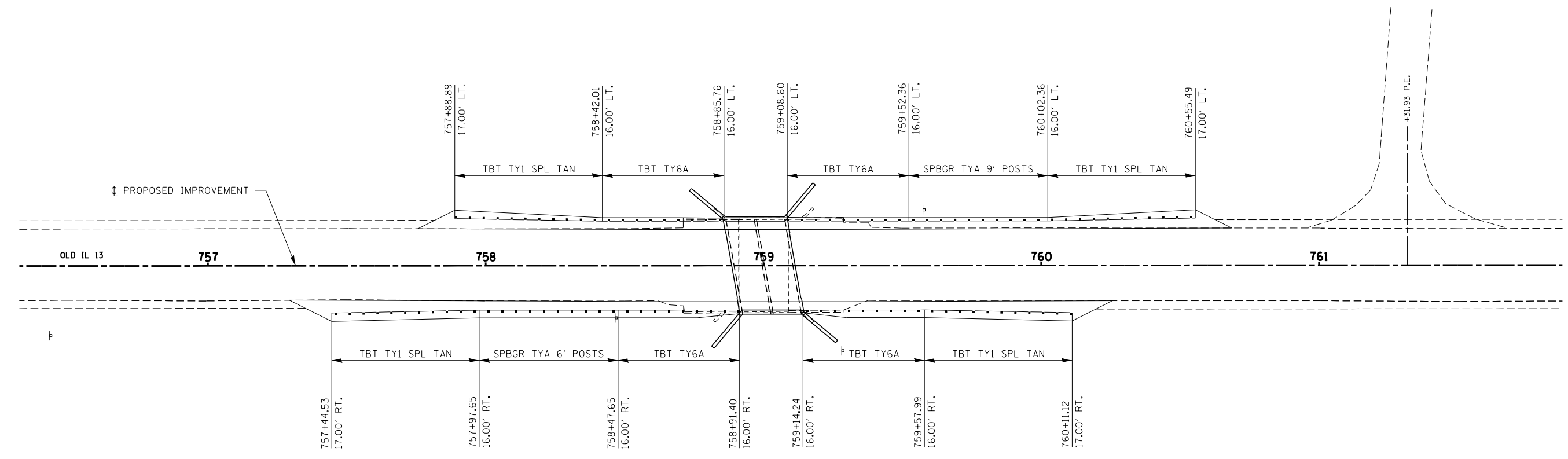
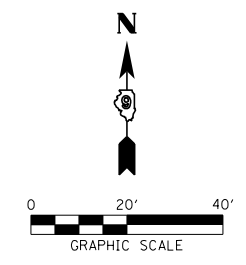
LEGEND
 HMA SHOULDERS 8"

FILE NAME = D978268-sht-details.dgn	USER NAME = \$USER*	DESIGNED - L.F.S.	REVISED -
HAMPTON, LENZINI AND RENWICK, INC. 3085 STEVENSON DRIVE, SUITE 201 SPRINGFIELD, ILLINOIS 62703 ILLINOIS PROFESSIONAL DESIGN FIRM LS / PE / SE CORP. 184.000959		DRAWN - T.W.K.	REVISED -
	PLOT SCALE = *SCALE*	CHECKED - J.W.F.	REVISED -
	PLOT DATE = 1/23/2014	DATE - 01/14/14	REVISED -

**STATE OF ILLINOIS
DEPARTMENT OF TRANSPORTATION**

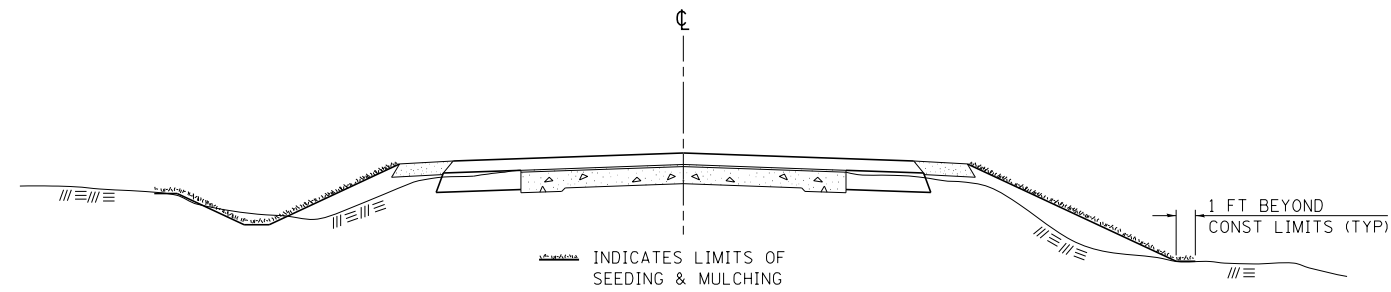
PAVED SHOULDER LAYOUT OLD IL 13			
SCALE:	SHEET NO.	OF SHEETS	STA. TO STA.

F.A.S.	SECTION	COUNTY	TOTAL SHEETS	SHEET NO.
899	8B-1	SALINE	33	15
CONTRACT NO. 78268				
ILLINOIS FED. AID PROJECT				



FILE NAME = D978268-sht-details2.dgn	USER NAME = \$USER*	DESIGNED - L.F.S.	REVISED -	STATE OF ILLINOIS DEPARTMENT OF TRANSPORTATION	GUARDRAIL LAYOUT OLD IL 13			F.A.S.	SECTION	COUNTY	TOTAL SHEETS	SHEET NO.	
HAMPTON, LENZINI AND RENWICK, INC. 3085 STEVENSON DRIVE, SUITE 201 SPRINGFIELD, ILLINOIS 62703 ILLINOIS PROFESSIONAL DESIGN FIRM LS / PE / SE CORP. 184.000959		DRAWN - T.W.K.	REVISED -		899	8B-1	SALINE	33	16	CONTRACT NO. 78268			
	PLOT SCALE = *SCALE*	CHECKED - J.W.F.	REVISED -		SCALE:			SHEET NO.	OF SHEETS	STA.	TO STA.	ILLINOIS FED. AID PROJECT	
	PLOT DATE = 1/23/2014	DATE - 01/14/14	REVISED -										

SEEDING & MULCHING



GENERAL NOTES

IN GENERAL, ALL EARTH SURFACES DISTURBED DURING CONSTRUCTION OPERATIONS SHALL BE SEEDED AND MULCHED UPON COMPLETION OF ALL GRADING OPERATIONS.

FERTILIZER NUTRIENTS AND LIMESTONE SHALL BE APPLIED TO ALL SEEDED AREAS.

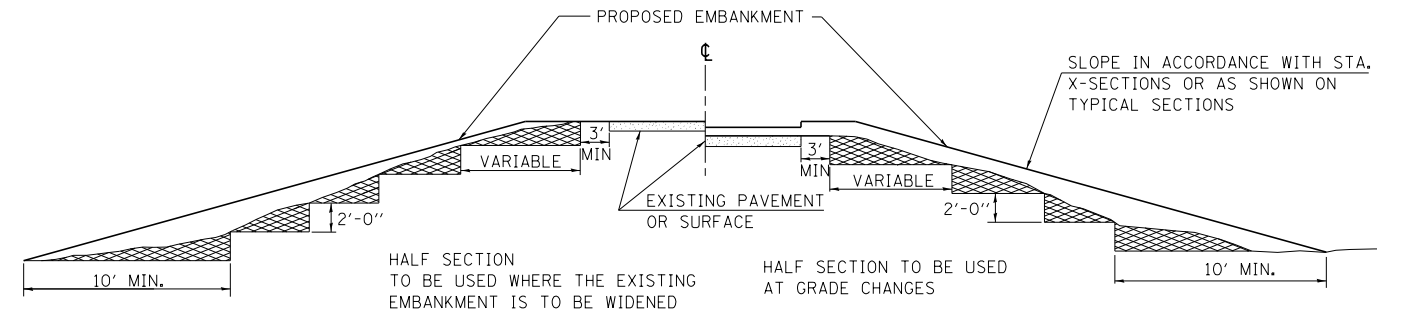
THE RATES OF APPLICATION OF FERTILIZER, MULCH AND LIMESTONE SHALL BE AS SPECIFIED IN THE SPECIAL PROVISIONS.

SECTIONS 250 AND 251 OF THE STANDARD SPECIFICATIONS SHALL GOVERN THIS WORK EXCEPT AS SPECIFIED HEREIN OR AS NOTED IN THE SPECIAL PROVISIONS.

REVISIONS	
REDRAWN	2-15-89
REVISED	8-15-94
REVISED	6-3-99
REVISED	3-27-08

STD. 9-12

TYPICAL CROSS SECTION SHOWING STEP CONSTRUCTION ON EXISTING FILL



MATERIAL TO BE REMOVED AND REPLACED IN THE EMBANKMENT IN ACCORDANCE WITH ART. 205.04 OF THE STANDARD SPECIFICATION. COST TO BE INCLUDED IN THE VARIOUS ITEMS OF EXCAVATION AND NO ADDITIONAL COMPENSATION WILL BE ALLOWED BECAUSE OF THIS WORK.

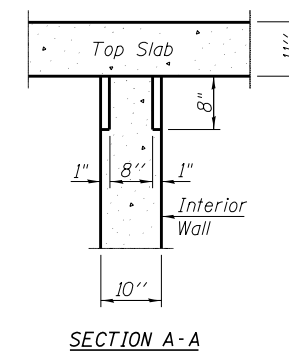
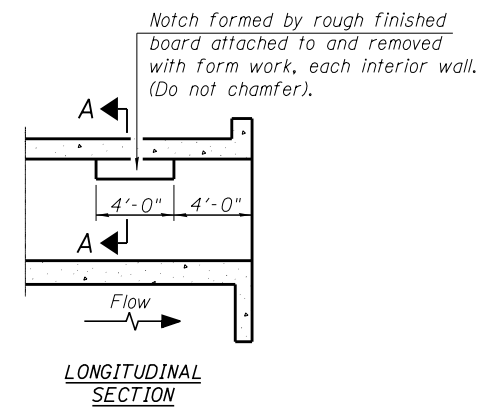
REVISIONS	
REDRAWN	2-15-89
REVISED	8-15-94
CHECKED	6-3-99
RESIZED	5-7-08

STD. 9-16

FILE NAME = D978268-sht-details3.dgn	USER NAME = *USER*	DESIGNED - L.F.S.	REVISED -	STATE OF ILLINOIS DEPARTMENT OF TRANSPORTATION	STANDARD DETAILS DISTRICT 9 OLD IL 13	F.A.S.	SECTION	COUNTY	TOTAL SHEETS	SHEET NO.
D978268	3085 STEVENSON DRIVE, SUITE 201 SPRINGFIELD, ILLINOIS 62703 ILLINOIS PROFESSIONAL DESIGN FIRM LS / PE / SE CORP. 184.000959	DRAWN - T.W.K.	REVISED -			899	8B-1	SALINE	33	17
PLOT SCALE = *SCALE*	CHECKED - J.W.F.	REVISED -				CONTRACT NO. 78268				
PLOT DATE = 1/23/2014	DATE - 01/14/14	REVISED -				FED. ROAD DIST. NO. ILLINOIS FED. AID PROJECT				

GENERAL NOTES

Reinforcement bars designated (E) shall be epoxy coated.
 Precast alternate is not allowed at this location.
 Layout of slope protection system may be varied to suit ground conditions in the field as directed by the Engineer.
 Excavation behind existing abutment walls shall be performed to balance front and back soil pressure before removing the existing superstructure.
 Protective coat shall be applied to the top and exposed inside face of the headwalls per Section 503.19 of the Standard Specifications.



**PHOEBE NESTING
 SITE DETAILS
 (Downstream End Only)**

TOTAL BILL OF MATERIAL

ITEM	UNIT	TOTAL
Removal of Existing Structures	Each	1
Concrete Box Culverts	Cu. Yd.	135.7
Reinforcement Bars, Epoxy Coated	Pound	31,470
Name Plates	Each	1
Rockfill-Foundation	Ton	90
Removal and Disposal of Unsuitable Material	Cu. Yd.	48
Stone Riprap, Class A5	Sq. Yd.	74
Filter Fabric	Sq. Yd.	74
Steel Railing, Type 2399	Foot	46
Protective Coat	Sq. Yd.	11

FILE NAME = 083-018-14.dwg
 CB PROJECT NO. 083-2022

CB Coombe-Bloxdorf P.C.
 - CIVIL ENGINEERS -
 - STRUCTURAL ENGINEERS -
 - LAND SURVEYORS -
 Design Firm License No. 184-002703

USER NAME = *USER*	DESIGNED - CME	REVISED -
	CHECKED - MCB	REVISED -
PLOT SCALE = *SCALE*	DRAWN - MML	REVISED -
PLOT DATE = 1/23/2014	CHECKED - MCB	REVISED -

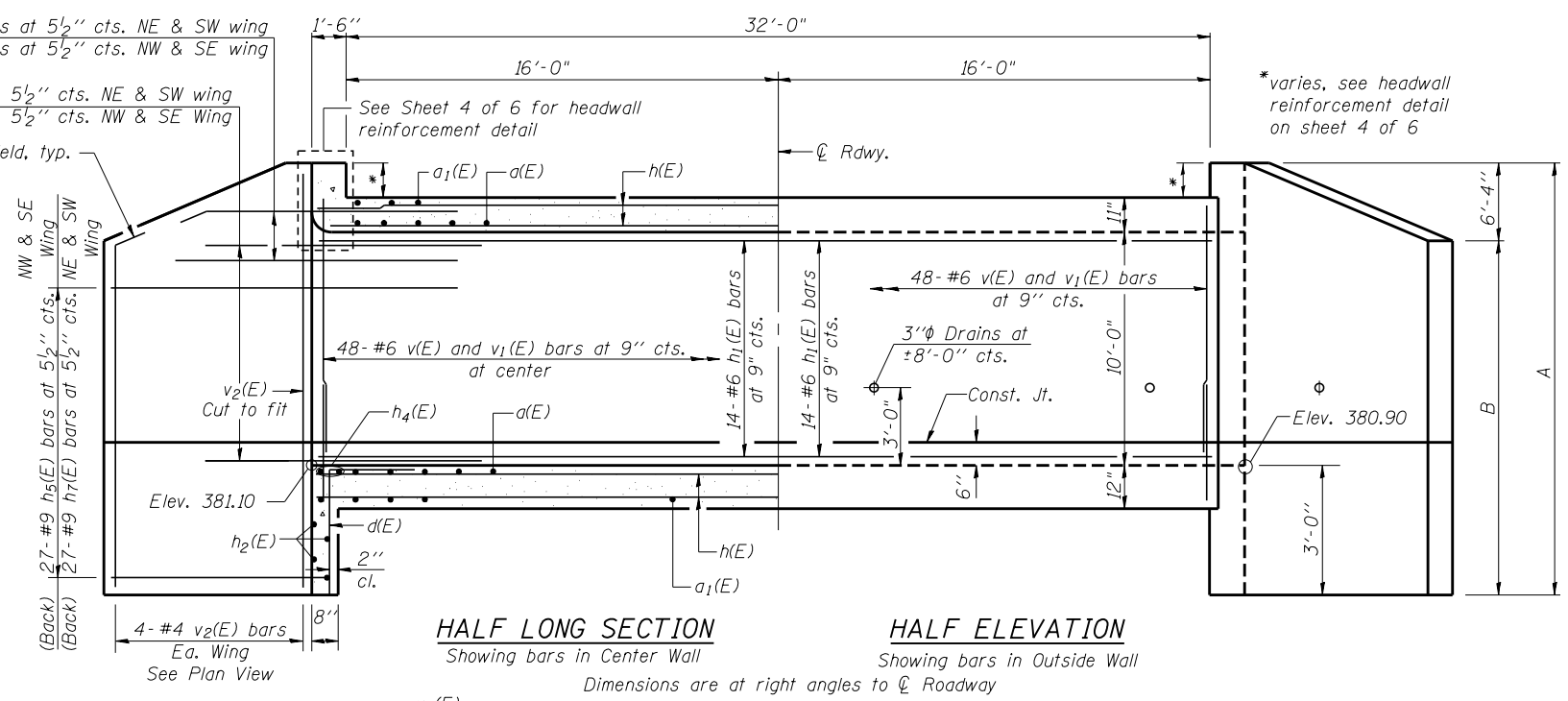
**STATE OF ILLINOIS
 DEPARTMENT OF TRANSPORTATION**

**GENERAL DATA
 STRUCTURE NO. 083-2022**

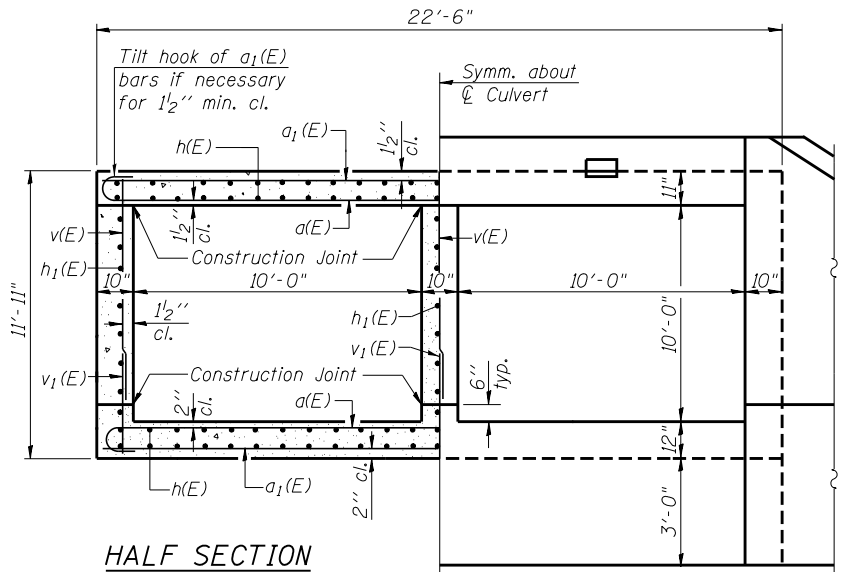
SHEET NO. 2 OF 6 SHEETS

F.A.S. RTE.	SECTION	COUNTY	TOTAL SHEETS	SHEET NO.
899	8B-1	SALINE	33	19
CONTRACT NO. 78268				
ILLINOIS FED. AID PROJECT				

(Back)
 4-#9 h₃(E) bars at 5 1/2" cts. NE & SW wing
 4-#9 h₆(E) bars at 5 1/2" cts. NW & SE wing
 (Front)
 23-#9 h₃(E) bars at 5 1/2" cts. NE & SW wing
 23-#9 h₆(E) bars at 5 1/2" cts. NW & SE wing



HALF LONG SECTION
 Showing bars in Center Wall
HALF ELEVATION
 Showing bars in Outside Wall
 Dimensions are at right angles to ϕ Roadway

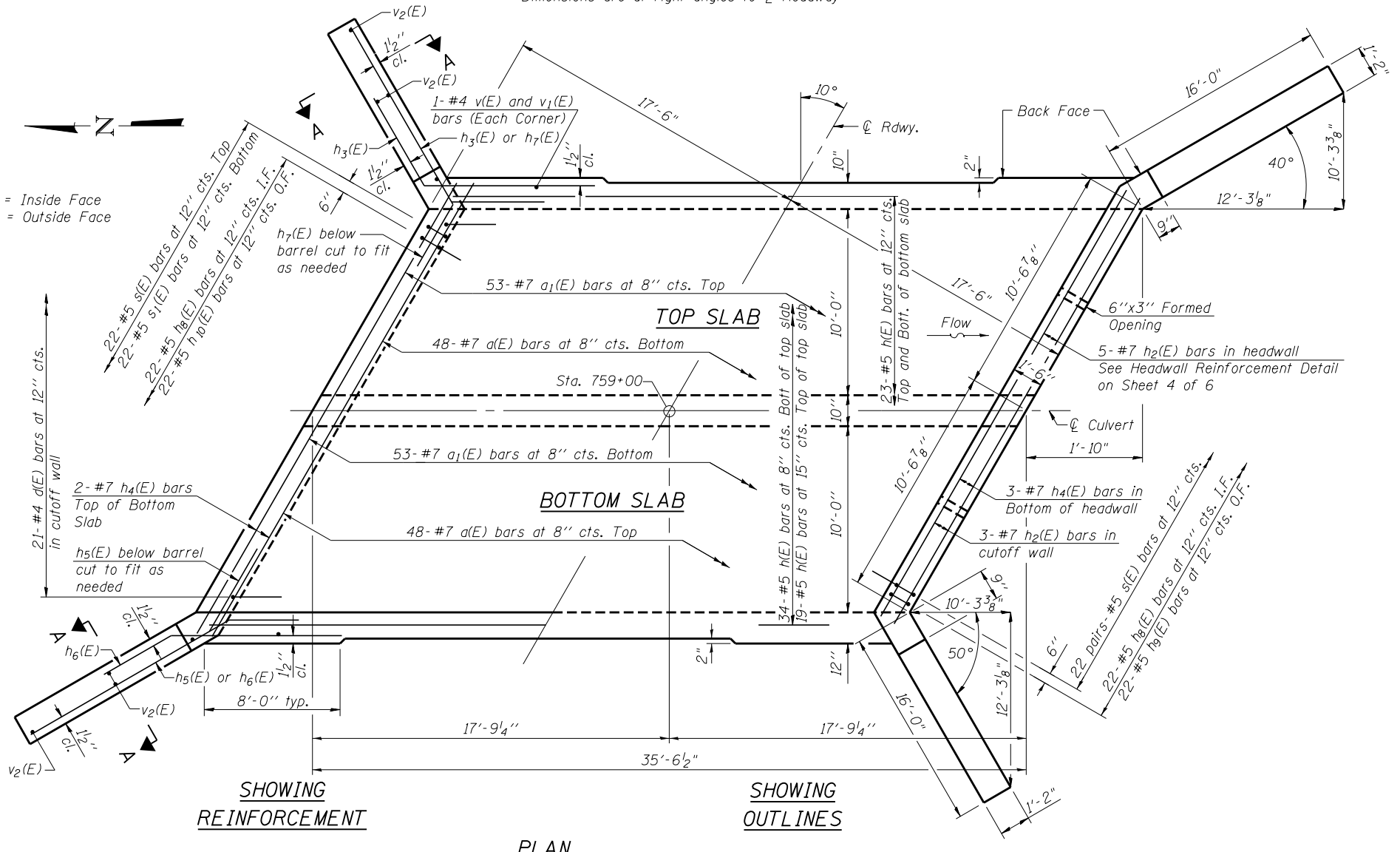


HALF SECTION THRU BARREL
HALF END ELEVATION

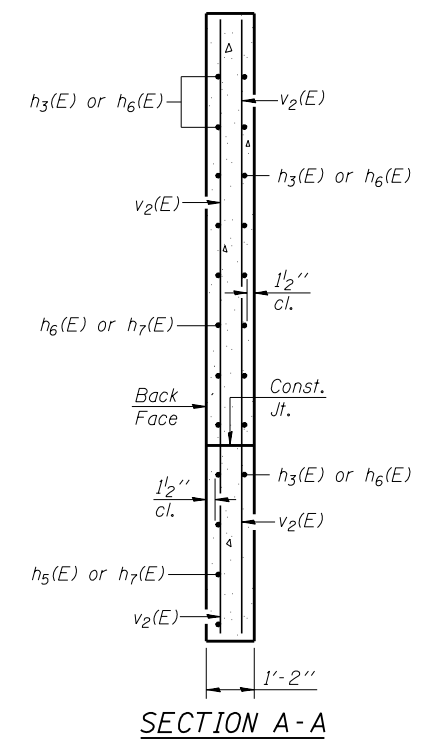
WINGWALL DIMENSIONS

Location	A	B
NE Wing	16'-1 3/4"	9'-9 3/4"
NW Wing	15'-10 1/2"	9'-6 1/2"
SE Wing	16'-5 1/4"	10'-1 1/4"
SW Wing	16'-1 3/4"	9'-9 3/4"

I.F. = Inside Face
 O.F. = Outside Face



SHOWING REINFORCEMENT
SHOWING OUTLINES
PLAN



SECTION A-A

Notes:
 A distance of half the length of the wingwall but not less than six feet of the barrel shall be poured monolithically with the wingwalls.
 See Sheet 4 of 6 for drain detail, headwall reinforcement details, bar details and Bill of Material.

FILE NAME = ...
 PROJECT NO. 08055-24

DB-H-R
 7-1-10
Coombe-Bloxdorf P.C.
 CIVIL ENGINEERS-
 STRUCTURAL ENGINEERS-
 LAND SURVEYORS
 Design Firm License No. 184-002703

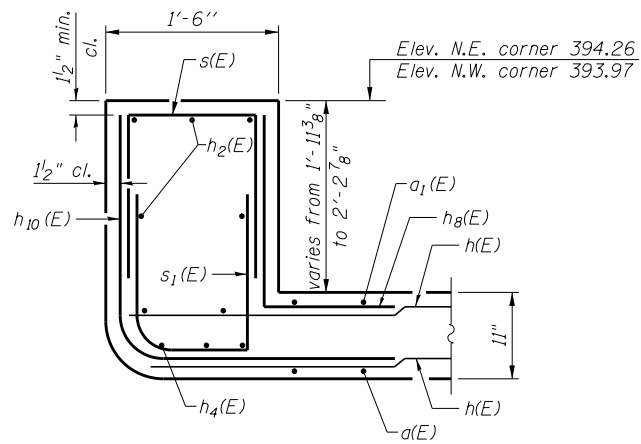
USER NAME = *USER*	DESIGNED - CME	REVISED -
CHECKED - MCB	REVISOR -	
PLOT SCALE = *SCALE*	DRAWN - MML	REVISOR -
PLOT DATE = 1/23/2014	CHECKED - MCB	REVISOR -

STATE OF ILLINOIS
DEPARTMENT OF TRANSPORTATION

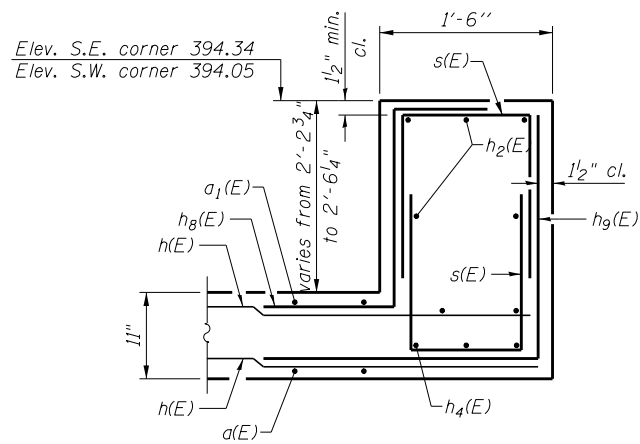
CULVERT DETAILS
STRUCTURE NO. 083-2022

SHEET NO. 3 OF 6 SHEETS

F.A.S. RTE.	SECTION	COUNTY	TOTAL SHEETS	SHEET NO.
899	8B-1	SALINE	33	20
CONTRACT NO. 78268				
ILLINOIS FED. AID PROJECT				

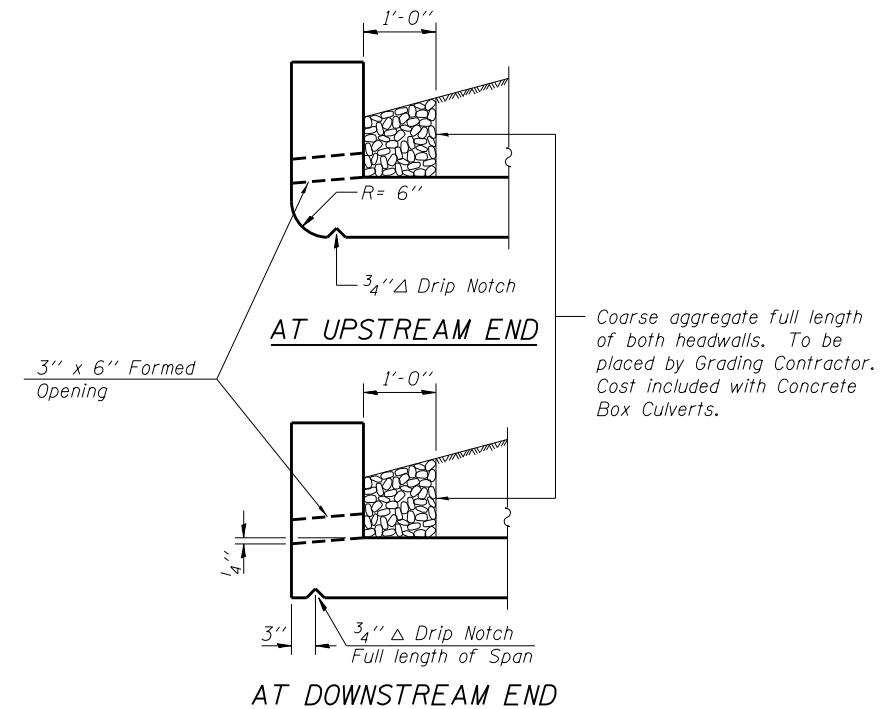


NORTH HEADWALL REINFORCEMENT

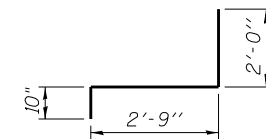


SOUTH HEADWALL REINFORCEMENT

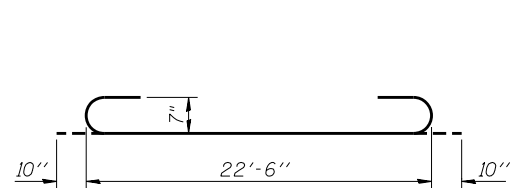
HEADWALL REINFORCEMENT DETAIL



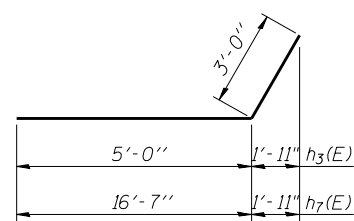
DRAIN DETAIL



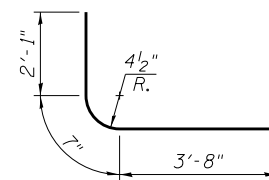
BAR h8(E)



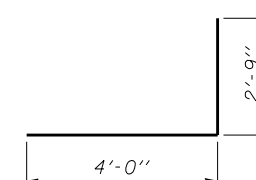
BAR a(E)



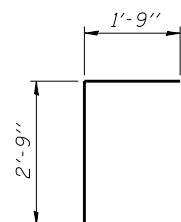
BARS h3(E) & h7(E)



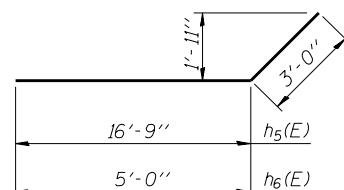
BAR h10(E)



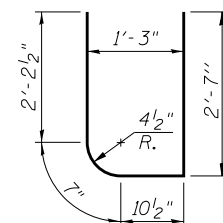
BAR h9(E)



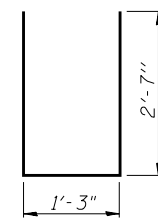
BAR d(E)



BARS h5(E) & h6(E)



BAR s1(E)



BAR s(E)

BILL OF MATERIAL

Bar	No.	Size	Length	Shape
a(E)	96	#7	24'-2"	U
a1(E)	106	#7	22'-6"	—
d(E)	42	#4	4'-6"	—
h(E)	99	#5	35'-2"	—
h1(E)	42	#6	35'-2"	—
h2(E)	16	#7	21'-2"	—
h3(E)	54	#9	8'-0"	—
h4(E)	10	#7	22'-10"	—
h5(E)	54	#9	19'-9"	—
h6(E)	54	#9	8'-0"	—
h7(E)	54	#9	19'-7"	—
h8(E)	44	#5	5'-7"	—
h9(E)	22	#5	6'-9"	—
h10(E)	22	#5	6'-4"	—
s(E)	66	#5	6'-5"	U
s1(E)	22	#5	6'-3"	U
v(E)	148	#6	10'-1"	—
v1(E)	148	#6	4'-6"	—
v2(E)	16	#4	16'-1"	—
Concrete Box Culverts			Cu. Yd.	135.7
Reinforcement Bars, Epoxy Coated			Pound	31,470

FILE NAME = \\s1\c\p\cb\112.dgn
 CB PROJECT NO. 08055-214

Coombe-Bloxdorf P.C.
 CIVIL ENGINEERS
 STRUCTURAL ENGINEERS
 LAND SURVEYORS
 Design Firm License No. 184-002703

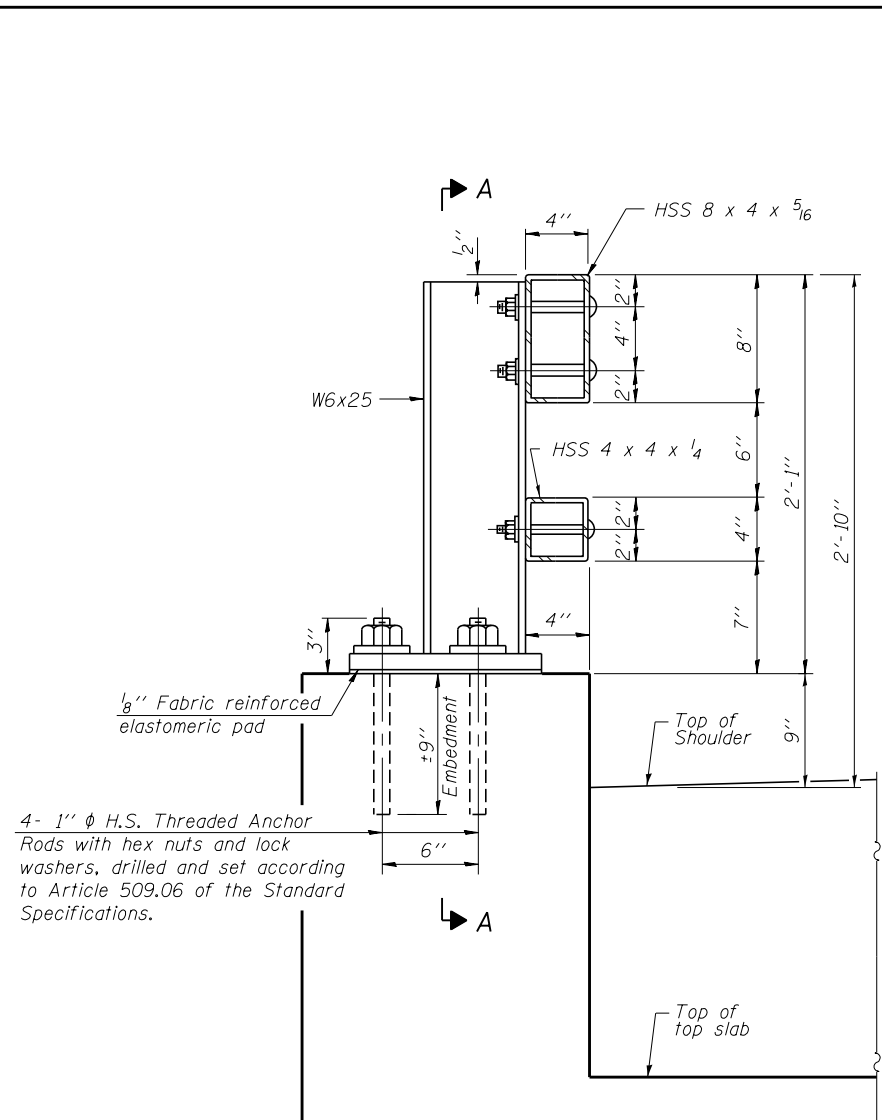
USER NAME = *USER*	DESIGNED - CME	REVISED -
PLOT SCALE = *SCALE*	CHECKED - MCB	REVISED -
PLOT DATE = 1/23/2014	DRAWN - MML	REVISED -
	CHECKED - MCB	REVISED -

STATE OF ILLINOIS
 DEPARTMENT OF TRANSPORTATION

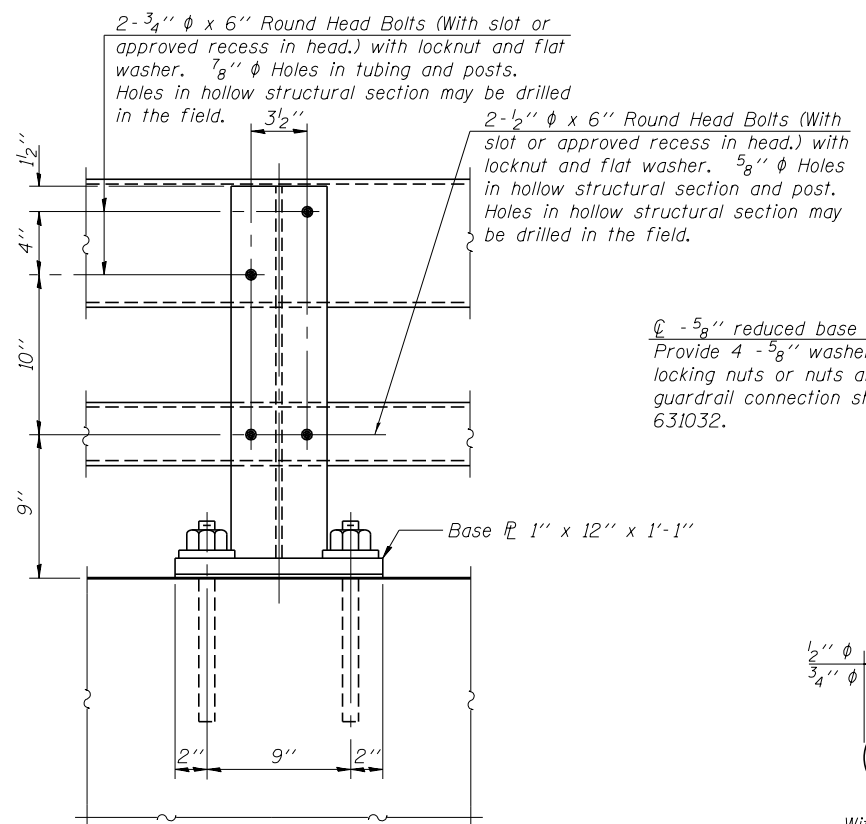
CULVERT DETAILS
 STRUCTURE NO. 083-2022

SHEET NO. 4 OF 6 SHEETS

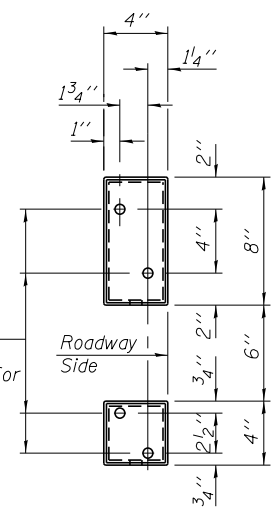
F.A.S. RTE.	SECTION	COUNTY	TOTAL SHEETS	SHEET NO.
899	8B-1	SALINE	33	21
			CONTRACT NO. 78268	
ILLINOIS FED. AID PROJECT				



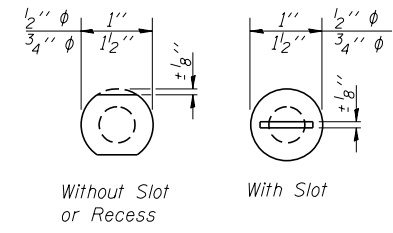
SECTION AT RAIL POST



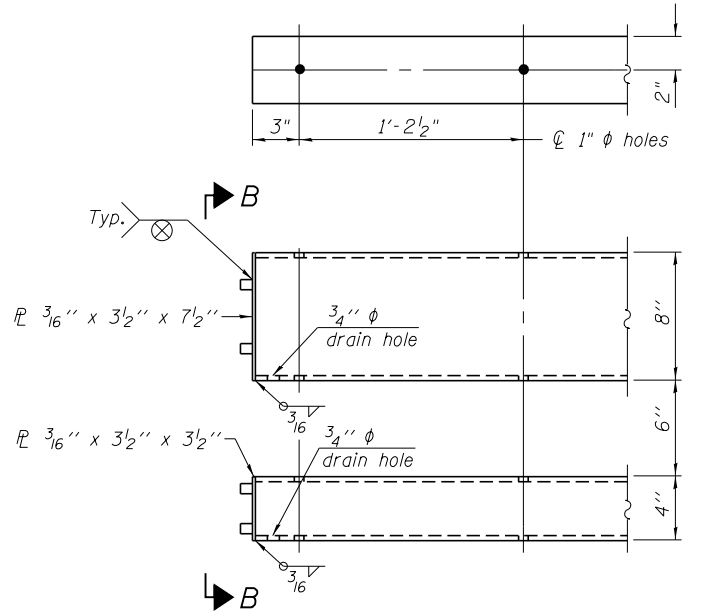
SECTION A-A



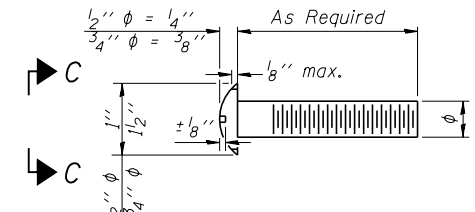
VIEW B-B



VIEW C-C



END OF RAIL DETAILS



DETAIL OF 1/2" & 3/4" ROUND HEAD BOLTS

Notes:
 All field drilled holes shall be coated with an approved zinc rich paint before erection.
 Posts shall not be located closer than 1'-3" to an existing bridge expansion joint or end of bridge.
 Steel Bridge Rail expansion joint shall be provided between any two (2) posts which span a bridge expansion joint. Bolts located at expansion joint shall be provided with locknuts and shall be tightened only to a point that will allow railing movement.
 Provide one 1/8" and two 1/16" steel shims for 25% of the posts. Shims shall be similar to base plates in size and holes.
 All steel rail elements shall be galvanized according to Article 509.05 of the Standard Specifications.
 See Sheet 1 of 6 for rail post spacing.

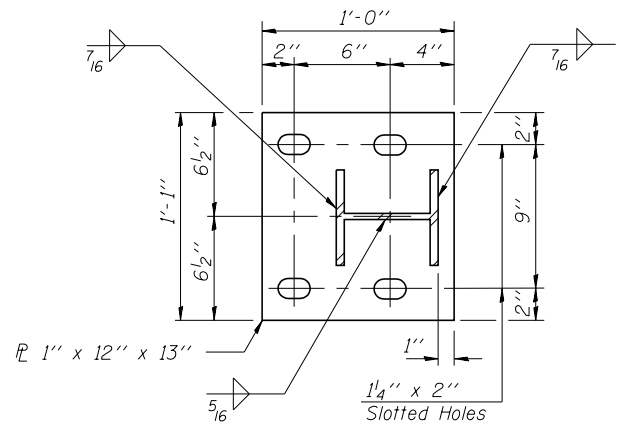
SPLICE DIMENSIONS

T	D	A	B	C	E
≤ 4"	2 1/2"	1'-8"	2"	4"	2 1/2"
> 4" ≤ 6 1/2"	3 3/4"	2'-0"	2 1/2"	5 1/2"	3 1/2"
> 6 1/2" ≤ 9"	5"	2'-4"	3 1/2"	6 1/2"	9"
> 9" ≤ 13"	7"	2'-10"	4 1/2"	8 1/2"	11"
Rail Splice	4"	1'-8"	2"	4"	—

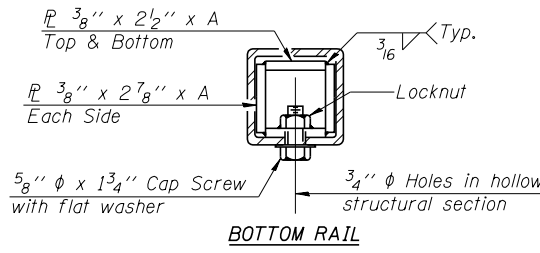
T = Total movement at expansion joint as shown on the design plans.

BILL OF MATERIAL

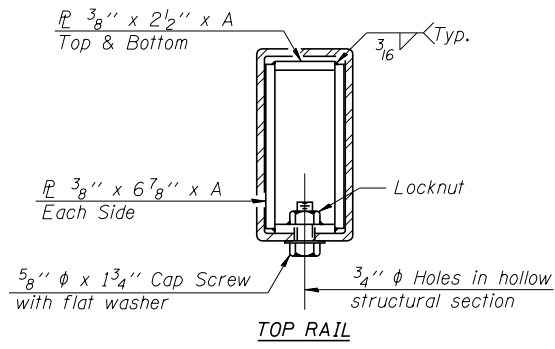
Item	Unit	Quantity
Steel Railing, Type 2399	Foot	46



BASE PLATE DETAIL

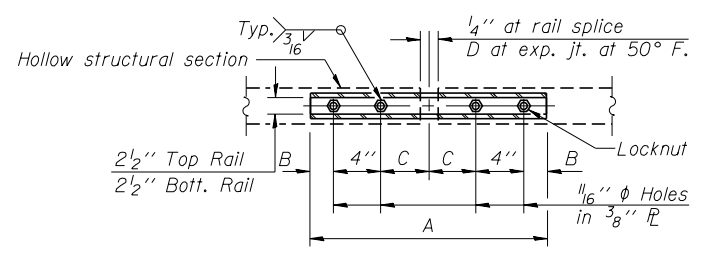


BOTTOM RAIL

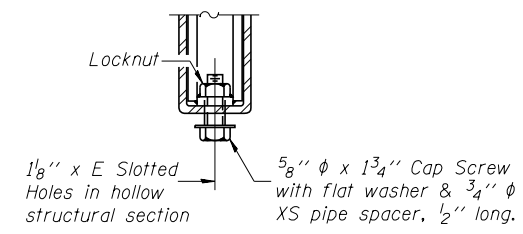


TOP RAIL

SECTIONS AT RAIL SPLICE



PLAN-BOTT. SPLICE R TYPICAL



RAIL SPLICE CONNECTION AT EXPANSION JT.

(6'-3" Maximum Post Spacing)

FILE NAME = ...
 PROJECT NO. 08055-24

Coombe-Bloxdorf P.C.
 CIVIL ENGINEERS
 STRUCTURAL ENGINEERS
 LAND SURVEYORS
 Design Firm License No. 184-002703

USER NAME = *USER*
 DESIGNED - CME
 CHECKED - MCB
 PLOT SCALE = *SCALE*
 DRAWN - MML
 CHECKED - MCB
 PLOT DATE = 1/23/2014

DESIGNED - CME
 CHECKED - MCB
 REVISIONS:
 REVISIONS:
 REVISIONS:
 REVISIONS:

STATE OF ILLINOIS
 DEPARTMENT OF TRANSPORTATION

STEEL RAILING, TYPE 2399
 STRUCTURE NO. 083-2022

SHEET NO. 5 OF 6 SHEETS

F.A.S. RTE. SECTION COUNTY TOTAL SHEETS SHEET NO.
 899 8B-1 SALINE 33 22
 CONTRACT NO. 78268
 ILLINOIS FED. AID PROJECT

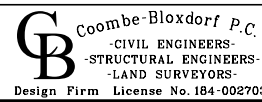
District Nine Materials				Boring Log			
SBI 13A (Od IL Rte 13) Over stream				Sheet 1 of 1			
Re: SBI 13A Structure Number: 083-0049				Date: 8/9/2011			
Section 8B-DR				Bored By: R Moberly			
County: Saline				Checked By: R Graeff			
Location: 0.4 mi W of Carrier Mills Road							
Boring No 1-S	D	B		Surf Wat Elev: 381.6	D	B	
Station 758+63	E	L		Ground Water Elevation	E	L	
Offset 10' Rt CL	P	O		when Drilling	P	O	
Ground Surface 393.1 Ft	T	W	Qu	At Completion	T	W	Qu
	H	S	tsf	At: Hrs:	H	S	tsf
			W%				W%
Asphalt and concrete					35	5.4S	12
391.6					49		
Stiff, moist, grey mottled brown, Silty Clay A-6		2		365.6	35		
		3	1.7B	22	365.1	100/4"	
		3					
388.6							
Stiff, moist to very moist, grey, Silty Clay A-6	5.0	1		Cored 27.9 to 32.9 feet			
		2	1.1B	25	72% Recovery; 0% RQD		
		2			Hard, dry, grey, Clay Shale	30.0	
386.1							
Medium, very moist, grey, Silty Clay A-6		WH					
		1	0.6B	26	360.1		
		1					
		10.0	WH				
		1	0.5B	28	35.0		
		1					
381.1							
Medium, moist, grey, Silty Clay A-6 with rotten wood		2					
		2	0.6B	41	355.1		
		1					
378.6							
Medium to stiff, moist to very moist, grey mottled brown, Clay A7-6	15.0	2					
		2	1.0B	24	40.0		
		3					
375.1							
Stiff, moist, brown mottled grey, Clay to Silty Clay A7-6		1					
		4	1.7B	21	350.1		
		5					
		20.0	2				
		4	1.6B	24	45.0		
		5					
371.1							
Hard, damp, brown and grey, Clay A7-6 to Weathered Clay Shale		9					
		28	4.2S	16			
		47					
		25.0	13		50.0		

N-Std Penr Test: 2" OD Sampler, 140# Hammer, 30" Fall (Type Fall, B-Bulge S-Shear E-Estimated P-Penetrometer)

District Nine Materials				Boring Log			
SBI 13A (Od IL Rte 13) Over stream				Sheet 1 of 1			
Re: SBI 13A Structure Number: 083-0049				Date: 8/11/2011			
Section 8B-DR				Bored By: R Moberly			
County: Saline				Checked By: R Graeff			
Location: 0.4 mi W of Carrier Mills Road							
Boring No 2-S	D	B		Surf Wat Elev: 381.6	D	B	
Station 759+34	E	L		Ground Water Elevation	E	L	
Offset 11' Lt CL	P	O		when Drilling	P	O	
Ground Surface 394.1 Ft	T	W	Qu	At Completion	T	W	Qu
	H	S	tsf	At: Hrs:	H	S	tsf
			W%				W%
Asphalt							
392.6							
Medium, moist, brown, Clay to Silty Clay A7-6		1					
		2	0.9B	22			
		2					
389.6							
Stiff, moist, brown, Silty Clay A-6	5.0	1					
		2	1.8B	22	364.6		
		3					
387.1							
Medium, very moist, brown and grey, Silty Clay A-6		2					
		2	0.8B	26			
		3					
384.6							
Stiff, moist, brown mottled grey, Silty Clay A-6	10.0	2					
		3	1.3B	26	35.0		
		4					
382.1							
Medium, very moist, brown mottled grey, Silty Clay A-6		1					
		3	0.9B	22			
		3					
379.6							
Very stiff, damp to moist, brown and grey, Clay A7-6	15.0	4					
		7	3.5S	15	40.0		
		10					
377.1							
Hard, damp, brown and grey, Clay to Weathered Clay Shale A7-6		8					
		28	5.6S	14			
		40					
		20.0	11				
		43	4.1S	11			
		52					
372.1							
Hard, dry, grey, Clay Shale					100/9"		
369.6							
Test @ 350 psi					25.0		50.0

N-Std Penr Test: 2" OD Sampler, 140# Hammer, 30" Fall (Type Fall, B-Bulge S-Shear E-Estimated P-Penetrometer)

FILE NAME = Resources.dwg
 CB PROJECT NO. 08355-24



USER NAME = *USER*	DESIGNED - CME	REVISED -
PLOT SCALE = *SCALE*	CHECKED - MCB	REVISED -
PLOT DATE = 1/23/2014	DRAWN - MML	REVISED -
	CHECKED - MCB	REVISED -

STATE OF ILLINOIS
 DEPARTMENT OF TRANSPORTATION

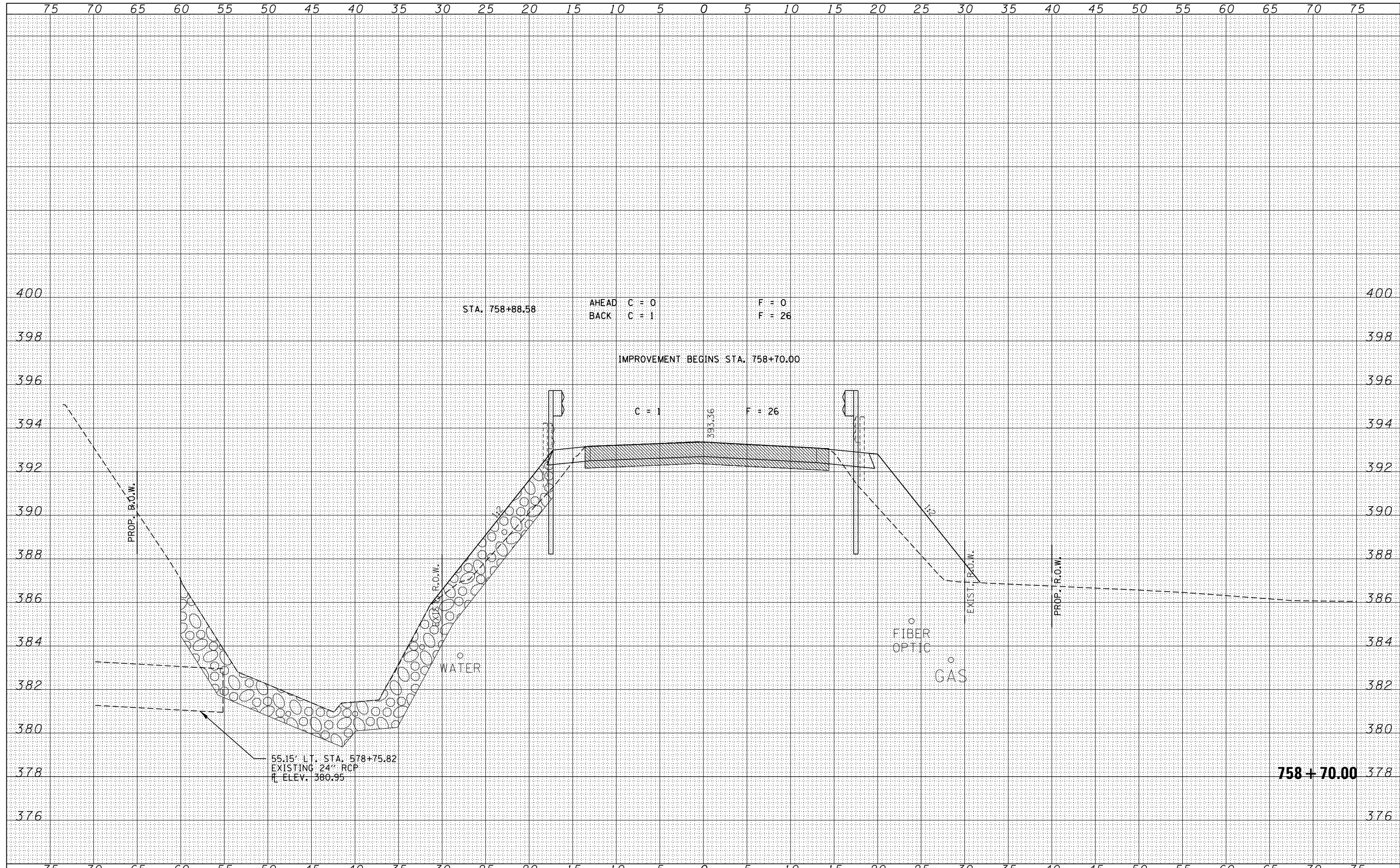
BORING LOGS
 STRUCTURE NO. 083-2022

SHEET NO. 6 OF 6 SHEETS

F.A.S. RTE.	SECTION	COUNTY	TOTAL SHEETS	SHEET NO.
899	8B-1	SALINE	33	23
CONTRACT NO. 78268				
ILLINOIS FED. AID PROJECT				

DATE	
BY	
FINAL SURVEY	
NOTE BOOK NO.	
SURVEYED	
PLOTTED	
TEMPLATE	
AREAS CHECKED	

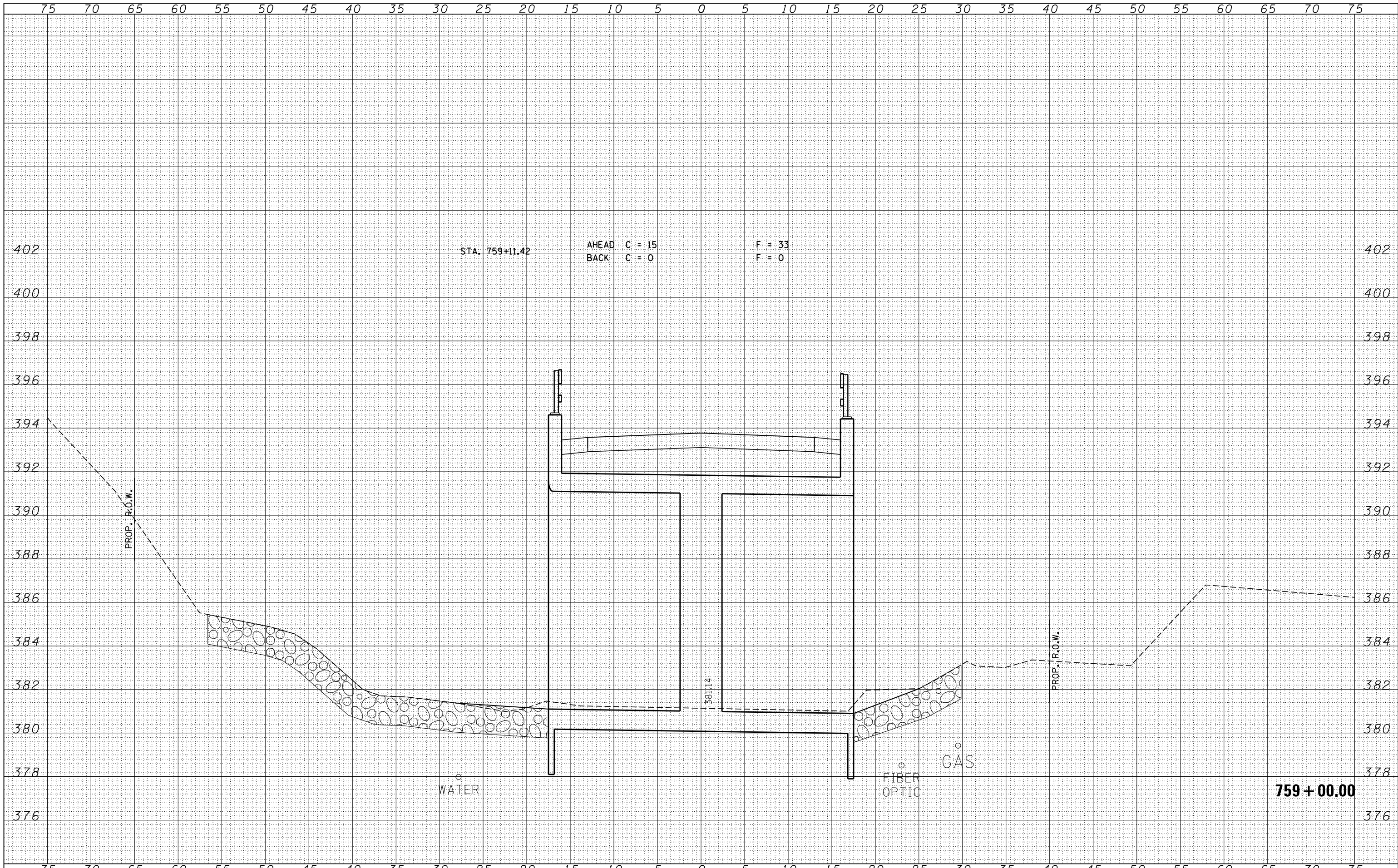
DATE	
BY	
ORIGINAL SURVEY	
NOTE BOOK NO.	
SURVEYED	
PLOTTED	
TEMPLATE	
AREAS CHECKED	



FILE NAME = D978268-sh1-xssht.dgn	USER NAME = *USERS*	DESIGNED - L.F.S.	REVISIED -	STATE OF ILLINOIS DEPARTMENT OF TRANSPORTATION	CROSS SECTIONS OLD IL13			F.A.S.	SECTION	COUNTY	TOTAL SHEETS	SHEET NO.	
HAMPTON, LENZINI AND RENWICK, INC. 3885 STEVENSON DRIVE, SUITE 201 SPRINGFIELD, ILLINOIS 62703 ILLINOIS PROFESSIONAL DESIGN FIRM L8 / PE / SE CORP. 184.000958		DRAWN - T.W.K.	REVISIED -					899	8B-1	SALINE	33	27	
		CHECKED - M.D.C.	REVISIED -		SCALE: 5H:2V			SHEET NO. OF SHEETS		STA. 758+70.00 TO STA. 758+70.00		CONTRACT NO. 78768	
		DATE - 01/14/14	REVISIED -		ILLINOIS FED. AID PROJECT								

DATE	
BY	
FINAL SURVEY	SURVEYED
NOTE BOOK	PLOTTED
NO.	TEMPLATE
	AREAS CHECKED

DATE	
BY	
ORIGINAL SURVEY	SURVEYED
NOTE BOOK	PLOTTED
NO.	TEMPLATE
	AREAS CHECKED



STA. 759+11.42 AHEAD C = 15 F = 33
 BACK C = 0 F = 0

PROP. R.O.W.

PROP. R.O.W.

WATER

FIBER OPTIC GAS

759 + 00.00

FILE NAME = D978268-sht-xxsht.dgn
 HAMPTON, LENZINI AND RENWICK, INC.
 3885 STEVENSON DRIVE, SUITE 201
 SPRINGFIELD, ILLINOIS 62703
 ILLINOIS PROFESSIONAL DESIGN FIRM
 L.S. / P.E. / S.E. CORP. 184-000958

USER NAME = *USERS*
 PLOT SCALE = *SCALE*
 PLOT DATE = 1/23/2014

DESIGNED - L.F.S.
 DRAWN - T.W.K.
 CHECKED - M.D.C.
 DATE - 01/14/14

REVISED -
 REVISED -
 REVISED -
 REVISED -

STATE OF ILLINOIS
 DEPARTMENT OF TRANSPORTATION

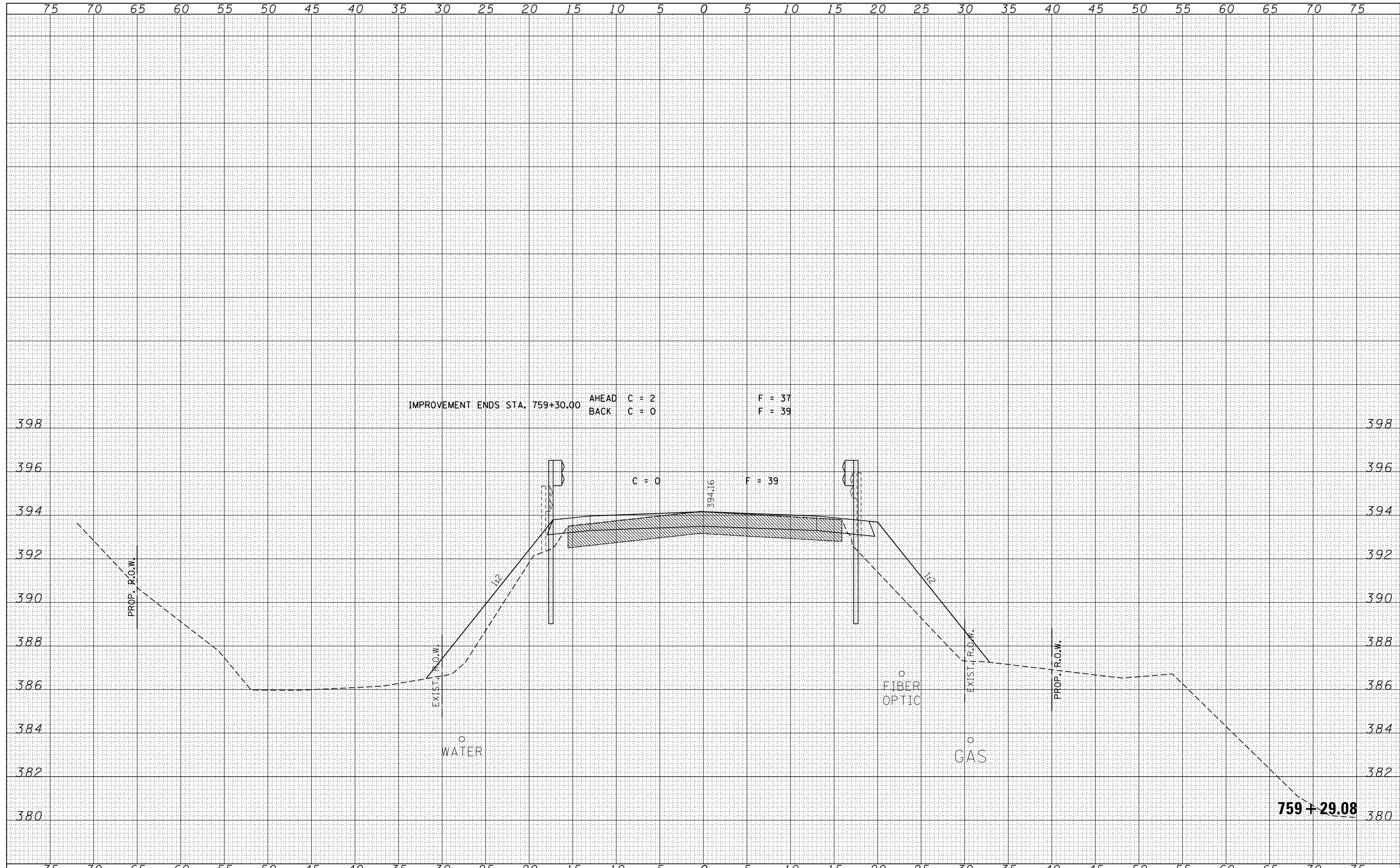
CROSS SECTIONS
 OLD IL13

SCALE: 5H:2V SHEET NO. OF SHEETS STA. 759+00.00 TO STA. 759+00.00

F.A.S.	SECTION	COUNTY	TOTAL SHEETS	SHEET NO.
899	8B-1	SALINE	33	28
CONTRACT NO. 78768			ILLINOIS FED. AID PROJECT	

DATE	
BY	
SURVEYED	
PLOTTED	
TEMPLATE	
AREAS	
CHECKED	
FINAL SURVEY	
NOTE BOOK	
NO.	

DATE	
BY	
SURVEYED	
PLOTTED	
TEMPLATE	
AREAS	
CHECKED	
ORIGINAL SURVEY	
NOTE BOOK	
NO.	



FILE NAME = D978268-sht-xxsht.dgn	USER NAME = *USERS*	DESIGNED - L.F.S.	REVISED -	STATE OF ILLINOIS DEPARTMENT OF TRANSPORTATION	CROSS SECTIONS OLD IL13			F.A.S.	SECTION	COUNTY	TOTAL SHEETS	SHEET NO.
HAMPTON, LENZINI AND RENWICK, INC.		DRAWN - T.W.K.	REVISED -					899	8B-1	SALINE	33	29
3885 STEVENSON DRIVE, SUITE 201 SPRINGFIELD, ILLINOIS 62703 ILLINOIS PROFESSIONAL DESIGN FIRM L.S. / P.E. / S.E. CORP. 184.000958		CHECKED - M.D.C.	REVISED -					CONTRACT NO. 78768				
		DATE - 01/14/14	REVISED -					SCALE: 5H:2V	SHEET NO.	OF SHEETS	STA. 759+29.08 TO STA. 759+29.08	ILLINOIS FED. AID PROJECT

