

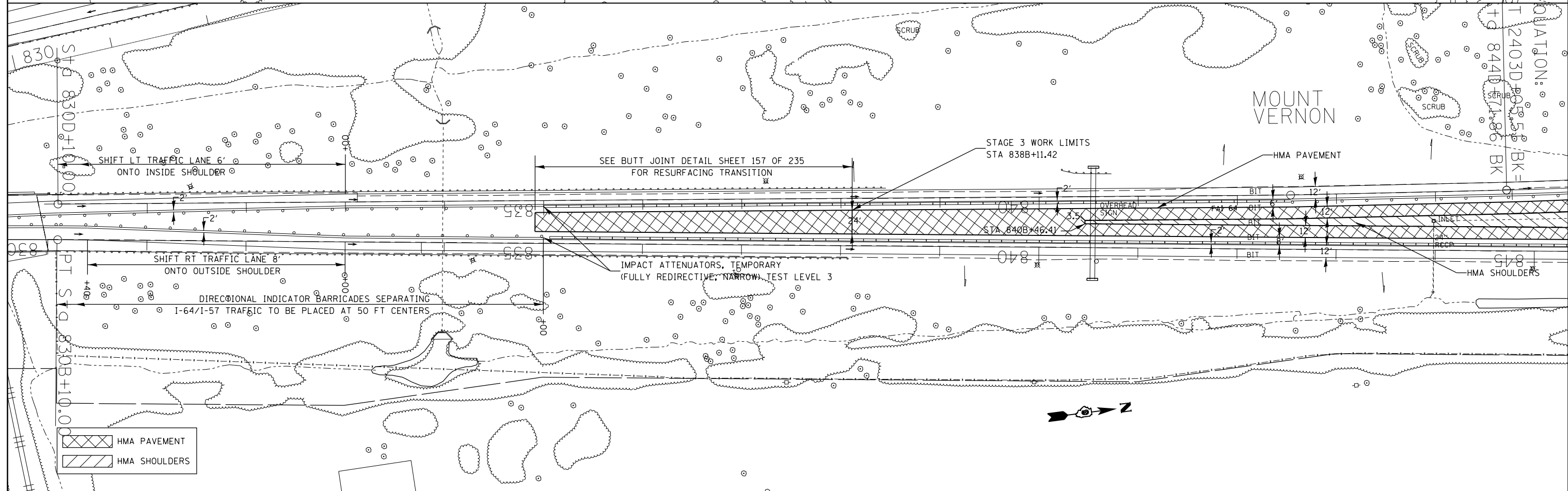
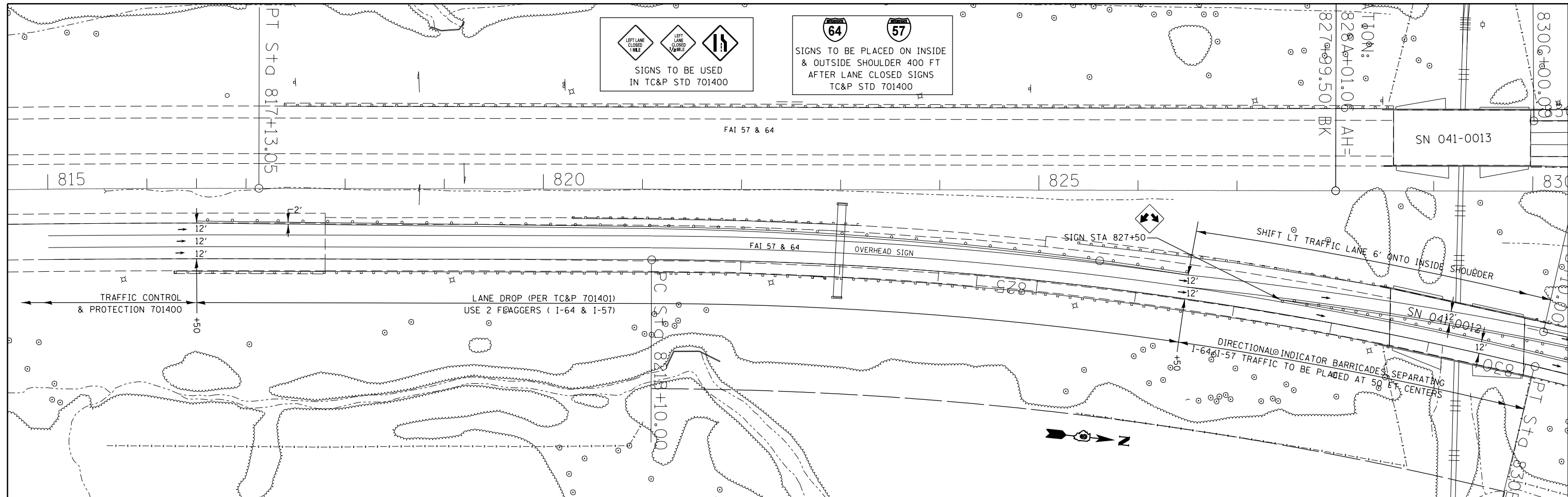



 SIGNS TO BE USED
 IN TC&P STD 701400



 SIGNS TO BE PLACED ON INSIDE
 & OUTSIDE SHOULDER 400 FT
 AFTER LANE CLOSED SIGNS
 TC&P STD 701400



 HMA PAVEMENT
 HMA SHOULDERS

| | | | |
|--|------------------------------|------------|-----------|
| FILE NAME = | USER NAME = rollav | DESIGNED - | REVISED - |
| ei:\pw_work\puidot\rollav\d0278568\7827-shhd-stageconstruction.dgn | | DRAWN - | REVISED - |
| Default | PLOT SCALE = 100.0000' / in. | CHECKED - | REVISED - |
| | PLOT DATE = 2/28/2014 | DATE - | REVISED - |

STATE OF ILLINOIS
DEPARTMENT OF TRANSPORTATION

NB I-57 - STAGE 3
TRAF CONT & PROT SPEC DETAIL
 SCALE: SHEET 4 OF 17 SHEETS STA. 817+80 TO STA. 845B+00

| F.A.I. RTE. | SECTION | COUNTY | TOTAL SHEETS | SHEET NO. |
|---------------------------|---------|-----------|--------------------|-----------|
| .. | . | JEFFERSON | 235 | 104 |
| ILLINOIS FED. AID PROJECT | | | CONTRACT NO. 78276 | |