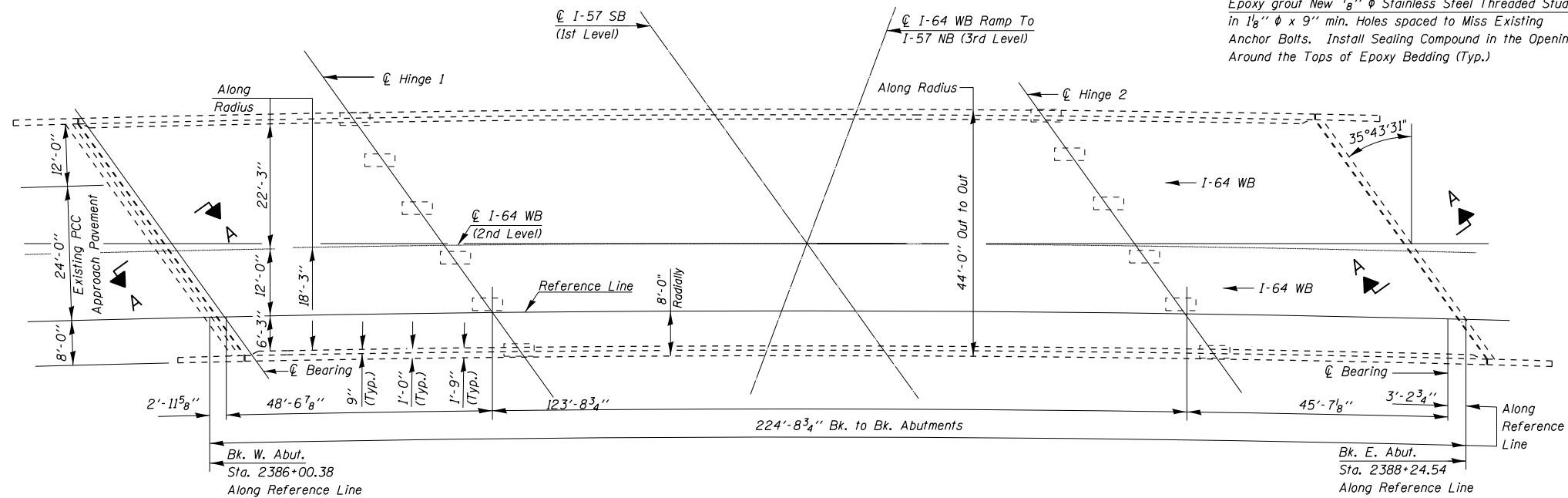


**ELEVATION**



**PLAN**

**GENERAL NOTES**

Continuous Seal Neoprene Expansion Joint shall consist of molded anchor blocks of elastomer and steel, field assembled over continuous lengths of elastomeric membrane.

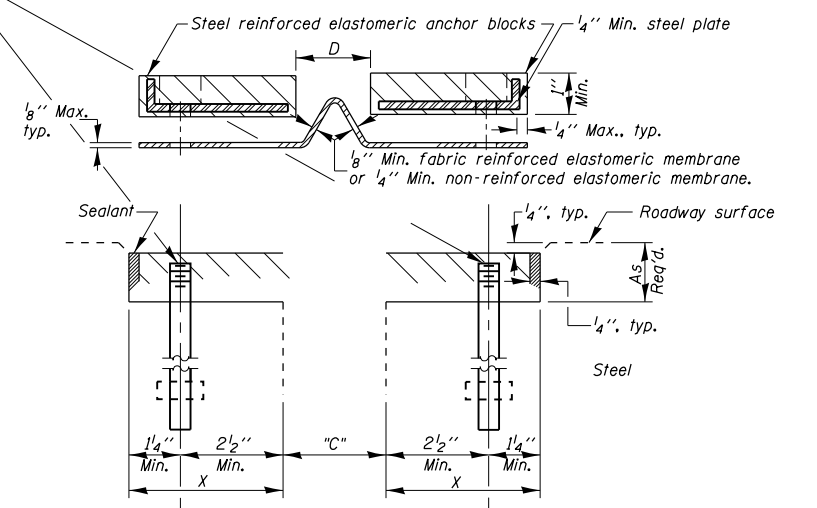
The elastomeric membrane shall be premolded with a single or a double upward convolution that will have a "memory" to return to its molded position upon joint closure.

The convolution length shall be such that the extended length will not be greater than the manufactured length when the joint is fully expanded in its design range and will not protrude above the anchor blocks when the joint is fully compressed.

Joint openings shall be adjusted according to Article 503.10 of the Standard Specifications when the joint is installed at an ambient temperature other than 50° F.

The parapet and roadway membrane shall be made continuous by an approved vulcanizing process. Lapping will not be permitted.

Epoxy grout New 7/8" φ Stainless Steel Threaded Studs in 1 1/8" φ x 9" min. Holes spaced to Miss Existing Anchor Bolts. Install Sealing Compound in the Opening Around the Tops of Epoxy Bedding (Typ.)



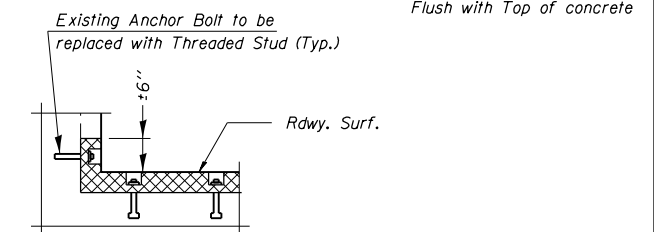
**CROSS SECTION**

**INSTALLATION NOTES**

- ① Install continuous seal in roadway, parapet, curb, and sidewalk.
  - ② Install anchor blocks as indicated.
- NOTE A: Maximum spacing of anchor bolts shall be 12" centers.

Joint Size	"C" at 50°F	"D" at 50°F
2"	2"	1 1/2" Min.

Existing 5/8" φ x 6" Anchor Bolts at 12" cts. Cut Existing Anchors Flush with Top of concrete



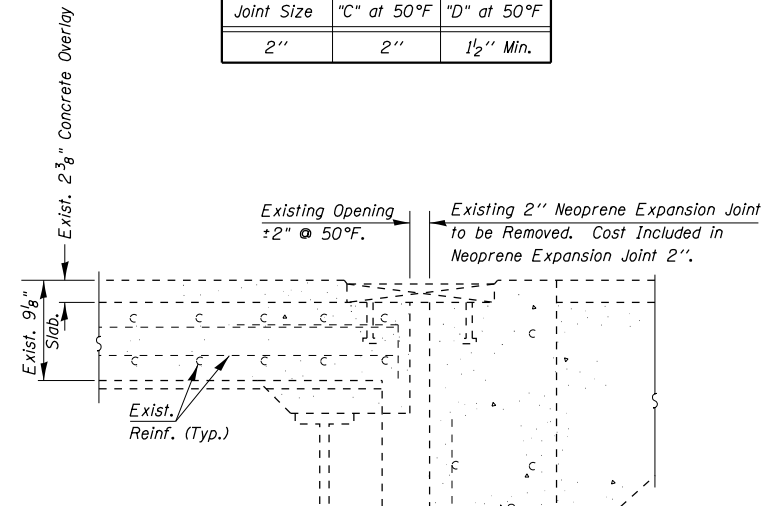
**AT WALL**

**BILL OF MATERIAL**

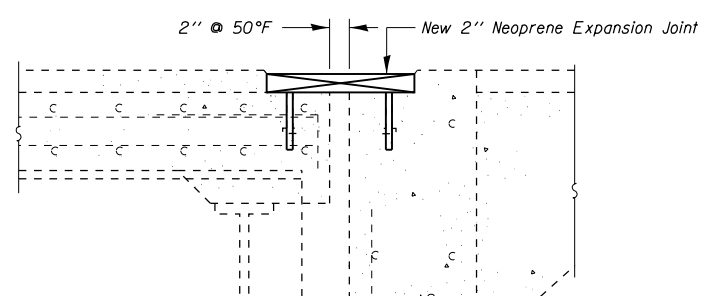
ITEM	UNIT	QUANTITY
Neoprene Expansion Joint 2"	Foot	107
* Bridge Deck Concrete Crack Sealer	Foot	450

\* To be used to seal cracks in the existing concrete overlay. Quantities are estimates. Actual quantity and location to be determined by the Engineer in the field. See Special Provision.

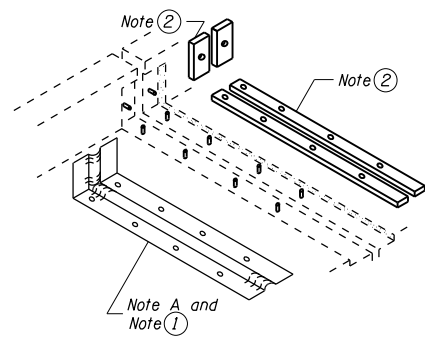
**NEOPRENE JOINT DETAILS**  
**FAI 64 WB OVER FAI 57 SB**  
**JEFFERSON COUNTY**  
**SN 041-0060**



**SECTION A-A (EXISTING)**



**SECTION A-A (PROPOSED)**



**AT WALL**