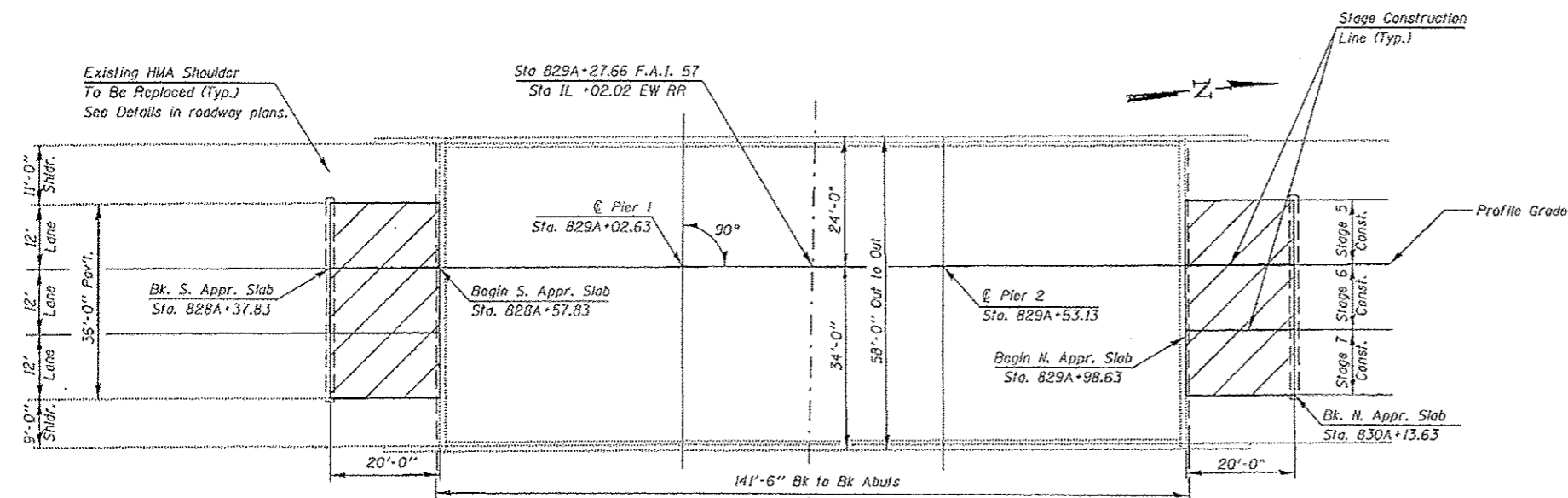


ELEVATION



PLAN

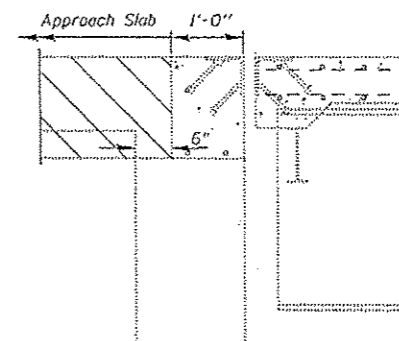
GENERAL NOTES

Plan dimensions and details relative to existing plans are subject to nominal construction variations. The Contractor shall field verify existing dimensions and details affecting new construction and make necessary approved adjustments prior to construction or ordering of materials. Such variations shall not be cause for additional compensation for a change in scope of the work, however, the Contractor will be paid for the quantity actually furnished at the unit price bid for the work.

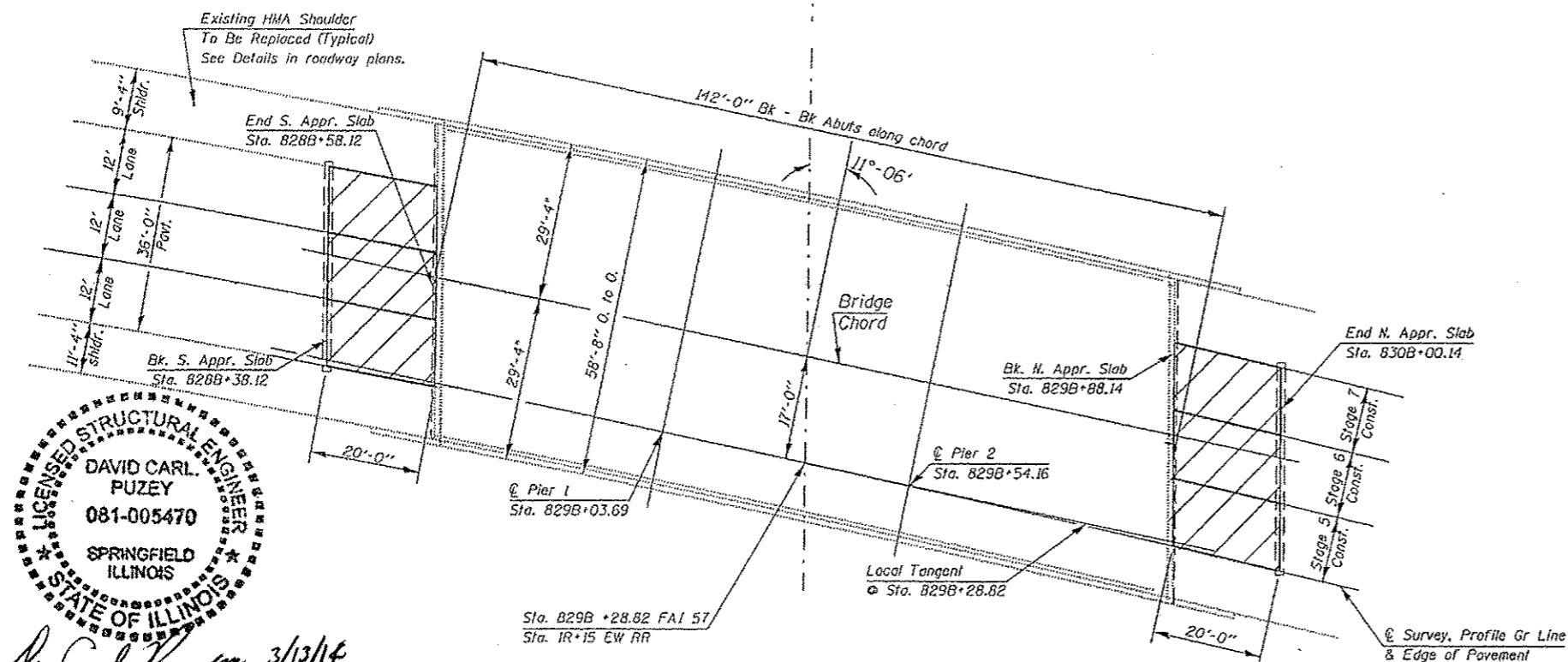
The cost of removing the existing 12" thick bridge approach slab is included with Pavement Removal.

Reinforcement bars designated (E) shall be epoxy coated.

Pavement Removal & Bridge Approach Slab
See Details on Sheet 3 through 6 of 7.



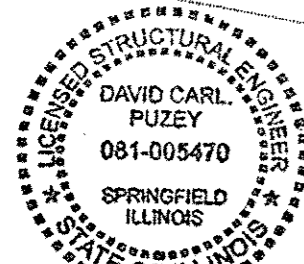
SECTION THRU ABUTMENTS



TOTAL BILL OF MATERIAL

ITEM	UNIT	QUANTITY
Pavement Removal	Sq. Yd.	320
Reinforcement Bars, Epoxy Coated	Pound	35670
Concrete Structures	Cu. Yd.	44.4
Concrete Superstructure	Cu. Yd.	152.1
Bar Splicers	Each	704
Protective Coat	Sq. Yd.	320

**FAI RT 57 OVER
EVANSVILLE WESTERN RAILROAD
JEFFERSON COUNTY
STA 829A+27.66 (SB) & 829B+28.82 (NB)
SN 041-0012 (NB)
SN 041-0013 (SB)**



David Carl Puzey 3/13/14
Expires 11/30/14