

STATE OF ILLINOIS
DEPARTMENT OF TRANSPORTATION
DIVISION OF HIGHWAYS

**PROPOSED
HIGHWAY PLANS**

FAP ROUTE 778 (IL 34)
SECTION 4B-2
HARDIN COUNTY
BOX CULVERT REPLACEMENT
IL 34 OVER TRIBUTARY TO BUCK CREEK
SN 035-7020 (E)
SN 035-7030 (P)

C-99-047-12

PROJECT: ACF-0778 (009)

INDEX OF SHEETS

- 1 COVER SHEET
- 2 GENERAL NOTES, COMMITMENTS, STANDARDS AND SIGNATURES
- 3-5 SUMMARY OF QUANTITIES
- 6 PLAN AND PROFILE
- 7 EROSION CONTROL PLAN
- 8 GUARDRAIL & HMA SHOULDER DETAIL
- 9 ROW SHEET
- 10 LIMITS OF POROUS GRANULAR EMBANKMENT AT SN 035-7020 AND TYPICAL SECTION WITHIN PAVEMENT REMOVAL
- 11 TEMPORARY AND FINAL SECTIONS
- 12 CAST-IN-PLACE CONCRETE APRON END SECTION DETAILS
- 13 CAST-IN-PLACE CONCRETE APRON END SECTION REINFORCEMENT DETAILS
- 14 HALF SIDE ELEVATION
- 15 DISTRICT STANDARDS
- 16-19 CROSS SECTIONS

TRAFFIC DATA

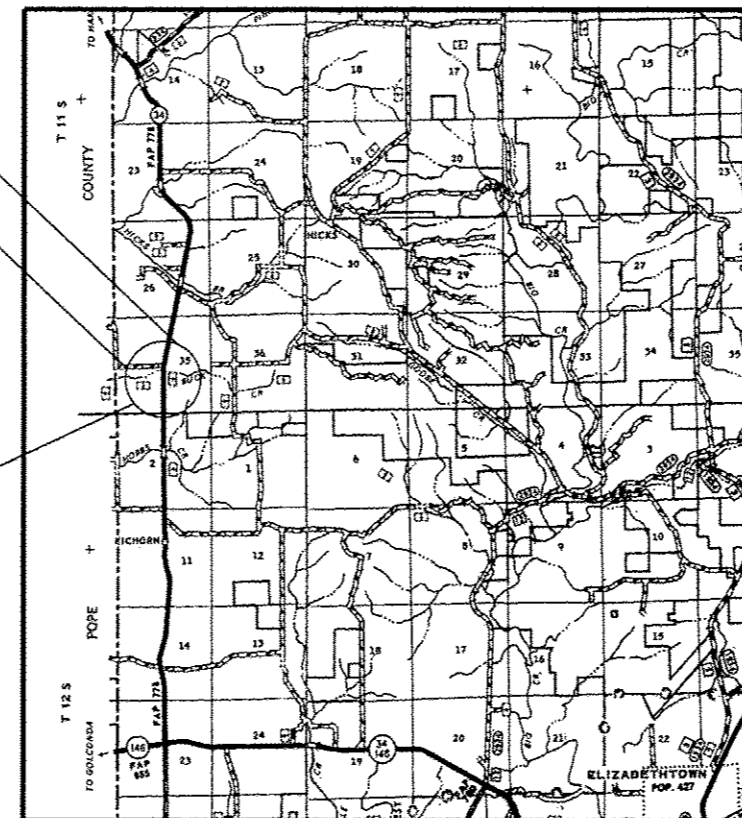
2011 ADT = 2700
33% TRUCKS
POSTED SPEED = 55 MPH

HARDIN COUNTY ROAD DISTRICT #01

J.U.L.I.E.
JOINT UTILITY LOCATION INFORMATION FOR EXCAVATION
1-800-892-0123
OR 811

PROJECT ENGINEER: BILL PORTER
PROJECT MANAGER: DAVID PICHE

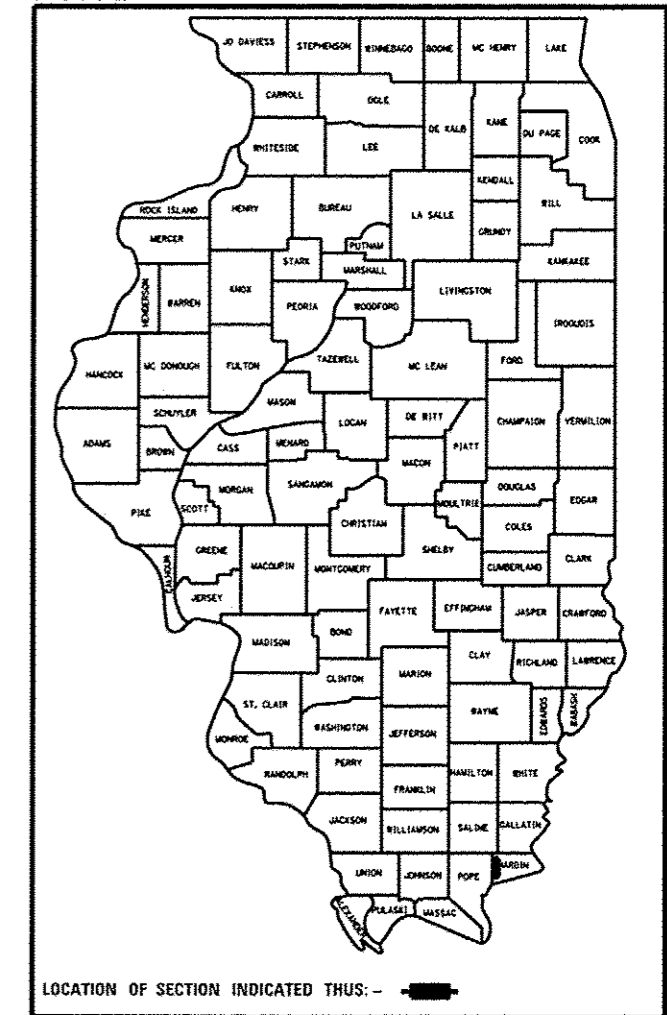
CONTRACT NO. 78316



GROSS LENGTH = 50 FT.
NET LENGTH = 50 FT.

F.A.P. RTE.	SECTION	COUNTY	TOTAL SHEETS	SHEET NO.
778	4B-2	HARDIN	19	1
ILLINOIS CONTRACT NO. 78316				

D-99-040-12



STATE OF ILLINOIS
DEPARTMENT OF TRANSPORTATION
DIVISION OF HIGHWAYS

SUBMITTED Jan 28 20 14

Jeffrey L. Korman
DEPUTY DIRECTOR OF HIGHWAYS, REGION ENGINEER

March 21 20 14
John D. Baranzelli, PE, bc
ENGINEER OF DESIGN AND ENVIRONMENT

March 21 20 14
Omer Osman, PE, bc
DIRECTOR OF HIGHWAYS, CHIEF ENGINEER

**PRINTED BY THE AUTHORITY
OF THE STATE OF ILLINOIS**

GENERAL NOTES

- 1) THE THICKNESS OF HOT-MIX ASPHALT MIXTURE SHOWN ON THE PLANS IS THE NOMINAL THICKNESS. DEVIATIONS FROM THE NOMINAL THICKNESS WILL BE PERMITTED WHEN SUCH DEVIATIONS OCCUR DUE TO IRREGULARITIES IN THE EXISTING SURFACE OR BASE ON WHICH THE HOT-MIX ASPHALT MIXTURE IS PLACED.
- 2) FACTORS USED FOR ESTIMATING PLAN QUANTITIES ARE AS FOLLOWS AND SHALL NOT BE USED FOR THE BASIS OF FINAL QUANTITIES:

ALL HOT MIX ASPHALT	2.016 TONS/CU YD
ALL AGGREGATE	2.05 TONS/CU YD
RIP RAP	1.50 TONS/CU YD
- 3) AT ALL LOCATIONS WHERE EXISTING HOT-MIX ASPHALT OR CONCRETE PAVEMENT JOINS AN EXISTING HOT-MIX ASPHALT OR CONCRETE PAVEMENT, A FULL DEPTH SAWED JOINT SHALL BE CONSTRUCTED. THE COST OF THIS JOINT WILL BE INCLUDED IN THE COST OF THE TYPE OF PAVEMENT BEING CONSTRUCTED.
- 4) THE CONTRACTOR MAY USE HMA PAVEMENT IN LIEU OF THE P.C.C. PAVEMENT 10" SHOWN IN THE PLANS. NO ADDITIONAL COMPENSATION WILL BE ALLOWED. A CALCIUM CHLORIDE ACCELERATOR WILL BE ALLOWED. THE CONCRETE SHALL BE CLASS PP-1 OR PP-2 PER ARTICLE 1020 OF THE STANDARD SPECS.
- 5) REMOVAL OF EXISTING AGGREGATE SHOULDERS SHALL BE INCLUDED IN THE COST OF EARTH EXCAVATION.

STANDARDS

- | | |
|-----------|---|
| 000001-06 | STANDARD SYMBOLS, ABBREVIATIONS AND PATTERNS |
| 001001-02 | AREAS OF REINFORCEMENT BARS |
| 001006 | DECIMAL OF AN INCH AND OF A FOOT |
| 420001-07 | PAVEMENT JOINTS |
| 420601-05 | 24' PCC PAVEMENT |
| 420701-02 | PAVEMENT FABRIC |
| 630301-06 | SHOULDER WIDENING FOR TYPE I (SPECIAL) GUARDRAIL TERMINALS |
| 635006-03 | REFLECTOR AND TERMINAL MARKER PLACEMENT |
| 635011-02 | REFLECTOR MARKER AND MOUNTING DETAILS |
| 642006 | SHOULDER RUMBLE STRIPS, 8 In. |
| 701001-02 | OFF-RD OPERATIONS, 2L, 2W, MORE THAN 15' AWAY |
| 701006-05 | OFF-RD OPERATIONS, 2L, 2W, 15' TO 24" FROM PAVEMENT EDGE |
| 701201-04 | LANE CLOSURE, 2L, 2W, DAY ONLY, FOR SPEEDS > 45 MPH |
| 701901-03 | TRAFFIC CONTROL DEVICES |
| 780001-04 | TYPICAL PAVEMENT MARKINGS |
| BLR 21-9 | TYPICAL APPLICATION OF TRAFFIC CONTROL DEVICES FOR CONSTRUCTION ON RURAL LOCAL HIGHWAYS |

COMMITMENTS

THE HARDIN COUNTY SHERIFF'S DEPARTMENT (618-287-2271) SHALL BE CONTACTED PRIOR TO THE 2 WEEK NOTIFICATION SIGNING AND PRIOR TO ANY WORK INVOLVING TRAFFIC CONTROL AND PROTECTION THAT AFFECTS THE TRAVELING PUBLIC.

MIXTURE REQUIREMENTS

LOCATION(S):	HOT-MIX ASPHALT SURFACE COURSE
MIXTURE USE(S):	HOT-MIX ASPHALT SURFACE COURSE, MIX C, N90
AC/PG:	PG64-22
ABR % (MAX):	SEE BDE SPECIAL PROVISION
DESIGN AIR VOIDS:	4.0%, 90 GYRATION DESIGN
MIXTURE COMPOSITION (GRADATION MIXTURE):	IL-9.5mm
FRICTION AGGREGATE:	C SURFACE
QUALITY MANAGEMENT PROGRAM:	OC/OA

LOCATION(S):	HOT-MIX ASPHALT BINDER COURSE & HOT-MIX ASPHALT SHOULDERS
MIXTURE USE(S):	HOT-MIX ASPHALT BINDER COURSE, N90, IL-19.0mm FINE GRADE
AC/PG:	PG64-22
ABR % (MAX):	SEE BDE SPECIAL PROVISION
DESIGN AIR VOIDS:	4.0%, 90 GYRATION DESIGN
MIXTURE COMPOSITION (GRADATION MIXTURE):	IL-19.0mm FINE GRADE
FRICTION AGGREGATE:	NONE
QUALITY MANAGEMENT PROGRAM:	OC/OA

Prepared By:	<i>Ane Z. Prokiewicz</i> DISTRICT STUDIES & PLANS ENGINEER
Examined By:	<i>[Signature]</i> DISTRICT LAND ACQUISITION ENGINEER
Examined By:	<i>[Signature]</i> DISTRICT PROGRAM DEVELOPMENT ENGINEER
Examined By:	<i>[Signature]</i> DISTRICT OPERATIONS ENGINEER
Examined By:	<i>[Signature]</i> DISTRICT PROJECT IMPLEMENTATION ENGINEER
Examined By:	<i>[Signature]</i> DISTRICT CONSTRUCTION ENGINEER
Examined By:	<i>[Signature]</i> DISTRICT MATERIALS ENGINEER

SUMMARY OF QUANTITIES - CONT

CODE NUMBER	ITEM DESCRIPTION	UNIT	CONSTRUCTION TYPE CODE: 0040 FUNDING: 80% FED 20% STATE
28200200	FILTER FABRIC	SQ YD	442
42000500	PORTLAND CEMENT CONCRETE PAVEMENT 10"	SQ YD	134
42001200	PAVEMENT FABRIC	SQ YD	134
44000100	PAVEMENT REMOVAL	SQ YD	134
48203029	HOT-MIX ASPHALT SHOULDERS, 8"	SQ YD	217
50102400	CONCRETE REMOVAL	CU YD	73.2
50800205	REINFORCEMENT BARS, EPOXY COATED	POUND	1840
54003000	CONCRETE BOX CULVERTS	CU YD	34.8
54011208	PRECAST CONCRETE BOX CULVERTS 12' X 8'	FOOT	50
* 63000001	STEEL PLATE BEAM GUARDRAIL, TYPE A, 6 FOOT POSTS	FOOT	125
* 63000025	STEEL PLATE BEAM GUARDRAIL, ATTACHED TO STRUCTURES	FOOT	31.25
* 63100167	TRAFFIC BARRIER TERMINAL, TYPE 1 (SPECIAL) TANGENT	EACH	4
63200310	GUARDRAIL REMOVAL	FOOT	286
66600105	FURNISHING AND ERECTING RIGHT OF WAY MARKERS	EACH	8

* SPECIALTY ITEM

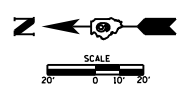
FILE NAME :	USER NAME : portersu	DESIGNED -	REVISED -	STATE OF ILLINOIS DEPARTMENT OF TRANSPORTATION	SUMMARY OF QUANTITIES	F.A.P. RTE.	SECTION	COUNTY	TOTAL SHEETS	SHEET NO.
g:\p-work\pedit\porter\03227201783	D-shiplandgn	DRAWN -	REVISED -			778	4B-2	HARDIN	19	4
Defaults	PLOT SCALE = 100.0000 1/2 in.	CHECKED -	REVISED -		SCALE:	SHEET	OF	SHEETS	STA.	TO STA.
	PLOT DATE = 1/28/2014	DATE -	REVISED -							
ILLINOIS FED. AID PROJECT CONTRACT NO. 78316										

SUMMARY OF QUANTITIES - CONT

CODE NUMBER	ITEM DESCRIPTION	UNIT	CONSTRUCTION TYPE CODE: 0040 FUNDING: 80% FED 20% STATE
67100100	MOBILIZATION	L SUM	1
70100450	TRAFFIC CONTROL AND PROTECTION, STANDARD 701201	L SUM	1
70101830	TRAFFIC CONTROL AND PROTECTION, STANDARD BLR 21	L SUM	1
70103815	TRAFFIC CONTROL SURVEILLANCE	CAL DA	4
70106800	CHANGEABLE MESSAGE SIGN	CAL MO	2
70300220	TEMPORARY PAVEMENT MARKING - LINE 4"	FOOT	120
* 78001110	PAINT PAVEMENT MARKING - LINE 4"	FOOT	120
* 78100100	RAISED REFLECTIVE PAVEMENT MARKER	EACH	1
* 78200410	GUARDRAIL MARKERS, TYPE A	EACH	4
* 78201000	TERMINAL MARKER - DIRECT APPLIED	EACH	4
78300200	RAISED REFLECTIVE PAVEMENT MARKER REMOVAL	EACH	1

*
*
*
*

* SPECIALTY ITEM



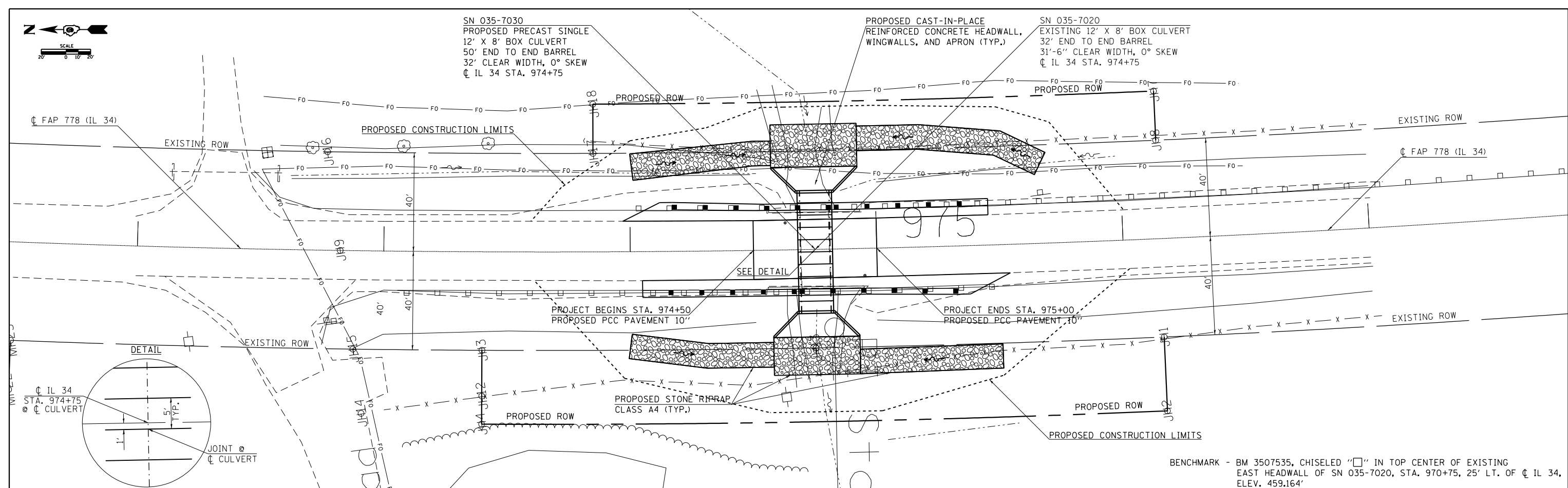
SN 035-7030
 PROPOSED PRECAST SINGLE
 12' X 8' BOX CULVERT
 50' END TO END BARREL
 32' CLEAR WIDTH, 0° SKEW
 @ IL 34 STA. 974+75

PROPOSED CAST-IN-PLACE
 REINFORCED CONCRETE HEADWALL,
 WINGWALLS, AND APRON (TYP.)

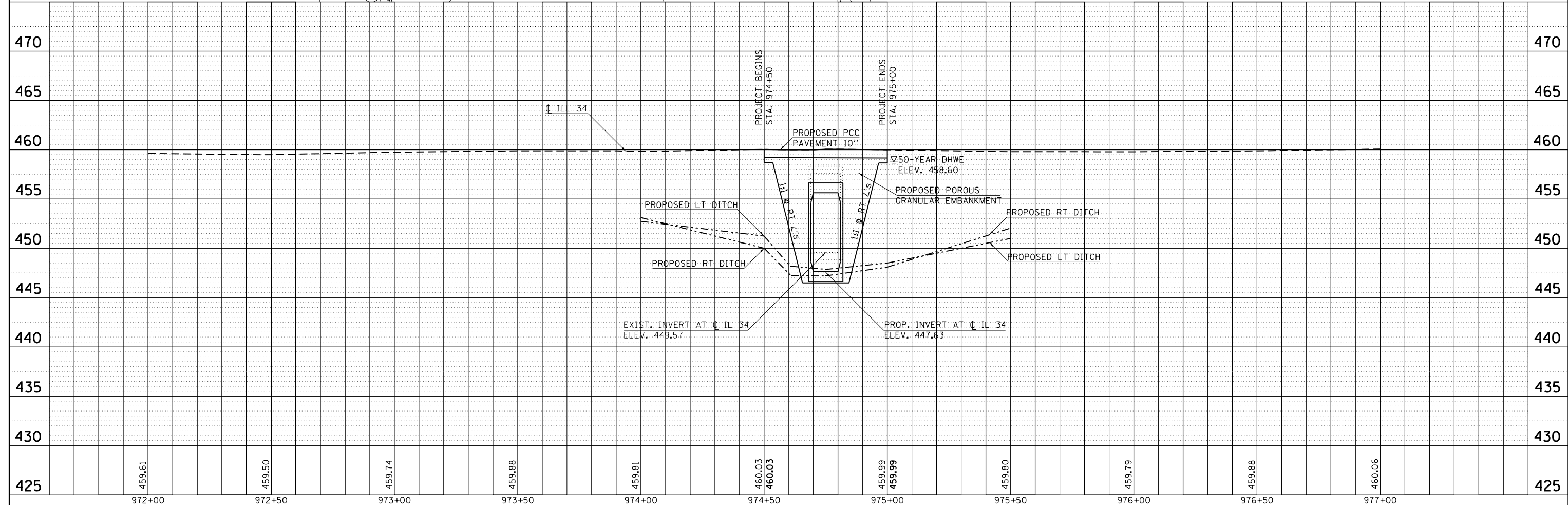
SN 035-7020
 EXISTING 12' X 8' BOX CULVERT
 32' END TO END BARREL
 31'-6" CLEAR WIDTH, 0° SKEW
 @ IL 34 STA. 974+75

DATE	
BY	
PLAN	
SURVEYED	
PLOTTED	
NOTE BOOK	
NO.	
ALIGNED	
CHECKED	
FILE NAME	

DATE	
BY	
PROFILE	
SURVEYED	
PLOTTED	
NOTE BOOK	
NO.	
GRADES CHECKED	
STRUCTURE	
NOTATIONS	
CPAD	

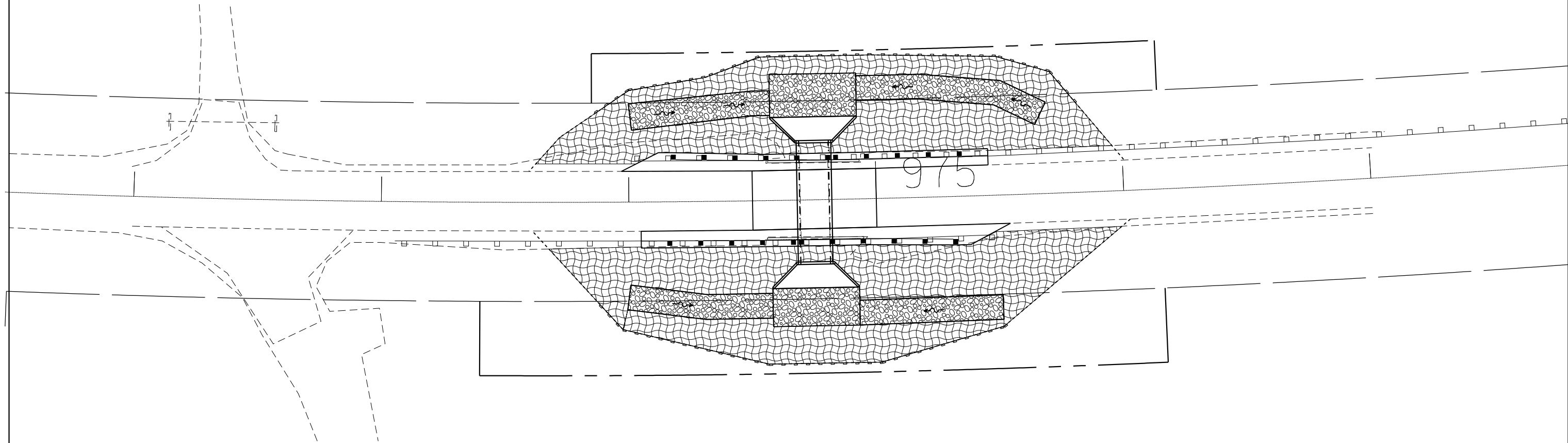
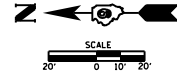


BENCHMARK - BM 3507535, CHISELED "□" IN TOP CENTER OF EXISTING EAST HEADWALL OF SN 035-7020, STA. 970+75, 25' LT. OF @ IL 34, ELEV. 459.164'



FILE NAME =	USER NAME = portercw	DESIGNED -	REVISED -	STATE OF ILLINOIS DEPARTMENT OF TRANSPORTATION	PLAN & PROFILE				F.A.P. RTE.	SECTION	COUNTY	TOTAL SHEETS	SHEET NO.
c:\pwork\pwork\portercw\d0322720\78316\sh-1-plan.dgn		DRAWN -	REVISED -		778	4B-2	HARDIN	19	6				
Default		CHECKED -	REVISED -		SCALE: SHEET OF SHEETS STA. TO STA.				CONTRACT NO. 78316				
		DATE -	REVISED -		ILLINOIS FED. AID PROJECT								

EROSION CONTROL PLAN



EROSION CONTROL BLANKET



PERIMETER EROSION BARRIER

FILE NAME =	USER NAME = porterw	DESIGNED -	REVISED -
c:\pw\work\p\idot\porterw\id0322720\78316-sht-plan.dgn		DRAWN -	REVISED -
Default	PLOT SCALE = 40.0000' / in.	CHECKED -	REVISED -
	PLOT DATE = 1/28/2014	DATE -	REVISED -

STATE OF ILLINOIS
DEPARTMENT OF TRANSPORTATION

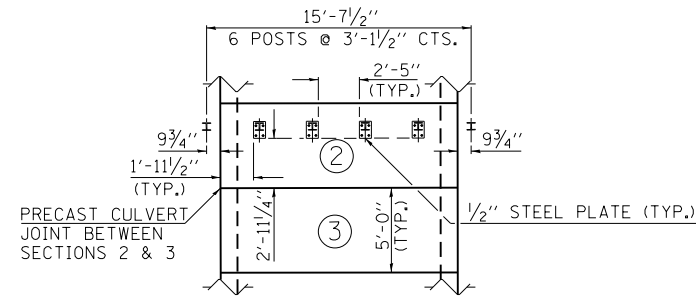
EROSION CONTROL PLAN

SCALE: SHEET OF SHEETS STA. TO STA.

F.A.P. RTE.	SECTION	COUNTY	TOTAL SHEETS	SHEET NO.
778	4B-2	HARDIN	19	7
				CONTRACT NO. 78316
ILLINOIS FED. AID PROJECT				

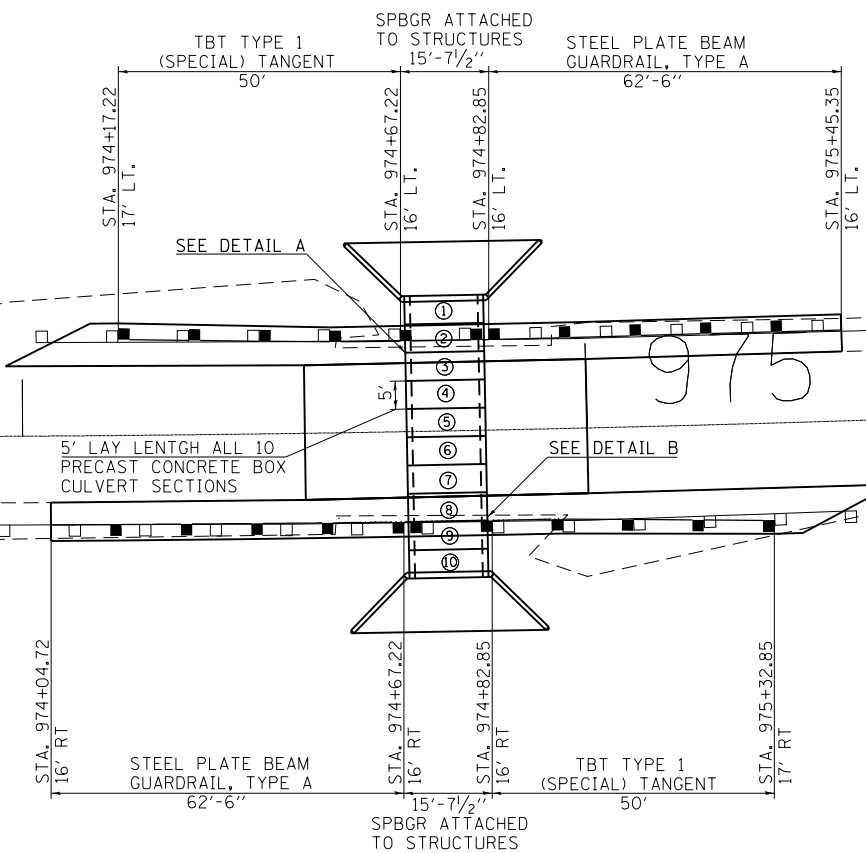


DETAIL A
(WORK WITH STANDARD 630101-09, CASE IV)

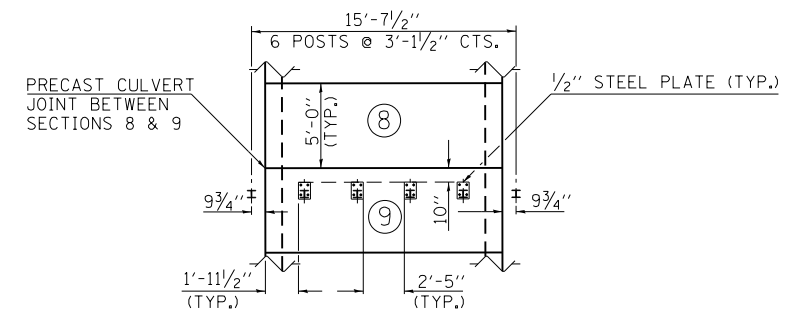


GUARDRAIL DETAIL

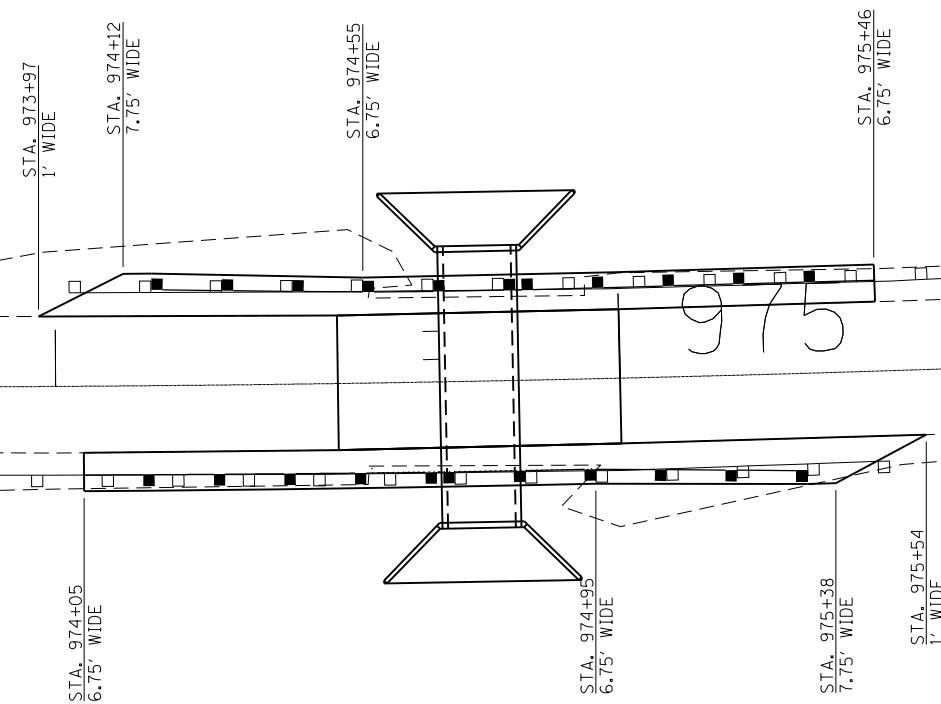
NOTE: THE HOLES FOR INSERTS IN THE TOP SLAB OF PROPOSED PRECAST BOX CULVERT SECTIONS ② AND ③ SHALL BE CAST INTO THE TOP SLAB AT THE PRECAST CONCRETE PLANT. THE HOLES FOR INSERTS SHALL BE AS SHOWN IN STANDARD 630101-09, CASE IV.



DETAIL B
(WORK WITH STANDARD 630101-09, CASE IV)



HMA SHOULDER DETAIL



FILE NAME =	USER NAME = porterc	DESIGNED -	REVISED -
ci:\pw\work\pwidot\porterc\10322720\78316-sht-plan.dgn		DRAWN -	REVISED -
Default		CHECKED -	REVISED -
	PLOT DATE = 1/28/2014	DATE -	REVISED -

STATE OF ILLINOIS
DEPARTMENT OF TRANSPORTATION

GUARDRAIL & HMA SHOULDER DETAIL

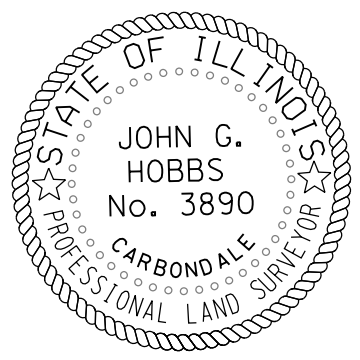
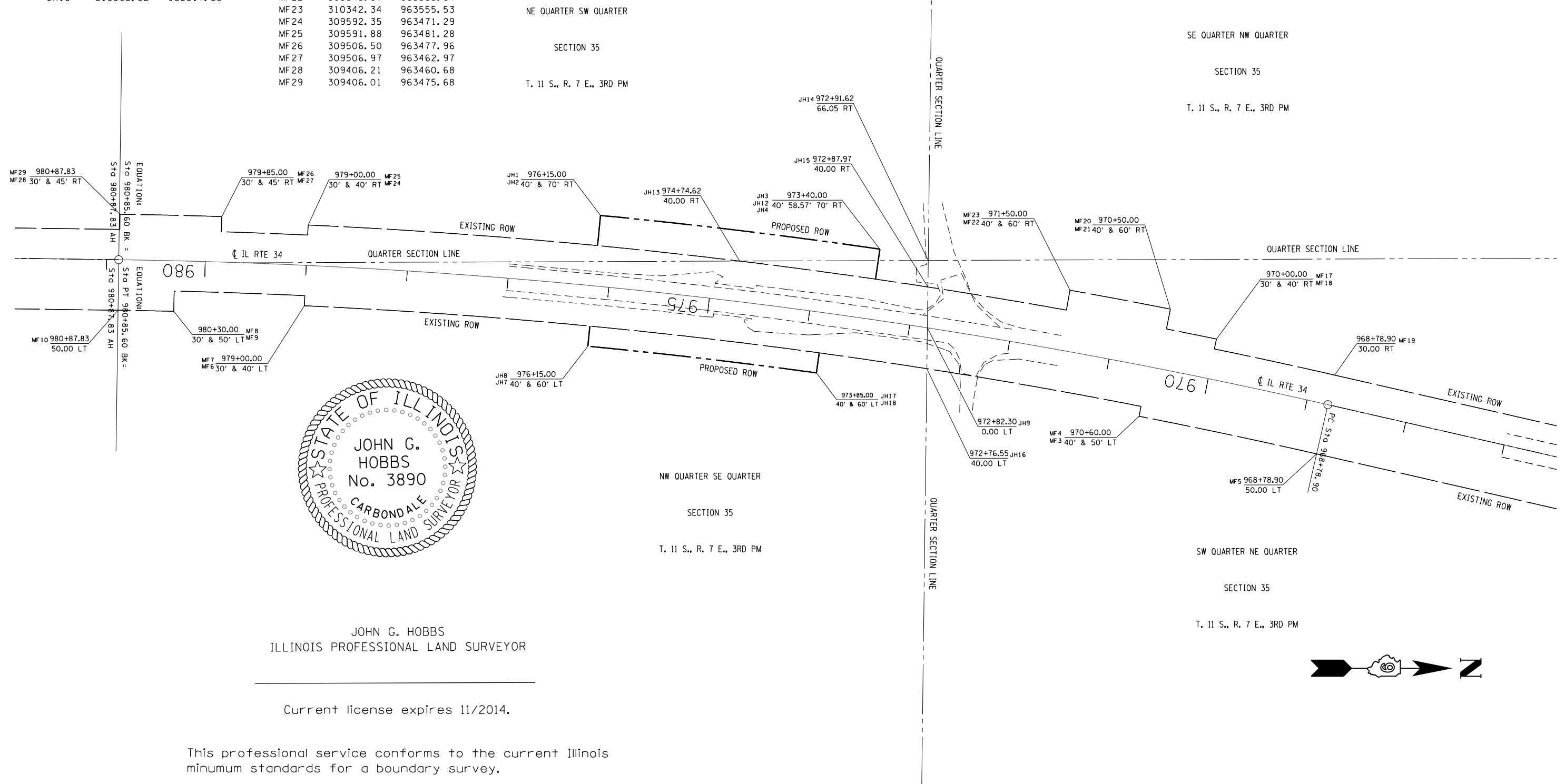
SCALE: SHEET OF SHEETS STA. TO STA.

F.A.P. RTE.	SECTION	COUNTY	TOTAL SHEETS	SHEET NO.
778	4B-2	HARDIN	19	8
CONTRACT NO. 78316				
ILLINOIS FED. AID PROJECT				

PT#	NORTHING	EASTING
JH1	309878.58	963491.70
JH2	309881.46	963461.84
JH3	310153.48	963524.89
JH4	310157.79	963495.21
JH7	309868.99	963591.24
JH8	309870.91	963571.33
JH9	310204.79	963573.06
JH12	310156.15	963506.52
JH13	310019.12	963507.00
JH14	310205.62	963506.35
JH15	310205.30	963532.66
JH16	310204.29	963613.47
JH17	310097.74	963597.82
JH18	310095.02	963617.63

PT#	NORTHING	EASTING
MF3	310414.14	963660.55
MF4	310416.06	963650.74
MF5	310589.74	963967.80
MF6	309588.65	963551.20
MF7	309589.11	963541.21
MF8	309459.87	963536.70
MF9	309459.40	963556.70
MF10	309404.29	963555.67
MF17	310488.62	963593.93
MF18	310490.65	963584.14
MF19	310607.57	963619.81
MF20	310441.30	963574.17
MF21	310445.17	963554.55
MF22	310345.87	963535.84
MF23	310342.34	963555.53
MF24	309592.35	963471.29
MF25	309591.88	963481.28
MF26	309506.50	963477.96
MF27	309506.97	963462.97
MF28	309406.21	963460.68
MF29	309406.01	963475.68

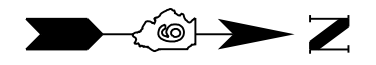
PARCEL	PROPERTY OWNER	PURPOSE	ACREAGE
191	DONALD D. & STEPHANIE VAUGHN	ROW	0.133
192	LLOYD D. & PEGGY L. HOGG	ROW	0.163



JOHN G. HOBBS
ILLINOIS PROFESSIONAL LAND SURVEYOR

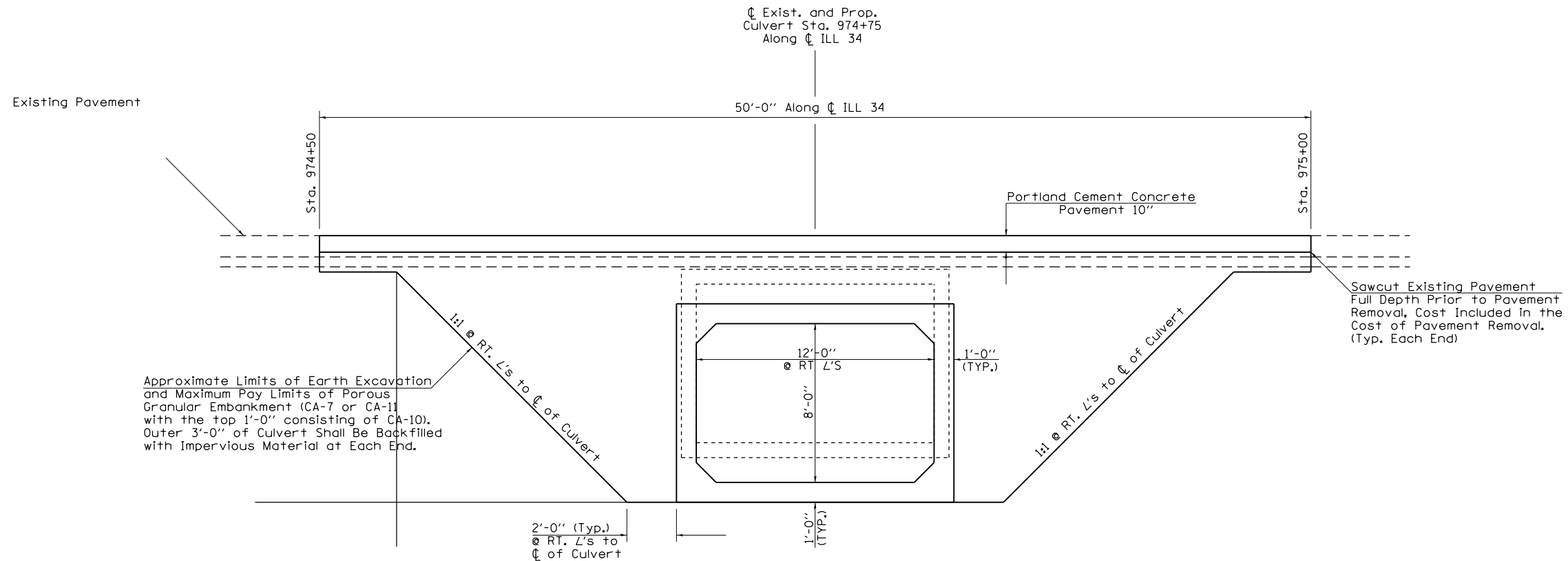
Current license expires 11/2014.

This professional service conforms to the current Illinois minimum standards for a boundary survey.

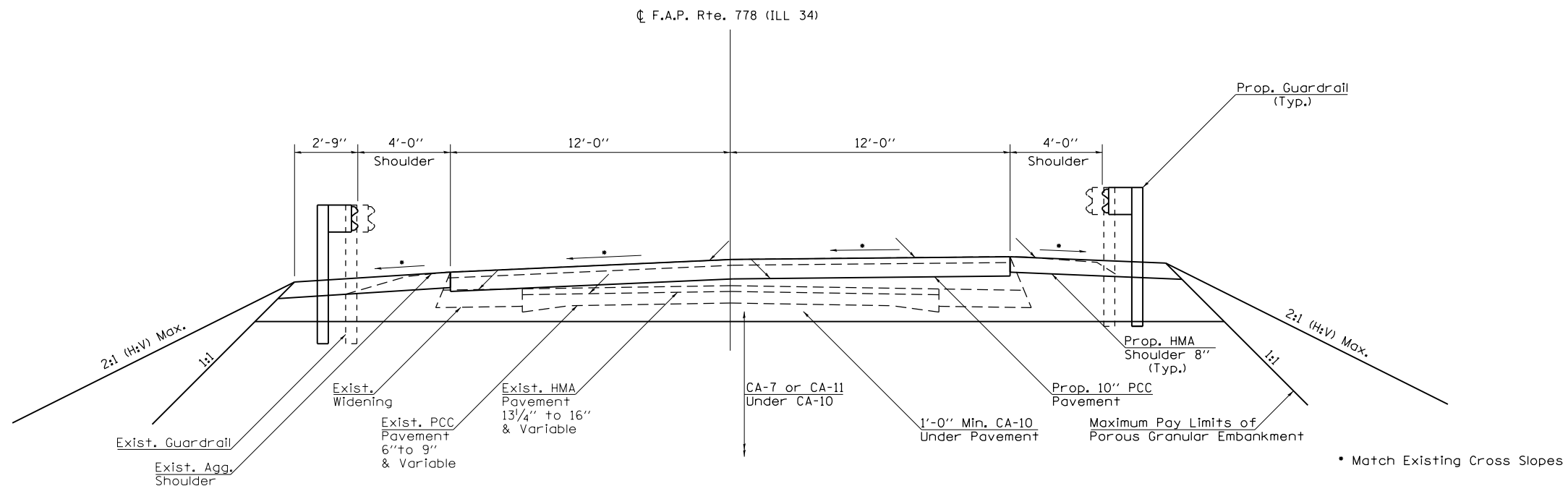


FILE NAME =	USER NAME = portercw	DESIGNED -	REVISED -	STATE OF ILLINOIS DEPARTMENT OF TRANSPORTATION	R-99-016-12/SN0035-7020 RIGHT OF WAY PLAN	F.A. RTE.	SECTION	COUNTY	TOTAL SHEETS	SHEET NO.	
Default	6-sht-row.dgn	DRAWN -	REVISED -			IL 34	4B-2	HARDIN	19	9	
	PLOT SCALE = 100.0000' / in.	CHECKED -	REVISED -			CONTRACT NO. 78316					
	PLOT DATE = 1/28/2014	DATE -	REVISED -			ILLINOIS FED. AID PROJECT					

LIMITS OF POROUS GRANULAR EMBANKMENT



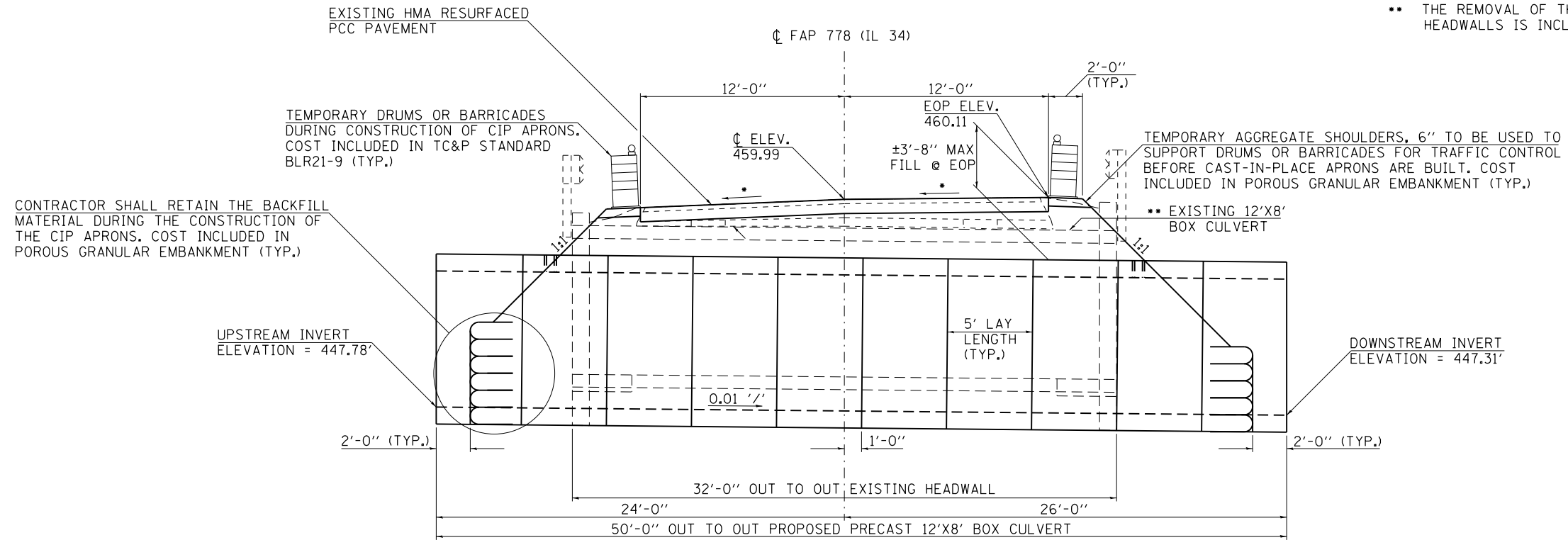
TYPICAL SECTION WITHIN PAVEMENT REMOVAL



FILE NAME =	USER NAME = porterc	DESIGNED -	REVISED -	STATE OF ILLINOIS DEPARTMENT OF TRANSPORTATION	LIMITS OF POROUS GRANULAR EMBANKMENT AT SN 035-7030 AND SECTION WITHIN PAVEMENT REMOVAL	F.A.P. RTE.	SECTION	COUNTY	TOTAL SHEETS	SHEET NO.	
ct:\pwork\pwork\porterc\10322720\78316-sht-plan.dgn	PLOT SCALE = 20.0000' / in.	DRAWN -	REVISED -			778	4B-2	HARDIN	19	10	
Default	PLOT DATE = 1/28/2014	CHECKED -	REVISED -			CONTRACT NO. 78316					
		DATE -	REVISED -			ILLINOIS FED. AID PROJECT					

MINIMUM REQUIREMENTS TO OPEN TO TRAFFIC

- MATCH EXISTING CROSS SLOPES
- THE REMOVAL OF THE EXISTING BOX CULVERT AND HEADWALLS IS INCLUDED IN THE COST OF CONCRETE REMOVAL.



ELEVATION
(LOOKING UPSTATION)

NOTE: ALL HORIZONTAL DIMENSIONS SHOWN @ RT. L'S TO CL IL 34.

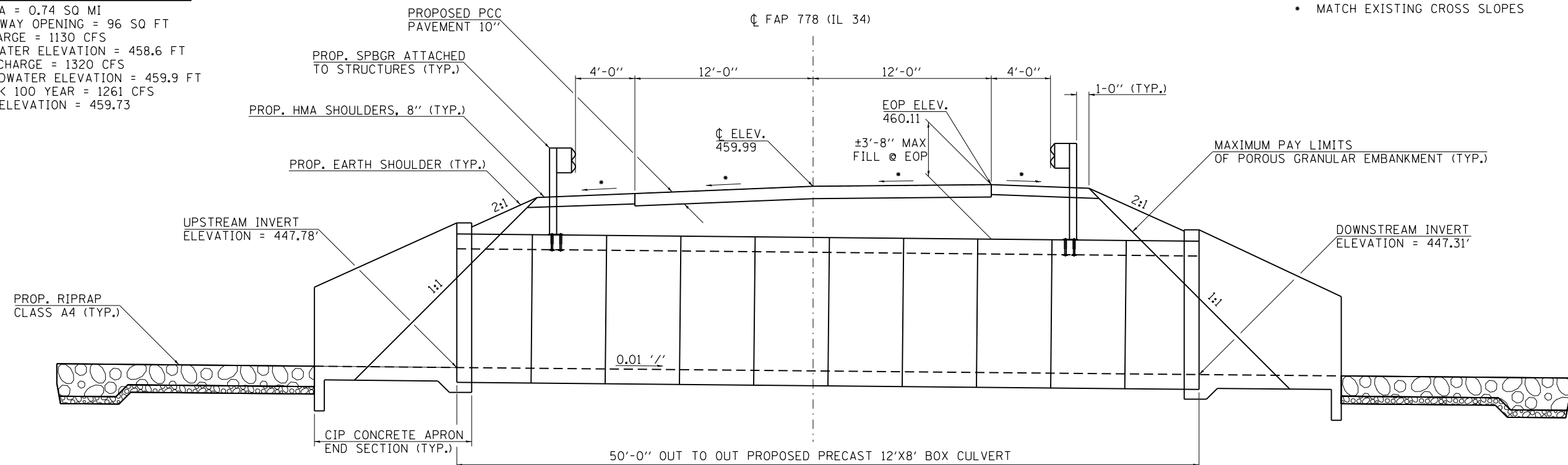
PRECAST BOX CULVERT
LOADING HL-93
ASTM C 1577

HYDRAULIC DATA (50 YR DESIGN)

DRAINAGE AREA = 0.74 SQ MI
 DESIGN WATERWAY OPENING = 96 SQ FT
 DESIGN DISCHARGE = 1130 CFS
 DESIGN HEADWATER ELEVATION = 458.6 FT
 100 YEAR DISCHARGE = 1320 CFS
 100 YEAR HEADWATER ELEVATION = 459.9 FT
 OVERTOPPING < 100 YEAR = 1261 CFS
 LOW PROFILE ELEVATION = 459.73

FINAL SECTION AFTER CONSTRUCTION OF CAST-IN-PLACE APRONS

- MATCH EXISTING CROSS SLOPES

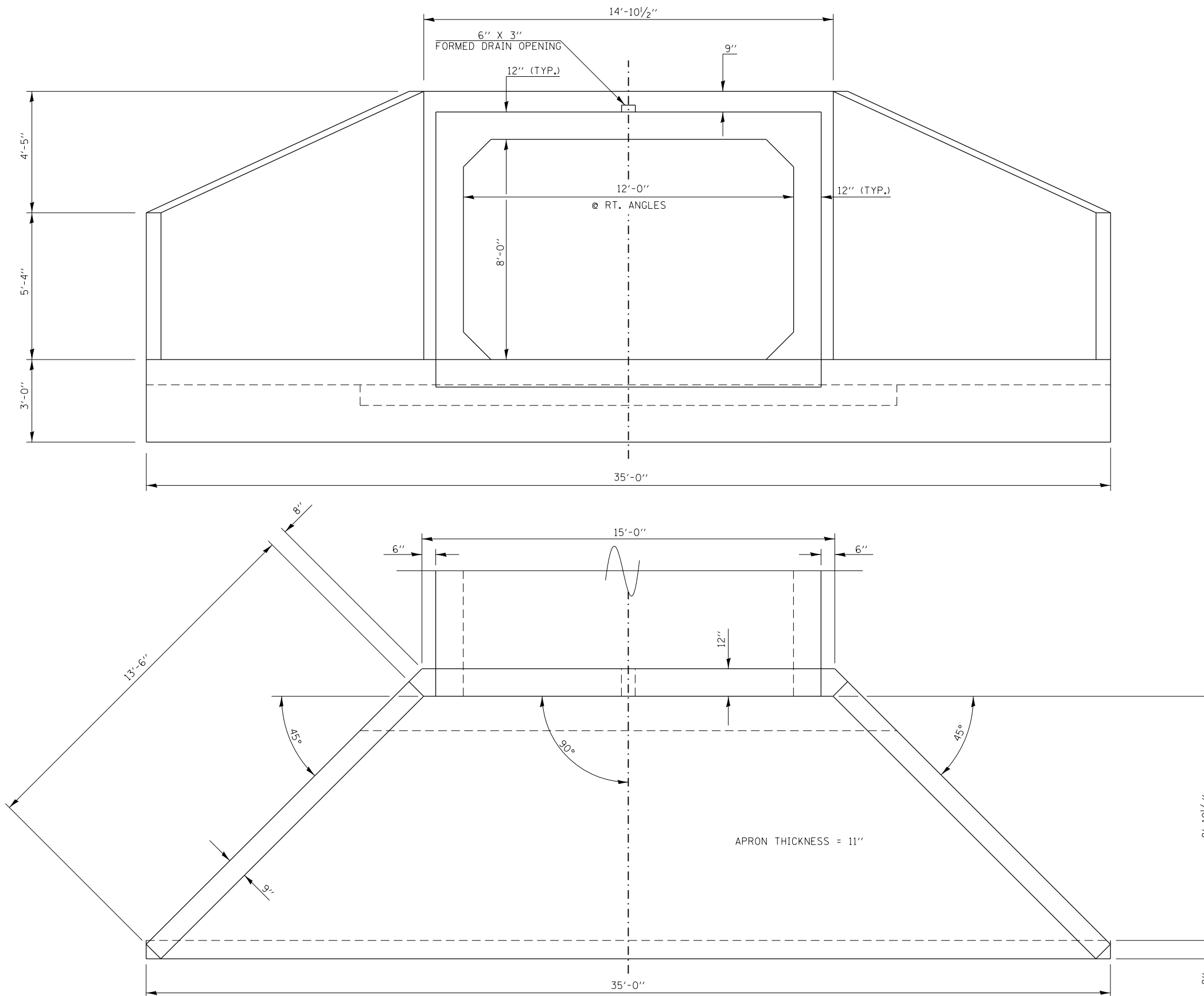


ELEVATION
(LOOKING UPSTATION)

NOTE: ALL HORIZONTAL DIMENSIONS SHOWN @ RT. L'S TO CL IL 34.

PRECAST BOX CULVERT
LOADING HL-93
ASTM C 1577

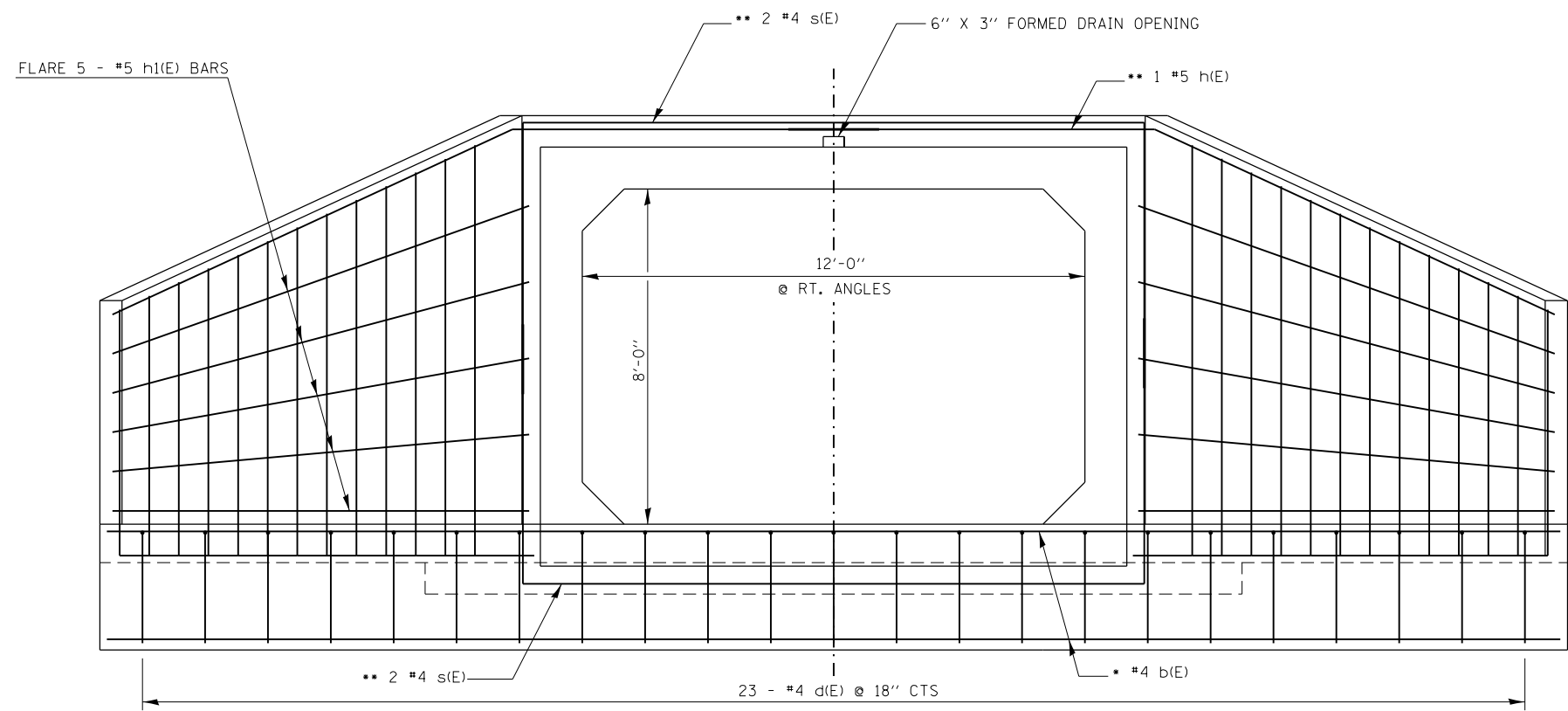
FILE NAME =	USER NAME = porterc	DESIGNED -	REVISED -	STATE OF ILLINOIS DEPARTMENT OF TRANSPORTATION	TEMPORARY AND FINAL SECTIONS				F.A.P. RTE.	SECTION	COUNTY	TOTAL SHEETS	SHEET NO.
ci:\pw\work\p\idot\porterc\id0322720\78316-sht-plan.dgn		DRAWN -	REVISED -		778	4B-2	HARDIN	19	11				
PLOT SCALE = 8.0000' / in.		CHECKED -	REVISED -		CONTRACT NO. 78316								
Default		DATE -	REVISED -		SCALE:	SHEET OF SHEETS	STA. TO STA.	ILLINOIS FED. AID PROJECT					



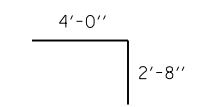
CAST-IN-PLACE CONCRETE APRON END SECTION DETAILS

(TYPICAL EACH END)

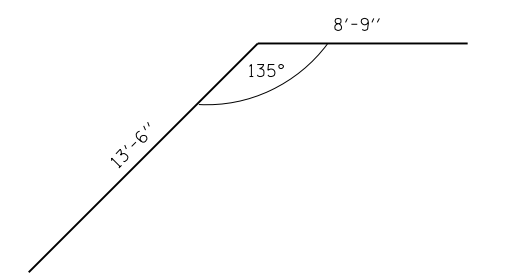
FILE NAME =	USER NAME = porterc	DESIGNED -	REVISED -	STATE OF ILLINOIS DEPARTMENT OF TRANSPORTATION	CAST-IN-PLACE CONCRETE APRON END SECTION DETAILS			F.A.P. RTE.	SECTION	COUNTY	TOTAL SHEETS	SHEET NO.				
Default	6-sht-plen.dgn	DRAWN -	REVISED -		SCALE:	SHEET	OF	SHEETS	STA.	TO	STA.	778	4B-2	HARDIN	19	12
	PLOT SCALE = 8.0000' / in.	CHECKED -	REVISED -								CONTRACT NO. 78316					
	PLOT DATE = 1/28/2014	DATE -	REVISED -								ILLINOIS FED. AID PROJECT					



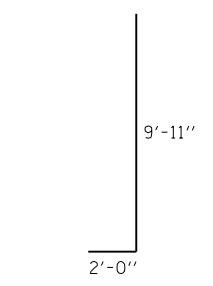
ELEVATION
@ RT L'S TO C OF BOX



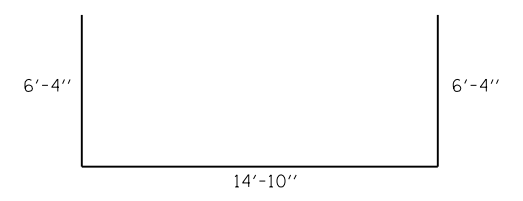
BAR d(E)



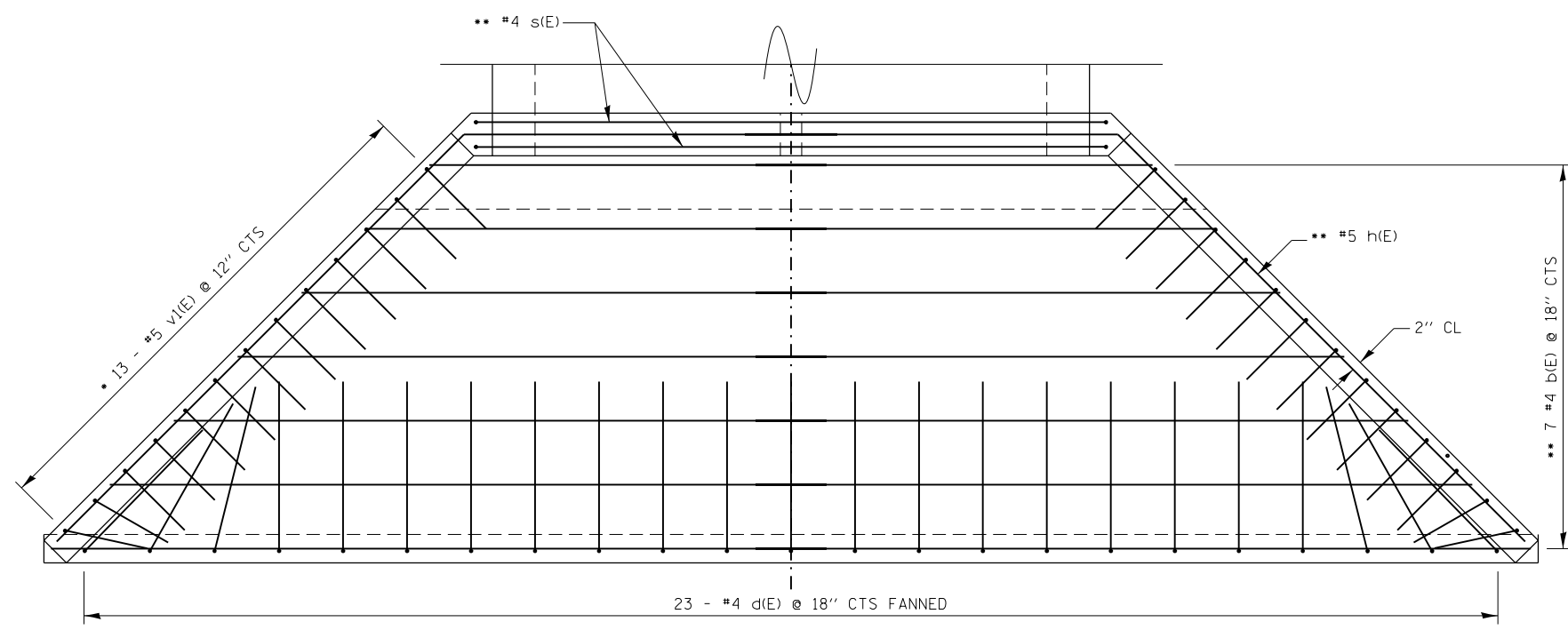
BAR h(E)



BAR v1(E)



BAR s(E)



PLAN

BILL OF MATERIAL

BAR	No.	SIZE	LENGTH	SHAPE
b(E)	36	#4	18'-2"	—
d(E)	46	#4	6'-8"	U
h(E)	4	#5	22'-3"	∠
h1(E)	20	#5	14'-6"	—
s(E)	8	#4	27'-6"	U
v1(E)	52	#5	11'-11"	J
			CONCRETE BOX CULVERTS	CU. YD. 34.8
			REINFORCEMENT BARS EPOXY COATED	POUND 1840

NOTE: BILL OF MATERIAL SCHEDULE IS TOTAL FOR BOTH ENDS

DESIGN STRESSES

fy = 60,000 psi
f'c = 3,500 psi

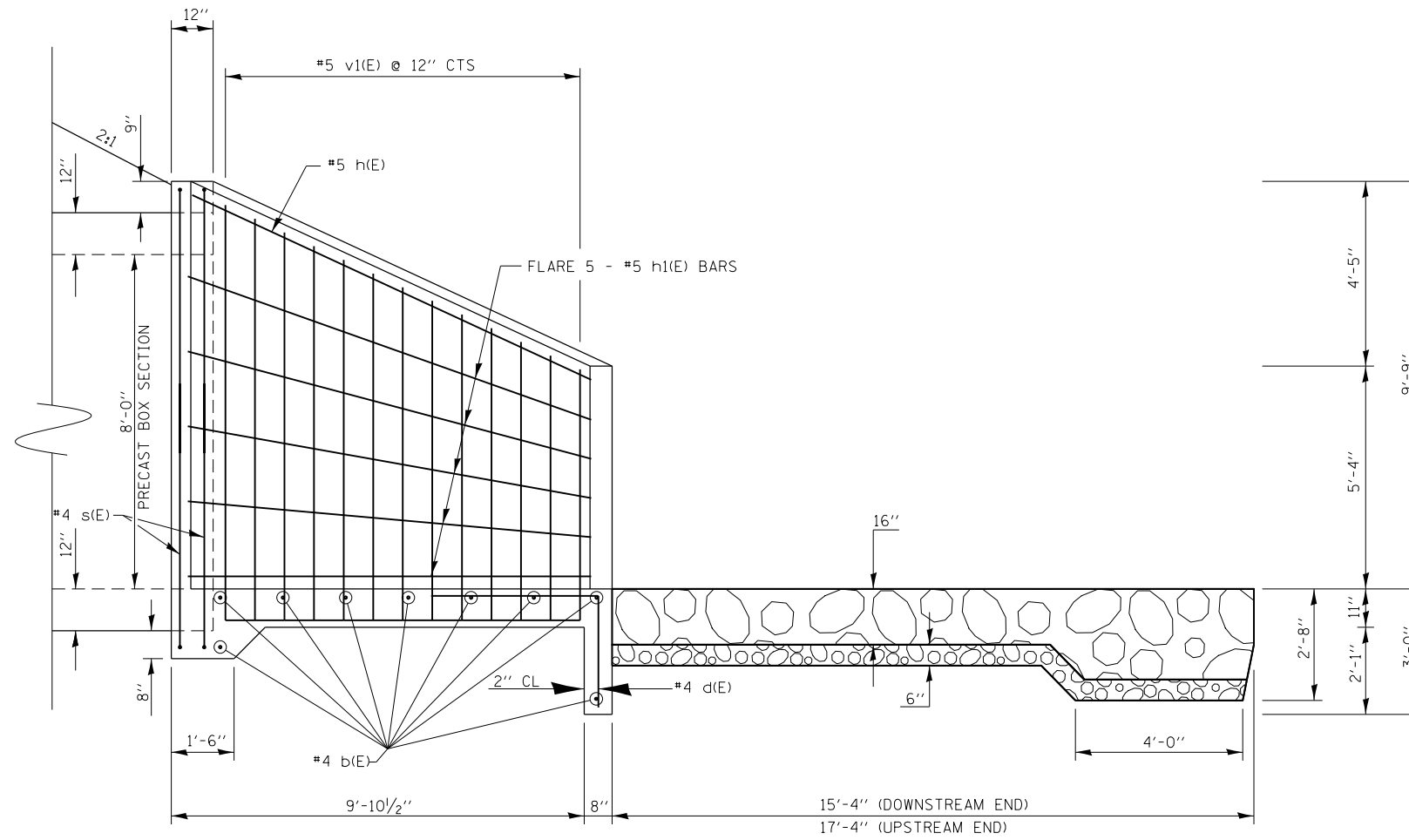
MINIMUM BAR LAP

- #4 = 1'-8"
- #5 = 2'-2"
- CUT OR BEND TO FIT IN FIELD
- LAP BARS WHERE NECESSARY

WORK THIS SHEET WITH SHEET 15 OF 20
REINFORCEMENT BARS DESIGNATED (E) SHALL BE EPOXY COATED.
REINFORCEMENT BARS SHALL CONFORM TO THE REQUIREMENTS OF ASTM A 706 GRADE 60.
EXPOSED EDGES SHALL BE BEVELED 3/4".

CAST-IN-PLACE CONCRETE APRON END SECTION REINFORCEMENT DETAILS
(TYPICAL EACH END)

FILE NAME =	USER NAME = porterc	DESIGNED -	REVISED -	STATE OF ILLINOIS DEPARTMENT OF TRANSPORTATION	CAST-IN-PLACE CONCRETE APRON END SECTION REINFORCEMENT DETAILS	F.A.P. RTE.	SECTION	COUNTY	TOTAL SHEETS	SHEET NO.	
Default	6-sht-plan.dgn	DRAWN -	REVISED -			778	4B-2	HARDIN	19	13	
	PLOT SCALE = 8.0000' / in.	CHECKED -	REVISED -			CONTRACT NO. 78316					
	PLOT DATE = 1/28/2014	DATE -	REVISED -			ILLINOIS FED. AID PROJECT					
				SCALE:	SHEET OF SHEETS	STA. TO STA.					



HALF SIDE ELEVATION

(AT RT ANGLES TO ϕ ROADWAY)

FILE NAME =	USER NAME = porterc	DESIGNED -	REVISED -
ct:\pwork\pwork\porterc\d0322720\78316-sht-plen.dgn		DRAWN -	REVISED -
Default	PLOT SCALE = 4.0000' / in.	CHECKED -	REVISED -
	PLOT DATE = 1/28/2014	DATE -	REVISED -

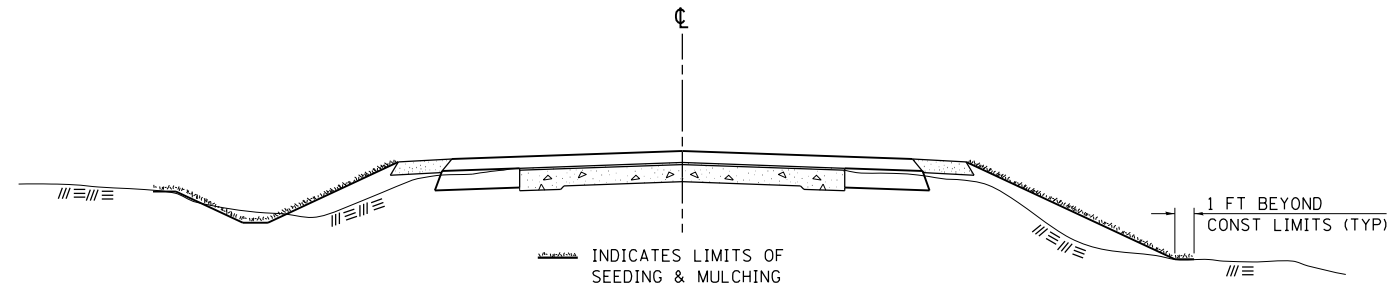
**STATE OF ILLINOIS
DEPARTMENT OF TRANSPORTATION**

HALF SIDE ELEVATION

SCALE: SHEET OF SHEETS STA. TO STA.

F.A.P. RTE.	SECTION	COUNTY	TOTAL SHEETS	SHEET NO.
778	4B-2	HARDIN	19	14
				78316
ILLINOIS FED. AID PROJECT				

SEEDING & MULCHING



GENERAL NOTES

IN GENERAL, ALL EARTH SURFACES DISTURBED DURING CONSTRUCTION OPERATIONS SHALL BE SEEDED AND MULCHED UPON COMPLETION OF ALL GRADING OPERATIONS.

FERTILIZER NUTRIENTS AND LIMESTONE SHALL BE APPLIED TO ALL SEEDED AREAS.

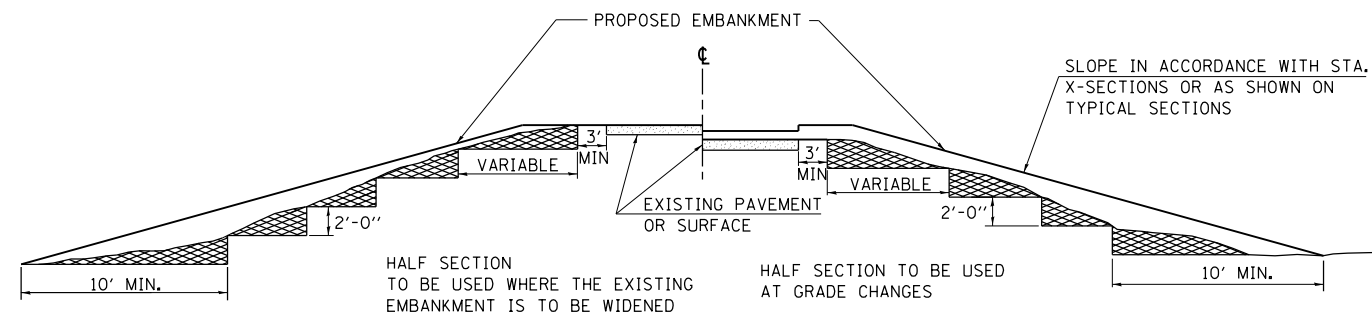
THE RATES OF APPLICATION OF FERTILIZER, MULCH AND LIMESTONE SHALL BE AS SPECIFIED IN THE SPECIAL PROVISIONS.

SECTIONS 250 AND 251 OF THE STANDARD SPECIFICATIONS SHALL GOVERN THIS WORK EXCEPT AS SPECIFIED HEREIN OR AS NOTED IN THE SPECIAL PROVISIONS.

REVISIONS	
REDRAWN	2-15-89
REVISED	8-15-94
REVISED	6-3-99
REVISED	3-27-08

STD. 9-12

TYPICAL CROSS SECTION SHOWING STEP CONSTRUCTION ON EXISTING FILL



MATERIAL TO BE REMOVED AND REPLACED IN THE EMBANKMENT IN ACCORDANCE WITH ART. 205.04 OF THE STANDARD SPECIFICATION. COST TO BE INCLUDED IN THE VARIOUS ITEMS OF EXCAVATION AND NO ADDITIONAL COMPENSATION WILL BE ALLOWED BECAUSE OF THIS WORK.

REVISIONS	
REDRAWN	2-15-89
REVISED	8-15-94
CHECKED	6-3-99
RESIZED	5-7-08

STD. 9-16

FILE NAME =	USER NAME = porterw	DESIGNED -	REVISED -
ct:\pw\work\p1dot\porterw\0322720\78316-sht-plan.dgn		DRAWN -	REVISED -
Default	PLOT SCALE = 100.0000' / in.	CHECKED -	REVISED -
	PLOT DATE = 1/28/2014	DATE -	REVISED -

**STATE OF ILLINOIS
DEPARTMENT OF TRANSPORTATION**

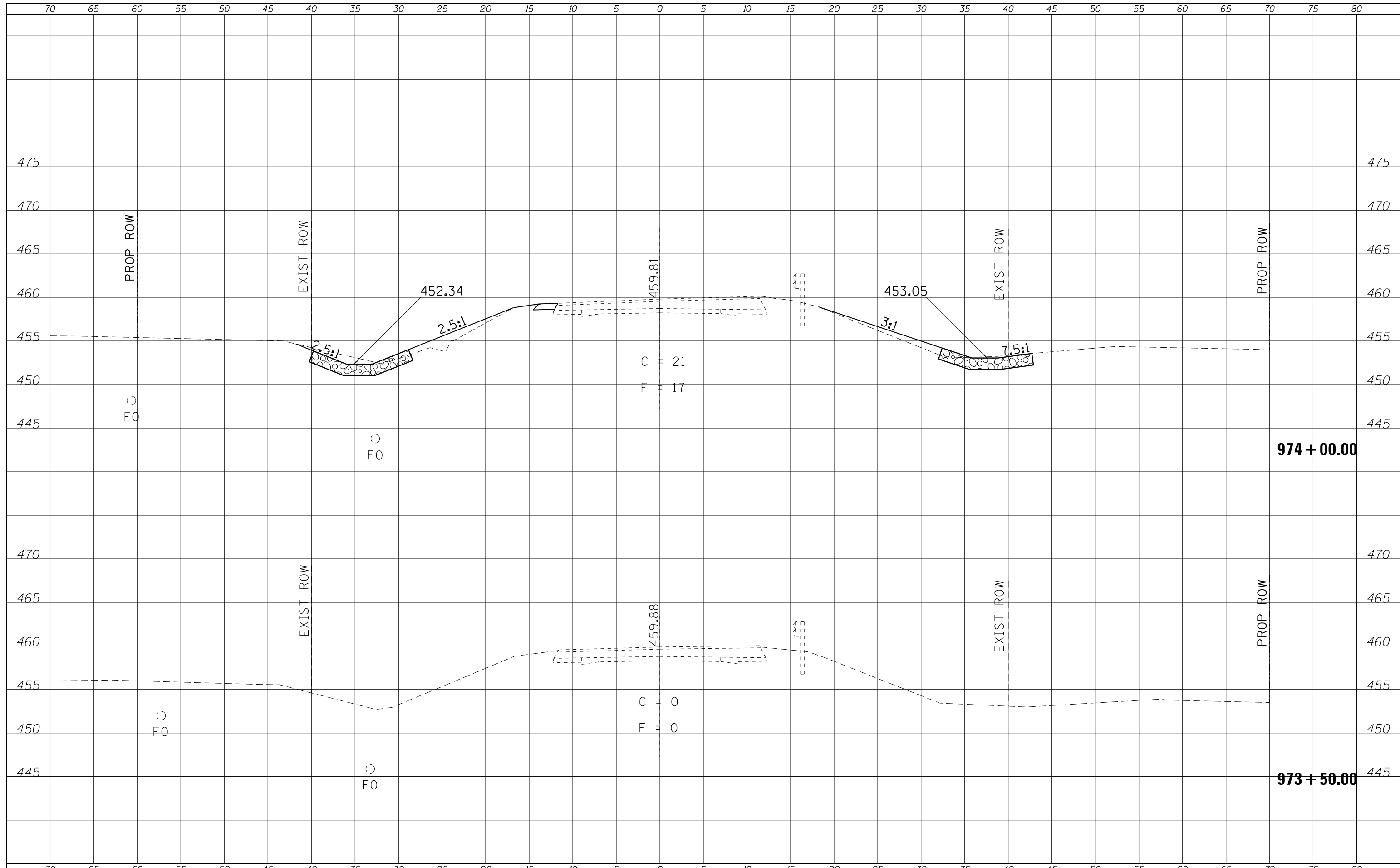
DISTRICT STANDARDS

SCALE: SHEET OF SHEETS STA. TO STA.

F.A.P. RTE.	SECTION	COUNTY	TOTAL SHEETS	SHEET NO.
778	4B-2	HARDIN	19	15
				CONTRACT NO. 78315
ILLINOIS FED. AID PROJECT				

DATE	
BY	
SURVEYED	
PLOTTED	
TEMPLATE	
AREAS	
CHECKED	
NO.	

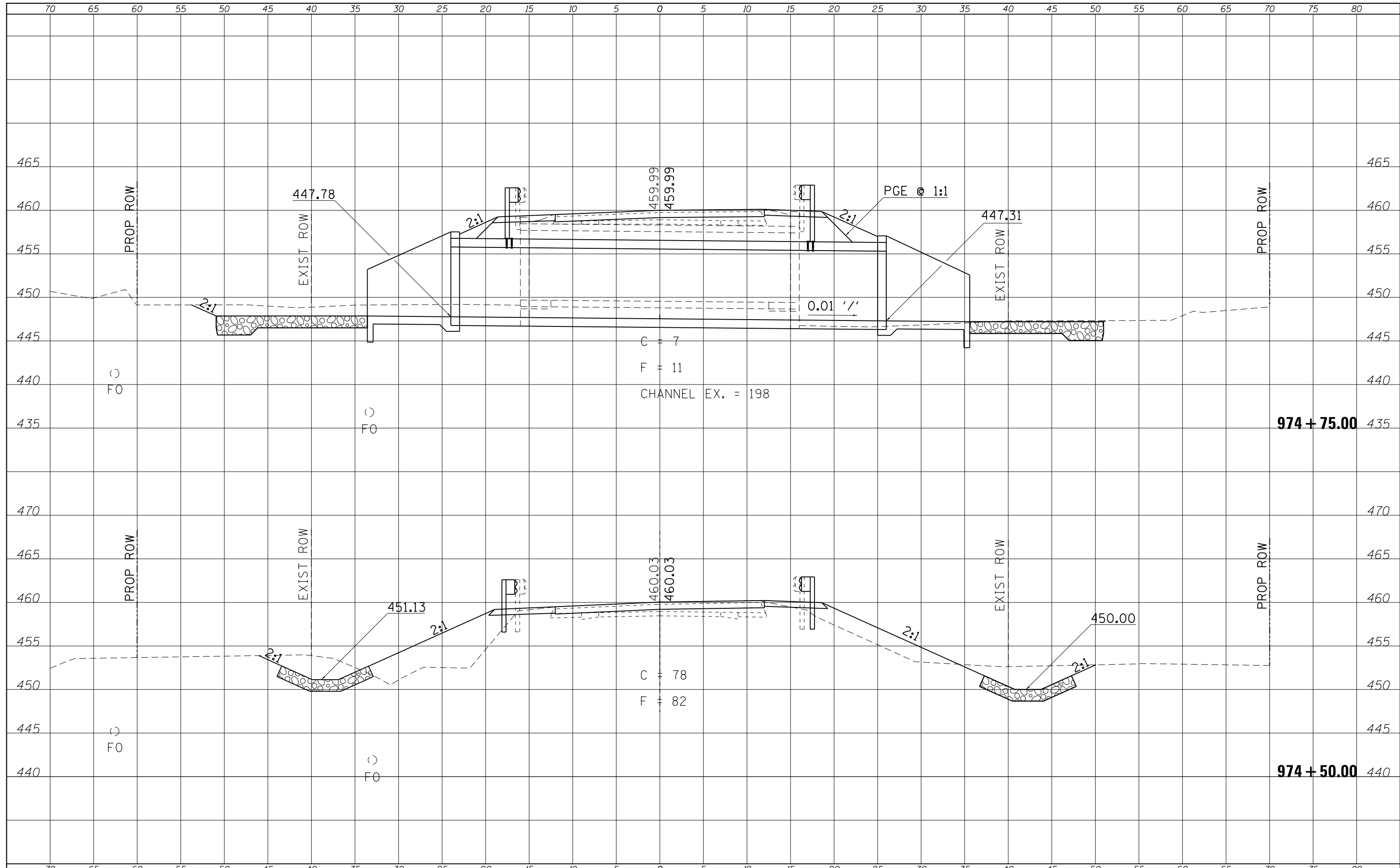
DATE	
BY	
SURVEYED	
PLOTTED	
TEMPLATE	
AREAS	
CHECKED	
NO.	



FILE NAME =	USER NAME = portercw	DESIGNED -	REVISIED -	STATE OF ILLINOIS DEPARTMENT OF TRANSPORTATION	CROSS SECTIONS			F.A.P. RTE.	SECTION	COUNTY	TOTAL SHEETS	SHEET NO.
es:\pw\work\pwidot\portercw\d0322720\78316-sh1-s.dgn		DRAWN -	REVISIED -		778	4B-2	HARDIN	19	16			
Default	PLOT SCALE = 10.0000' / in.	CHECKED -	REVISIED -		CONTRACT NO. 78316							
	PLOT DATE = 1/28/2014	DATE -	REVISIED -		ILLINOIS FED. AID PROJECT							

DATE	
BY	
FINAL SURVEY	SURVEYED
NOTE BOOK	PLOTTED
NO.	TEMPLATE
	AREAS CHECKED
	AREAS CHECKED

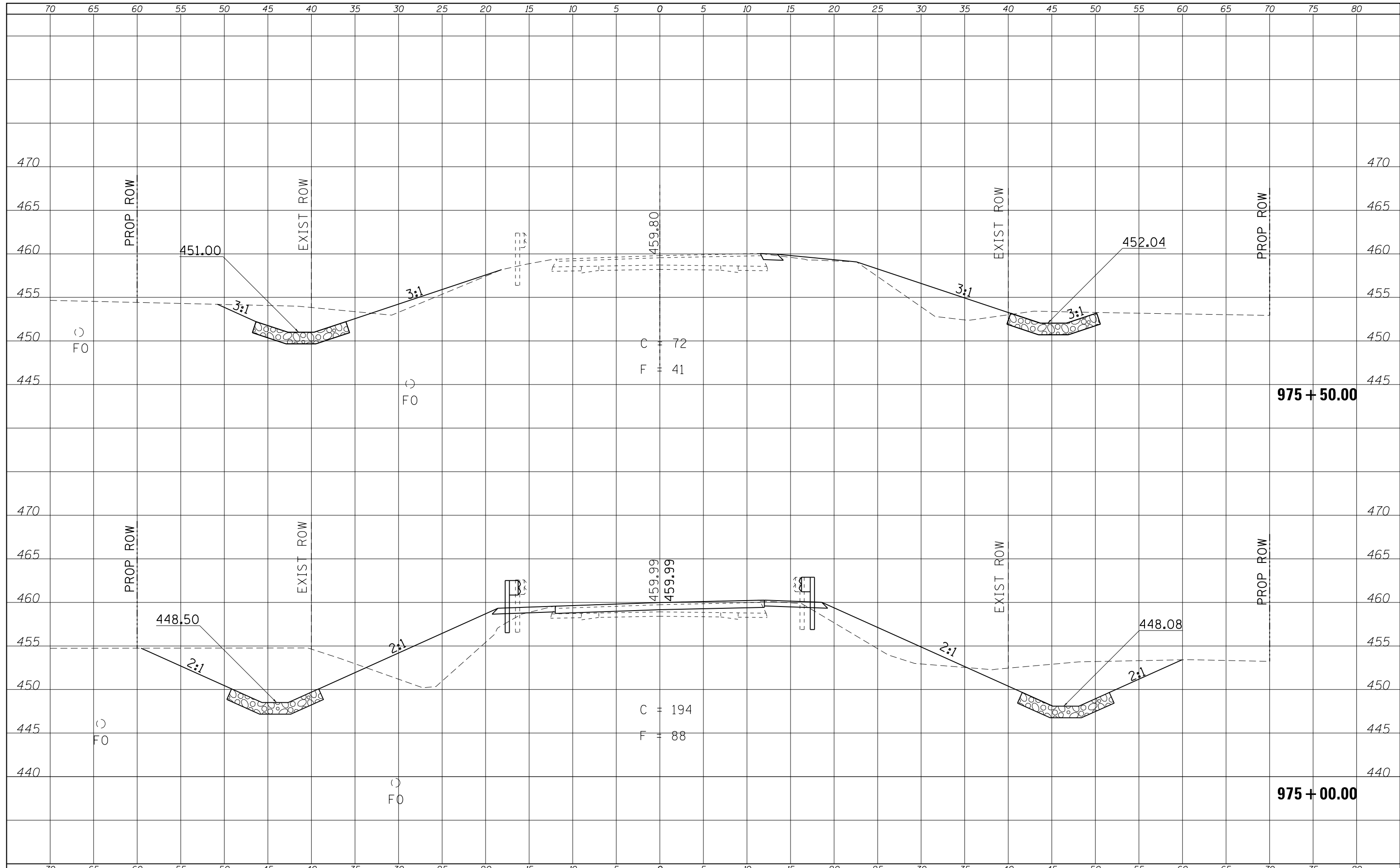
DATE	
BY	
ORIGINAL SURVEY	SURVEYED
NOTE BOOK	PLOTTED
NO.	TEMPLATE
	AREAS CHECKED
	AREAS CHECKED



FILE NAME =	USER NAME = portercw	DESIGNED -	REVISD -	STATE OF ILLINOIS DEPARTMENT OF TRANSPORTATION	CROSS SECTIONS			F.A.P. RTE.	SECTION	COUNTY	TOTAL SHEETS	SHEET NO.
es:\pw_work\pwidot\portercw\d0322720\78316-sh1-s.dgn	DRAWN -	REVISD -	778					4B-2	HARDIN	19	17	
Default	PLOT SCALE = 10.0000 ' / in.	CHECKED -	REVISD -		CONTRACT NO. 78316							
	PLOT DATE = 1/28/2014	DATE -	REVISD -		SCALE:	SHEET	OF	SHEETS	STA.	TO	STA.	ILLINOIS FED. AID PROJECT

DATE	
BY	
SURVEYED	
PLOTTED	
TEMPLATE	
AREAS CHECKED	
FINAL SURVEY NOTE BOOK NO.	

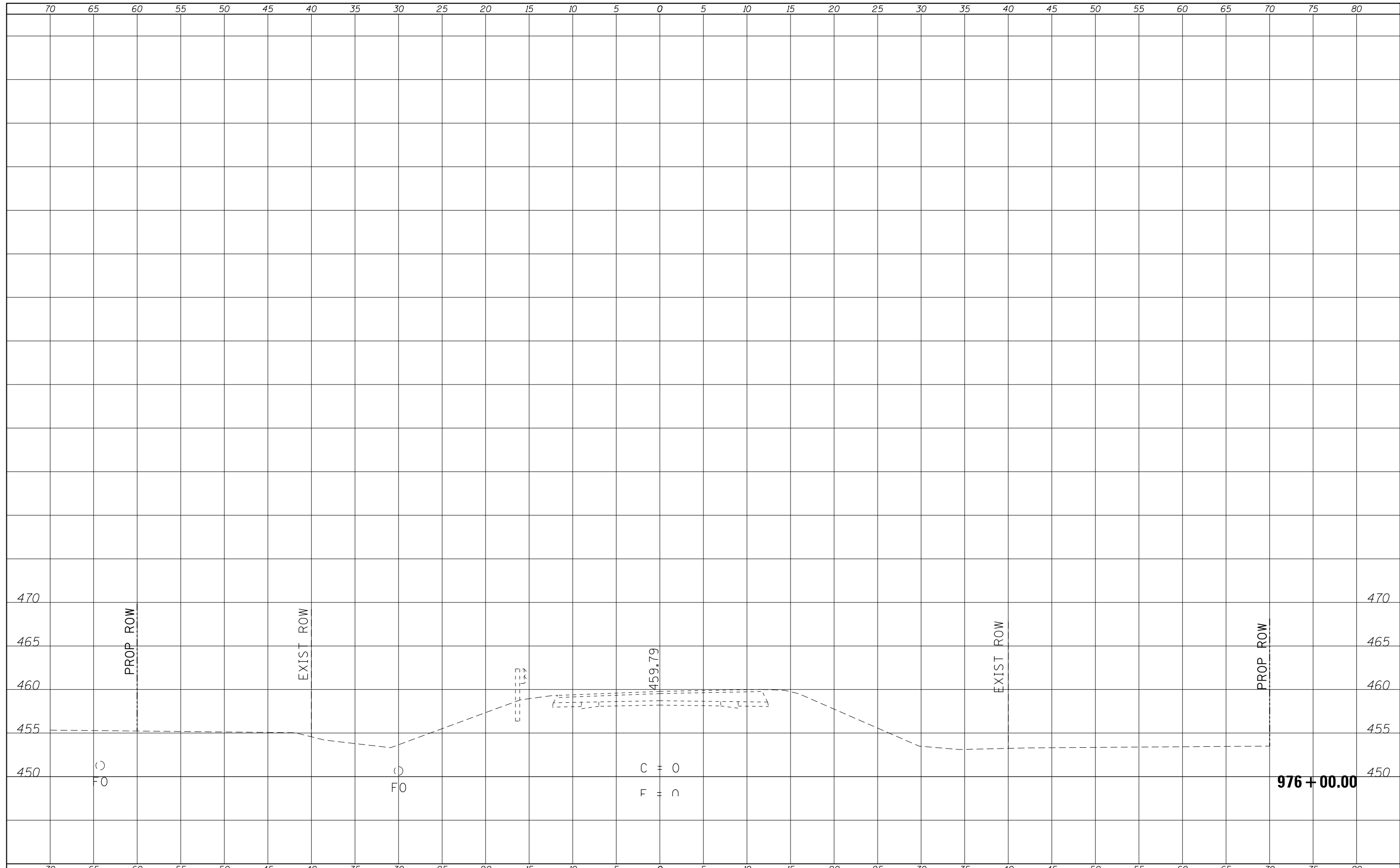
DATE	
BY	
SURVEYED	
PLOTTED	
TEMPLATE	
AREAS CHECKED	
ORIGINAL SURVEY NOTE BOOK NO.	



FILE NAME =	USER NAME = portercw	DESIGNED -	REVISD -	STATE OF ILLINOIS DEPARTMENT OF TRANSPORTATION	CROSS SECTIONS			F.A.P. RTE.	SECTION	COUNTY	TOTAL SHEETS	SHEET NO.
es:\pw_work\pwidot\portercw\d0322720\78316-sh1-.s.dgn		DRAWN -	REVISD -		778	4B-2	HARDIN	19	18			
Default	PLOT SCALE = 10.0000' / in.	CHECKED -	REVISD -		CONTRACT NO. 78316							
	PLOT DATE = 1/28/2014	DATE -	REVISD -		SCALE:	SHEET	OF	SHEETS	STA.	TO	STA.	ILLINOIS FED. AID PROJECT

DATE	
BY	
SURVEYED	
PLOTTED	
TEMPLATE	
AREAS	
CHECKED	
FINAL SURVEY	
NOTE BOOK	
NO.	

DATE	
BY	
SURVEYED	
PLOTTED	
TEMPLATE	
AREAS	
CHECKED	
ORIGINAL SURVEY	
NOTE BOOK	
NO.	



FILE NAME =	USER NAME = porterc	DESIGNED -	REVISIED -	STATE OF ILLINOIS DEPARTMENT OF TRANSPORTATION	CROSS SECTIONS			F.A.P. RTE.	SECTION	COUNTY	TOTAL SHEETS	SHEET NO.
c:\pw\work\p\dot\porterc\d0322720\78316-sh1-s.dgn		DRAWN -	REVISIED -		778	4B-2	HARDIN	19	19			
Default	PLOT SCALE = 10.0000' / in.	CHECKED -	REVISIED -		CONTRACT NO. 78316							
	PLOT DATE = 1/28/2014	DATE -	REVISIED -		SCALE:	SHEET	OF	SHEETS	STA.	TO	STA.	ILLINOIS FED. AID PROJECT