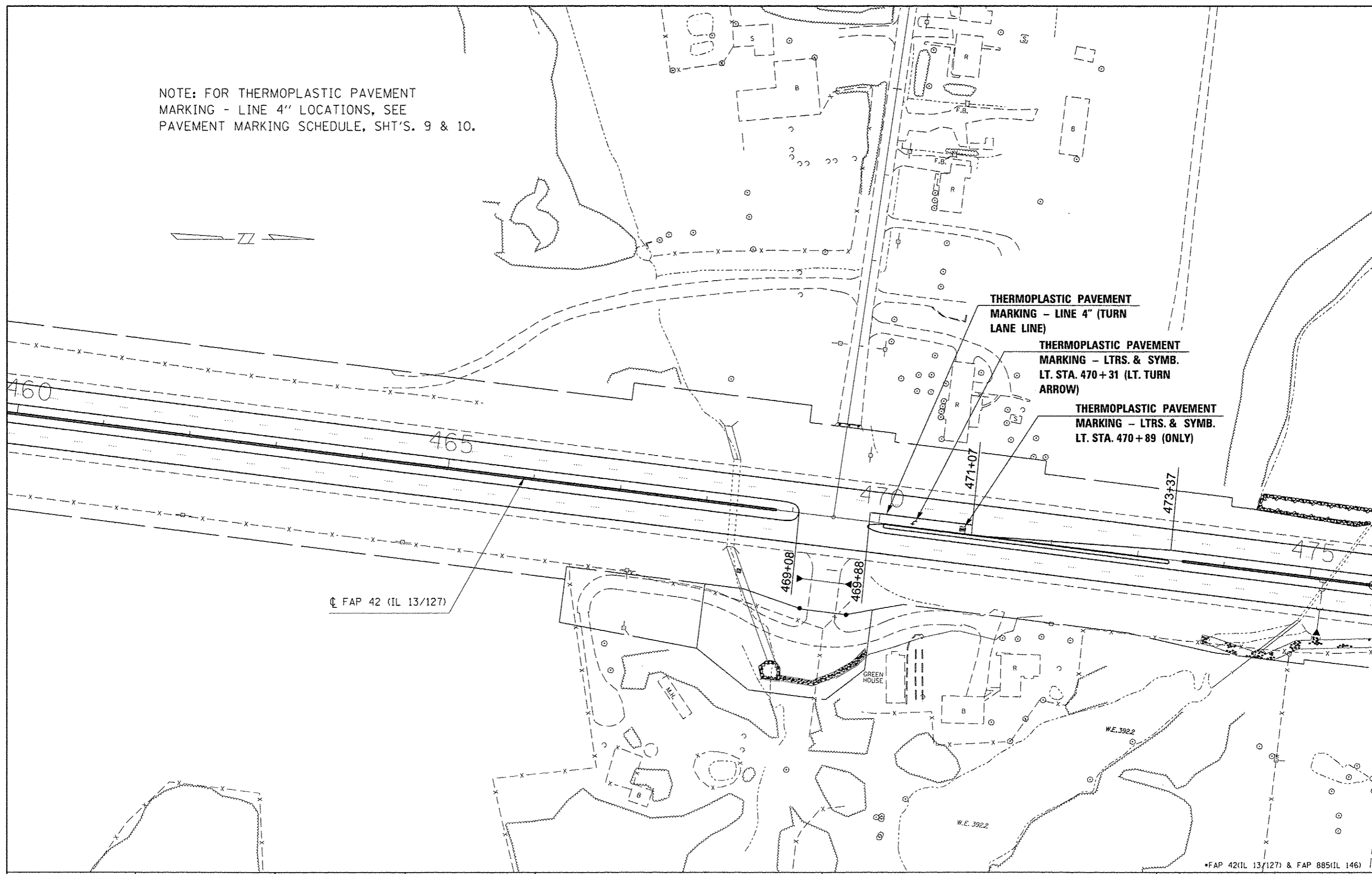
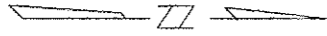


NOTE: FOR THERMOPLASTIC PAVEMENT MARKING - LINE 4" LOCATIONS, SEE PAVEMENT MARKING SCHEDULE, SHT'S. 9 & 10.



THERMOPLASTIC PAVEMENT MARKING - LINE 4" (TURN LANE LINE)

THERMOPLASTIC PAVEMENT MARKING - LTRS. & SYMB. LT. STA. 470+31 (LT. TURN ARROW)

THERMOPLASTIC PAVEMENT MARKING - LTRS. & SYMB. LT. STA. 470+89 (ONLY)

☐ FAP 42 (IL 13/127)

\*FAP 42(IL 13/127) & FAP 885(IL 146)

FILE NAME :	USER NAME : mecordr	DESIGNED -	REVISED -
ca:\p\work\p\idat\me cordr\1834233\178\66-shu\pln.dgn		DRAWN -	REVISED -
Default		CHECKED -	REVISED -
	PLOT SCALE = 100.0000' / in.	DATE -	REVISED -
	PLOT DATE = 12/4/2013		

STATE OF ILLINOIS  
DEPARTMENT OF TRANSPORTATION

PLAN SHEET 7

SCALE: SHEET OF SHEETS STA. TO STA.

F.A.P. RTE.	SECTION	COUNTY	TOTAL SHEETS	SHEET NO.
D9 PAVT PRESERV 2014-1	JACKSON/POPE	23	19	
CONTRACT NO. 78366			ILLINOIS FED. AID PROJECT	