

F.A.P. RTE.	SECTION	COUNTY	TOTAL SHEETS	SHEET NO.
331	D9 PAV'T MARKING 2014-1	VARIOUS	4	1
ILLINOIS			CONTRACT NO. 78407	

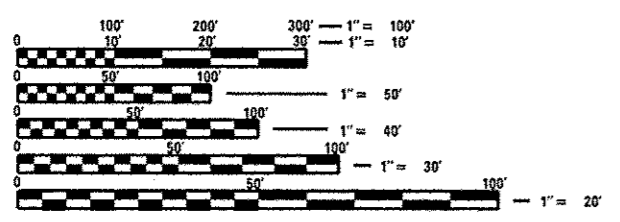
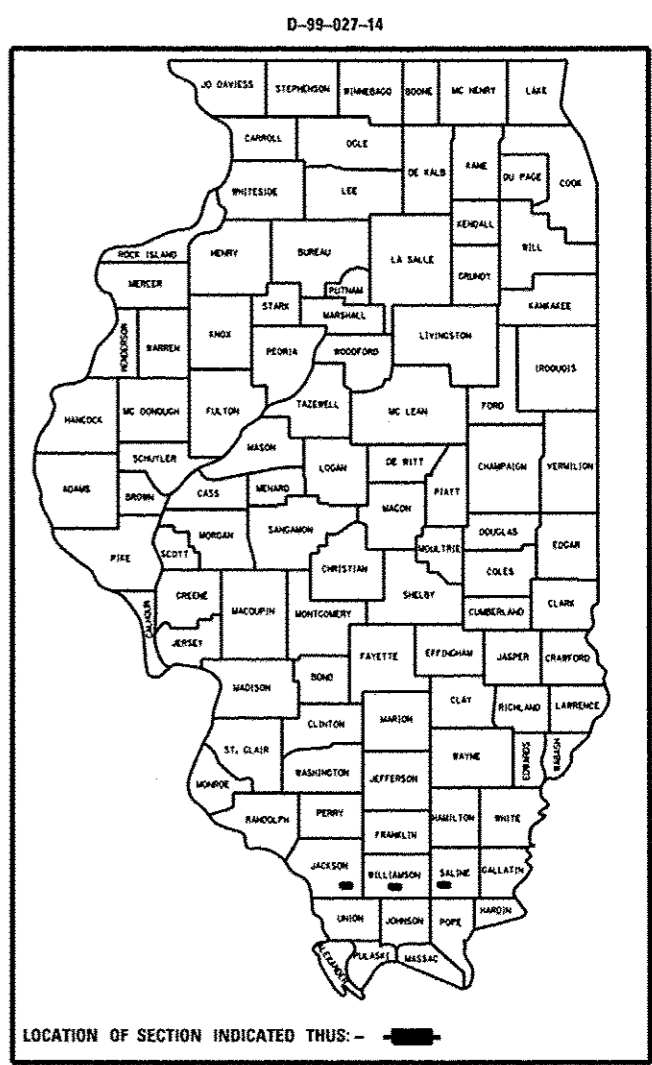
STATE OF ILLINOIS
DEPARTMENT OF TRANSPORTATION
DIVISION OF HIGHWAYS

**PROPOSED
HIGHWAY PLANS**

IL 13 (FAP 331)
SECTION D9 PAVEMENT MARKING 2014-1
PROJECT ACHSIP-0331(069)
PAVEMENT MARKINGS AT MEDIAN CROSSOVERS
VARIOUS COUNTY

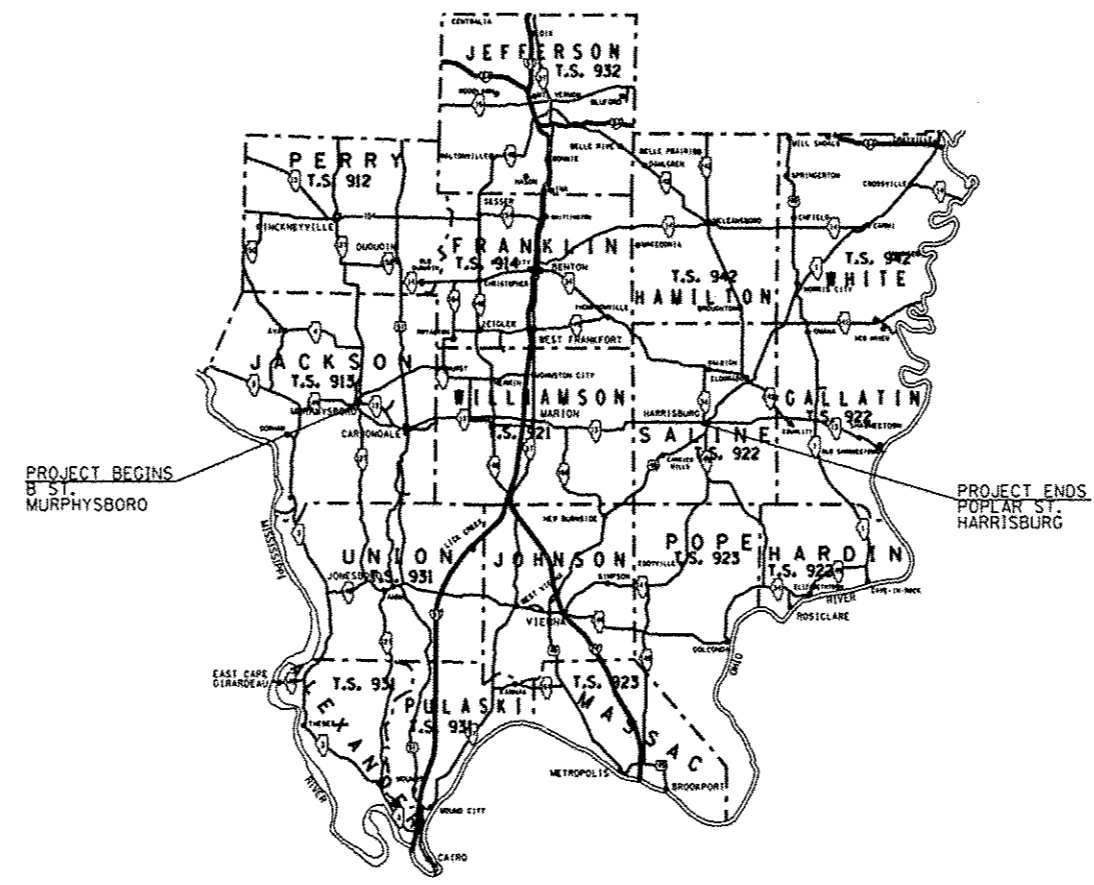
C-99-033-14

FOR INDEX OF SHEETS, SEE SHEET NO. 2



FULL SIZE PLANS HAVE BEEN PREPARED USING STANDARD ENGINEERING SCALES. REDUCED SIZED PLANS WILL NOT CONFORM TO STANDARD SCALES. IN MAKING MEASUREMENTS ON REDUCED PLANS, THE ABOVE SCALES MAY BE USED.

J.U.L.I.E.
JOINT UTILITY LOCATION INFORMATION FOR EXCAVATION
1-800-892-0123
OR 811



PROJECT ENGINEER CAROLYN ELDRIDGE
PROJECT MANAGER SUSAN POE

CONTRACT NO. 78407

STATE OF ILLINOIS
DEPARTMENT OF TRANSPORTATION
DIVISION OF HIGHWAYS

SUBMITTED Jan 24 2014
Jeffrey L. Keiser
DEPUTY DIRECTOR OF HIGHWAYS, REGION ENGINEER

March 21 2014
John D. Baranzelli, PE, B
ENGINEER OF DESIGN AND ENVIRONMENT

March 21 2014
Omer Osman, PE, B
DIRECTOR OF HIGHWAYS, CHIEF ENGINEER

PRINTED BY THE AUTHORITY
OF THE STATE OF ILLINOIS