

SUMMARY OF QUANTITIES

GENERAL NOTES

CODE NO.	ITEM	CONSTRUCTION TYPE CODE	
		UNIT	TOTAL QUANTITY
20100500	TREE REMOVAL, ACRES	ACRE	2.13
20400800	FURNISHED EXCAVATION	CU YD	10,964
25100630	EROSION CONTROL BLANKET	50 YD	9,775
25100635	HEAVY DUTY EROSION CONTROL BLANKET	50 YD	722
28000250	TEMPORARY EROSION CONTROL SEEDING	POUND	880
28000305	TEMPORARY DITCH CHECKS	FOOT	75
28000400	PERIMETER EROSION BARRIER	FOOT	801
28000500	INLET AND PIPE PROTECTION	EACH	1
28100705	STONE DUMPED RIPRAP, CLASS A3	50 YD	14
28100707	STONE DUMPED RIPRAP, CLASS A4	50 YD	27
28200200	FILTER FABRIC	50 YD	41
35100100	AGGREGATE BASE COURSE, TYPE A	TON	192
40600100	BITUMINOUS MATERIALS (PRIME COAT)	GALLON	203
40603080	HOT-MIX ASPHALT BINDER COURSE, IL-19.0, N50	TON	107
40603310	HOT-MIX ASPHALT SURFACE COURSE, MIX "C" N50	TON	29
44213200	SAW CUTS	FOOT	768
48100100	AGGREGATE SHOULDERS, TYPE A	TON	115
54201921	PIPE CULVERTS, CLASS D, TYPE 3 36"	FOOT	55
54213663	PRECAST REINFORCED CONCRETE FLARED END SECTIONS 18"	EACH	1
54213891	STEEL END SECTIONS 36"	EACH	1
550A0680	STORM SEWERS, CLASS A, TYPE 3 18"	FOOT	67
60218400	MANHOLES, TYPE A, 4' -DIAMETER, TYPE1 FRAME, CLOSED LID	EACH	1
63200310	GUARDRAIL REMOVAL	FOOT	535
66600105	FURNISHING AND ERECTING RIGHT OF WAY MARKERS	EACH	9
67100100	MOBILIZATION	L SUM	1
78001110	PAINT PAVEMENT MARKING - LINE 4"	FOOT	760
X2020410	EARTH EXCAVATION (SPECIAL)	CU YD	2,253
X2110100	TOPSOIL FURNISH AND PLACE, SPECIAL	CU YD	963
X2111000	TOPSOIL EXCAVATION	CU YD	1,046
X2501000	SEEDING, CLASS 2 (SPECIAL)	ACRE	2.20
X7010216	TRAFFIC CONTROL AND PROTECTION (SPECIAL)	L SUM	1
Z0013798	CONSTRUCTION LAYOUT	L SUM	1

*SEE THE CONTRACT DOCUMENTS FOR SPECIAL PROVISIONS.

△ SPECIALTY ITEMS

A MINIMUM OF 48 HOURS ADVANCE NOTICE IS REQUIRED FOR NON-EMERGENCY WORK.

THE CONTRACTOR SHALL BE RESPONSIBLE FOR PROTECTING UTILITY PROPERTY DURING CONSTRUCTION OPERATIONS AS OUTLINED IN ARTICLE 107.31 OF THE STANDARD SPECIFICATIONS.

THE CONTRACTOR SHALL SEED ALL DISTURBED AREAS WITHIN THE PROJECT LIMITS.

NO OVERHAUL HAS BEEN COMPUTED AND NONE SHALL BE PAID FOR FROM ANY SOURCE.

THE FINAL TOP FOUR INCHES OF SOIL IN ANY RIGHT-OF-WAY AREA DISTURBED BY THE CONTRACTOR MUST BE A COHESIVE SOIL CAPABLE OF SUPPORTING VEGETATION.

WHERE SECTION OR SUBSECTION MONUMENTS ARE ENCOUNTERED, THE ENGINEER SHALL BE NOTIFIED BEFORE SUCH MONUMENTS ARE REMOVED. THE CONTRACTOR SHALL PROTECT AND CAREFULLY PRESERVE ALL PROPERTY MARKERS, MONUMENTS AND RIGHT-OF-WAY PINS UNTIL THE OWNER, AN AUTHORIZED SURVEYOR, OR AGENT HAS WITNESSED OR OTHERWISE REFERENCED THEIR LOCATION. ANY PROPERTY MARKERS, SECTION OR SUBSECTION MONUMENTS DAMAGED BY THE CONTRACTOR SHALL BE REPLACED AT THE EXPENSE OF THE CONTRACTOR

ALL TELEPHONE AND ELECTRIC POLES, GAS PIPES, ETC. IN THE WAY OF IMPROVEMENTS SHALL BE MOVED BY THE UTILITIES PRIOR TO CONSTRUCTION AND SHALL NOT BE INCLUDED IN THE CONTRACT. THE CONTRACTOR SHALL NOTIFY THE RESPECTIVE UTILITIES TO MAKE THE NECESSARY ADJUSTMENTS PRIOR TO THIS CONSTRUCTION.

THE LOCATION AND ELEVATION OF THE VARIOUS UNDERGROUND UTILITIES AS SHOWN ON THE PLANS ARE NOT TO BE TAKEN AS EXACT. THE CONTRACTOR SHALL USE SPECIAL CARE WHEN CONDUCTING CONSTRUCTION OPERATIONS NEAR THEM TO PREVENT DAMAGE

SPECIAL CARE SHALL BE TAKEN BY THE CONTRACTOR TO PROTECT EXISTING TREES. NO ROOTS SHALL REMAIN EXPOSED FOR LONGER THAN 24 HOURS. ALL TREE PROTECTION MEASURES SHALL BE IN ACCORDANCE WITH ARTICLE 201.05 OF THE STANDARD SPECIFICATIONS. THIS WORK WILL BE CONSIDERED INCIDENTAL TO THE CONTRACT AND NO ADDITIONAL COMPENSATION WILL BE ALLOWED.

EXISTING MAIL BOXES, STREET SIGNS AND TRAFFIC SIGNS THAT ARE WITHIN THE CONSTRUCTION LIMITS AND NEED TO BE RELOCATED SHALL BE REMOVED AND RESET BY THE CONTRACTOR IN ACCORDANCE WITH ARTICLE 107.25. ANY DAMAGED ITEMS SHALL BE REPLACED AT THE EXPENSE OF THE CONTRACTOR.

EXISTING STRUCTURES (INCLUDING FOUNDATIONS, WALLS, CISTERNS, WELLS, OR OTHER UNDERGROUND STRUCTURES) WITHIN THE RIGHT OF WAY SHALL BE REMOVED IN ACCORDANCE WITH ARTICLE 501.04 AND 501.05 OF THE STANDARD SPECIFICATIONS, WITHOUT ADDITIONAL COMPENSATION, UNLESS OTHERWISE NOTED IN THE PLANS OR SPECIAL PROVISIONS.

PLAN	DATE
BY	
REVISIONS	
NO.	
DATE	
BY	
REVISIONS	
NO.	
DATE	
BY	

PROFILE	DATE
BY	
REVISIONS	
NO.	
DATE	
BY	
REVISIONS	
NO.	
DATE	
BY	

FILE: S:\PROJECTS\2018\1013018_100\Drawings\County\DESIGN\Cover\Std.dgn



DESIGNED -	REVISIONS -
DRAWN -	REVISIONS -
CHECKED -	REVISIONS -
DATE -	REVISIONS -

JO DAVIESS COUNTY
ELIZABETH SCALES MOUND ROAD
SLOPE STABILITY

SUMMARY OF QUANTITIES & GENERAL NOTES

SHEET NO. 1 OF 1 SHEETS

F.A.S. RTE.	SECTION	COUNTY	TOTAL SHEETS	SHEET NO.
071	10-00136-00-GE	JO DAVIESS	20	02
WHA* 1313101			CONTRACT NO. 85566	
ILLINOIS FED. AID PROJECT ER-0071122				

SCHEDULE OF QUANTITIES

EARTHWORK SCHEDULE

LOCATION	EARTH EXCAVATION (SPECIAL) X2020410*	EARTH EXCAVATION ADJUSTED FOR SHRINKAGE 25%	EMBANKMENT	EARTHWORK BALANCE WASTE (+) OR SHORTAGE (-)
	(CY)	(CY)	(CY)	(CY)
S. ELIZABETH SCALES MOUND ROAD	2,253	1,690	12,648	-10,964

TREE REMOVAL, ACRES		
STATION	ACRE	REMARKS
ELIZABETH SCALES MOUND ROAD LT. STA. 21+40 - 29+10	2.13	WITHIN PROP. R.O.W.
PROJECT TOTAL	2.13	

EROSION CONTROL BLANKET		
STATION	SQ YD	REMARKS
ELIZABETH SCALES MOUND ROAD LT. STA. 21+40 - 29+10	9,775	
PROJECT TOTAL	9,775	

HEAVY DUTY EROSION CONTROL BLANKET		
STATION	SQ YD	REMARKS
ELIZABETH SCALES MOUND ROAD LT. STA. 22+15 - 26+56	722	
PROJECT TOTAL	722	

TEMPORARY EROSION CONTROL SEEDING		
STATION	POUND	REMARKS
ELIZABETH SCALES MOUND ROAD LT. STA. 21+40 - 29+10	880	4 APPL @ 100 LBS / ACRE
PROJECT TOTAL	880	

TEMPORARY DITCH CHECKS		
STATION	FOOT	REMARKS
ELIZABETH SCALES MOUND ROAD LT. STA. 23+00	15	
LT. STA. 24+00	15	
LT. STA. 25+00	15	
LT. STA. 26+00	15	
LT. STA. 27+00	15	
PROJECT TOTAL	75	

PERIMETER EROSION BARRIER		
STATION	FOOT	REMARKS
ELIZABETH SCALES MOUND ROAD LT. STA. 21+50 - 22+43	128	ALONG PROPOSED ROW
LT. STA. 22+43 - 26+50	397	ALONG PROPOSED ROW
LT. STA. 26+50 - 29+10	276	ALONG PROPOSED ROW
PROJECT TOTAL	801	

INLET AND PIPE PROTECTION		
STATION	EACH	REMARKS
ELIZABETH SCALES MOUND ROAD LT. STA. 21+46	1	PROPOSED MANHOLE
PROJECT TOTAL	1	

STONE DUMPED RIPRAP, CLASS A3		
STATION	SQ YD	REMARKS
ELIZABETH SCALES MOUND ROAD LT. STA. 22+00	14	16' x 8'
PROJECT TOTAL	14	

STONE DUMPED RIPRAP, CLASS A4		
STATION	SQ YD	REMARKS
ELIZABETH SCALES MOUND ROAD LT. STA. 26+60	27	22' x 11'
PROJECT TOTAL	27	

FILTER FABRIC		
STATION	SQ YD	REMARKS
ELIZABETH SCALES MOUND ROAD LT. STA. 22+00	14	
LT. STA. 26+60	27	
PROJECT TOTAL	41	

AGGREGATE BASE COURSE, TYPE A		
STATION	TON	REMARKS
ELIZABETH SCALES MOUND ROAD LT. STA. 21+40 - 29+00	192	10"
PROJECT TOTAL	192	

BITUMINOUS MATERIALS (PRIME COAT)		
STATION	GALLON	REMARKS
ELIZABETH SCALES MOUND ROAD LT. STA. 21+40 - 29+00	135	1 APPL @ .4 GAL/SY ON AGG
LT. STA. 21+40 - 29+00	68	2 APPL @ .1 GAL/SY ON BIT
PROJECT TOTAL	203	

HOT-MIX ASPHALT BINDER COURSE, IL-19.0, N50		
STATION	TON	REMARKS
ELIZABETH SCALES MOUND ROAD LT. STA. 21+40 - 29+00	107	5 1/2"
PROJECT TOTAL	107	

HOT-MIX ASPHALT SURFACE COURSE, MIX "C" N50		
STATION	TON	REMARKS
ELIZABETH SCALES MOUND ROAD LT. STA. 21+40 - 29+00	29	1 1/2"
PROJECT TOTAL	29	

SAW CUTS		
STATION	FOOT	REMARKS
ELIZABETH SCALES MOUND ROAD LT. STA. 21+40	4	BIT SURFACE
LT. STA. 21+40 - 29+00	760	BIT SURFACE
LT. STA. 29+00	4	BIT SURFACE
PROJECT TOTAL	768	

AGGREGATE SHOULDERS, TYPE A		
STATION	TON	REMARKS
ELIZABETH SCALES MOUND ROAD LT. STA. 21+40 - 29+00	115	6"
PROJECT TOTAL	115	

PIPE CULVERTS, CLASS D, TYPE 3 36"		
STATION	FOOT	REMARKS
ELIZABETH SCALES MOUND ROAD LT. STA. 26+23 - 26+55	55	
PROJECT TOTAL	55	

PLAN
SERIALIZED
PLOTTED
CHECKED
DATE
BY
NOTE BOOK
NO.

PROFILE
SERIALIZED
PLOTTED
CHECKED
DATE
BY
NOTE BOOK
NO.

FILE: S:\PROJECTS\2810\1313018_1402\Drawings\Quantity\Quantity.dwg



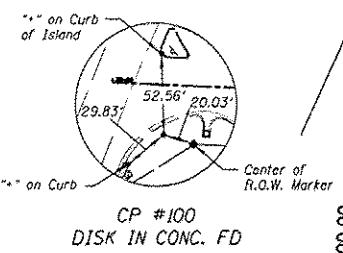
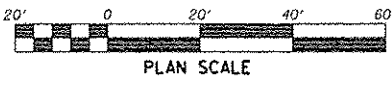
DESIGNED -	REVISED -
DRAWN -	REVISED -
CHECKED -	REVISED -
DATE -	REVISED -

JO DAVIESS COUNTY
ELIZABETH SCALES MOUND ROAD
SLOPE STABILITY

SCHEDULE OF QUANTITIES

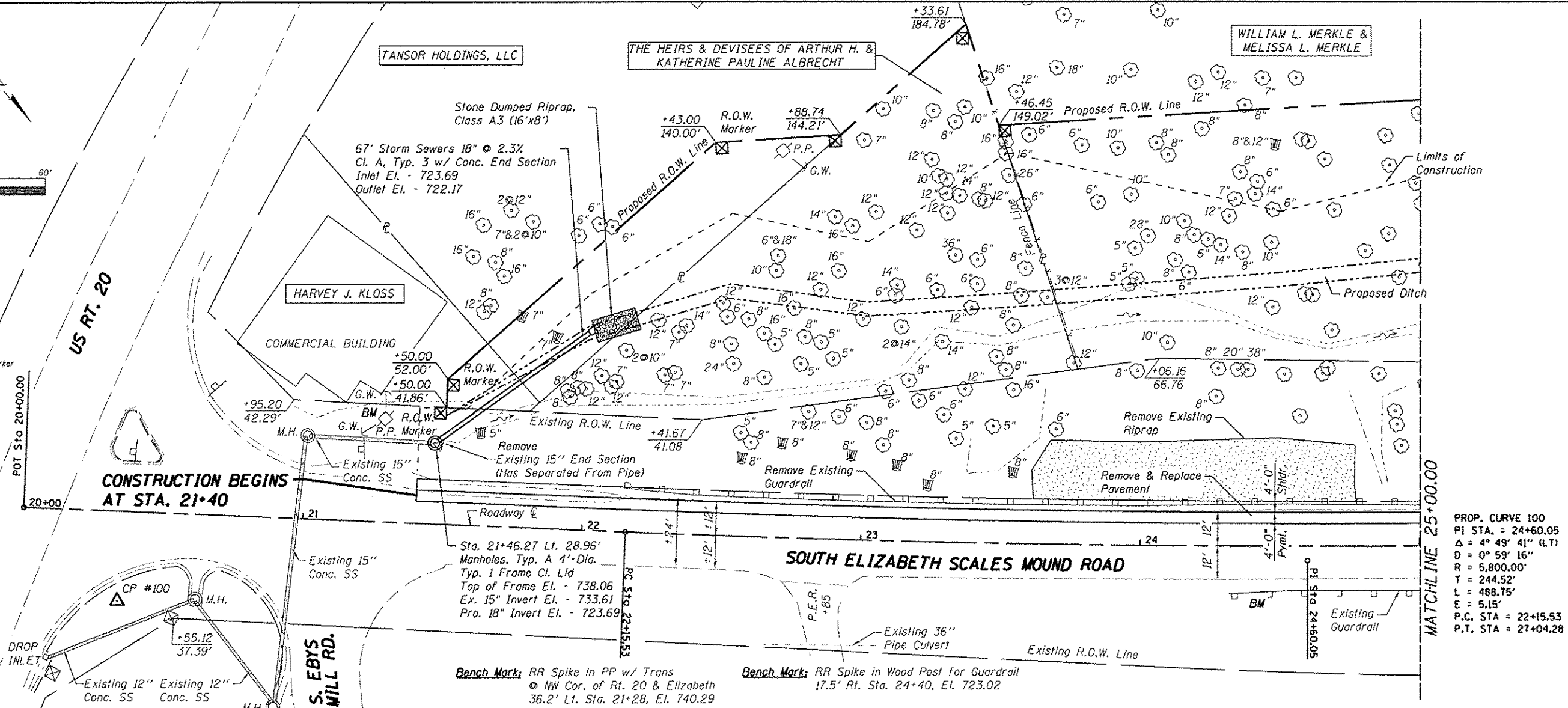
SHEET NO. 1 OF 2 SHEETS

F.A.S. RTE.	SECTION	COUNTY	TOTAL SHEETS	SHEET NO.
071	10-00136-00-GE	JO DAVIESS	20	04
WHA* 1313D10			CONTRACT NO. 85566	
[ILLINOIS] FED. AID PROJECT ER-66711(2)				

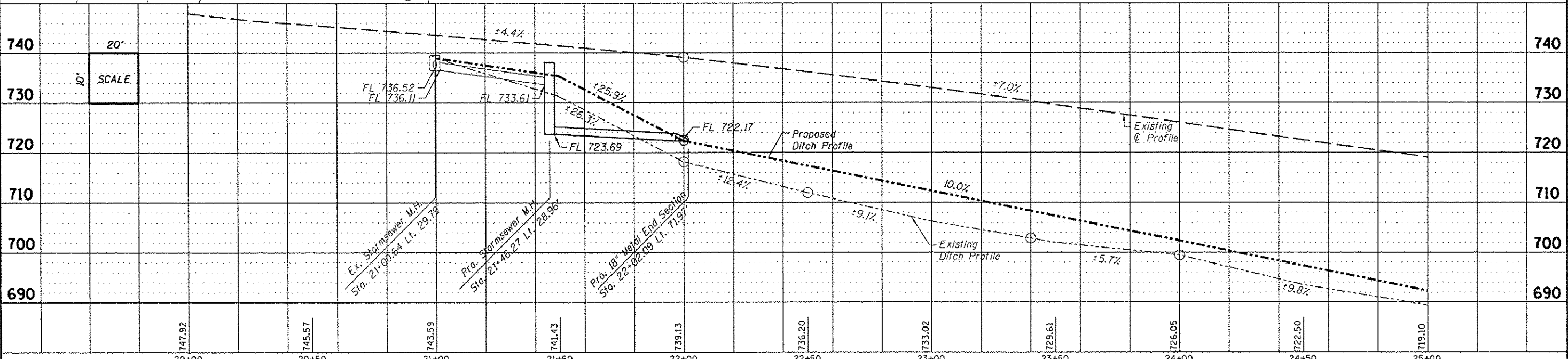


DATE	
BY	
REVISIONS	
NO.	
DATE	
BY	
REVISIONS	
NO.	
DATE	
BY	
REVISIONS	
NO.	

DATE	
BY	
REVISIONS	
NO.	
DATE	
BY	
REVISIONS	
NO.	
DATE	
BY	
REVISIONS	
NO.	



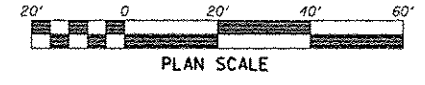
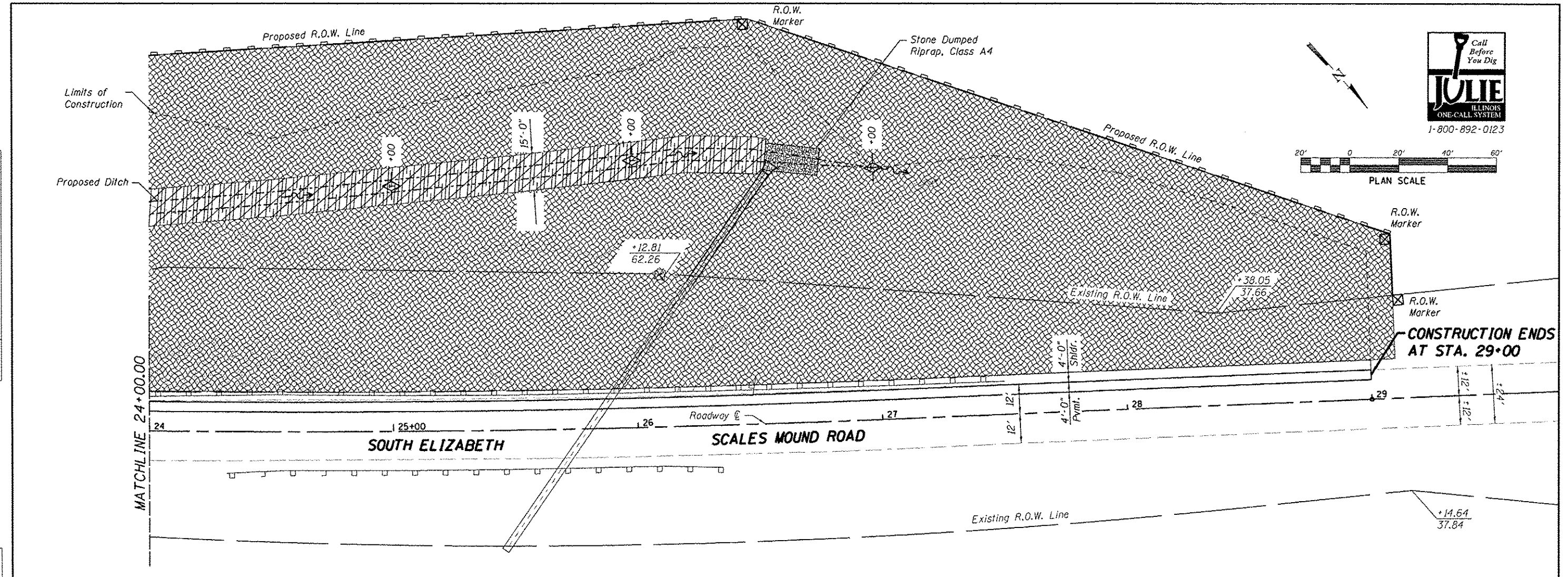
PROP. CURVE 100
 PI STA. = 24+60.05
 $\Delta = 4^\circ 49' 41''$ (LT)
 $D = 0^\circ 59' 16''$
 $R = 5,800.00'$
 $L = 244.52'$
 $E = 488.75'$
 $F = 5.15'$
 P.C. STA = 22+15.53
 P.T. STA = 27+04.28



	DESIGNED -	REVISED -	JO DAVIESS COUNTY ELIZABETH SCALES MOUND ROAD SLOPE STABILITY	PLAN & PROFILE SCALE: 1" = 20'-0" SHEET NO. 1 OF 2 SHEETS STA. 20+00.00 TO STA. 25+00.00	F.A.S. RTE. 071 SECTION 10-00136-00-GE COUNTY JO DAVIESS TOTAL SHEETS 20 SHEET NO. 06
	DRAWN -	REVISED -			
	CHECKED -	REVISED -			
	DATE -	REVISED -			

PLAN	DATE
REVISIONS	BY
NO.	
NO.	
NO.	
NO.	
NO.	
NO.	
NO.	
NO.	
NO.	

PROFILE	DATE
REVISIONS	BY
NO.	
NO.	
NO.	
NO.	
NO.	
NO.	
NO.	
NO.	
NO.	



CONSTRUCTION ENDS AT STA. 29+00

LEGEND

- Perimeter Erosion Barrier
- Inlet Protection
- Temporary Ditch Checks
- Erosion Control Blanket & Seeding, Class 2
- Heavy Duty Erosion Control Blanket & Seeding, Class 2
- Stone Dumped Riprap
- Drainage Flow

EROSION CONTROL NOTES

Temporary erosion control seeding shall be applied at a rate of 100 lbs. /acres.

Erosion Control Blanket shall be installed to all disturbed areas with slopes equal to or greater than 4V:5H and in critical areas (i.e. detention basin perimeters, streambanks, berms, etc.) immediately upon final grading.

All adjacent streets must be kept clear of debris, inspected daily and cleaned when necessary.

All soil erosion and sediment control practices are referenced from the Illinois Urban Manual.

Temporary Ditch Checks shall comply with Section 280 of the Standard Specifications for Road and Bridge Construction and Standard 280001 located in the Proposal. Temporary Ditch Checks shall be aggregate.

Temporary Ditch Checks shall be placed of 100' maximum centers and shall be placed at stations called out in the Schedule of Quantities or as directed by the Engineer.

Erosion Control Blanket shall be placed in ditches as shown on this Erosion Control Plan Sheet and in accordance with Section 251 of the Standard Specifications for Road and Bridge Construction.

The use of green dye in the Erosion Control Blanket is not acceptable.

The use of asphalt as a binder is not acceptable.

All items shall be constructed as shown on Standard 280001 and as directed by the Engineer. Maintenance and cleaning of the erosion control items shall be included in the respective erosion control pay item.

FILE : S:\PROJECTS\2818\2818_JoDavies\2818_Civil\DESIGN\S\WPPP.dwg



DESIGNED -	REVISD -
DRAWN -	REVISD -
CHECKED -	REVISD -
DATE -	REVISD -

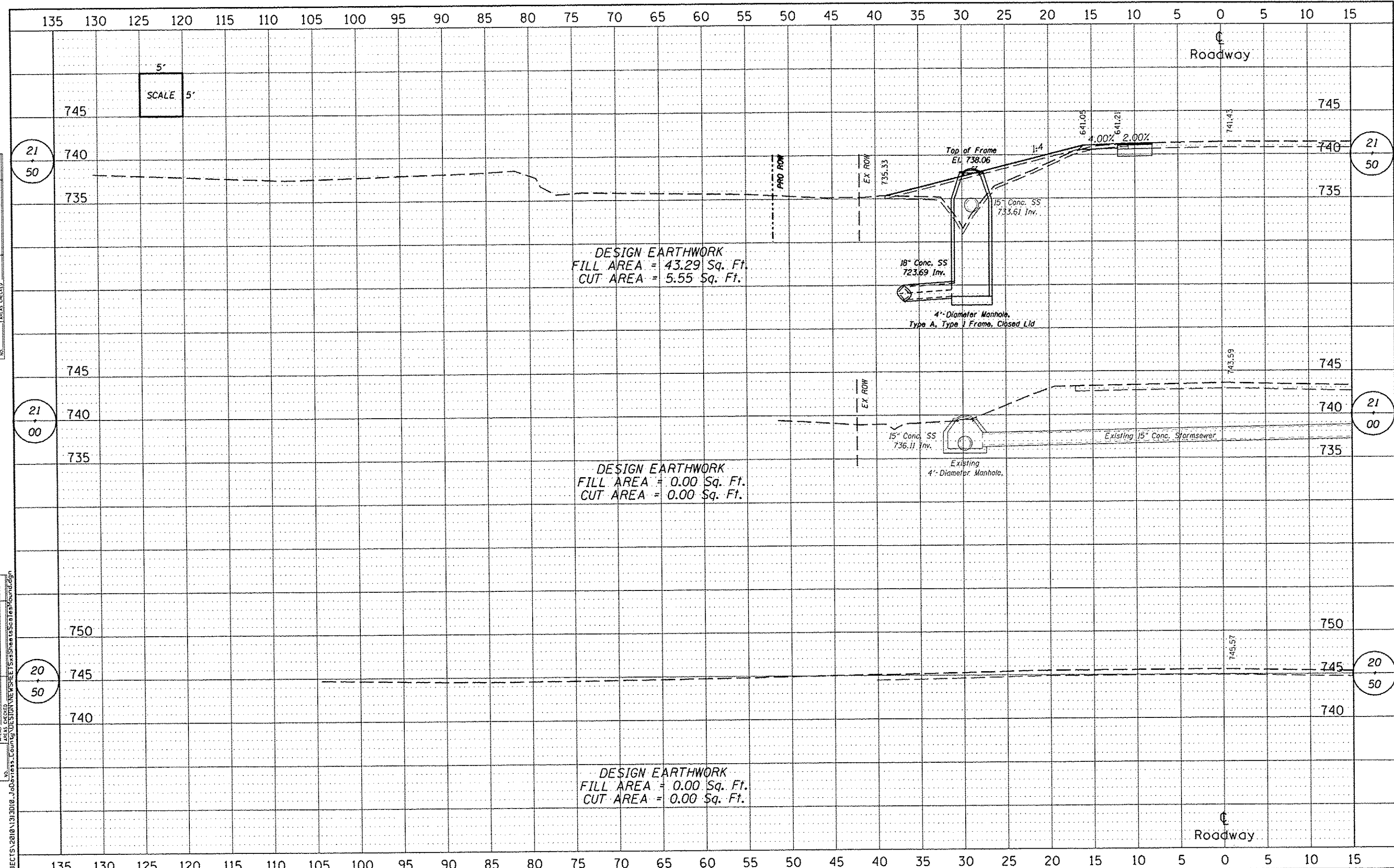
**JO DAVIESS COUNTY
ELIZABETH SCALES MOUND ROAD
SLOPE STABILITY**

STORM WATER POLLUTION PREVENTION PLAN
SCALE: 1" = 20'-0" SHEET NO. 2 OF 2 SHEETS STA. 24+00.00 TO STA. 29+50.00

F.A.S. RTE.	SECTION	COUNTY	TOTAL SHEETS	SHEET NO.
071	10-00136-00-GE	JO DAVIESS	20	09
WHA* 1313D10			CONTRACT NO. 85566	
[ILLINOIS] FED. AID PROJECT ER-0071122				

DATE	
BY	
SURVEYED	
PLOTTED	
INCHES	
NOTE BOOK	
NO.	

DATE	
BY	
DESIGNED	
DRAWN	
CHECKED	
DATE	

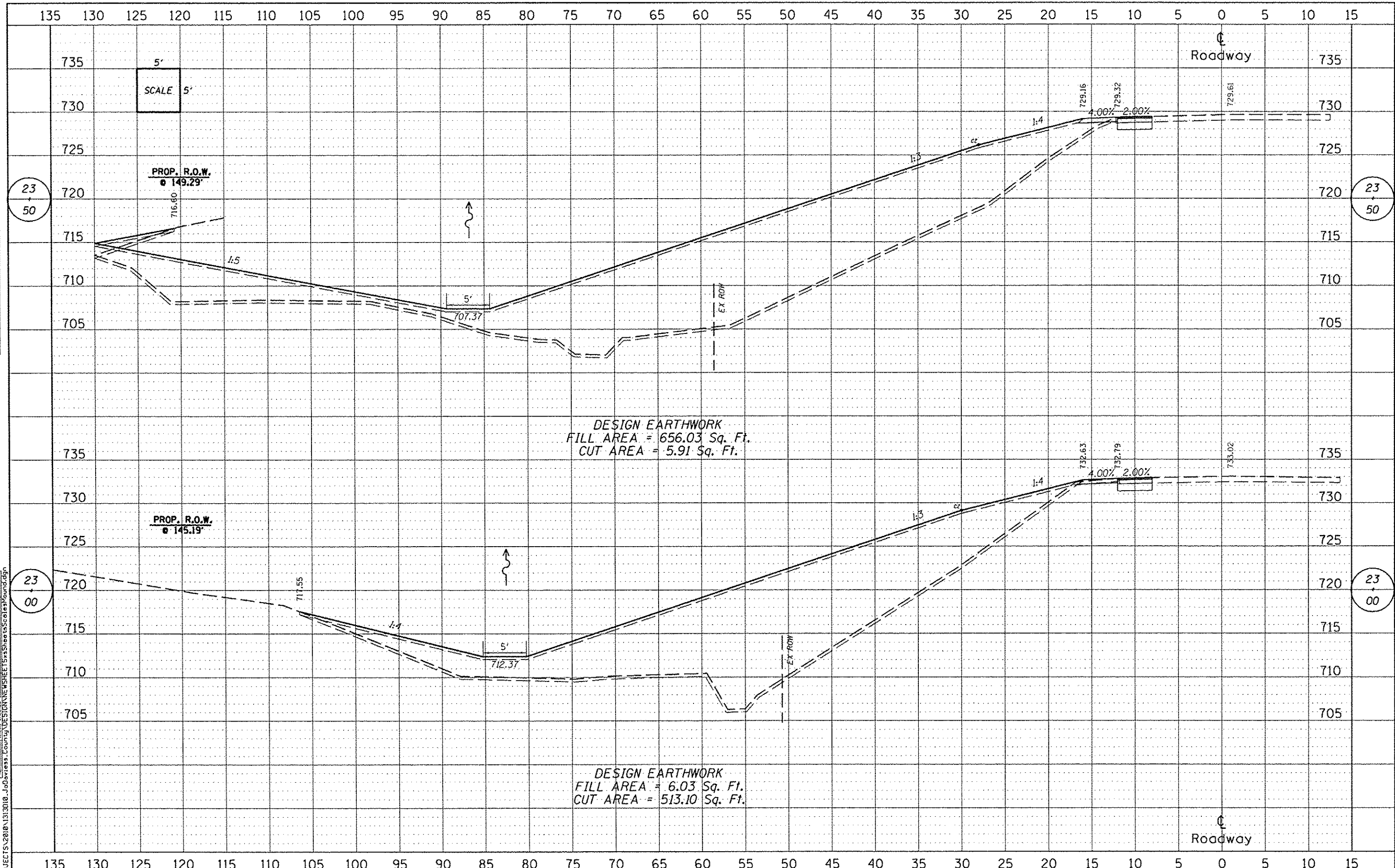


	DESIGNED - _____	REVISED - _____	JO DAVIESS COUNTY ELIZABETH SCALES MOUND ROAD SLOPE STABILITY	CROSS SECTIONS SCALE: 1" = 5'-0" SHEET NO. 1 OF 10 SHEETS STA. 20+50.00 TO STA. 21+50.00		F.A.S. RTE. 071	SECTION 10-00136-00-GE	COUNTY JO DAVIESS	TOTAL SHEETS 20	SHEET NO. 10
	DRAWN - _____	REVISED - _____				CONTRACT NO. 85566				
CHECKED - _____	REVISED - _____					ILLINOIS FED. AID PROJECT ER-0011122				
DATE - _____	REVISED - _____									

FILE = S:\PROJECTS\2810\1313010\1313010.dwg

DATE	
BY	
FINAL SURVEY	
PLOTTED	
NOTE BOOK	
NO.	

DATE	
BY	
ORIGINAL SURVEY	
PLOTTED	
NOTE BOOK	
NO.	



WILETT HOFMANN ASSOCIATES INC.
 ENGINEERING ARCHITECTURE LAND SURVEYING
 809 EAST 2ND STREET, DODD, IL 61001-0067
 T. 815.244.1881 FAX. 815.244.1882

DESIGNED -	REVISIED -
DRAWN -	REVISIED -
CHECKED -	REVISIED -
DATE -	REVISIED -

JO DAVIESS COUNTY
ELIZABETH SCALES MOUND ROAD
SLOPE STABILITY

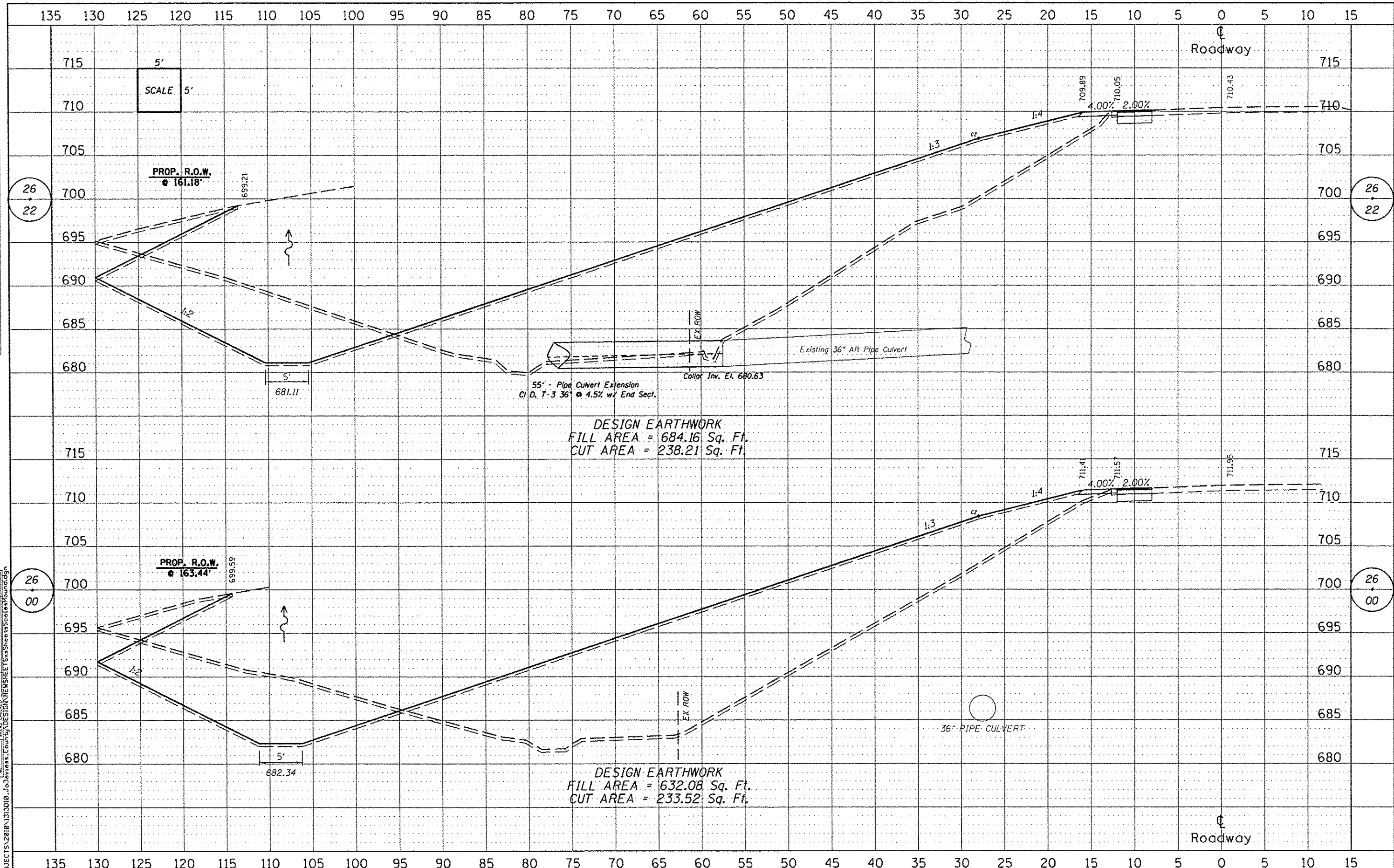
CROSS SECTIONS
 SCALE: 1" = 5'-0" SHEET NO. 3 OF 10 SHEETS STA. 23+00.00 TO STA. 23+50.00

F.A.S. RTE.	SECTION	COUNTY	TOTAL SHEETS	SHEET NO.
071	10-00136-00-GE	JO DAVIESS	20	12
WHA* 1313D10			CONTRACT NO. 85566	
[ILLINOIS] FED. AID PROJECT ER-0011121				

FILE = S:\PROJECTS\2010\1313D10 - Jo Daviess County\DESIGN\NEW\SHEET\1313D10\Scale\Road.dgn

DATE	
BY	
FINAL SURVEY	
SUPPLEMENTED	
PLOTTED	
TEMPLATE	
NOTE BOOK	
AREAS	
REVISIONS	
NO.	

DATE	
BY	
ORIGINAL SURVEY	
SUPPLEMENTED	
PLOTTED	
TEMPLATE	
NOTE BOOK	
AREAS	
REVISIONS	
NO.	



DESIGN EARTHWORK
 FILL AREA = 684.16 Sq. Ft.
 CUT AREA = 238.21 Sq. Ft.

DESIGN EARTHWORK
 FILL AREA = 632.08 Sq. Ft.
 CUT AREA = 233.52 Sq. Ft.

WILLET HOFMANN ASSOCIATES INC
 ENGINEERING ARCHITECTURE LAND SURVEYING
 804 SAS 2ND STREET, DAVENP, IL 61201-0362
 P 815-284-3381 FAX 815-284-3382

DESIGNED -	REVISIONS -
DRAWN -	REVISIONS -
CHECKED -	REVISIONS -
DATE -	REVISIONS -

JO DAVIESS COUNTY
 ELIZABETH SCALES MOUND ROAD
 SLOPE STABILITY

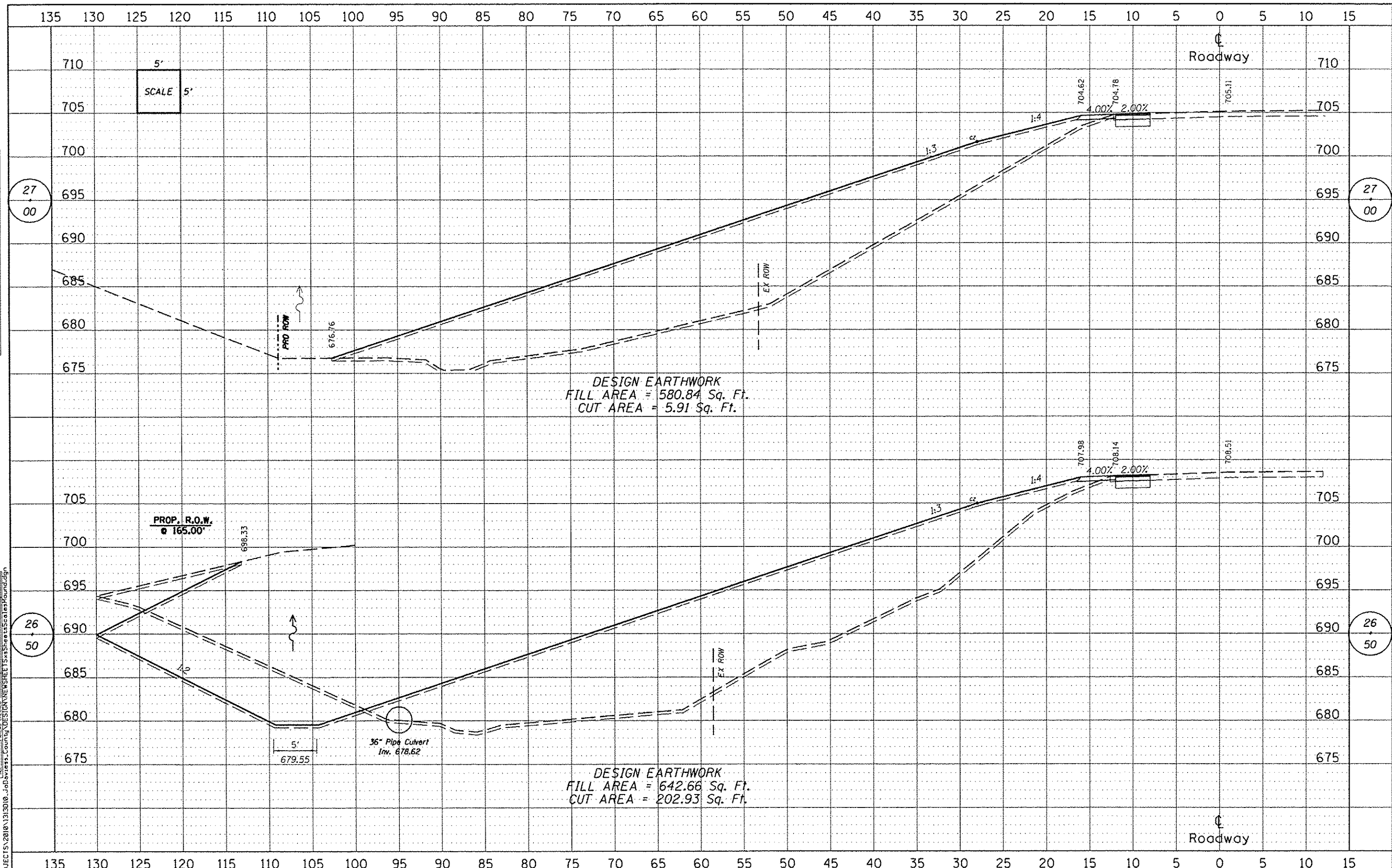
CROSS SECTIONS
 SCALE: 1" = 5'-0" SHEET NO. 6 OF 10 SHEETS STA. 26+00.00 TO STA. 26+22.00

F.A.S. RTE.	SECTION	COUNTY	TOTAL SHEETS	SHEET NO.
071	10-00136-00-GE	JO DAVIESS	20	15
WHA* 1313010			CONTRACT NO. 85566	
[ILLINOIS] FED. AID PROJECT ER-0071(12)				

FILE = S:\PROJECTS\2010\1313010\JO Daviess County DESIGN SHEETS\15 Streets Sections\Roadway\Design

DATE	
BY	
FINAL SURVEY	
PLOTTED	
NOTE BOOK	
AREAS	
REVISIONS	

DATE	
BY	
FINAL SURVEY	
PLOTTED	
NOTE BOOK	
AREAS	
REVISIONS	




WILLET-HOFMANN ASSOCIATES INC.
 ENGINEERING ARCHITECTURE LAND SURVEYING
 309 EAST 24th STREET, DODON, IL 61021-9362
 P. 815-244-3363 FAX 815-244-3364

DESIGNED -	REVISIONS -
DRAWN -	REVISIONS -
CHECKED -	REVISIONS -
DATE -	REVISIONS -

JO DAVIESS COUNTY
ELIZABETH SCALES MOUND ROAD
SLOPE STABILITY

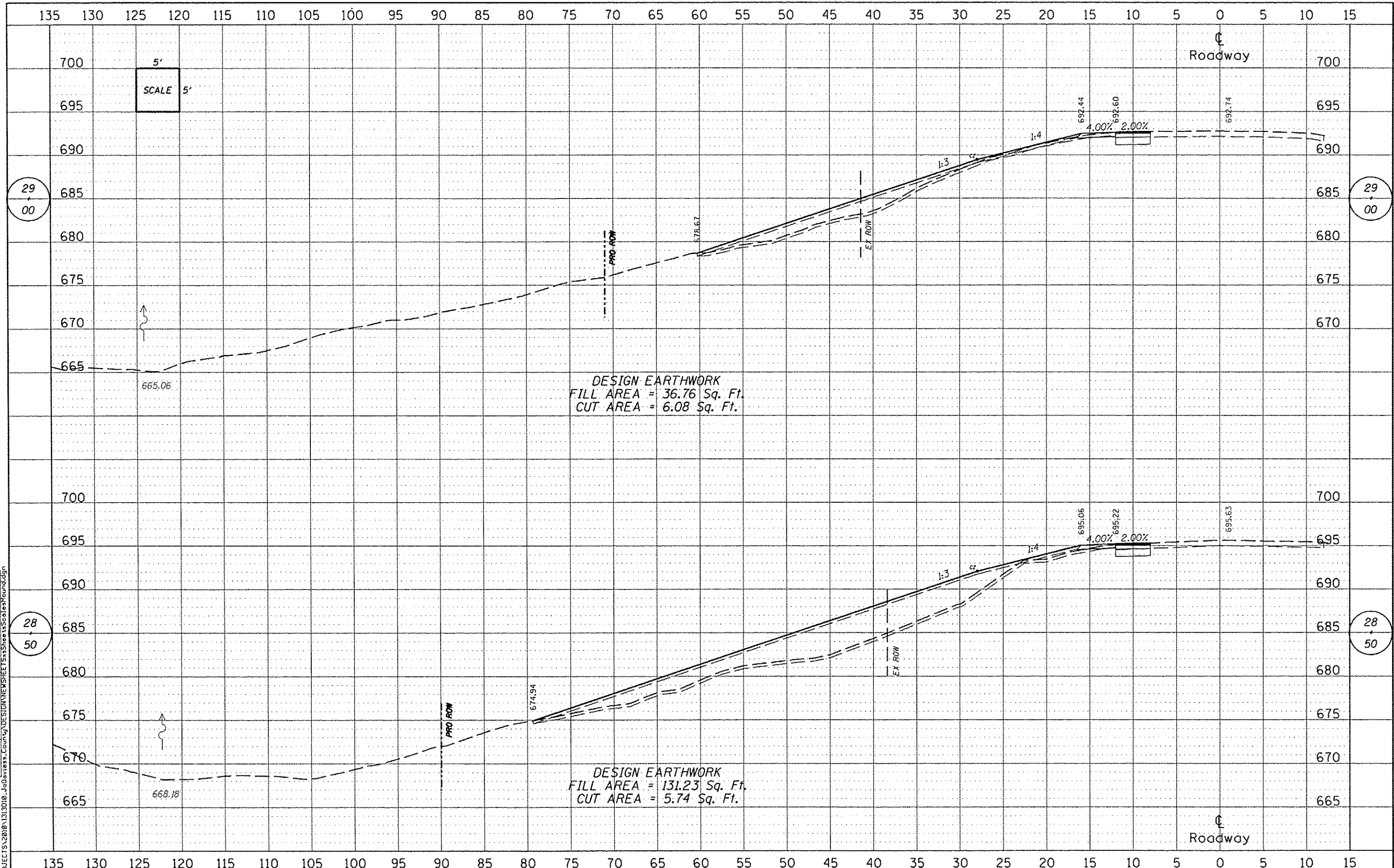
CROSS SECTIONS
 SCALE: 1" = 5'-0" SHEET NO. 7 OF 10 SHEETS STA. 26+50.00 TO STA. 27+00.00

F.A.S. RTE.	SECTION	COUNTY	TOTAL SHEETS	SHEET NO.
071	10-00136-00-GE	JO DAVIESS	20	16
WHA* 1313010			CONTRACT NO. 85566	
ILLINOIS FED. AID PROJECT ER-00111221				

FILE: S:\PROJECTS\2010\1313010\JobDrawings\Cross\DESIGN\NEWSHEETS\ScalesSlopes\Roadway.dgn

DATE	
BY	
DESIGNED	
DRAWN	
CHECKED	
DATE	

DATE	
BY	
DESIGNED	
DRAWN	
CHECKED	
DATE	




WILLET HOFMANN ASSOCIATES INC
 ENGINEERING ARCHITECTURE LAND SURVEYING
 405 EAST 2ND STREET, DECATUR, IL 62521-4267
 P. 312-244-3381 F. 312-244-3382

DESIGNED	-	REVISIED	-
DRAWN	-	REVISIED	-
CHECKED	-	REVISIED	-
DATE	-	REVISIED	-

JO DAVIESS COUNTY
ELIZABETH SCALES MOUND ROAD
SLOPE STABILITY

CROSS SECTIONS
 SCALE: 1" = 5'-0" SHEET NO. 9 OF 10 SHEETS STA. 28+50.00 TO STA. 29+00.00

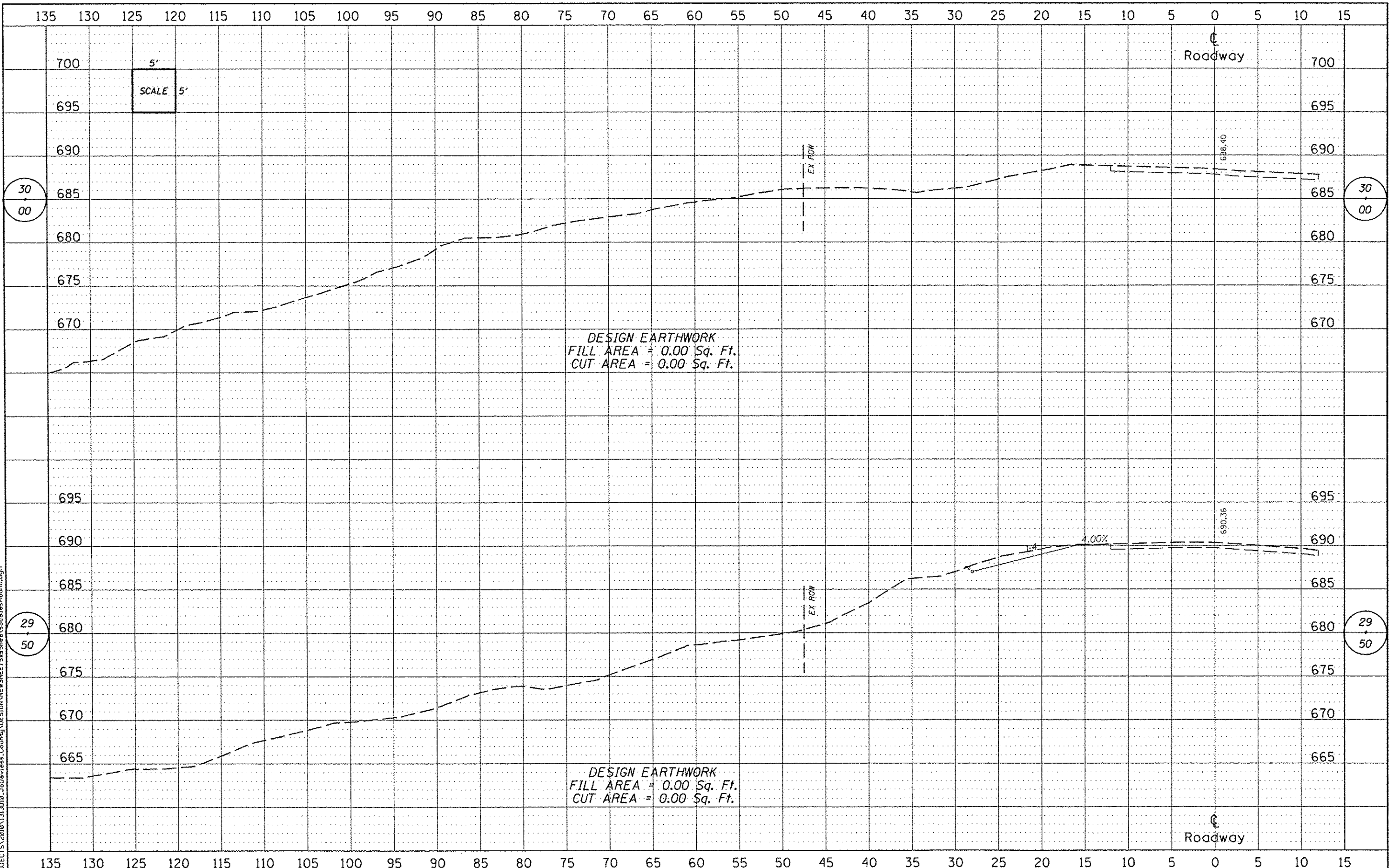
F.A.S. RTE.	SECTION	COUNTY	TOTAL SHEETS	SHEET NO.
071	10-00136-00-GE	JO DAVIESS	20	18
WHA* 1313010			CONTRACT NO. 85566	
ILLINOIS FED. AID PROJECT ER-007111221				

FILE # S:\PROJECTS\2010\1313010\JoDaviesCounty\DESIGN\NEWSHEETS\ScaleSheet\ScaleSheet.dgn

DATE	
BY	
FINAL SURVEY	
SURVEY	
PROFIT	
TEMPLATE	
NOTE BOOK	
AREAS	
AREAS CHECKED	

DATE	
BY	
ORIGINAL SURVEY	
SURVEY	
PROFIT	
TEMPLATE	
NOTE BOOK	
AREAS	
AREAS CHECKED	

FILE: S:\PROJECTS\2010\1313010 - Jo Daviess County DESIGN SHEETS\Sheets\33\331015\331015.dgn



DESIGN EARTHWORK
 FILL AREA = 0.00 Sq. Ft.
 CUT AREA = 0.00 Sq. Ft.

DESIGN EARTHWORK
 FILL AREA = 0.00 Sq. Ft.
 CUT AREA = 0.00 Sq. Ft.



DESIGNED -	REVISD -
DRAWN -	REVISD -
CHECKED -	REVISD -
DATE -	REVISD -

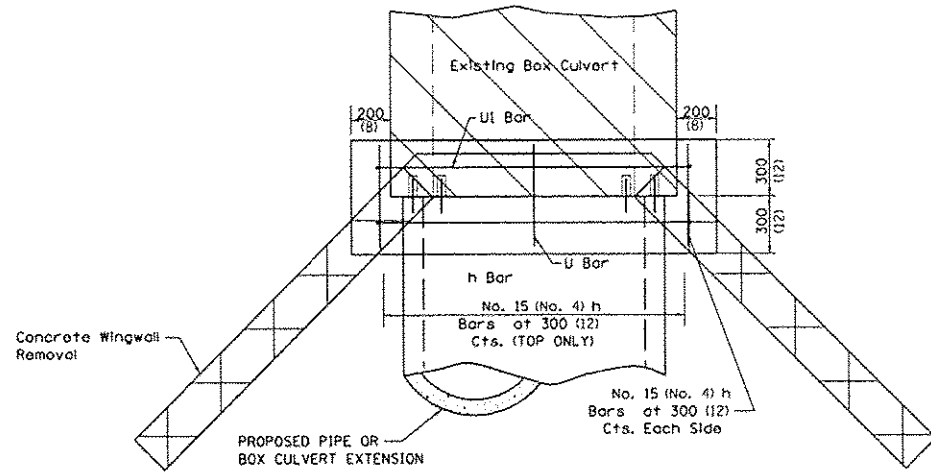
**JO DAVIESS COUNTY
 ELIZABETH SCALES MOUND ROAD
 SLOPE STABILITY**

CROSS SECTIONS
 SCALE: 1" = 5'-0" SHEET NO. 10 OF 10 SHEETS STA. 29+50.00 TO STA. 30+00.00

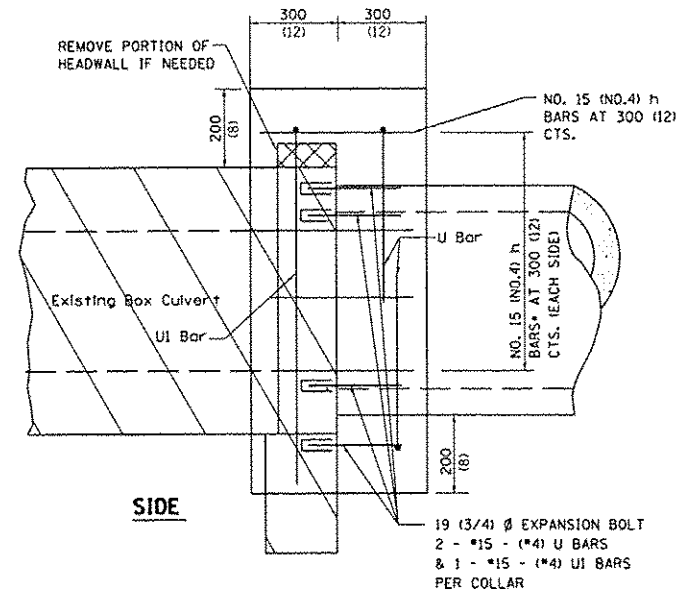
F.A.S. RTE.	SECTION	COUNTY	TOTAL SHEETS	SHEET NO.
071	10-00136-00-GE	JO DAVIESS	20	19
WHA* 1313010		CONTRACT NO. 85566		
ILLINOIS FED. AID PROJECT ER-007111221				

CONCRETE COLLARS FOR PIPE OR BOX CULVERT EXTENSIONS

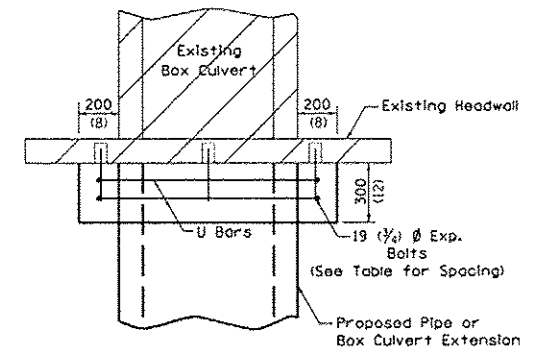
DATE	
BY	
DESIGNED	
DRAWN	
CHECKED	
DATE	
NO.	
PLAN	
NO.	
NOTE BOOK	
NO.	
FILE NAME	



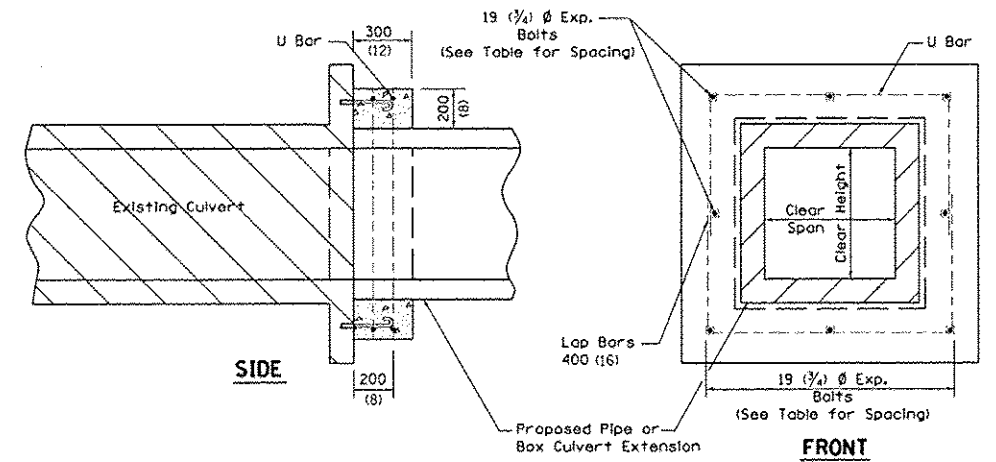
PLAN OF CULVERT WITH ANGLED WING WALLS



SIDE

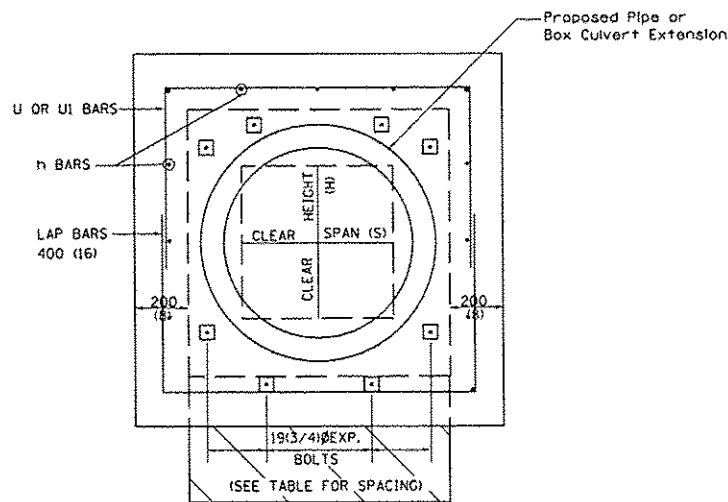


PLAN OF CULVERT WITH STRAIGHT HEADWALL

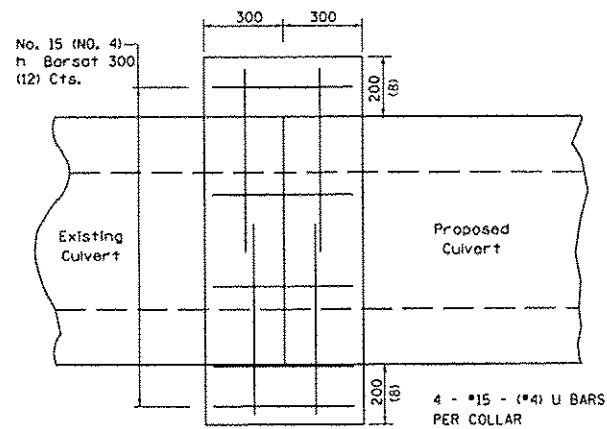


SIDE

FRONT



FRONT

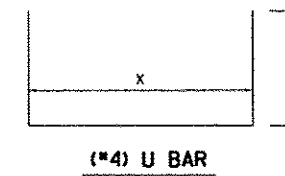


CULVERT CONNECTION WITHOUT EXISTING HEADWALL

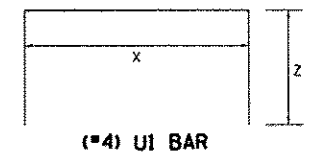
PLACEMENT DETAILS FOR EXPANSION BOLTS

H OR S	NUMBER OF EXPANSION BOLTS REQUIRED PER SIDE			
	EXTENSIONS < 4.57m (15')		EXTENSIONS > 4.57m (15')	
	NUMBER	SPACING	NUMBER	SPACING
600 (24)	*		*	
750 (30)	2	450 (18)	2	450 (18)
900 (36)	2	600 (24)	2	600 (24)
1200 (48)	3	450 (18)	3	450 (18)
1500 (60)	4	400 (16)	3	600 (24)
1800 (72)	5	375 (15)	4	500 (20)
2100 (84)	5	450 (18)	4	600 (24)
2400 (96)	6	375 (15)	5	525 (21)
2700 (108)	6	475 (19)	5	600 (24)
3000 (120)	7	450 (18)	6	525 (21)
3300 (132)	8	425 (17)	6	600 (24)
3600 (144)	8	475 (19)	7	550 (22)

* MINIMUM ONE PER SIDE



(#4) U BAR



(#4) U1 BAR

General Notes

- All dimensions are in inches (millimeters) unless otherwise shown.
- Concrete Collars shall be constructed of Class SI Concrete in accordance with Section 503 of the Standard Specifications.
- Reinforcement bars shall conform to Section 508 of the Standard Specifications.

DATE	
BY	
DESIGNED	
DRAWN	
CHECKED	
DATE	
NO.	
PROFILE	
NO.	
NOTE BOOK	
NO.	
FILE NAME	

FILE 1 - SANPROJECT\SUBDIR\1313010_132\Drawings\County\DESIGN\WHA Standard 651.dgn



DESIGNED -	REVISD -
DRAWN -	REVISD -
CHECKED -	REVISD -
DATE -	REVISD -

JO DAVIESS COUNTY
ELIZABETH SCALES MOUND ROAD
SLOPE STABILITY

WHA STANDARD 651

SHEET NO. 1 OF 1 SHEETS

F.A.S. RTE.	SECTION	COUNTY	TOTAL SHEETS	SHEET NO.
071	10-00136-00-GE	JO DAVIESS	20	20
WHA* 1313010			CONTRACT NO. 85566	
ILLINOIS FED. AID PROJECT ER-00TH122				