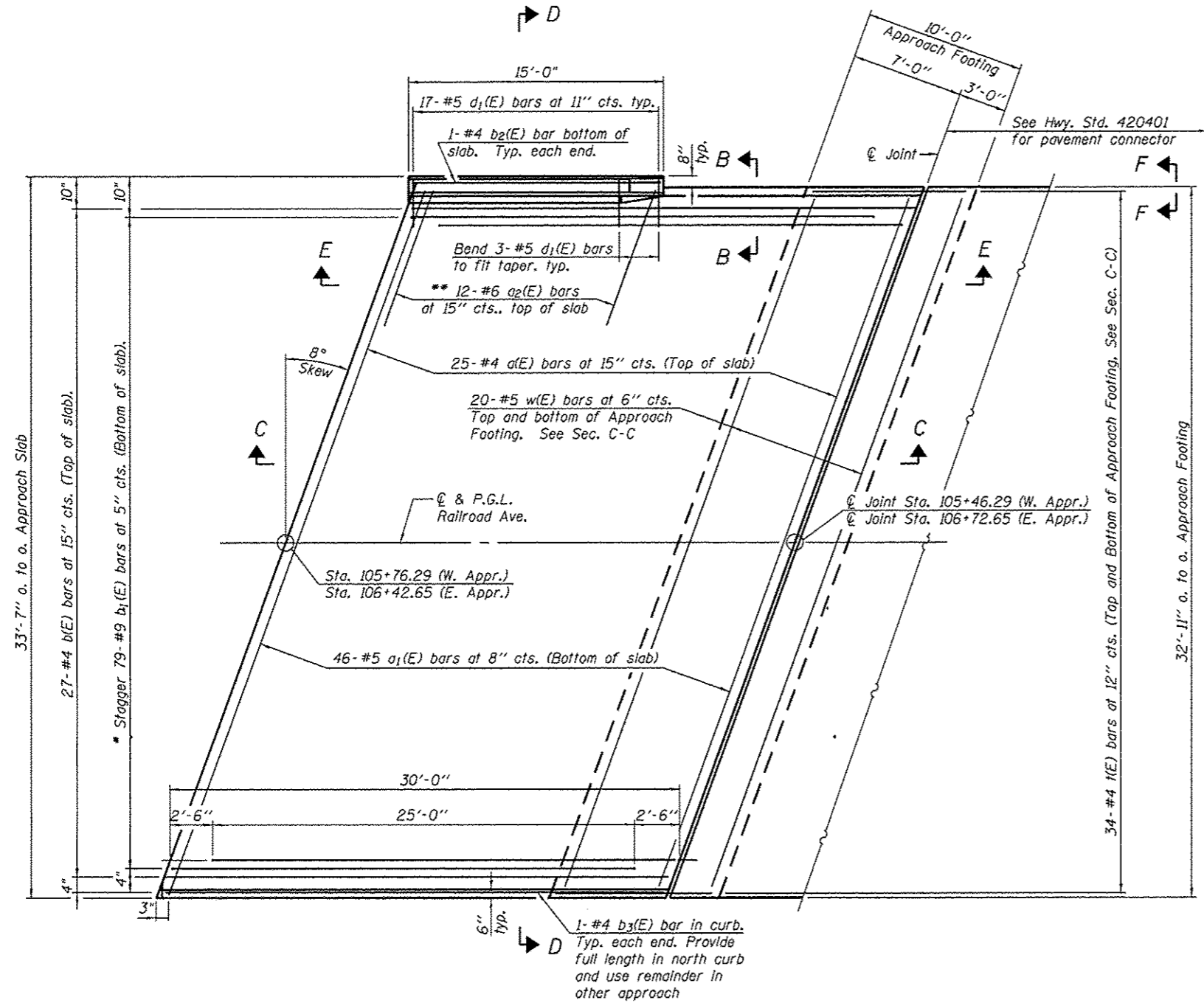


Notes:
See sheet S-11 for Sections C-C & D-D and View E-E.
a(E) and a₁(E) bar spacings measured along ϕ Rdwy.

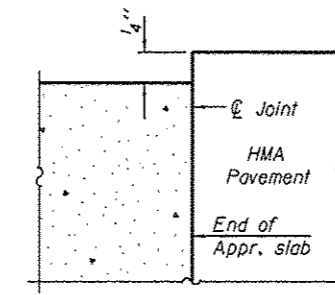
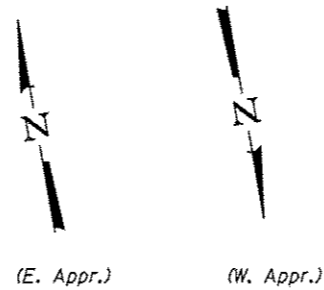
*** Cost included with Concrete Superstructure.



PLAN

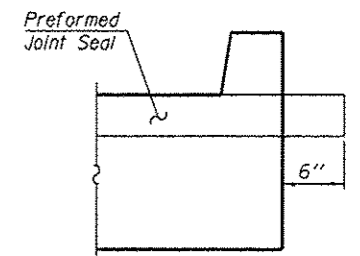
East Approach shown. West similar, but opposite hand

- * Tilt #9 b₁(E) bars as required to maintain clearance.
- ** Space between a(E) bars, typ. each parapet.



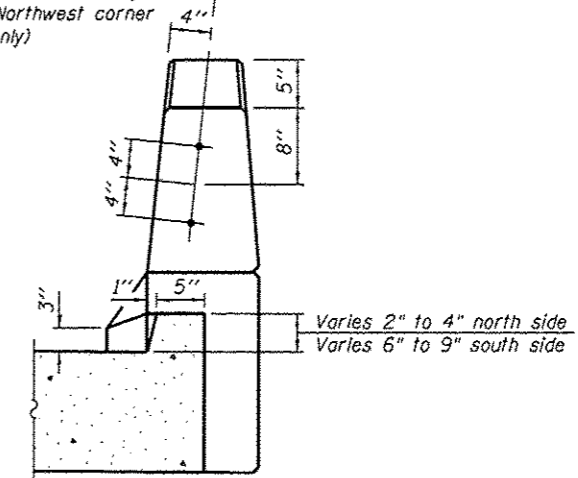
FLEXIBLE PAVEMENT

DETAIL A



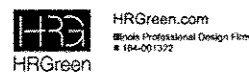
VIEW F-F

ϕ 1" ϕ Anchor bolts
Type 5 terminal connections only.
(Northwest corner only)



VIEW B-B

COMPANY NAME: Kevin M. Arft
PROJECT CONTACT: City of Rockford
CLIENT: City of Rockford
DATE PLOTTED: 2/18/2014 1:26:09 PM
FILE NAME: 86130054-App-det-01.dgn
PLOT DRIVER: pdf.DET-T117.dpt
PEN TABLE: Struct.tbl;17.m



USER NAME * whood	DESIGNED - KMA	REVISED -
PLOT SCALE *	CHECKED - RGD	REVISED -
PLOT DATE * 2/18/2014	DRAWN - WJH	REVISED -
	CHECKED - 2/18/14	REVISED -

**STATE OF ILLINOIS
DEPARTMENT OF TRANSPORTATION**

**BRIDGE APPROACH SLAB DETAILS
STRUCTURE NO. 101-6148**

SHEET NO. 5-10 OF 5-19 SHEETS

F.A. RTE.	SECTION	COUNTY	TOTAL SHEETS	SHEET NO.
3259	11-00590-00-BR	WINNEBAGO	32	20
CONTRACT NO. 8560T				
[ILLINOIS] FED. AID PROJECT				