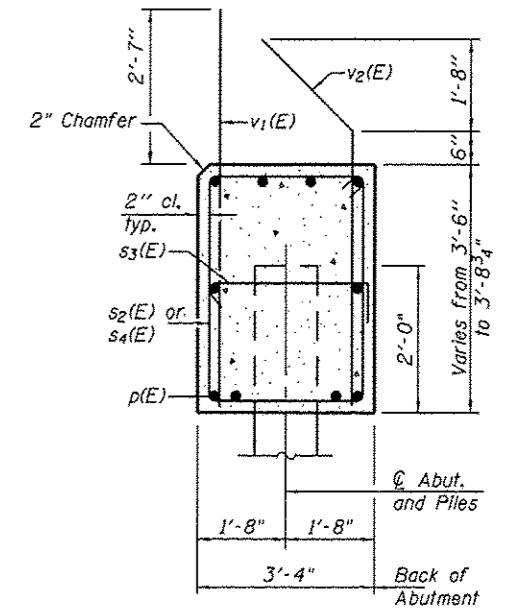
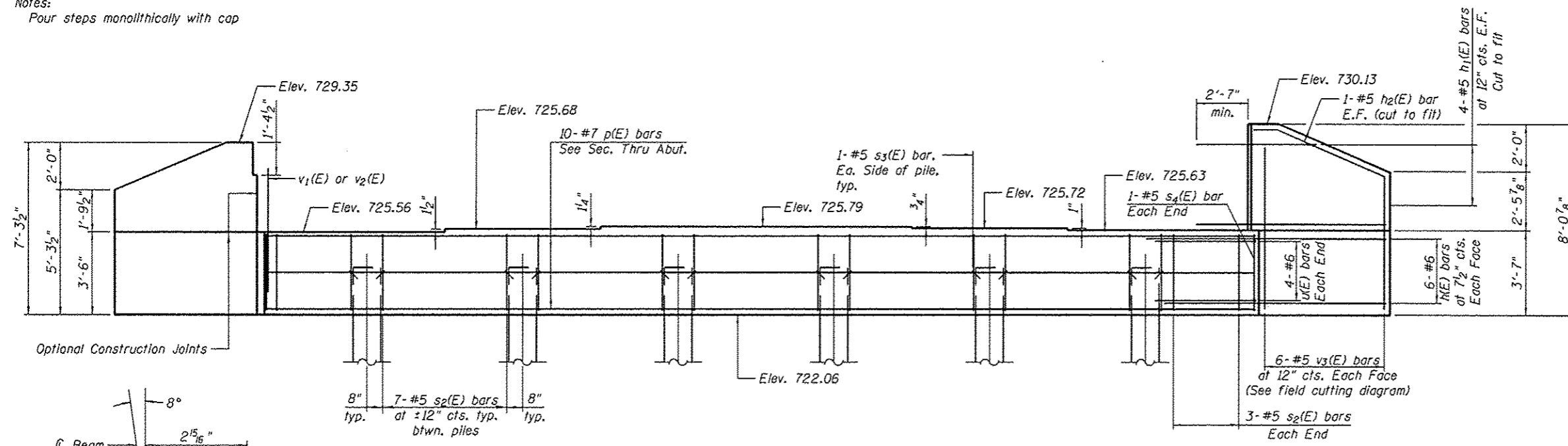
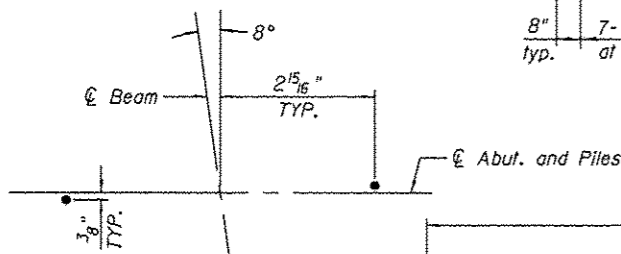


Notes:
Pour steps monolithically with cap



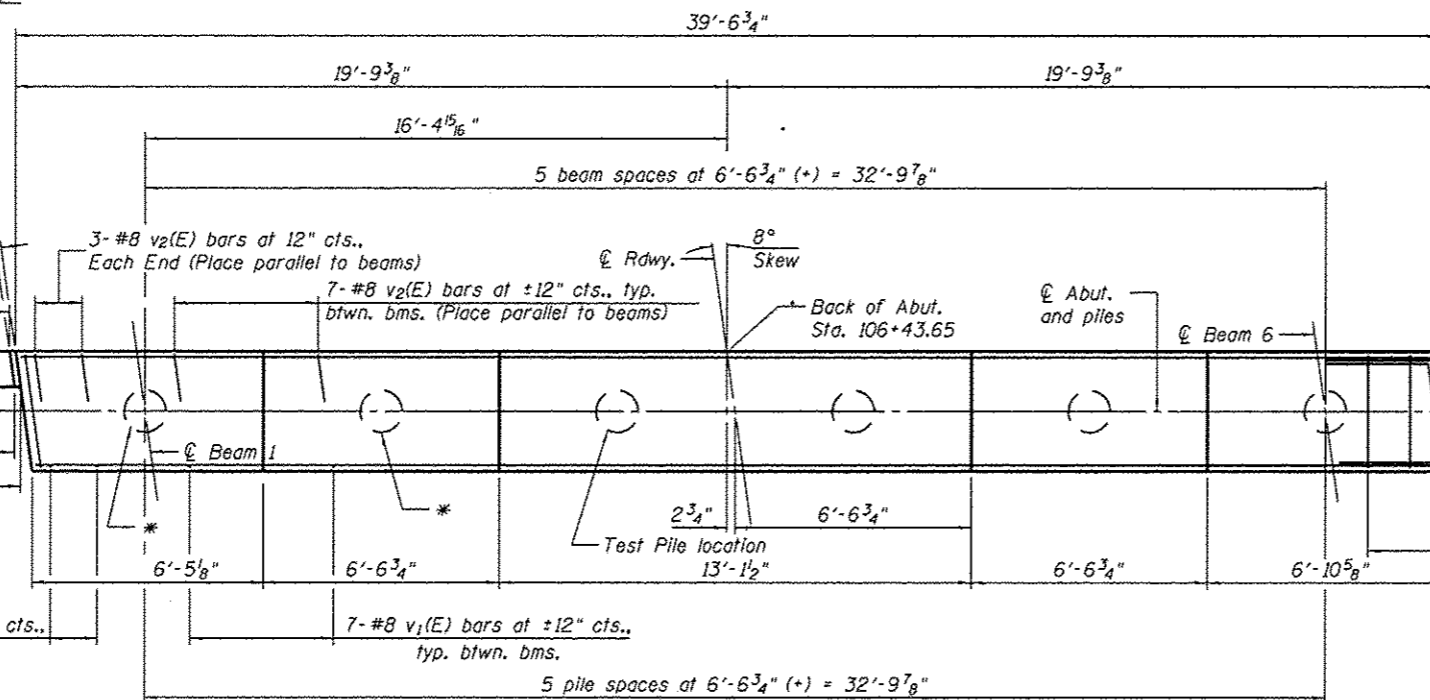
SEC. THRU ABUT.

Dimensions at right angles to abutment.

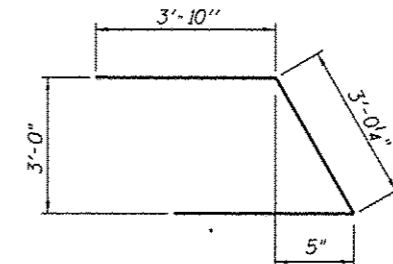


ANCHOR BOLT
DETAIL

ELEVATION



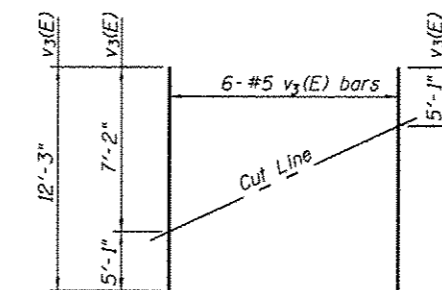
PLAN



BAR u(E)

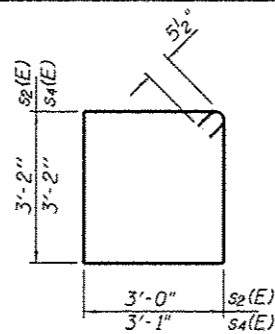
MIN. BAR LAP

#5 bar = 2'-7"
#6 bar = 3'-1"
#7 bar = 4'-2"

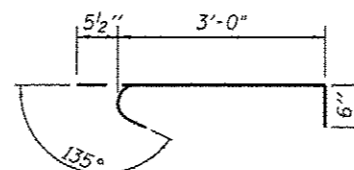


FIELD CUTTING DIAGRAM

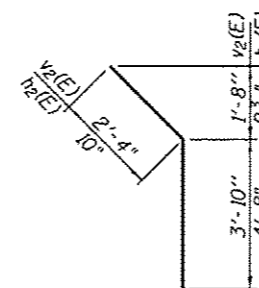
Order v3(E) full length. Cut as shown and use remainder of bars in opposite face.



BAR s2(E) & s4(E)



BAR s3(E)



BAR v2(E) & h2(E)

BILL OF MATERIAL

Bar	No.	Size	Length	Shape
h(E)	24	#6	8'-10"	—
h1(E)	16	#5	8'-4"	—
h2(E)	4	#5	5'-6"	—
p(E)	10	#7	39'-2"	—
s2(E)	41	#5	13'-3"	□
s3(E)	12	#5	4'-0"	┌
s4(E)	2	#5	13'-5"	□
u(E)	8	#6	10'-8"	┌
v1(E)	41	#8	5'-11"	—
v2(E)	41	#8	6'-2"	┌
v3(E)	12	#5	12'-3"	—
Structure Excavation			Cu. Yd.	127.2
Concrete Structures			Cu. Yd.	20.8
Reinforcement Bars, Epoxy Coated			Pound	3,530
Furnishing Metal Shell Piles 14" x 0.25"			Foot	265
Test Pile Metal Shell Piles 14" x 0.25"			Each	1
Driving Piles			Foot	265

For details of piles see sheet S-17.

Notes:

* The two (2) north piles shall be driven through 18" diameter precast holes extending to elevation 710.00 according to Article 512.09(c) of the Standard Specifications. Cost included in driving piles. Verify with field location of existing 10" water main.

COMPANY NAME: Kevin W. Arff
PROJECT CONTACT: City of Rockford
CLIENT: City of Rockford
DATE PLOTTED: 2/18/2014 11:52:22 PM
FILE NAME: 86130054-Abut-02.dgn
PLOT DRIVER: pdf.plt
PEN TABLE: Struct.tbl



USER NAME	whood	DESIGNED	KMA	REVISED	-
CHECKED	RGD	REVISIONS	-	REVISIONS	-
PLOT SCALE	#	DRAWN	WJH	REVISIONS	-
PLOT DATE	2/18/2014	CHECKED	2/18/14	REVISIONS	-

STATE OF ILLINOIS
DEPARTMENT OF TRANSPORTATION

EAST ABUTMENT
STRUCTURE NO. 101-6148

SHEET NO. 5-16 OF 5-19 SHEETS

F.A. RTE.	SECTION	COUNTY	TOTAL SHEETS	SHEET NO.
3259	11-00590-00-BR	WINNEBAGO	32	26
CONTRACT NO. 85607				
ILLINOIS FED. AID PROJECT				