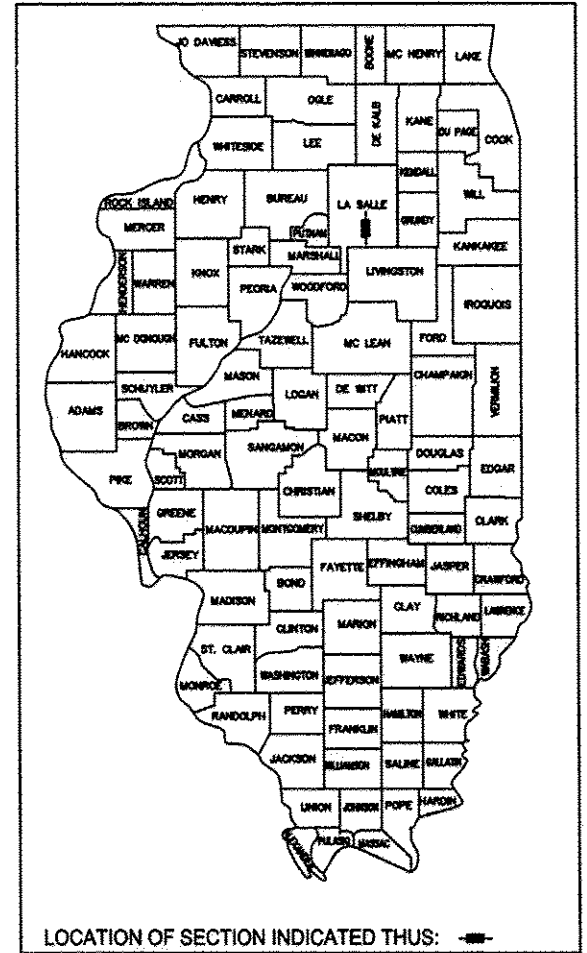


INDEX OF SHEETS

- 1 COVER SHEET
- 2 LIST OF STANDARDS, GENERAL NOTES AND LEGEND
- 3 SUMMARY OF QUANTITIES
- 4-7 SCHEDULES
- 8 TYPICAL SECTIONS
- 9-10 INTERSECTION DETAIL SHEETS
- 11 PLAN DETAIL SHEETS
- 12 PLAN AND PROFILE
- 13-15 DETAILS
- 16 CROSS SECTIONS

STATE OF ILLINOIS
DEPARTMENT OF TRANSPORTATION
DIVISION OF HIGHWAYS
**PLANS FOR PROPOSED
TARP PROJECT**
FAS 276 COUNTY HIGHWAY 29
SECTION 15-00326-00-WR
PROJECT RS-0263(104)
LASALLE COUNTY
C-93-079-13



LOCATION OF SECTION INDICATED THUS:

TRAFFIC DATA
2012 ADT = 650

DESIGN DESIGNATION
MAJOR COLLECTOR
DESIGN POLICY: 3R GUIDELINES
DESIGN SPEED: 55 MPH

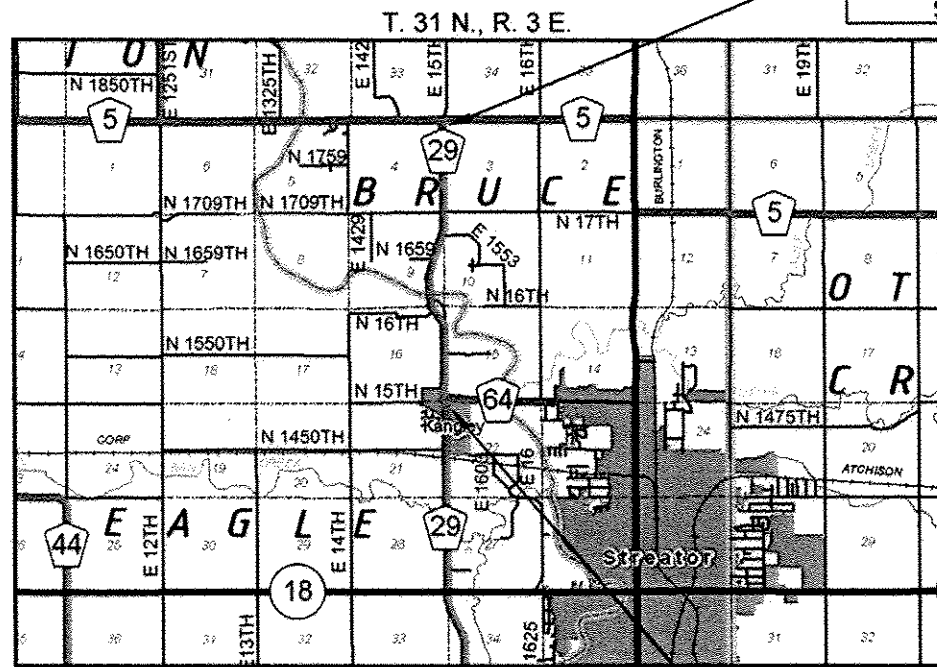
ELECTRIC
COMED
MS. NORA FERNANDEZ
123 ENERGY AVE.
ROCKFORD, IL 61109
(815) 490-2869

GAS
AGL RESOURCES
(FORMERLY NICOR)
MS. CONSTANCE LANE
1844 FERRY RD.
NAPERVILLE, IL 60563
(630) 388-3830

WATER
ILLINOIS AMERICAN
WATER COMPANY
MR. DAVID CLIFTON
120 S. STERLING ST.
STREATOR, IL 61364
(815) 672-4557

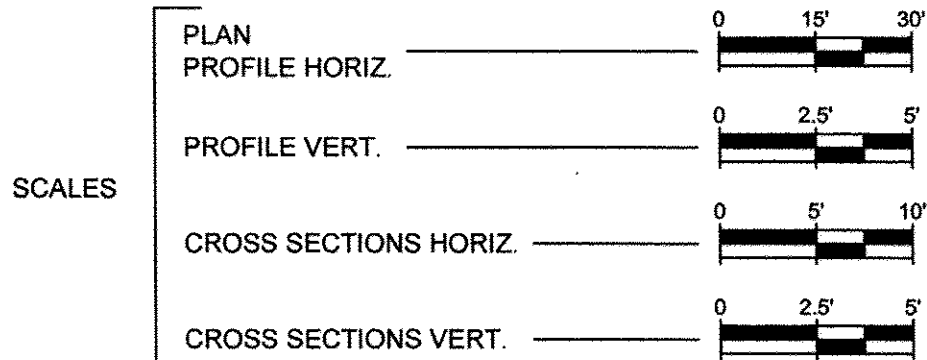
TELEPHONE
FRONTIER
MS. MICHELLE CUSTER
104 W. MULBERRY ST.
NORMAL, IL 61761
(309) 454-5204

CABLE/TV
MEDIACOM
MR. MATT FORGAS
808 E. NORTH ST.
ELBURN, IL 60119
(815) 597-5103



SECTION 15-00326-00-WR
COUNTY HIGHWAY 29
IMPROVEMENT ENDS
STA. 168+82

SECTION 15-00326-00-WR
COUNTY HIGHWAY 29
IMPROVEMENT BEGINS
STA. 9+00



J.U.L.I.E.
JOINT UTILITY LOCATION INFORMATION FOR EXCAVATION
1-800-892-0123

DISTRICT 3 NO. (815) 434-6131
CONTRACT NO. 87566

GROSS LENGTH = NET LENGTH = 15,982 FT. = 3.0269 MI.



EXPIRES 11/30/15

STATE OF ILLINOIS
DEPARTMENT OF TRANSPORTATION
DIVISION OF HIGHWAYS

SUBMITTED Jan. 29 2014
Lawrence J. Kinzer
COUNTY ENGINEER

PASSED 2/10 2014
David R. E.
DISTRICT 3 LOCAL ROADS AND STREETS ENGINEER

RELEASING FOR
BID BASED ON
LIMITED REVIEW 2/10 2014
Paul A. Lester
DEPUTY DIRECTOR OF HIGHWAYS, REGION 2 ENGINEER

PRINTED BY THE AUTHORITY
OF THE STATE OF ILLINOIS