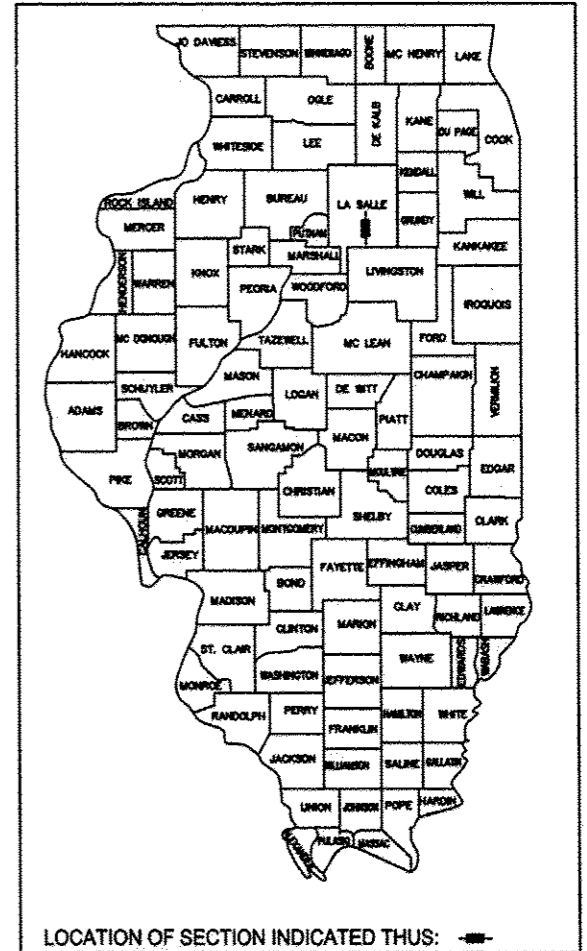


INDEX OF SHEETS

- 1 COVER SHEET
- 2 LIST OF STANDARDS, GENERAL NOTES AND LEGEND
- 3 SUMMARY OF QUANTITIES
- 4-7 SCHEDULES
- 8 TYPICAL SECTIONS
- 9-10 INTERSECTION DETAIL SHEETS
- 11 PLAN DETAIL SHEETS
- 12 PLAN AND PROFILE
- 13-15 DETAILS
- 16 CROSS SECTIONS

STATE OF ILLINOIS
DEPARTMENT OF TRANSPORTATION
DIVISION OF HIGHWAYS

**PLANS FOR PROPOSED
TARP PROJECT**
FAS 276 COUNTY HIGHWAY 29
SECTION 15-00326-00-WR
PROJECT RS-0263(104)
LASALLE COUNTY
C-93-079-13



LOCATION OF SECTION INDICATED THUS:

TRAFFIC DATA
2012 ADT = 650

DESIGN DESIGNATION
MAJOR COLLECTOR
DESIGN POLICY: 3R GUIDELINES
DESIGN SPEED: 55 MPH

ELECTRIC

COMED
MS. NORA FERNANDEZ
123 ENERGY AVE.
ROCKFORD, IL 61109
(815) 490-2869

GAS

AGL RESOURCES
(FORMERLY NICOR)
MS. CONSTANCE LANE
1844 FERRY RD.
NAPERVILLE, IL 60563
(630) 388-3830

WATER

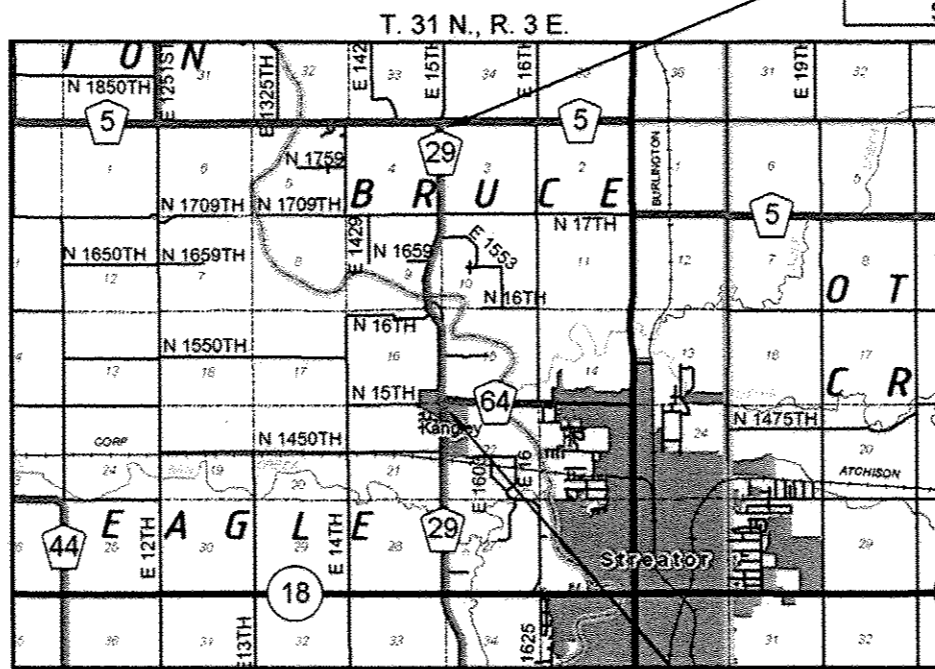
ILLINOIS AMERICAN
WATER COMPANY
MR. DAVID CLIFTON
120 S. STERLING ST.
STREATOR, IL 61364
(815) 672-4557

TELEPHONE

FRONTIER
MS. MICHELLE CUSTER
104 W. MULBERRY ST.
NORMAL, IL 61761
(309) 454-5204

CABLE/TV

MEDIACOM
MR. MATT FORGAS
808 E. NORTH ST.
ELBURN, IL 60119
(815) 597-5103



SECTION 15-00326-00-WR
COUNTY HIGHWAY 29
IMPROVEMENT BEGINS
STA. 9+00

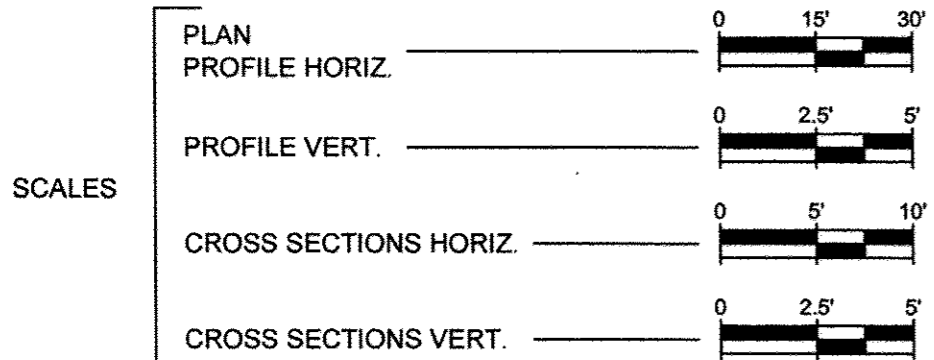


STATE OF ILLINOIS
DEPARTMENT OF TRANSPORTATION
DIVISION OF HIGHWAYS

SUBMITTED Jan. 29 2014
Lawrence J. Kinzer
COUNTY ENGINEER

PASSED 2/10 2014
David R. E.
DISTRICT 3 LOCAL ROADS AND STREETS ENGINEER

RELEASING FOR
BID BASED ON
LIMITED REVIEW 2/10 2014
Paul A. Lester
DEPUTY DIRECTOR OF HIGHWAYS, REGION 2 ENGINEER



J.U.L.I.E.
JOINT UTILITY LOCATION INFORMATION FOR EXCAVATION
1-800-892-0123

DISTRICT 3 NO. (815) 434-6131
CONTRACT NO. 87566

GROSS LENGTH = NET LENGTH = 15,982 FT. = 3.0269 MI.

PRINTED BY THE AUTHORITY
OF THE STATE OF ILLINOIS

COUNTY	SECTION	HWY.NO.	SHEET NO.
LASALLE	15-00326-00-WR	29	2 of 16

Contract # 87566

HIGHWAY STANDARDS

- 280001-07 TEMPORARY EROSION CONTROL SYSTEMS
- 482001-02 HMA SHOULDER ADJACENT TO FLEXIBLE PAVEMENT
- 542001-04 CONCRETE END SECTIONS FOR PIPE CULVERTS 15" THRU 84" DIA.
- 630001-10 STEEL PLATE BEAM GUARDRAIL
- 630301-06 SHOULDER WIDENING FOR TYPE 1 (SPECIAL) GUARDRAIL TERMINALS
- 635006-03 REFLECTOR AND TERMINAL MARKER PLACEMENT
- 701001-02 OFF ROAD OPERATIONS, 2L, 2W, MORE THAN 15' AWAY
- 701006-05 OFF ROAD OPERATIONS, 2L, 2W, 15" TO 24" FROM EDGE OF PAVEMENT
- 701011-04 OFF ROAD MOVING OPERATIONS, 2L, 2W DAY ONLY
- 701201-04 LANE CLOSURE, 2L, 2W, DAY ONLY, FOR SPEEDS ≥ 45 MPH
- 701301-04 LANE CLOSURE, 2L, 2W, SHORT TIME OPERATIONS
- 701306-03 LANE CLOSURE, 2L, 2W, SLOW MOVING OPERATIONS DAY ONLY, FOR SPEEDS ≥ 45 MPH
- 701311-03 LANE CLOSURE, 2L, 2W, MOVING OPERATIONS - DAY ONLY
- 701901-03 TRAFFIC CONTROL DEVICES
- B.L.R. 22-7 TRAFFIC CONTROL DEVICES ON RURAL LOCAL HIGHWAYS
- B.L.R. 24-2 MAILBOX TURNOUT FOR LOCAL ROADS
- 542311-05 TRAVERSABLE PIPE GRATE

GENERAL NOTES

THE THICKNESS OF BITUMINOUS MIXTURES SHOWN ON THE PLANS IS THE NOMINAL THICKNESS. DEVIATIONS FROM THE NOMINAL THICKNESS WILL BE PERMITTED WHEN SUCH DEVIATIONS OCCUR DUE TO IRREGULARITIES IN THE EXISTING SURFACE OR BASE ON WHICH THE BITUMINOUS MIXTURE IS PLACED.

THE BITUMINOUS SURFACE OF ALL MAILBOX TURNOUTS, PRIVATE ENTRANCES, COMMERCIAL ENTRANCES, AND SIDE ROADS SHALL BE MADE NEATLY, IN A WORKMANLIKE MANNER, AND SHALL ACCURATELY CONFORM TO THE SHAPES AND DIMENSIONS SHOWN ON THE PLAN DETAILS. THIS WORK SHALL BE INCLUDED IN THE COST OF THE BITUMINOUS SURFACE.

ANY REFERENCE TO A STANDARD IN THESE PLANS SHALL BE INTERPRETED TO MEAN THE EDITION AS INDICATED BY THE SUBNUMBER LISTED ON THE INDEX OF SHEETS OR THE COPY OF THE STANDARD INCLUDED IN THESE PLANS.

MIXTURE REQUIREMENTS			
SECTION 15-00326-00-WR			
MIXTURE USE	HMA BASE CSE. WIDENING	HMA BINDER CSE.	HMA SURFACE CSE.
PG:	PG 64-22	PG 64-22	PG 64-22
DESIGN AIR VOIDS:	4% @ N50	4% @ N50	4% @ N50
MIXTURE COMPOSITION:	IL-19.0	IL-19.0	IL-9.5
FRICTION AGGREGATE:			MIXTURE C
DENSITY REQUIREMENTS:	SEE SPECIAL PROVISIONS	SEE SPECIAL PROVISIONS	SEE SPECIAL PROVISIONS

THE FOLLOWING RATES OF APPLICATION HAVE BEEN USED IN CALCULATING PLAN QUANTITIES.	
GRANULAR MATERIALS	2.05 TONS/CU YD
BITUMINOUS MATERIALS (PRIME COAT)	0.02 TO 0.10 GAL/SQ YD
HOT MIX ASPHALT BINDER AND SURFACE COURSE	112 LBS/SQ YD/INCH
SHORT-TERM PAVEMENT MARKING	4 FT/40 FT EACH APPLICATION

LEGEND

EXISTING CABLE T.V.	-----CTV-----
EXISTING CENTERLINE	-----
EXISTING MAJOR CONTOUR	-----
EXISTING MINOR CONTOUR	-----
EXISTING EASEMENT	-----
EXISTING ELECTRIC	---E---E---
EXISTING FENCE	---X---X---
EXISTING FIBER OPTIC	---FO---FO---
EXISTING GAS	---G---G---
EXISTING GUARDRAIL	-----
EXISTING RAILROAD	+++++
EXISTING SANITARY	---)---)---
EXISTING STORM SEWER	--->---
EXISTING TELEPHONE	---T---T---
EXISTING MAILBOX	
EXISTING SIGN	
EXISTING R.O.W. MARKER	
EXISTING PK NAIL	
EXISTING POWER POLE	
EXISTING GUY WIRE	
EXISTING POWER POLE W/ LIGHT	
EXISTING POWER POLE W/ TRANSFORMER	
EXISTING TELEPHONE POLE	
EXISTING TELEPHONE RISER	
EXISTING DECIDUOUS TREE	
EXISTING EVERGREEN TREE	
EXISTING BUSH	
EXISTING MANHOLE	
EXISTING INLET	
EXISTING CATCH BASIN	
EXISTING FLARED END SECTION	
EXISTING FIRE HYDRANT	
EXISTING WATER VALVE	
EXISTING WATER SHUT OFF	
EXISTING WATER METER	
EXISTING WELL	
EXISTING TRAFFIC SIGNAL	
EXISTING GAS METER	
EXISTING VALVE	

HIGHWAY STANDARDS AND GENERAL NOTES

COUNTY	SECTION	HWY.NO.	SHEET NO.
LASALLE	15-00326-00-WR	29	3 of 16

Contract # 89566

SUMMARY OF QUANTITIES - CONSTRUCTION TYPE CODE - 0004

S.P.	ITEM #	ITEM	UNIT	QUANTITY	S.P.	ITEM #	ITEM	UNIT	QUANTITY
*	20200500	EARTH EXCAVATION (WIDENING)	CU YD	1,921	*	70300100	SHORT TERM PAVEMENT MARKING	FOOT	3137
*	20400800	FURNISHED EXCAVATION	CU YD	3,518	†	78001110	PAINT PAVEMENT MARKING - LINE 4"	FOOT	50,980
	20800150	TRENCH BACKFILL	CU YD	80.4	†	78200200	BIDIRECTIONAL PRISMATIC BARRIER REFLECTOR	EACH	79
	21400100	GRADING AND SHAPING DITCHES	FOOT	200	†	78201000	TERMINAL MARKER - DIRECT APPLIED	EACH	19
	25000200	SEEDING, CLASS 2	ACRE	1.5	†	LR400005	CIR-FDR EMULSIFIED ASPHALT	GAL	67,000
	25000400	NITROGEN FERTILIZER NUTRIENT	POUND	135	†	LR400015	ADD ROCK	SQ YD	41,832
	25000500	PHOSPHORUS FERTILIZER NUTRIENT	POUND	135	* †	LR400760	COLD IN-PLACE RECYCLING, 6.0"	SQ YD	41,832
	25000600	POTASSIUM FERTILIZER NUTRIENT	POUND	135		Z0013798	CONSTRUCTION LAYOUT	L SUM	1
*	25100115	MULCH, METHOD 2	ACRE	1.5		X4060105	BITUMINOUS MATERIALS (PRIME COAT), SPECIAL	GAL	95
	28000305	TEMPORARY DITCH CHECKS	FOOT	1,408	†	X6310187	TRAFFIC BARRIER TERMINAL, TYPE 6 (MODIFIED)	EACH	4
	28000400	PERIMETER EROSION BARRIER	FOOT	320	†	X6330725	STEEL PLATE BEAM GUARDRAIL (SHORT RADIUS)	FOOT	68
	28000500	INLET AND PIPE PROTECTION	EACH	16		X7010216	TRAFFIC CONTROL AND PROTECTION, (SPECIAL)	L SUM	1
	28100207	STONE RIPRAP, CLASS A4	TON	6	*	54260311	TRAVERSABLE PIPE GRATE	Foot	11
	35101400	AGGREGATE BASE COURSE, TYPE B	TON	702					
*	35600670	HOT-MIX ASPHALT BASE COURSE WIDENING, 5"	SQ YD	27					
*	35600710	HOT-MIX ASPHALT BASE COURSE WIDENING, 8 1/2"	SQ YD	615					
*	40300100	BITUMINOUS MATERIALS (PRIME COAT)	GAL	4,242					
	40600300	AGGREGATE (PRIME COAT)	TON	85					
*	40600982	HOT-MIX ASPHALT SURFACE REMOVAL - BUTT JOINT	SQ YD	523					
*	40603080	HOT-MIX ASPHALT BINDER COURSE, IL-19.0, N50	TON	8,743					
*	40603310	HOT-MIX ASPHALT SURFACE COURSE, MIX "C", N50	TON	2,790					
	40800050	INCIDENTAL HOT-MIX ASPHALT SURFACING	TON	432					
	44000100	PAVEMENT REMOVAL	SQ YD	31					
	44201711	CLASS D PATCHES, TYPE IV, 5 INCH	SQ YD	59					
*	48101200	AGGREGATE SHOULDERS, TYPE B	TON	2,611					
	50104400	CONCRETE HEADWALL REMOVAL	EACH	2					
*	50105220	PIPE CULVERT REMOVAL	FOOT	208					
*	542A1075	PIPE CULVERTS, CLASS A, TYPE 2 30"	FOOT	85					
*	542D1060	PIPE CULVERTS, CLASS D, TYPE 2 15"	FOOT	50					
*	542D5479	PIPE CULVERTS, CLASS D, TYPE 1 EQUIVALENT ROUND-SIZE 24"	FOOT	43					
*	54261230	CONCRETE END SECTION, STANDARD 542001, 30", 1:2	EACH	2					
†	63000001	STEEL PLATE BEAM GUARDRAIL, TYPE A, 6 FOOT POSTS	FOOT	2,712.5					
†	63100045	TRAFFIC BARRIER TERMINAL, TYPE 2	EACH	2					
†	63100167	TRAFFIC BARRIER TERMINAL, TYPE 1 (SPECIAL) TANGENT	EACH	19					
*	63200310	GUARDRAIL REMOVAL	FOOT	3,599					
	67100100	MOBILIZATION	L. SUM	1					

* - SEE SPECIAL PROVISIONS

† - SPECIALTY ITEM

SUMMARY OF QUANTITIES

COUNTY	SECTION	HWY.NO.	SHEET NO.
LASALLE	15-00326-00-WR	29	4 of 16

Contract # 87566

CURVE TABLE									
CURVE #	PI STATION	Δ	D	RADIUS	TANGENT	LENGTH	E	PC STATION	PT STATION
C1	51+23.33	36.51	4.046	1416.200	467.163	902.491	75.063	46+56.17	55+58.66
C2	62+59.00	32.49	4.000	1432.390	417.400	812.307	59.577	58+41.59	66+53.90
C3	80+61.80	20.78	2.204	2600.000	476.707	942.940	43.341	75+85.10	85+28.04
C4	89+29.08	4.95	1.432	4000.000	172.873	345.530	3.734	87+56.20	91+01.73
C5	97+04.38	10.17	2.546	2250.000	200.196	399.341	8.889	95+04.18	99+03.52
C6	106+95.14	21.68	5.380	1065.000	203.922	402.966	19.347	104+91.21	108+94.18

SUPERELEVATION SCHEDULE									
CURVE #	STATION	DESCRIPTION	LEFT	RIGHT	CURVE #	STATION	DESCRIPTION	LEFT	RIGHT
C1	45+07.60	END NORMAL CROWN	-2.0%	-2.0%	C4	86+52.57	END NORMAL CROWN	-2.0%	-2.0%
	45+58.83	LEVEL CROWN	-2.0%	0.0%		87+03.53	LEVEL CROWN	-2.0%	0.0%
	46+10.06	REVERSE CROWN	-2.0%	+2.0%		87+54.50	REVERSE CROWN	-2.0%	+2.0%
	47+04.83	BEGIN FULL SUPER	-4.0%	+4.0%		87+82.53	BEGIN FULL SUPER	-3.1%	+3.1%
	55+10.00	END FULL SUPER	-4.0%	+4.0%		90+75.40	END FULL SUPER	-3.1%	+3.1%
	56+02.77	REVERSE CROWN	-2.0%	+2.0%		91+03.43	REVERSE CROWN	-2.0%	+2.0%
	56+52.00	LEVEL CROWN	-2.0%	0.0%		91+54.40	LEVEL CROWN	-2.0%	0.0%
	57+00.00	BEGIN NORMAL CROWN	-2.0%	-2.0%		92+05.37	BEGIN NORMAL CROWN	-2.0%	-2.0%
C2	57+00.00	END NORMAL CROWN	-2.0%	-2.0%	C5	93+69.83	END NORMAL CROWN	-2.0%	-2.0%
	57+48.26	LEVEL CROWN	0.0%	-2.0%		94+20.85	LEVEL CROWN	0.0%	-2.0%
	57+97.48	REVERSE CROWN	+2.0%	-2.0%		94+71.87	REVERSE CROWN	+2.0%	-2.0%
	58+90.26	BEGIN FULL SUPER	+5.7%	-5.7%		95+45.85	BEGIN FULL SUPER	+4.9%	-4.9%
	66+05.24	END FULL SUPER	+5.7%	-5.7%		98+61.86	END FULL SUPER	+4.9%	-4.9%
	67+00.01	REVERSE CROWN	+2.0%	-2.0%		99+35.84	REVERSE CROWN	+2.0%	-2.0%
	67+51.24	LEVEL CROWN	0.0%	-2.0%		99+86.86	LEVEL CROWN	0.0%	-2.0%
	68+02.47	BEGIN NORMAL CROWN	-2.0%	-2.0%		100+37.88	BEGIN NORMAL CROWN	-2.0%	-2.0%
C3	57+00.00	END NORMAL CROWN	-2.0%	-2.0%	C6	103+40.21	END NORMAL CROWN	-2.0%	-2.0%
	57+48.26	LEVEL CROWN	0.0%	-2.0%		103+90.54	LEVEL CROWN	-2.0%	0.0%
	57+97.48	REVERSE CROWN	+2.0%	-2.0%		104+40.88	REVERSE CROWN	-2.0%	+2.0%
	58+90.26	BEGIN FULL SUPER	+4.3%	-4.3%		105+41.54	BEGIN FULL SUPER	-6.0%	+6.0%
	66+05.24	END FULL SUPER	+4.3%	-4.3%		108+43.85	END FULL SUPER	-6.0%	+6.0%
	67+00.01	REVERSE CROWN	+2.0%	-2.0%		109+44.52	REVERSE CROWN	-2.0%	+2.0%
	67+51.24	LEVEL CROWN	0.0%	-2.0%		109+94.85	LEVEL CROWN	-2.0%	0.0%
	68+02.47	BEGIN NORMAL CROWN	-2.0%	-2.0%		110+45.19	BEGIN NORMAL CROWN	-2.0%	-2.0%

COUNTY	SECTION	HWY.NO.	SHEET NO.
LASALLE	15-00326-00-WR	29	5 of 16

Contract #
87566

PAVEMENT SCHEDULE												
STA TO STA	SURFACE WIDTH	LENGTH	OMISSION	AREA	BIT. MAT. (PR. CT.) SS-1	AGGREGATE PRIME COAT	HMA BINDER COURSE, IL-19.0, N50	HMA SURFACE COURSE, MIX "C", N50	INCIDENTAL HMA SURFACING	AGGREGATE SHOULDERS, TY. B	BIT. MAT. (PR. CT.), SPECIAL	SHORT-TERM PAV'T MARKING
	FEET	FEET	BRIDGE SQ. YD.	SQ. YD.	GAL	TON	TON	TON	TON	TON	GAL	FOOT
9+00 TO 168+82	22	15,982	295	38,346	3,834.6	76.7	8,447	2,684	-	2,486	-	3,137.4
PRIVATE ENTRANCES				368.8	36.9	0.7	-	-	98.1	-	-	-
FIELD ENTRANCES				168.3	16.8	0.3	33.0	11.8	-	125*	-	-
INTERSECTIONS				2,204.4	220.3	4.4	-	-	586.4	-	94.6	-
MAILBOX TURNOUTS				69.2	6.9	0.1	13.6	4.8	-	-	-	-
PAVED SHOULDER				1,268.6	126.9	2.5	249	89	-	-	-	-
TOTALS				43,692.7	4,242.4	84.7	8,742.6	2,789.6	432.2	2,611	94.6	3,137.4

* AGGREGATE SHOULDERS, TY B ARE ESTIMATED AT 5 TON PER FIELD ENTRANCE

HOT MIX ASPHALT BASE COURSE WIDENING			
LOCATION		HOT MIX ASPHALT BASE COURSE WIDENING, 5"	HOT MIX ASPHALT BASE COURSE WIDENING, 8.5"
STATION	SIDE	SQ YD	SQ YD
9+02-9+87	RT	-	143.0
10+14-11+43	RT	-	145.9
46+56-55+59	LT	-	-
58+42-66+54	RT	-	-
75+85-85+28	RT	-	-
87+56-91+02	LT	-	-
95+04-99+04	RT	-	-
104+91-108+94	LT	26.7	-
167+77-168+81	LT	-	145.6
168+23-168+85	RT	-	180.9
TOTAL		26.7	615.4

INTERSECTIONS			
STATION	SIDE	LOCATION	SQ YD
10+00	RT	C.H. 64	738.6
34+72	RT	N. 1559TH	63.6
50+54	RT	E. 1509TH	139.4
60+75	LT	N. 16TH	159.2
89+49	LT	N. 1659TH	123.0
104+02	RT	E. 1553RD	131.6
117+36	LT	N. 17TH	177.7
117+36	RT	N. 17TH	234.7
168+50	LT	C.H. 5	218.2
168+50	RT	C.H. 5	218.4
TOTAL			2,204.4

FIELD ENTRANCES		
STATION	SIDE	SQ YD
21+41	RT	6.3
27+79	RT	6.3
34+82	LT	11.7
37+73	RT	6.3
48+07	LT	6.3
48+95	RT	6.3
50+46	LT	6.3
76+54	RT	6.3
76+63	LT	11.7
83+68	RT	6.3
88+92	RT	6.3
96+00	RT	6.3
96+07	LT	6.3
99+30	RT	6.3
106+91	LT	6.3
108+11	LT	6.3
116+85	LT	6.3
118+70	RT	6.3
131+03	LT	6.3
131+03	RT	6.3
141+16	RT	6.3
143+89	RT	6.3
144+14	LT	6.3
166+39	RT	6.3
167+20	LT	6.3
TOTAL		168.3

MAIL BOX TURNOUT		
STATION	SIDE	SQ YD
15+84	RT	17.3
39+50	RT	17.3
98+21	RT	17.3
140+00	RT	17.3
TOTAL		69.2

PAVED SHOULDER		
STATION	SIDE	SQ YD
46+56-55+59	LT	301.0
58+42-66+54	RT	270.7
75+85-85+28	RT	314.3
87+56-91+02	LT	115.3
95+04-99+04	RT	133.0
104+91-108+94	LT	134.3
TOTAL		1,268.6

PRIVATE ENTRANCES		
STATION	SIDE	SQ YD
15+84	RT	83.5
20+59	LT	19.5
39+50	RT	43.7
63+18	LT	114.1
98+21	RT	56.9
140+00	RT	51.1
TOTAL		368.8

HMA SURFACE REMOVAL - BUTT JOINT		
STATION	SIDE	SQ YD
9+00-9+30	CL	80
10+00	RT	83.3
63+18	LT	13.3
67+90-68+40	CL	133.3
71+34-71+84	CL	133.3
168+52-168+82	CL	80
TOTAL		523.2

SCHEDULES

COUNTY	SECTION	HWY.NO.	SHEET NO.
LASALLE	15-00326-00-WR	29	6 of 16

Contract # 87566

GUARDRAIL SCHEDULE							
LOCATION		GUARDRAIL REMOVAL	S.P.B.G.R., TYPE A, 6 FOOT POSTS	S.P.B.G.R. (SHORT RADIUS)	TRAFFIC BARRIER TERMINAL, TYPE 1 (SPECIAL) TANGENT	TRAFFIC BARRIER TERMINAL, TYPE 2	TRAFFIC BARRIER TERMINAL, TYPE 6 (MODIFIED)
STATION	SIDE	FOOT	FOOT	FOOT	EACH	EACH	EACH
15+43-17+72	LT	293.5	200.0	-	2	-	-
15+99-17+71	RT	193.4	112.5	10.0	1	1	-
59+60-60+43	LT	196.0	87.5	37.5	2	-	-
60+67-62+87	LT	286.4	212.5	-	2	-	-
60+88-68+37	RT	742.8	650.0	-	1	-	1
67+23-68+41	LT	113.0	25.0	-	1	-	1
71+32-76+35	RT	503.1	437.5	-	1	-	1
71+39-76+53	LT	527.2	450.0	20.5	1	1	1
89+62-91+24	RT	155.0	100.0	-	2	-	-
89+66-91+24	LT	187.7	137.5	-	2	-	-
100+60-102+62	LT	201.5	150.0	-	2	-	-
100+61-102+61	RT	199.8	150.0	-	2	-	-
TOTAL		3,599	2,712.5	68	19	2	4

PAINT PAVEMENT MARKING				
STATION	SIDE	WHITE EDGE LINE	YELLOW SKIP DASH	YELLOW SOLID LINE
		FOOT	FOOT	FOOT
9+00 TO 60+42	LT	5,142	-	-
9+00 TO 9+87	RT	159	-	-
9+00 TO 13+03	℄	-	151	-
10+12 TO 34+40	RT	2,493	-	-
13+03 TO 20+41	℄ - NORTH BOUND	-	-	738
13+03 TO 20+41	℄ - SOUTH BOUND	-	277	-
20+41 TO 24+00	℄	-	135	-
24+00 TO 31+37	℄ - NORTH BOUND	-	276	-
24+00 TO 31+37	℄ - SOUTH BOUND	-	-	737
31+37 TO 33+75	℄	-	89	-
33+75 TO 44+76	℄ - NORTH BOUND	-	-	1,101
33+75 TO 44+76	℄ - SOUTH BOUND	-	413	-
35+00 TO 49+88	RT	1,488	-	-
44+76 TO 106+65	℄ - NORTH BOUND	-	-	6,189
44+76 TO 106+65	℄ - SOUTH BOUND	-	-	6,189
50+87 TO 103+50	RT	5,263	-	-
61+26 TO 89+06	LT	2,780	-	-
89+90 TO 116+79	LT	2,689	-	-
104+37 TO 116+79	RT	1,242	-	-
106+65 TO 116+78	℄ - NORTH BOUND	-	380	-
106+65 TO 116+78	℄ - SOUTH BOUND	-	-	1,013
116+78 TO 168+95	℄	-	1,956	-
117+83 TO 168+23	LT	5,040	-	-
117+83 TO 168+23	RT	5,040	-	-
TOTALS		31,336	3,677	15,967

COUNTY	SECTION	HWY.NO.	SHEET NO.
LASALLE	15-00326-00-WR	29	7 of 16

Contract # 87566

TEMPORARY DITCH CHECK											
LOCATION			LENGTH	LOCATION			LENGTH	LOCATION			LENGTH
STATION	SIDE		FOOT	STATION	SIDE		FOOT	STATION	SIDE		FOOT
9+25		RT	11	66+54	LT		11	108+16	LT	RT	22
9+50		RT	11	66+96	LT		11	108+91	LT	RT	22
45+56	LT	RT	22	77+05		RT	11				
45+89	LT	RT	22	77+37	LT	RT	22				
46+28	LT	RT	22	77+69	LT	RT	22				
46+71	LT	RT	22	78+01	LT	RT	22				
47+12	LT	RT	22	78+28	LT	RT	22				
47+51	LT	RT	22	78+55	LT	RT	22				
47+90		RT	11	78+82	LT	RT	22				
48+26		RT	11	79+08	LT	RT	22				
48+62	LT		11	79+33	LT	RT	22				
48+97	LT		11	79+58	LT	RT	22				
49+38	LT	RT	22	79+82	LT	RT	22				
49+79	LT	RT	22	80+07	LT	RT	22				
50+22	LT		11	80+34	LT	RT	22				
51+17	LT	RT	22	80+60	LT	RT	22				
51+78		RT	11	80+86	LT	RT	22				
52+61	LT		11	81+13	LT	RT	22				
53+54	LT	RT	22	81+40	LT	RT	22				
54+33	LT	RT	22	81+68	LT	RT	22				
54+99	LT	RT	22	81+95	LT	RT	22				
55+45	LT	RT	22	82+34	LT	RT	22				
55+91	LT	RT	22	82+75	LT	RT	22				
57+91	LT	RT	22	83+15	LT	RT	22				
58+29	LT	RT	22	83+53	LT		11				
58+67	LT	RT	22	83+92	LT		11				
59+04	LT	RT	22	84+40	LT		11				
59+33	LT	RT	22	84+92	LT		11				
59+63	LT	RT	22	85+38	LT		11				
59+92	LT		11	85+84	LT		11				
60+19	LT		11	87+00	LT		11				
63+68	LT		11	87+95	LT		11				
63+97	LT		11	88+95	LT		11				
64+29	LT		11	94+96		RT	11				
64+60	LT		11	97+55	LT	RT	22				
64+92	LT		11	104+57	LT	RT	22				
65+22	LT		11	105+83	LT	RT	22				
65+51	LT		11	106+51		RT	11				
65+80	LT		11	107+09		RT	11				
66+12	LT		11	107+60		RT	11				
TOTAL											1,408

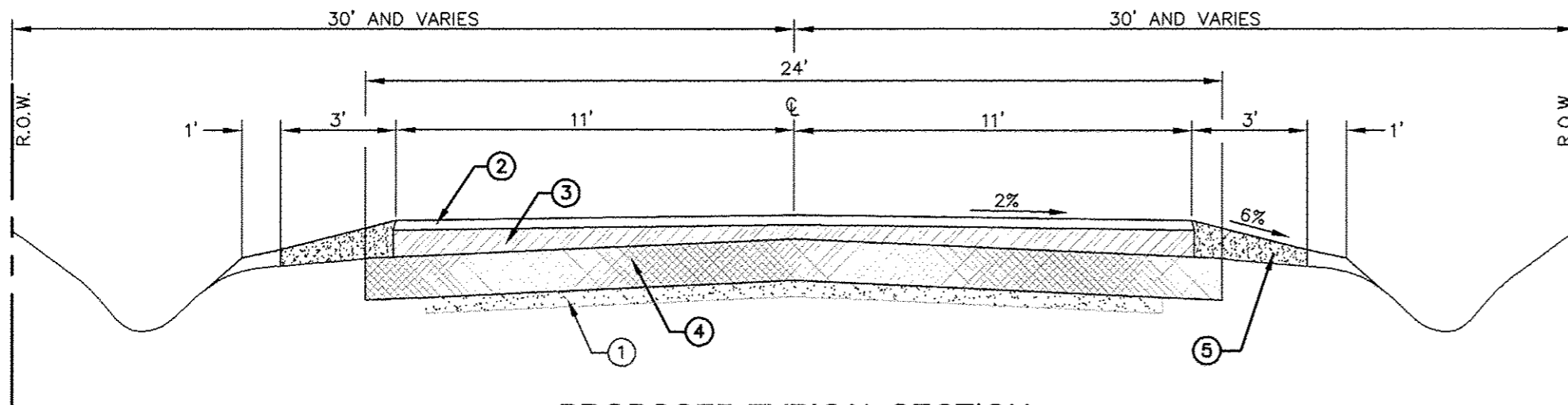
PERIMETER EROSION BARRIER *		
STATION	SIDE	LENGTH
51+75 TO 52+25	RT	50
52+50 TO 53+00	RT	50
90+40 TO 92+60	RT	220
TOTAL		320

* PERIMETER EROSION BARRIER IS SILT FENCE.

INLET AND PIPE PROTECTION		
STATION	SIDE	EACH
10+43	RT	1
15+68	RT	1
47+91	LT	1
48+81	RT	1
50+15	RT	1
50+33	LT	1
51+76	LT	1
76+68	RT	1
76+90	LT	1
83+88	RT	1
89+06	RT	1
96+15	RT	1
96+22	RT	1
99+10	LT	1
107+04	LT	1
108+22	LT	1
TOTAL		16

COUNTY	SECTION	HWY.NO.	SHEET NO.
LASALLE	15-00326-00-WR	29	8 of 16

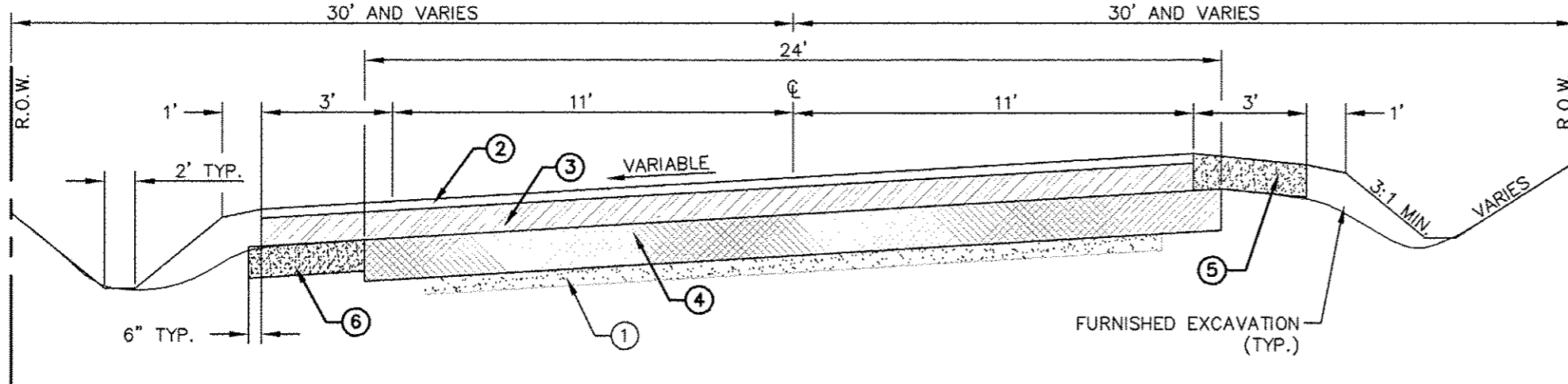
Contract # 87566



PROPOSED TYPICAL SECTION

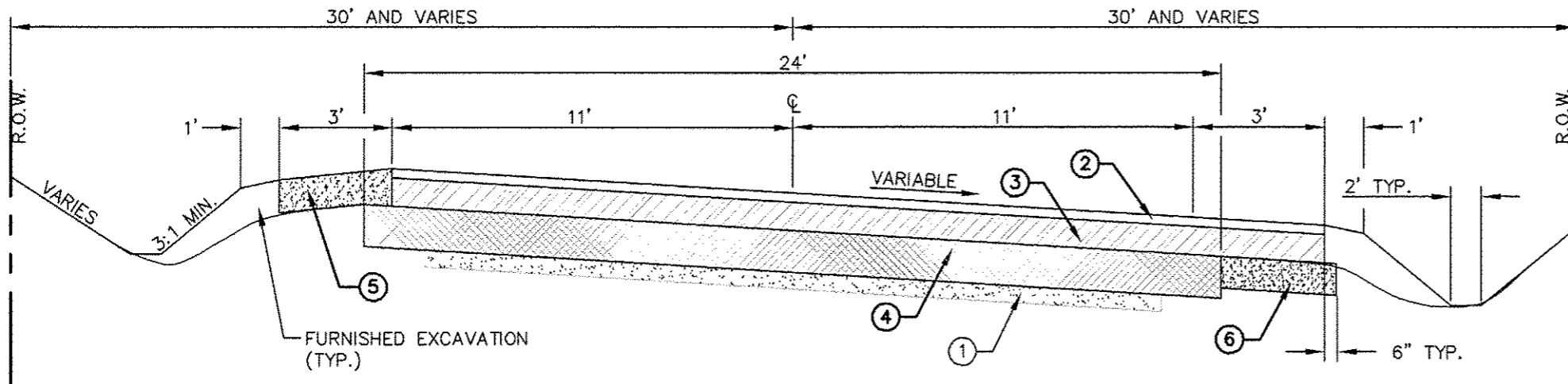
STA. 9+00.00 TO STA. 45+07.60
 STA. 68+02.47 TO STA. 74+60.60
 STA. 92+05.37 TO STA. 93+69.83
 STA. 100+37.88 TO STA. 103+40.21
 STA. 110+45.19 TO STA. 168+82.00

- EXISTING**
- ① EXISTING 4"-8" x 20' AGGREGATE BASE COURSE, TY-B
- PROPOSED**
- ② HOT MIX ASPHALT SURFACE COURSE, 1 1/4"
 - ③ HOT MIX ASPHALT BINDER COURSE, 3 1/2"
 - ④ 6"x20' RECYCLED EXISTING MATERIAL, 6"x2' ON EACH SIDE FOR WIDENING (6"x4')
 - ⑤ 4 3/4" x 3' AGGREGATE SHOULDERS, TY. B
 - ⑥ AGGREGATE BASE COURSE, TYPE B, 8"



PROPOSED TYPICAL SECTION

STA. 45+07.06 TO STA. 57+00.00
 STA. 86+52.57 TO STA. 92+05.37
 STA. 103+40.21 TO STA. 110+45.19



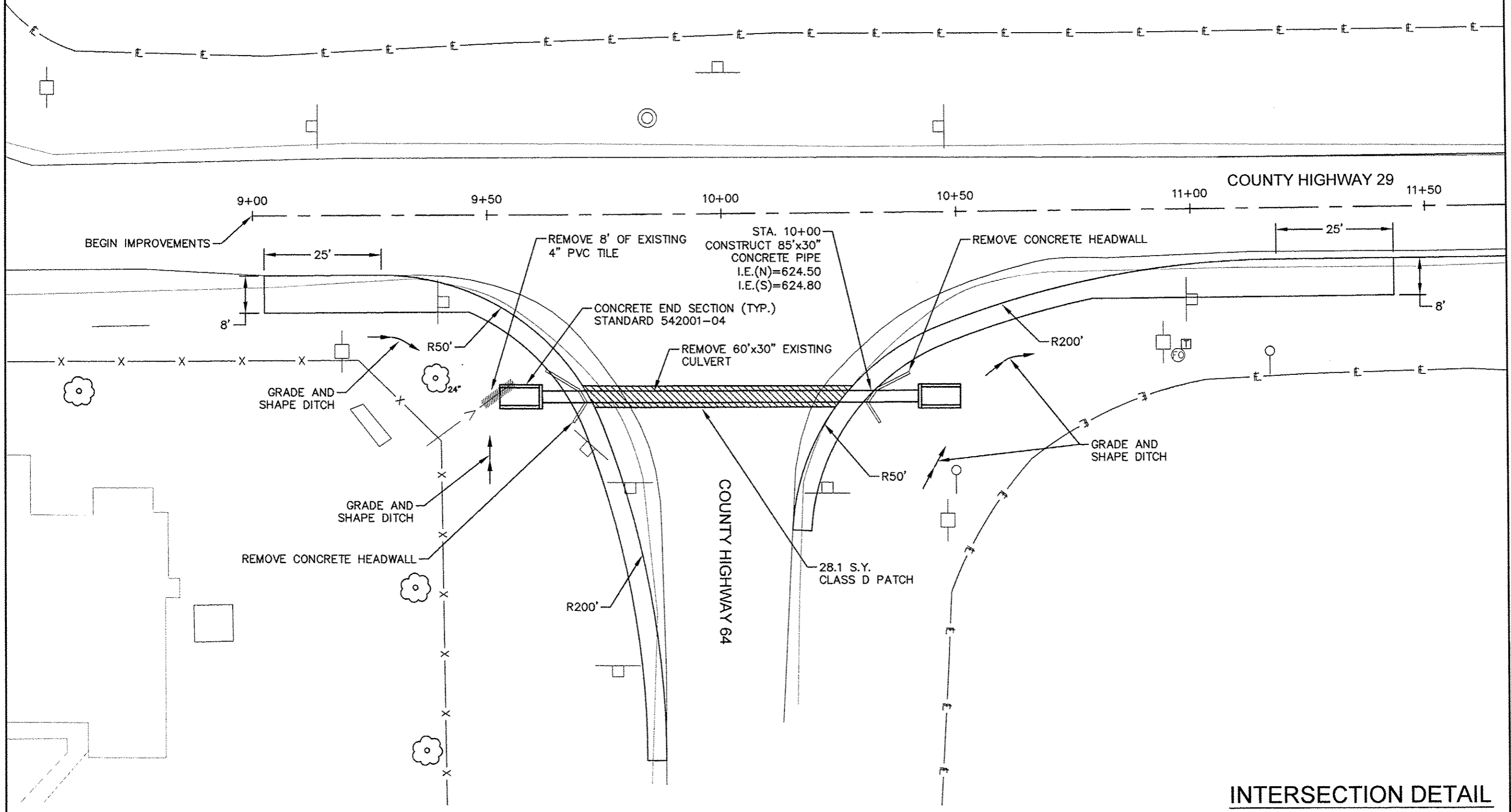
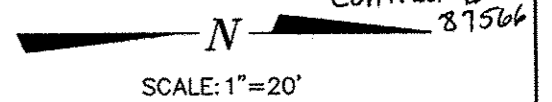
PROPOSED TYPICAL SECTION

STA. 57+00.00 TO STA. 68+02.47
 STA. 74+60.60 TO STA. 86+52.54
 STA. 93+69.83 TO STA. 100+37.88

TYPICAL SECTIONS

COUNTY	SECTION	HWY.NO.	SHEET NO.
LASALLE	15-00326-00-WR	29	9 of 16

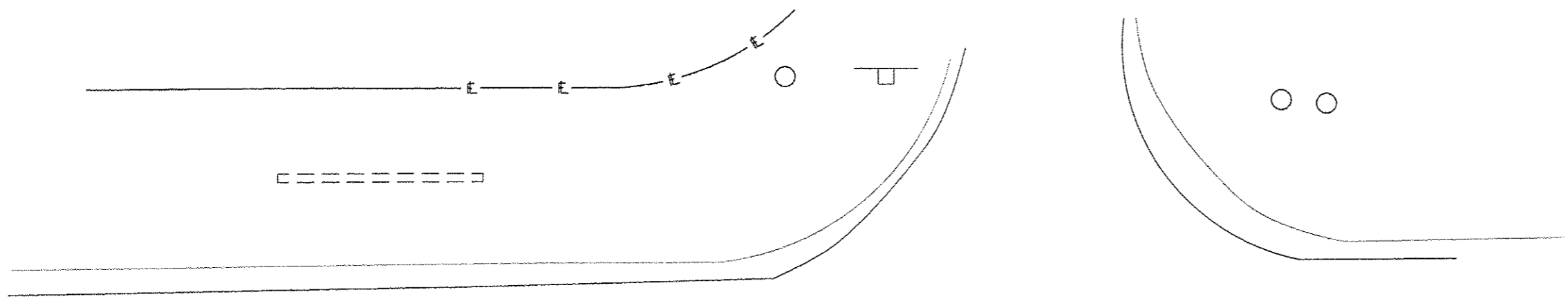
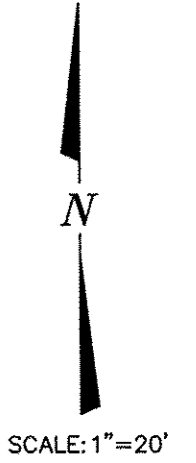
Contract # 81566



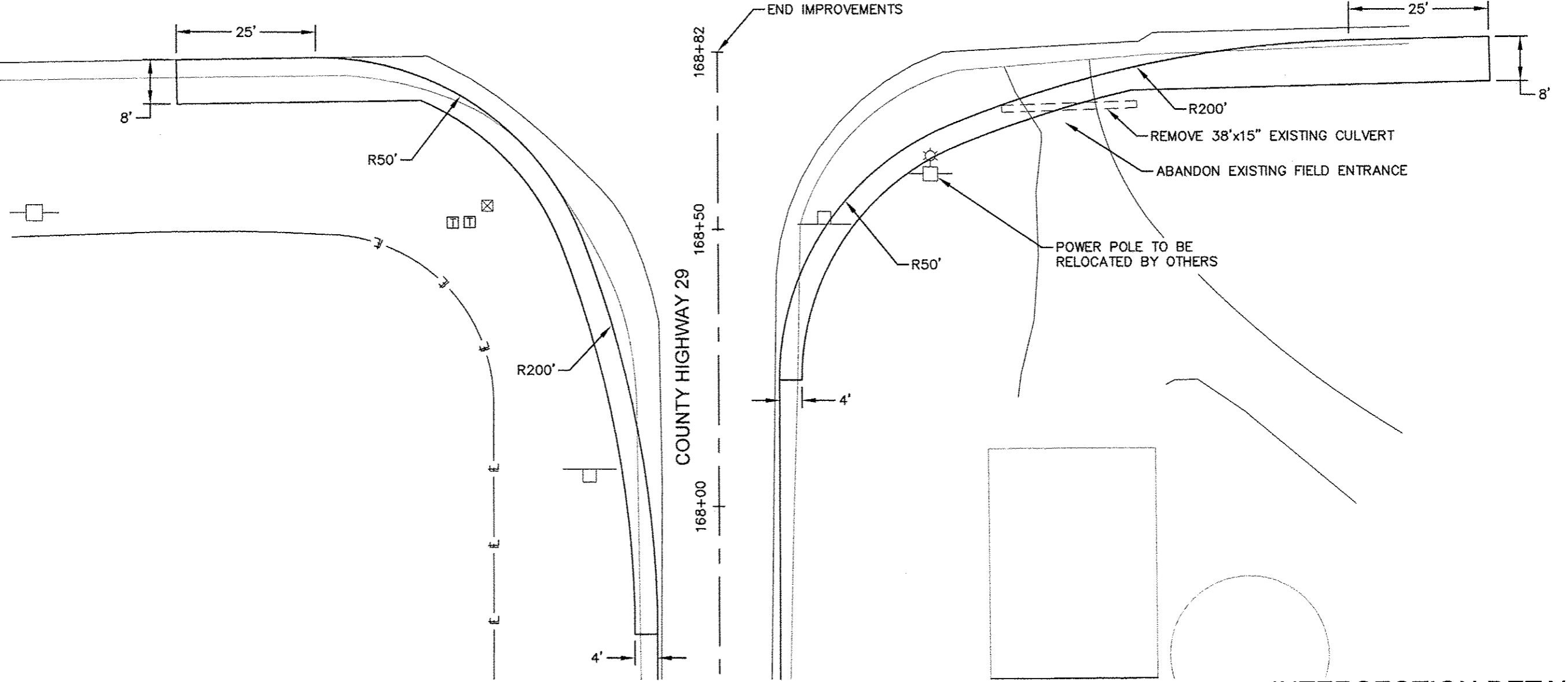
INTERSECTION DETAIL

COUNTY	SECTION	HWY.NO.	SHEET NO.
LASALLE	15-00326-00-WR	29	10 of 16

Contract # 87566



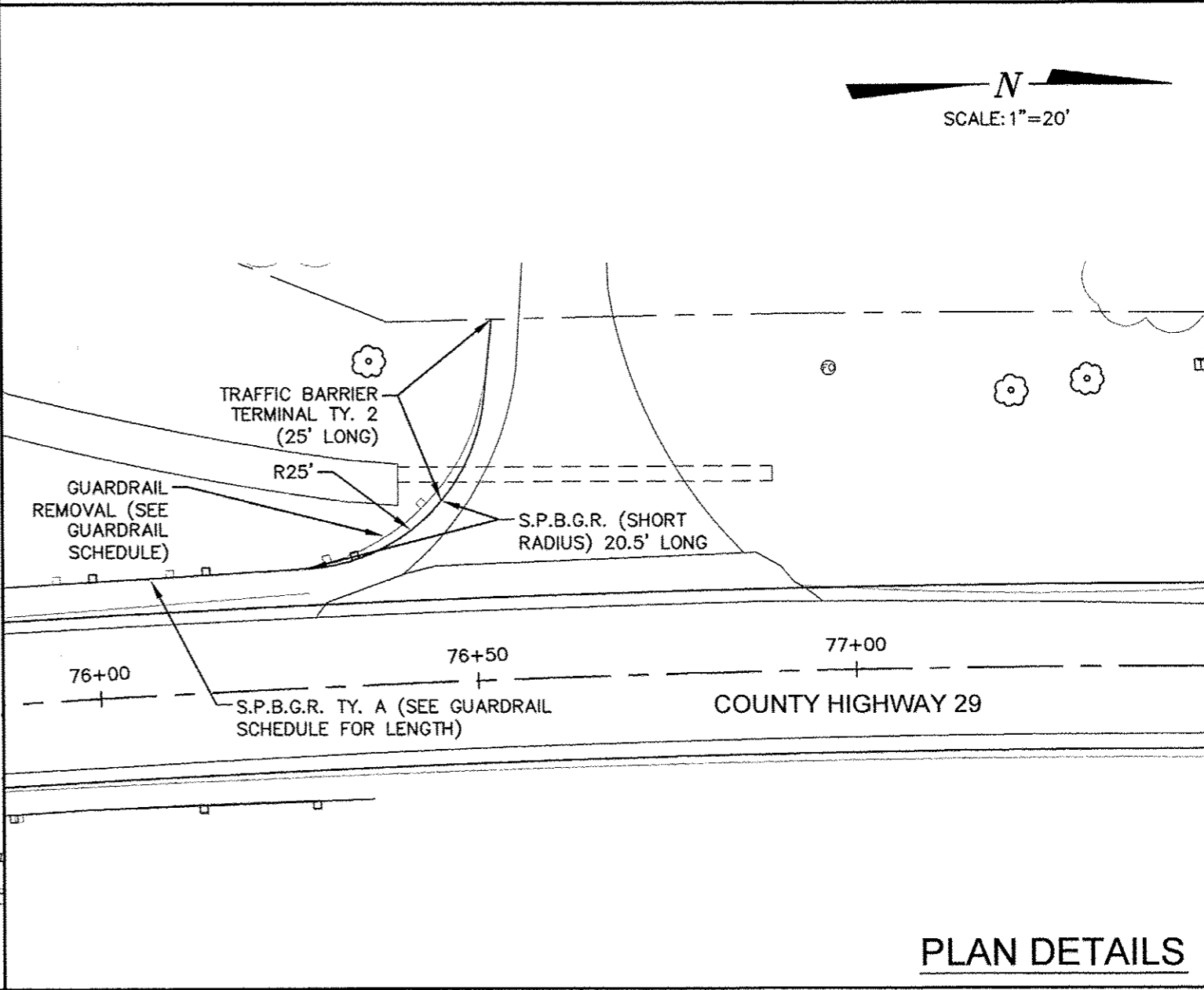
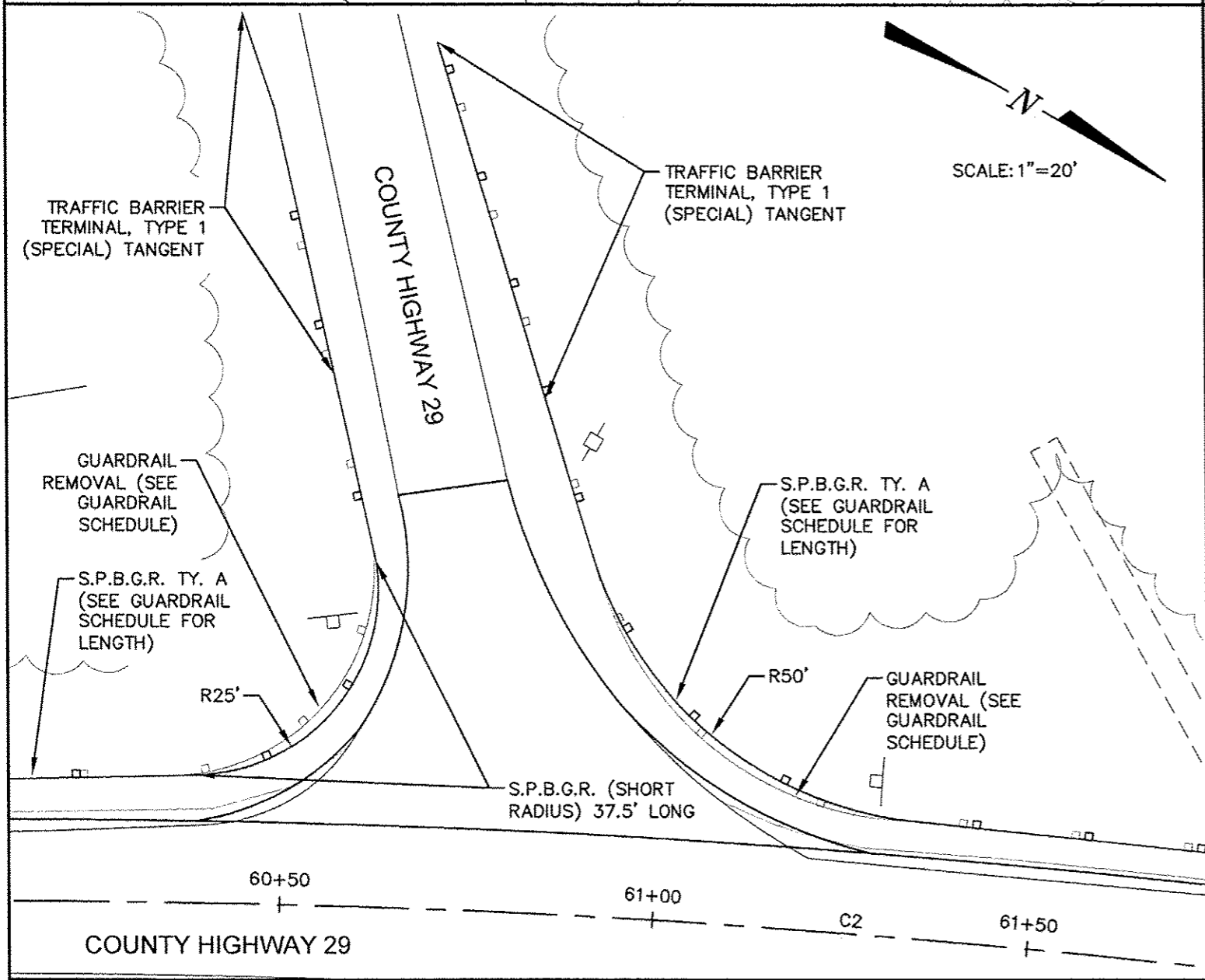
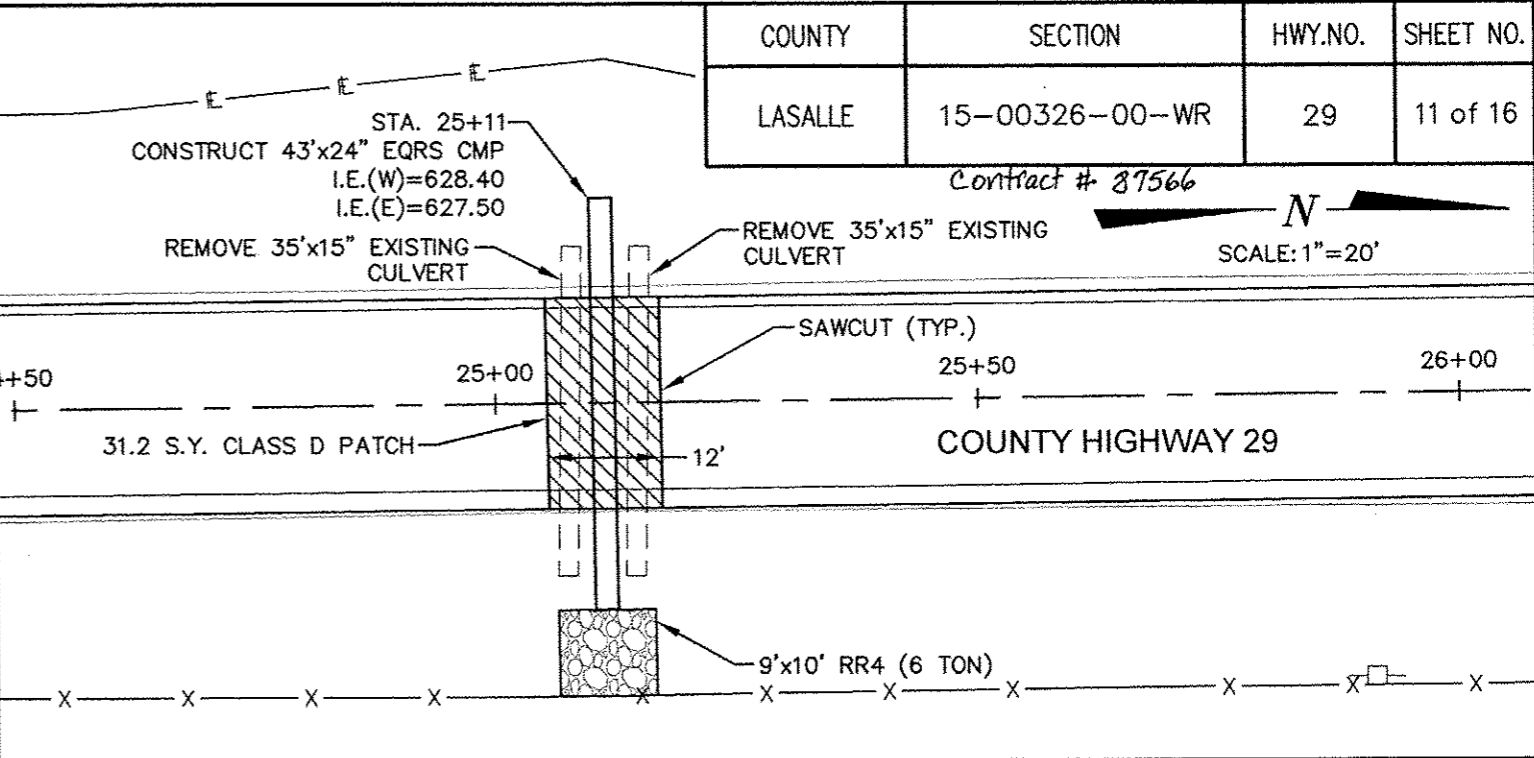
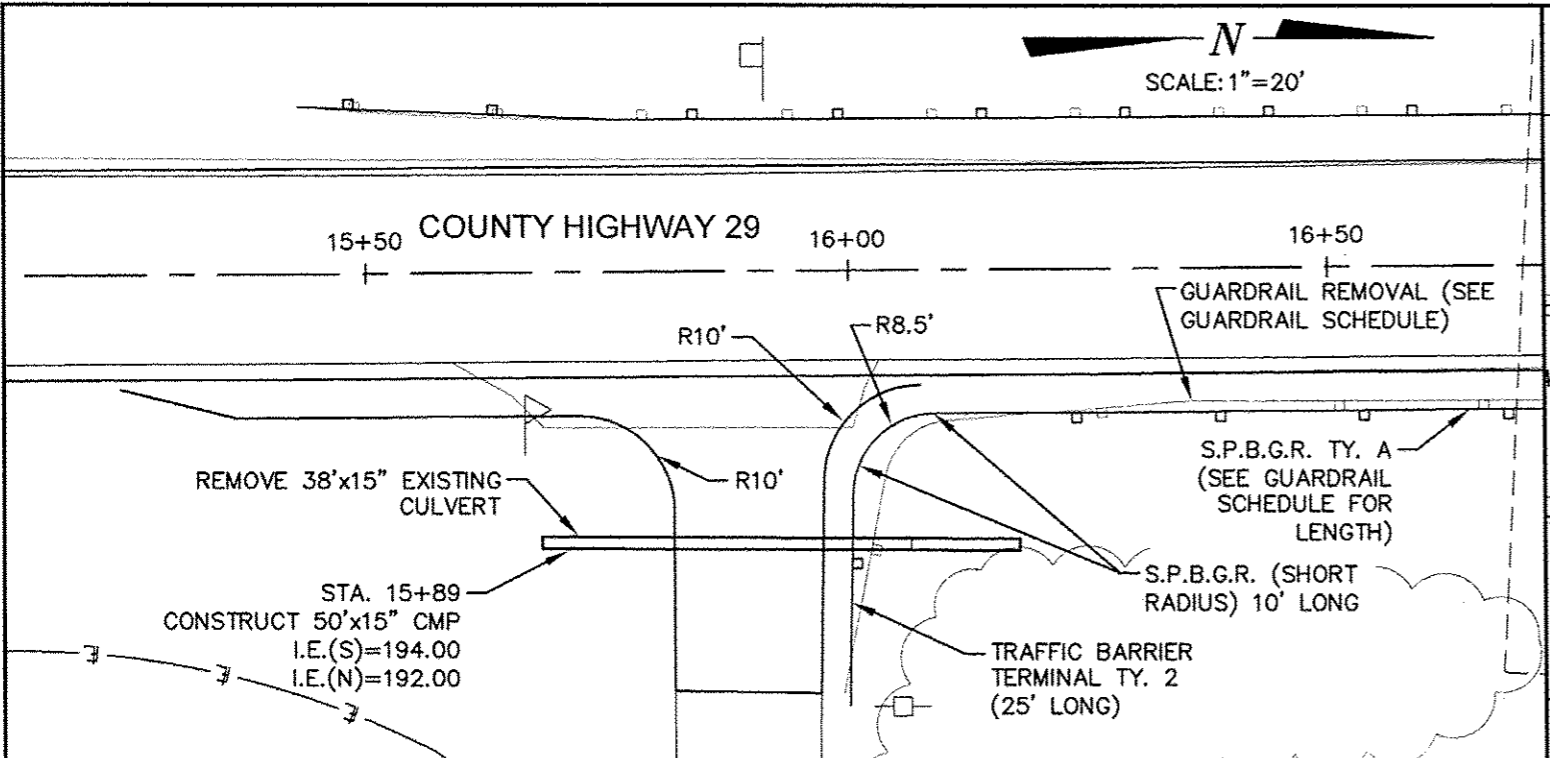
COUNTY HIGHWAY 5



INTERSECTION DETAIL

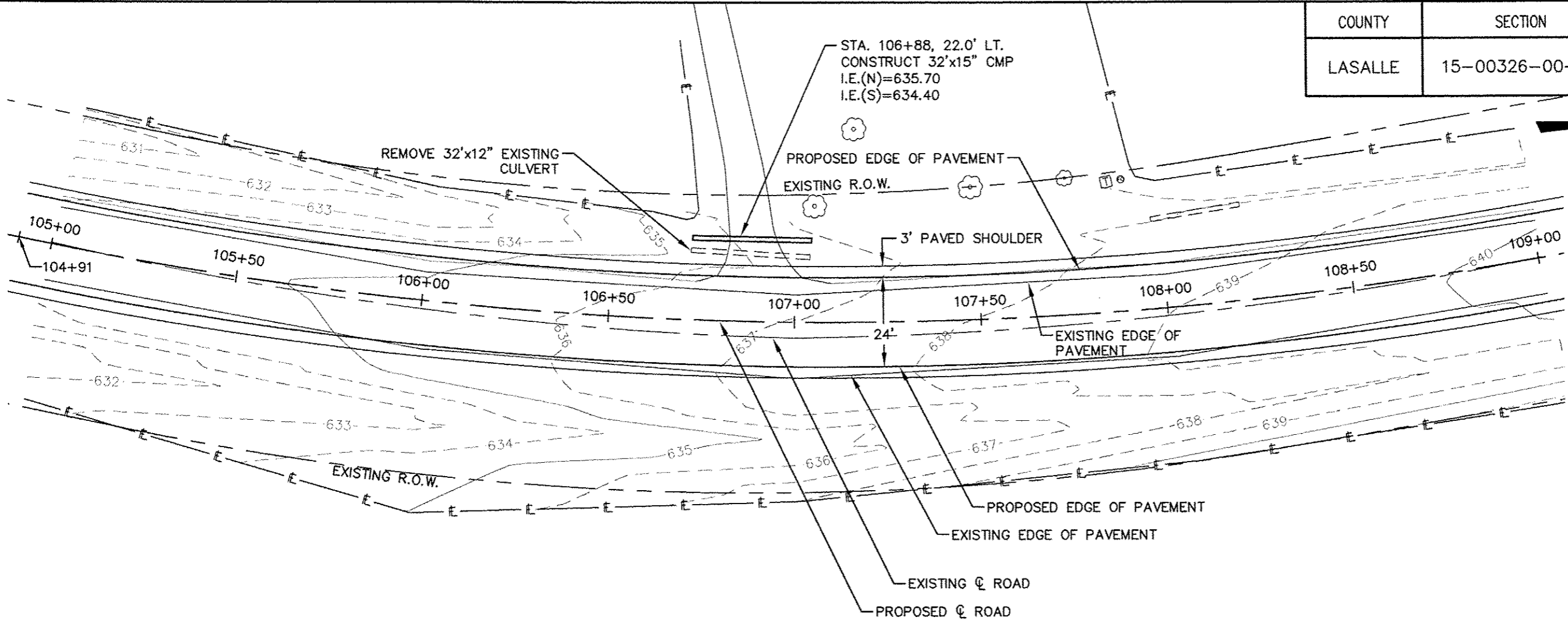
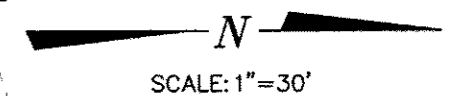
COUNTY	SECTION	HWY.NO.	SHEET NO.
LASALLE	15-00326-00-WR	29	11 of 16

Contract # 87566

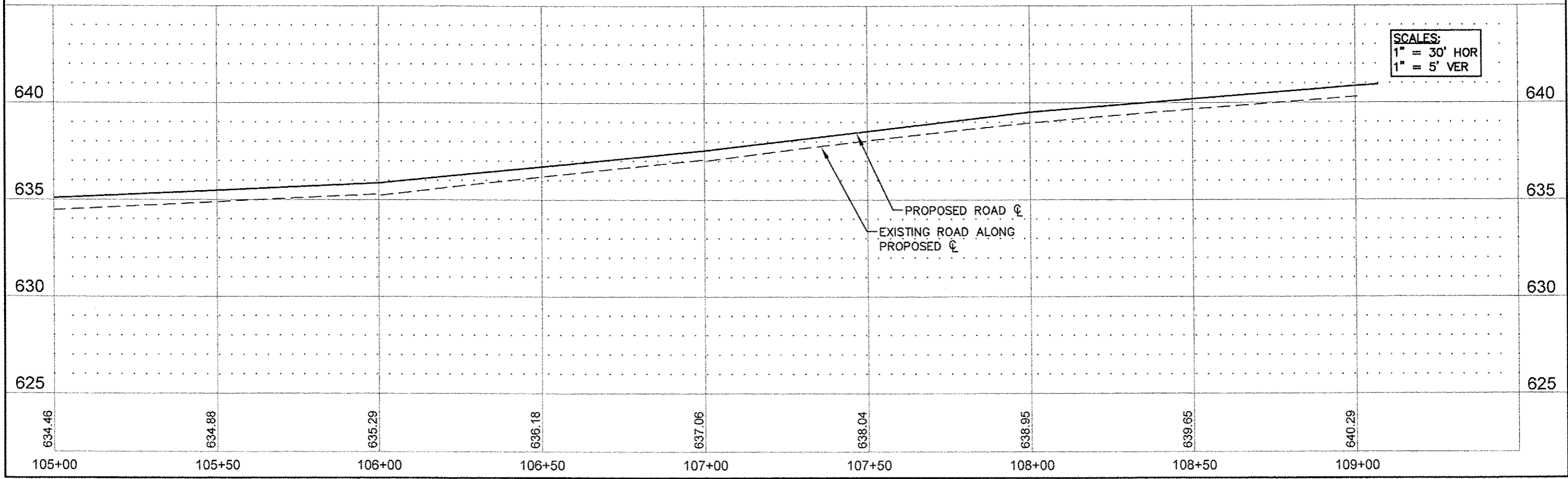


PLAN DETAILS

COUNTY	SECTION	HWY.NO.	SHEET NO.
LASALLE	15-00326-00-WR	29	12 of 16

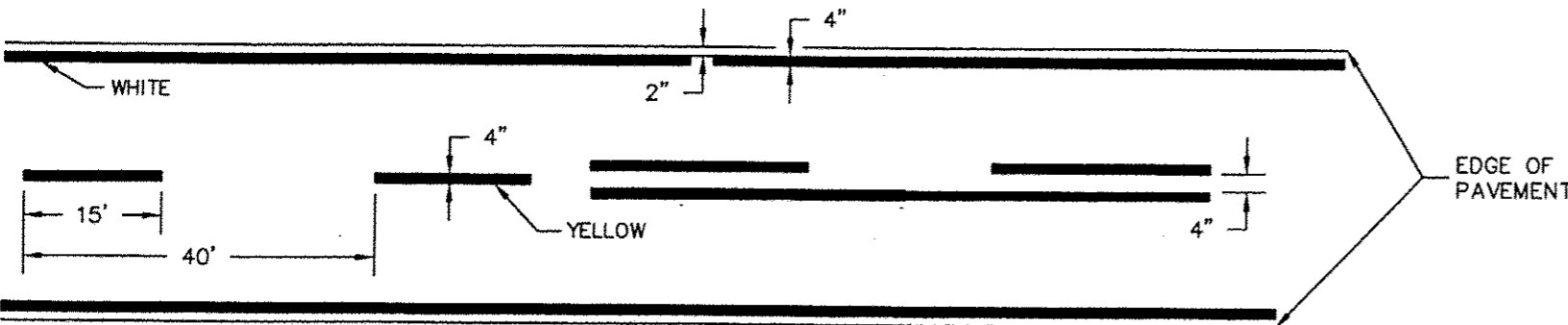


PLAN & PROFILE



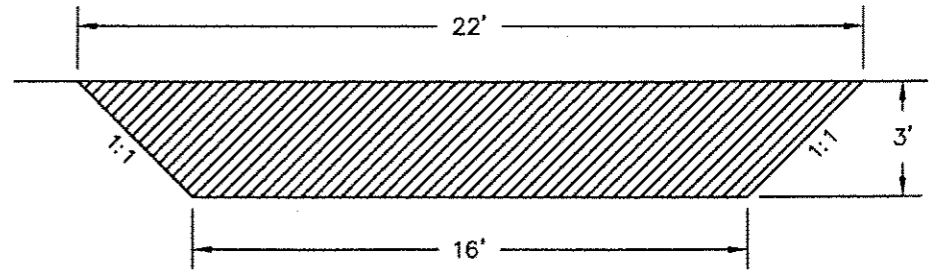
COUNTY	SECTION	HWY.NO.	SHEET NO.
LASALLE	15-00326-00-WR	29	13 of 16

Contract # 87566

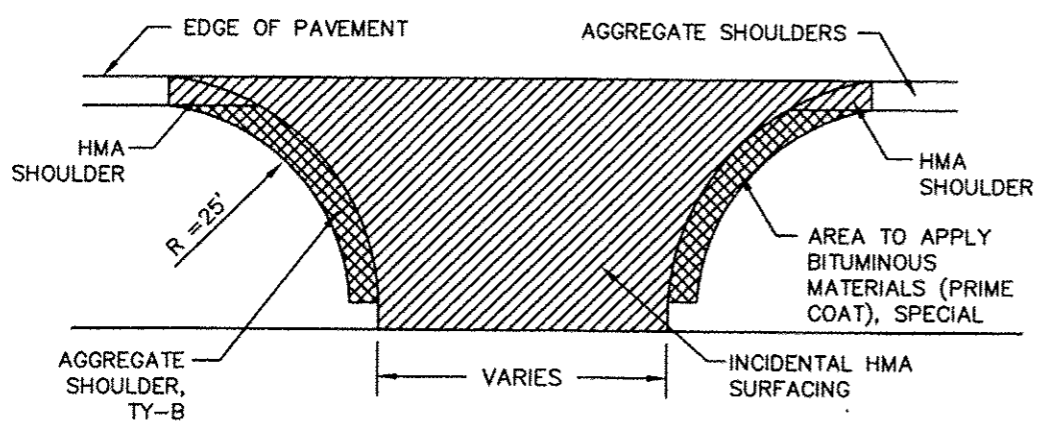


PAINTING DETAIL

LASALLE COUNTY FORCES MAINTAIN A 2-GUN SYSTEM. PAINT OPERATION SHOULD REFLECT LASALLE COUNTY'S SYSTEM.

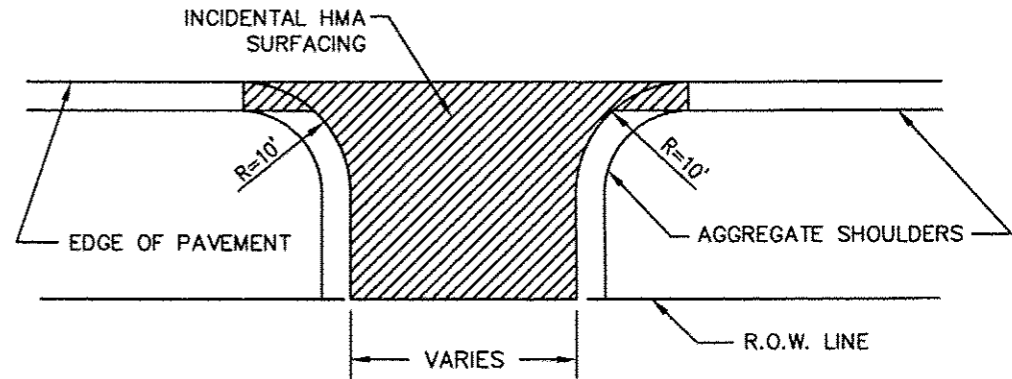


TYPICAL FIELD ENTRANCE

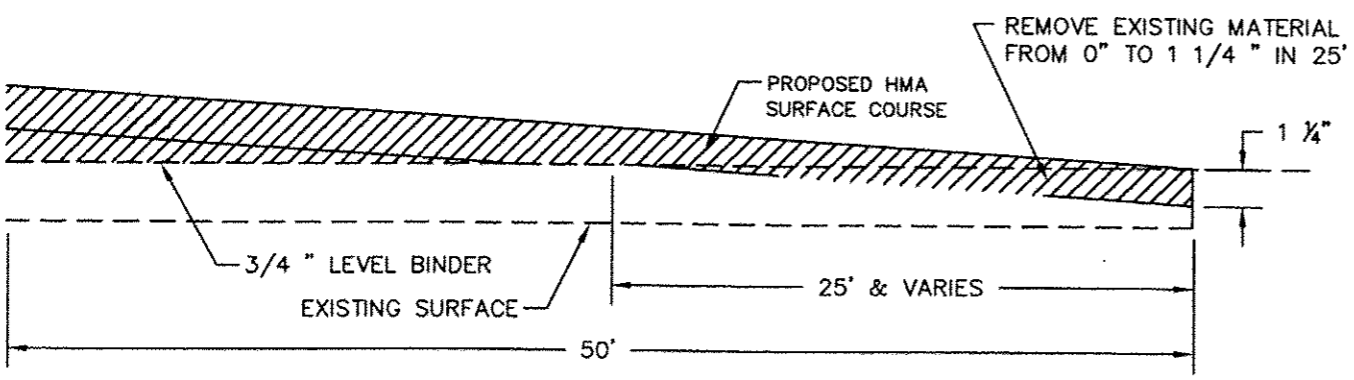


TYPICAL INTERSECTION

NOTE: AGGREGATE SHOULDERS IN THE RADIUS AREAS OF SIDE ROADS SHALL BE APPLIED WITH MC-30 AT THE RATE SPECIFIED IN THE SPECIAL PROVISIONS.

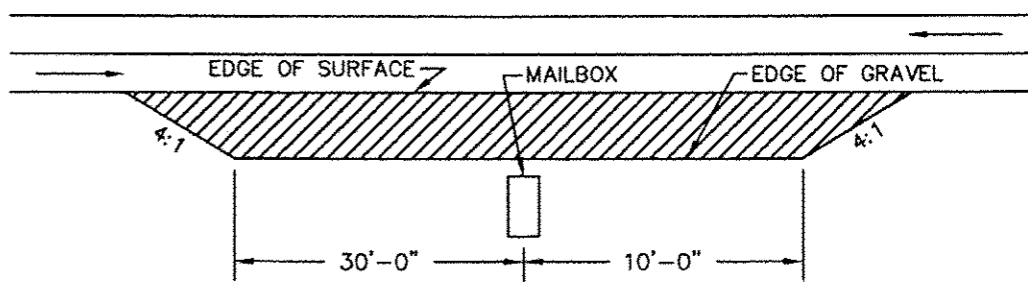


TYPICAL PRIVATE ENTRANCE



TAPER DETAIL

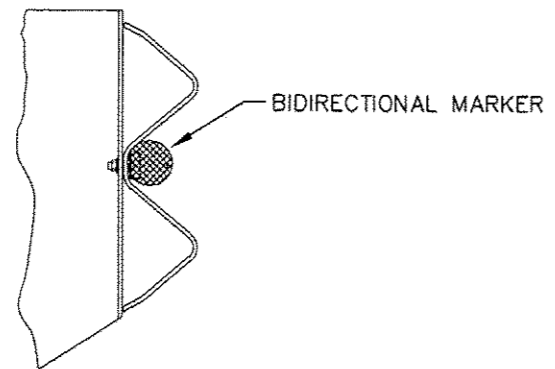
SEE HMA SURFACE REMOVAL - BUTT JOINT SCHEDULE FOR LOCATIONS



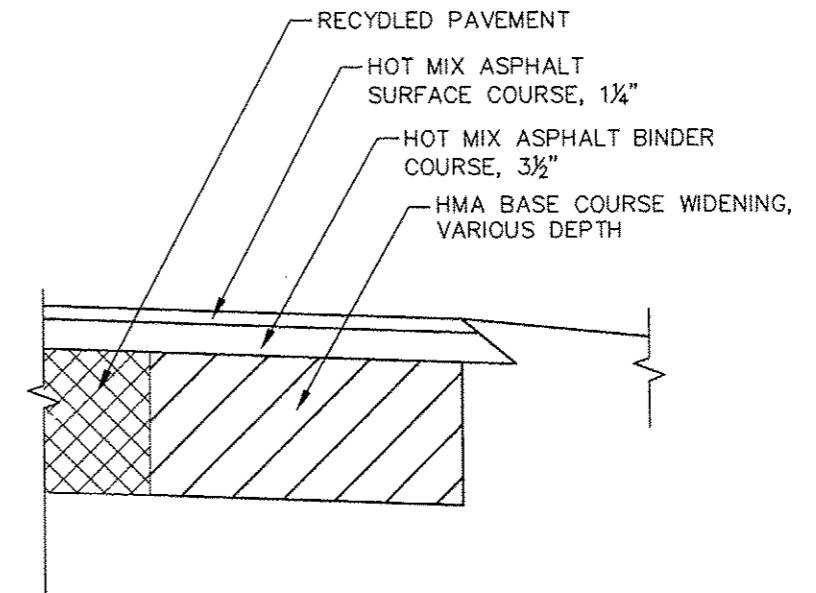
TYPICAL MAILBOX TURNOUT

COUNTY	SECTION	HWY.NO.	SHEET NO.
LASALLE	15-00326-00-WR	29	14 of 16

Contract # 87566

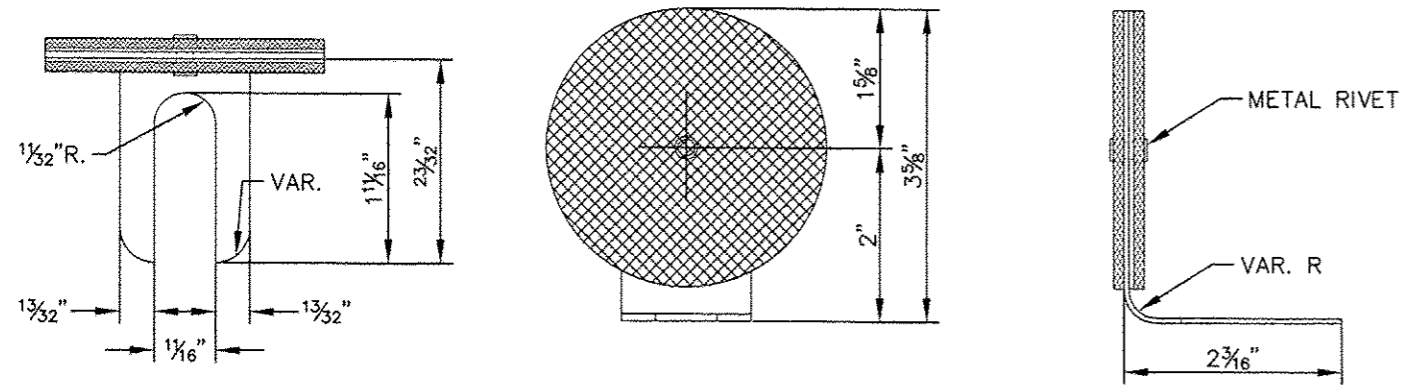


TYPICAL MOUNTING WITH REFLECTOR



WIDENING DETAIL

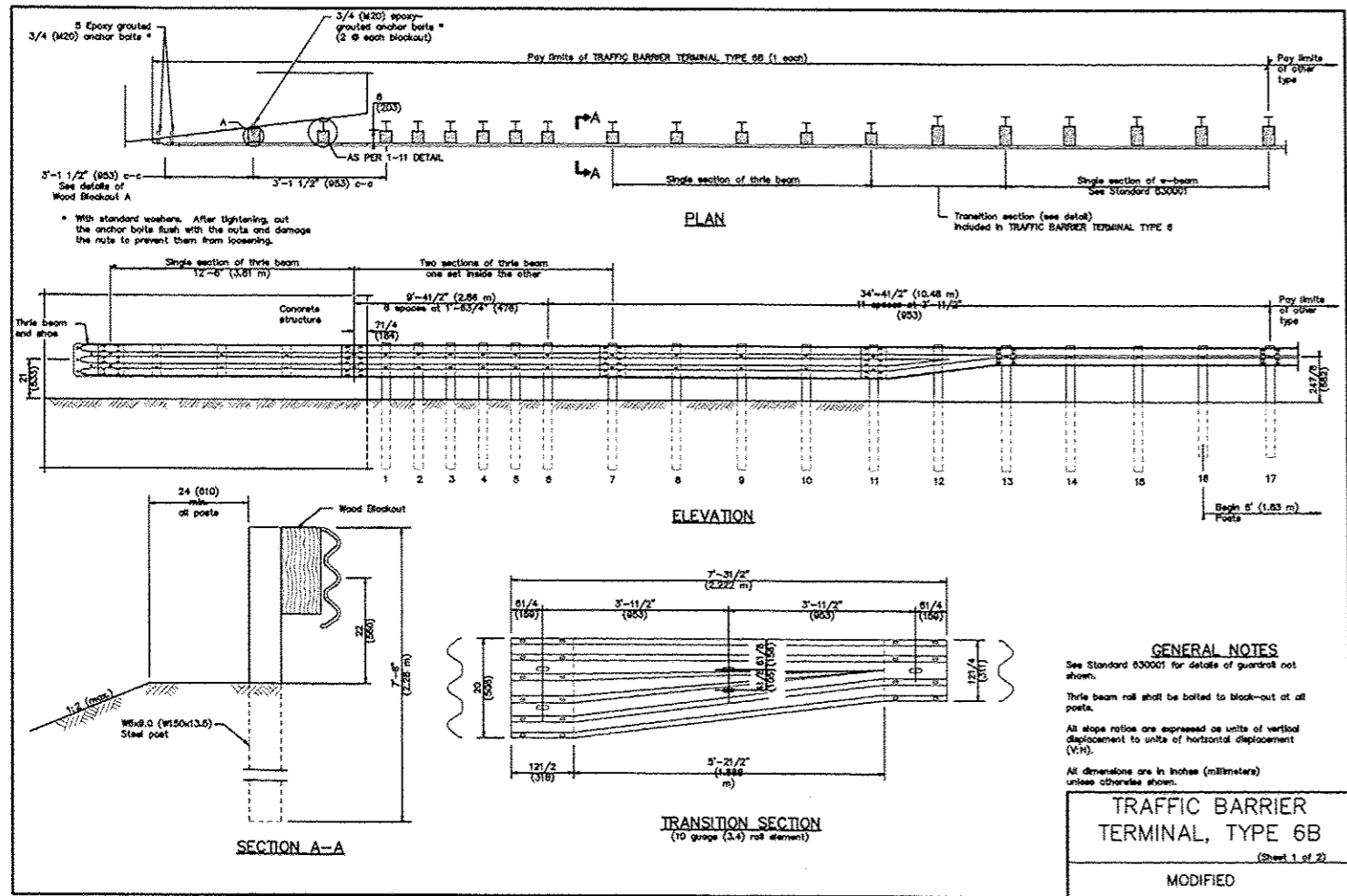
SEE SCHEDULE SHEET FOR LOCATIONS AND QUANTITIES



BIDIRECTIONAL MARKER

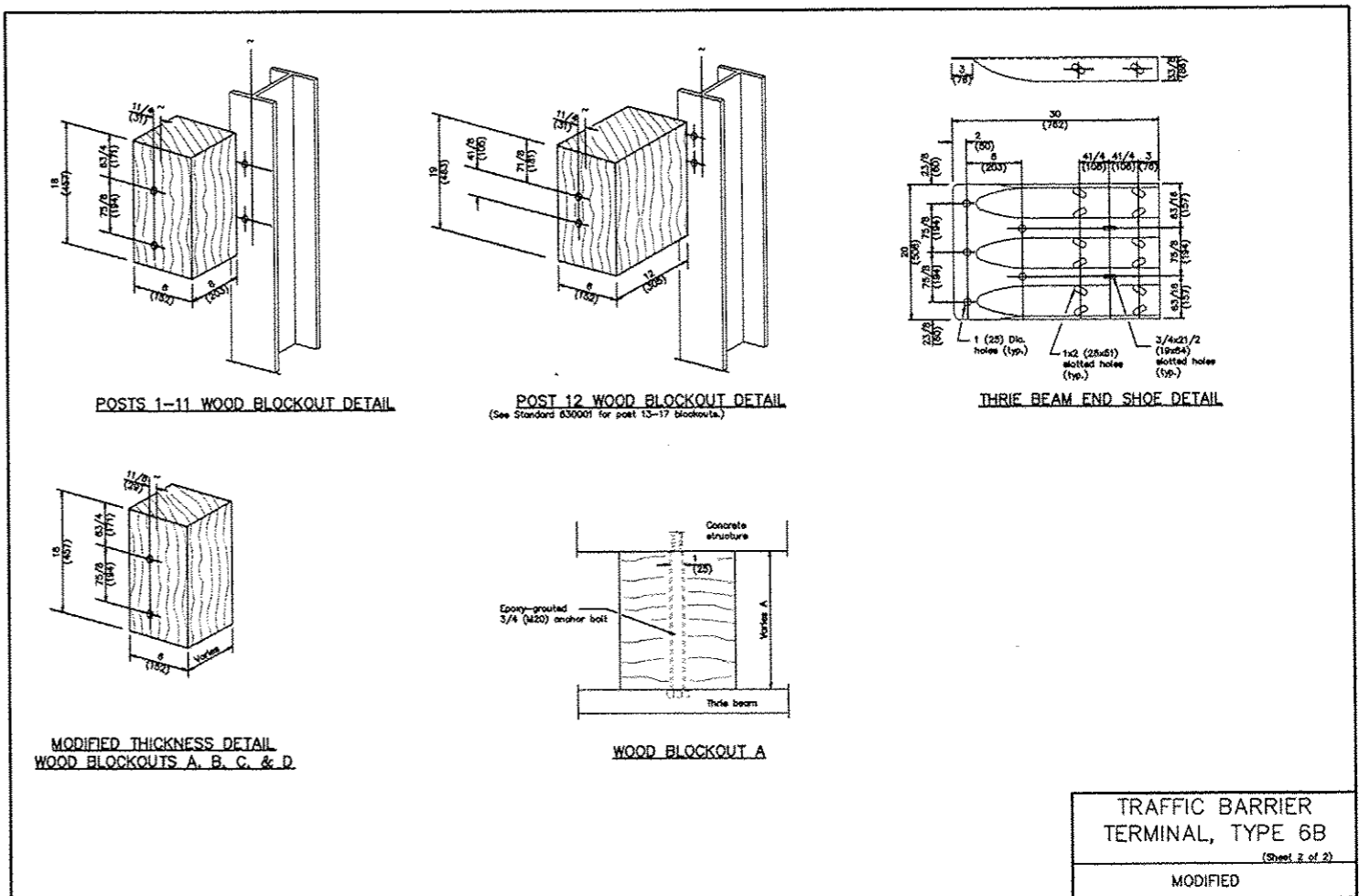
COUNTY	SECTION	HWY.NO.	SHEET NO.
LASALLE	15-00326-00-WR	29	15 of 16

Contract # 87566



GENERAL NOTES
 See Standard 630001 for details of guardrail not shown.
 Thrie beam roll shall be bolted to block-out at all posts.
 All slope ratios are expressed as units of vertical displacement to units of horizontal displacement (V:H).
 All dimensions are in inches (millimeters) unless otherwise shown.

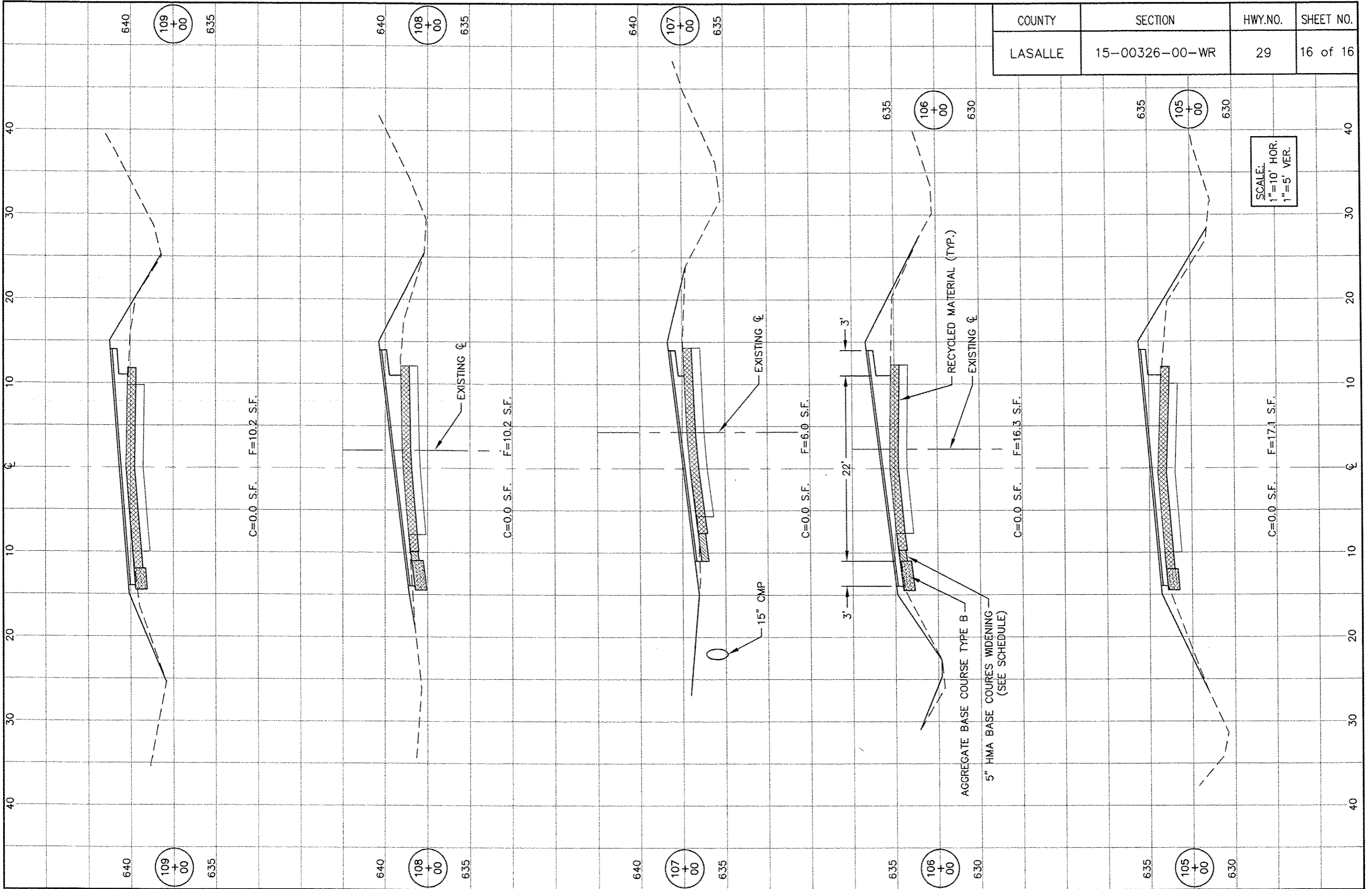
TRAFFIC BARRIER TERMINAL, TYPE 6B
 (Sheet 1 of 2)
 MODIFIED



TRAFFIC BARRIER TERMINAL, TYPE 6B
 (Sheet 2 of 2)
 MODIFIED

DETAILS

COUNTY	SECTION	HWY.NO.	SHEET NO.
LASALLE	15-00326-00-WR	29	16 of 16



C=0.0 S.F. F=10.2 S.F.

C=0.0 S.F. F=10.2 S.F.

C=0.0 S.F. F=6.0 S.F.

C=0.0 S.F. F=16.3 S.F.

C=0.0 S.F. F=17.1 S.F.

SCALE:
1"=10' HOR.
1"=5' VER.

AGGREGATE BASE COURSE TYPE B
5" HMA BASE COURSE WIDENING
(SEE SCHEDULE)

RECYCLED MATERIAL (TYP.)
EXISTING ϕ

EXISTING ϕ

15" CMP

3' 22' 3'