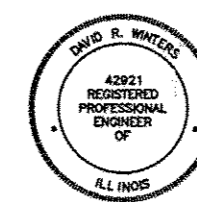
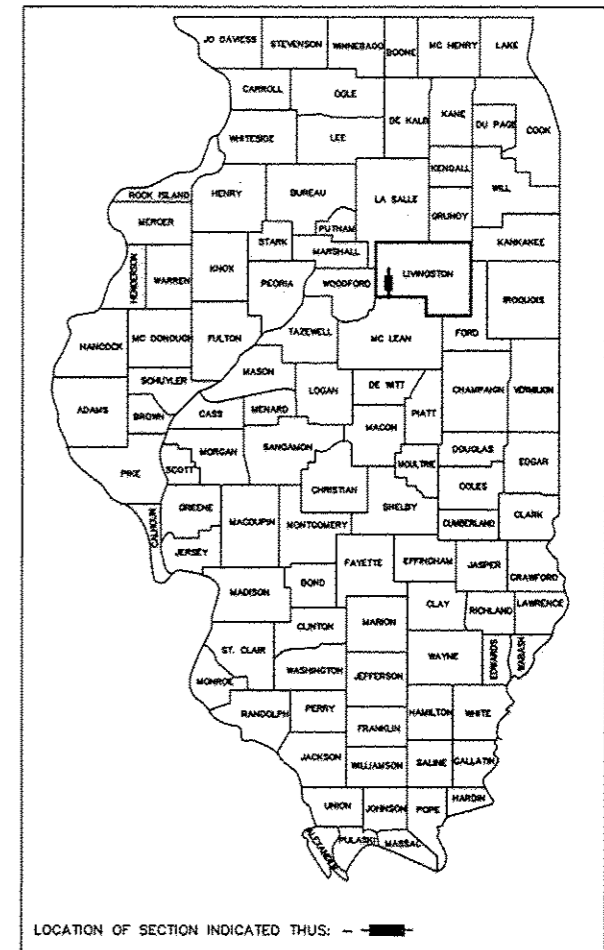


ROUTE NO.	SECTION	COUNTY	TOTAL SHEETS	SHEET NO.
355	10-00149-02-RS	LIVINGSTON	5	1

PROJECT NO. RS-0355(122)

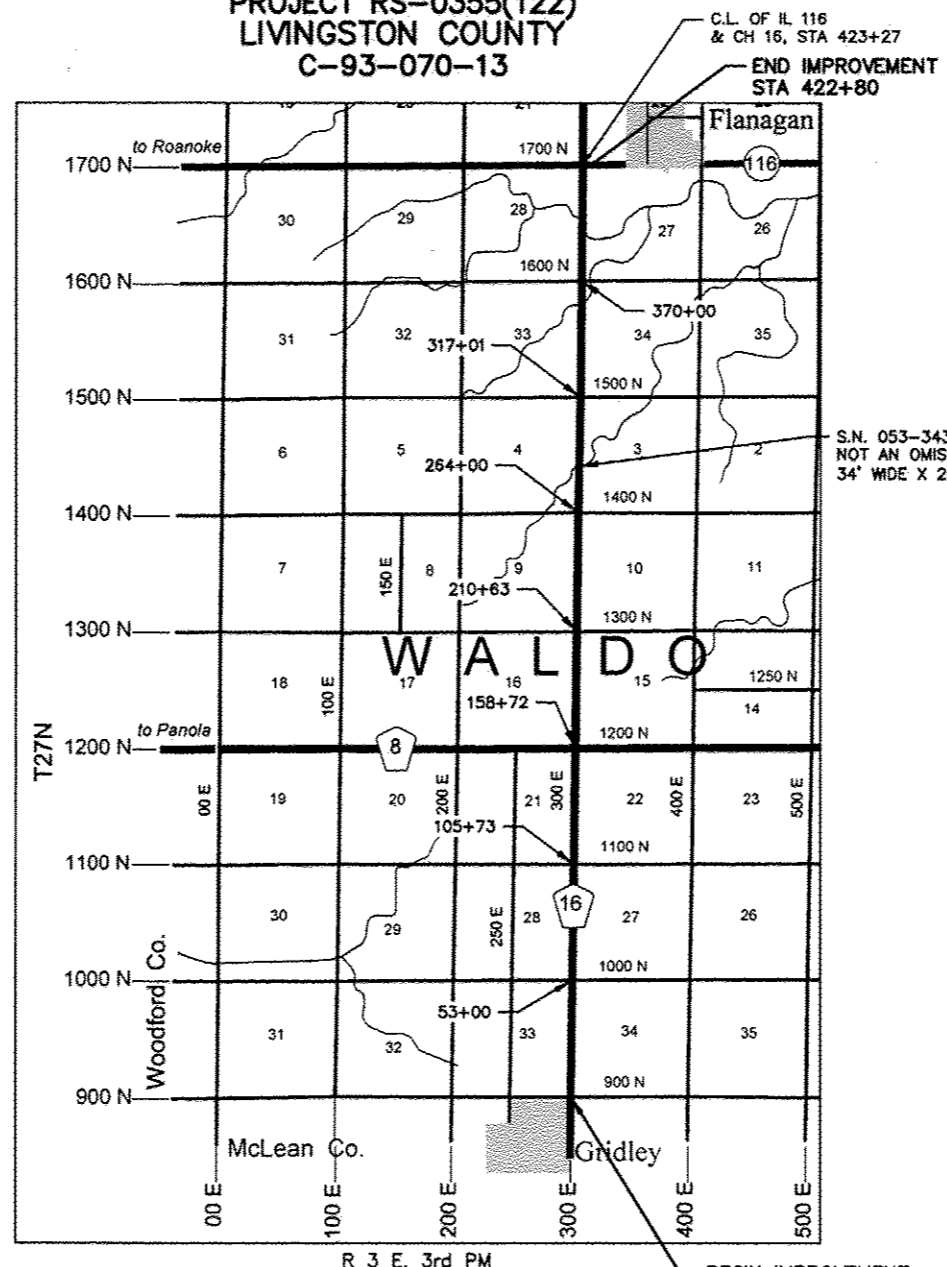


THESE PLANS WERE MADE BY ME OR BY A MEMBER OF MY STAFF WORKING UNDER MY PERSONAL SUPERVISION.
 DATE 02/05/14 COUNTY ENGINEER, P.E. NO. 42921 EXPIRATION DATE 11/30/2015

"THE ACCEPTANCE OF THIS PROJECT IS BASED ON THE MINIMUM DESIGN CRITERIA UNDER LAFO GUIDELINES."

APPROVED 02/05/2014
 [Signature] LIVINGSTON COUNTY OFFICIAL
 PASSED 2/11/2014
 [Signature] DISTRICT THREE LOCAL ROADS & STREETS ENGINEER
 RELEASING FOR BID BASED ON LIMITED REVIEW 2/11/2014
 [Signature] DEPUTY DIRECTOR OF HIGHWAYS, REGION TWO ENGINEER
 STATE OF ILLINOIS DEPARTMENT OF TRANSPORTATION

STATE OF ILLINOIS
 DEPARTMENT OF TRANSPORTATION
 DIVISION OF HIGHWAYS
 PLANS FOR PROPOSED
 FEDERAL AID HIGHWAY
 SURFACE TRANSPORTATION PROGRAM
 F.A.S. ROUTE 355, CH 16, (FLANAGAN-GRIDLEY RD)
 SECTION 10-00149-02-RS
 PROJECT RS-0355(122)
 LIVINGSTON COUNTY
 C-93-070-13



GROSS LENGTH = 42,310' = 8.014 MILES
 NET LENGTH = 42,310' = 8.014 MILES
 0 1 2 3 4
 SCALE(MILES)

INDEX OF SHEETS

- COVER SHEET, STANDARDS, & SUMMARY OF QUANTITIES
- TYPICAL CROSS-SECTIONS & ENTRANCE SCHEDULE
- TRANSITION AT BRIDGE DETAILS
- INTERSECTION, MAILBOX & RUMBLE STRIP DETAILS
- SCHEDULE OF RESURFACING QUANTITIES

HIGHWAY STANDARDS

- 701301-04 LANE CLOSURE 2L, 2W SHORT TIME OPERATIONS
- 701306-03 LANE CLOSURE 2L, 2W SLOW MOVING OPERATIONS DAY ONLY ≥45MPH
- 701311-03 LANE CLOSURE 2L, 2W MOVING OPERATIONS DAY ONLY
- 701901-03 TRAFFIC CONTROL DEVICES
- 780001-04 TYPICAL PAVEMENT MARKINGS

SUMMARY OF QUANTITIES CONST. CODE 0005			
ITEM NO.	ITEM	UNIT	QUANTITIES
40600625	LEVELING BINDER (MACHINE METHOD), N50	TON	5,840.0
40603310	HOT-MIX ASPHALT SURFACE COURSE, MIX "C", N50	TON	8,845.0
40800010	BITUMINOUS MATERIALS (PRIME COAT)	GALLON	246.0
40800050	INCIDENTAL HOT-MIX ASPHALT SURFACING	TON	499.0
44300100	AREA REFLECTIVE CRACK CONTROL TREATMENT	SQ YD	102,324.0
48102100	AGGREGATE WEDGE SHOULDER, TYPE B	TON	6,383.0
67100100	MOBILIZATION	L SUM	1.0
70300100	SHORT TERM PAVEMENT MARKING	FOOT	8,464.0
70301000	WORK ZONE PAVEMENT MARKING REMOVAL	SQ FT	1,411.0
78001110	PAINT PAVEMENT MARKING - LINE 4"	FOOT	12,275.0
* X4060110	BITUMINOUS MATERIALS (PRIME COAT)	POUND	23,415.0
* X4401198	HOT-MIX ASPHALT SURFACE REMOVAL, VARIABLE DEPTH	SQ YD	1,197.0
* X7010216	TRAFFIC CONTROL AND PROTECTION, (SPECIAL)	L SUM	1.0
* Z0055300	RUMBLE STRIP	EACH	4.0

- * SEE SPECIAL PROVISIONS
- △ SPECIALTY ITEMS

THIS PROJECT CONSISTS OF HMA LEVELING BINDER, HMA SURFACE COURSE, MIX "C", N50, AND AGGREGATE SHOULDERS BEGINNING AT A POINT NEAR THE INTERSECTION OF CH 16 AND LIVINGSTON / MCLEAN COUNTY LINE (900N) AND EXTENDING IN A NORTHERLY DIRECTION TO THE INTERSECTION OF IL RT 116 (1700N), WEST OF FLANAGAN, ILLINOIS.

UTILITIES

CONTACT J.U.L.I.E. 811 or 800-892-0123 BEFORE DIGGING

TRAFFIC DATA

C.H. 16 - COLLECTOR
 POSTED SPEED = 55 MPH-RURAL
 DESIGN SPEED = 50 MPH-RURAL
 DESIGN ADT= 1125/ YR 2029, 15 YEAR D.P.
 CLASS III ROADS, 80,000# DESIGN

Z:\COW\ROAD Projects\00149RS2-Flanagan-Gridley\Planning\Plans-Grid Rd.dwg, 1/31/2014 10:44:31 AM