

KLARA M. VALLAS
18-06-179-004

EXIST. R.O.W.

STRUCTURE #14
STA. 30+17.91, 33.0' LT
INLET, TYPE G-1
RIM ELEV = 539.94
INV ELEV = 536.49, 12" E (IN)
INV ELEV = 536.44, 12" SW (OUT)

(E) 23.2'-12" CMP @ 20.09%
AND HEADWALL TO REMAIN
STONE RIPRAP, CL A3, 10.7 SY

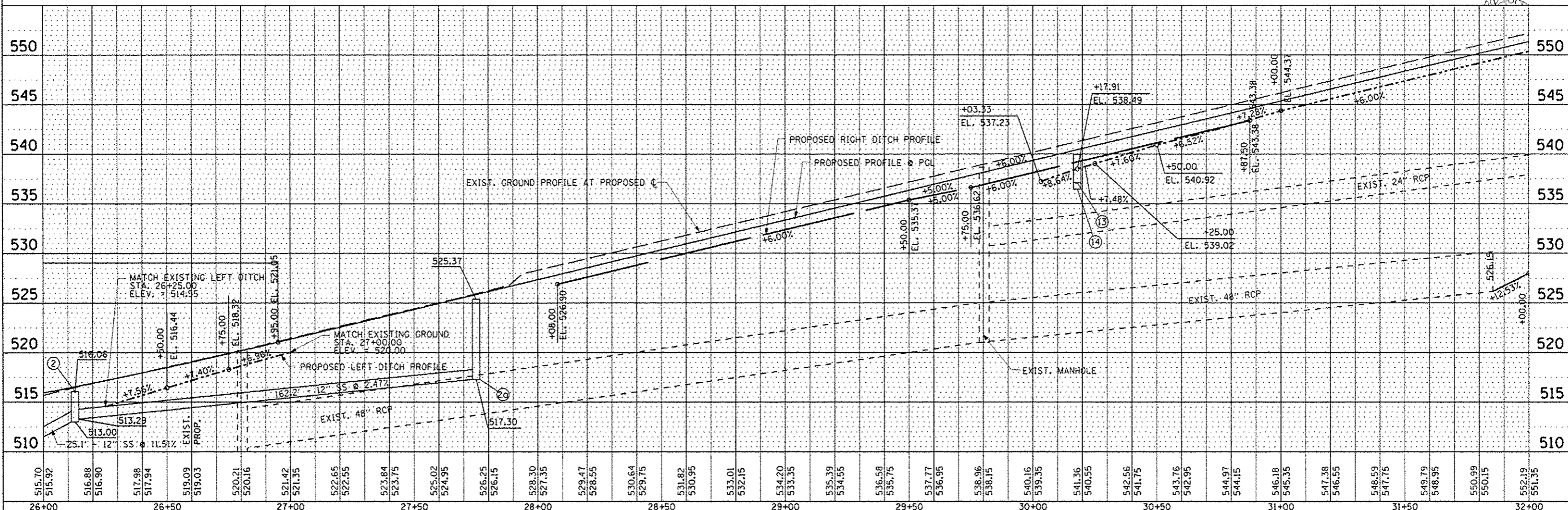
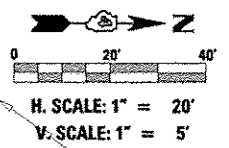
STRUCTURE #18
STA. 27+00.00, 33.0' LT
INLET, TYPE G-1
RIM ELEV = 520.87
INV ELEV = 518.37, 12" SW (OUT)

MATCHLINE STA. 26+00.00

MATCHLINE STA. 32+00.00

STERLING AVE

DATE	
BY	
CHECKED	
DESIGNED	
IN CHARGE	
PROJECT	
NO.	



DATE	
BY	
CHECKED	
DESIGNED	
IN CHARGE	
PROJECT	
NO.	

FILE NAME	USER NAME	DESIGNED	REVISED	STATE OF ILLINOIS DEPARTMENT OF TRANSPORTATION		STERLING AVENUE DRAINAGE PLAN & PROFILE		F.A.U. RTE.	SECTION	COUNTY	TOTAL SHEETS	SHEET NO.
FILE#	USER#	DRAWN	REVISED	SCALE: 1"=20'		SHEET NO. OF SHEETS STA. 26+00.00 TO STA. 32+00.00		6586	05-00010-00-PV	PEORIA	86	25
		CHECKED	REVISED					STERLING AVENUE		CONTRACT NO. 89385		
		DATE	REVISED					FED ROAD DIST NO. 4 ILLINOIS FED. AID PROJECT M-5314 (001)				